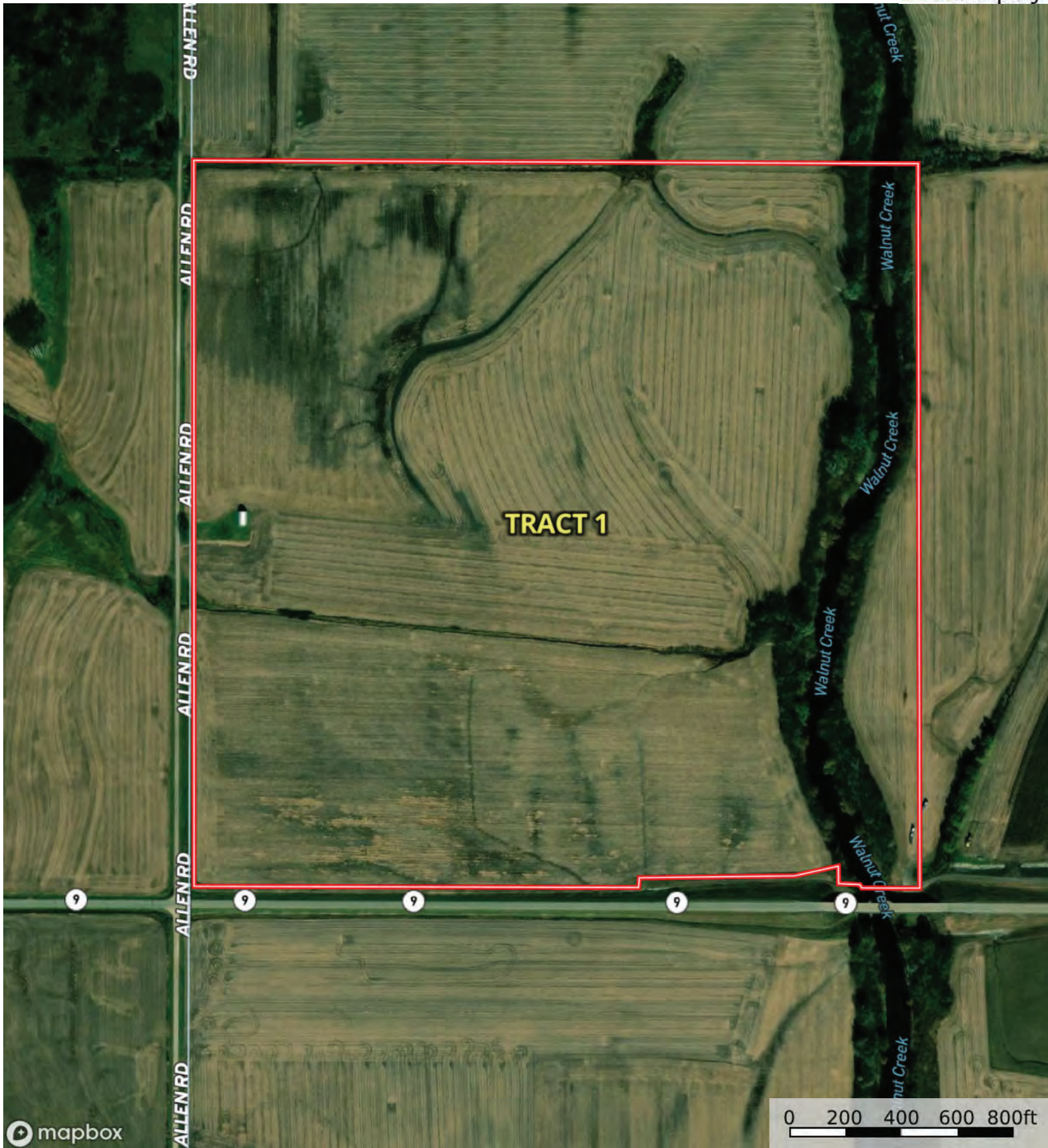


Boundary



mapbox

Boundary



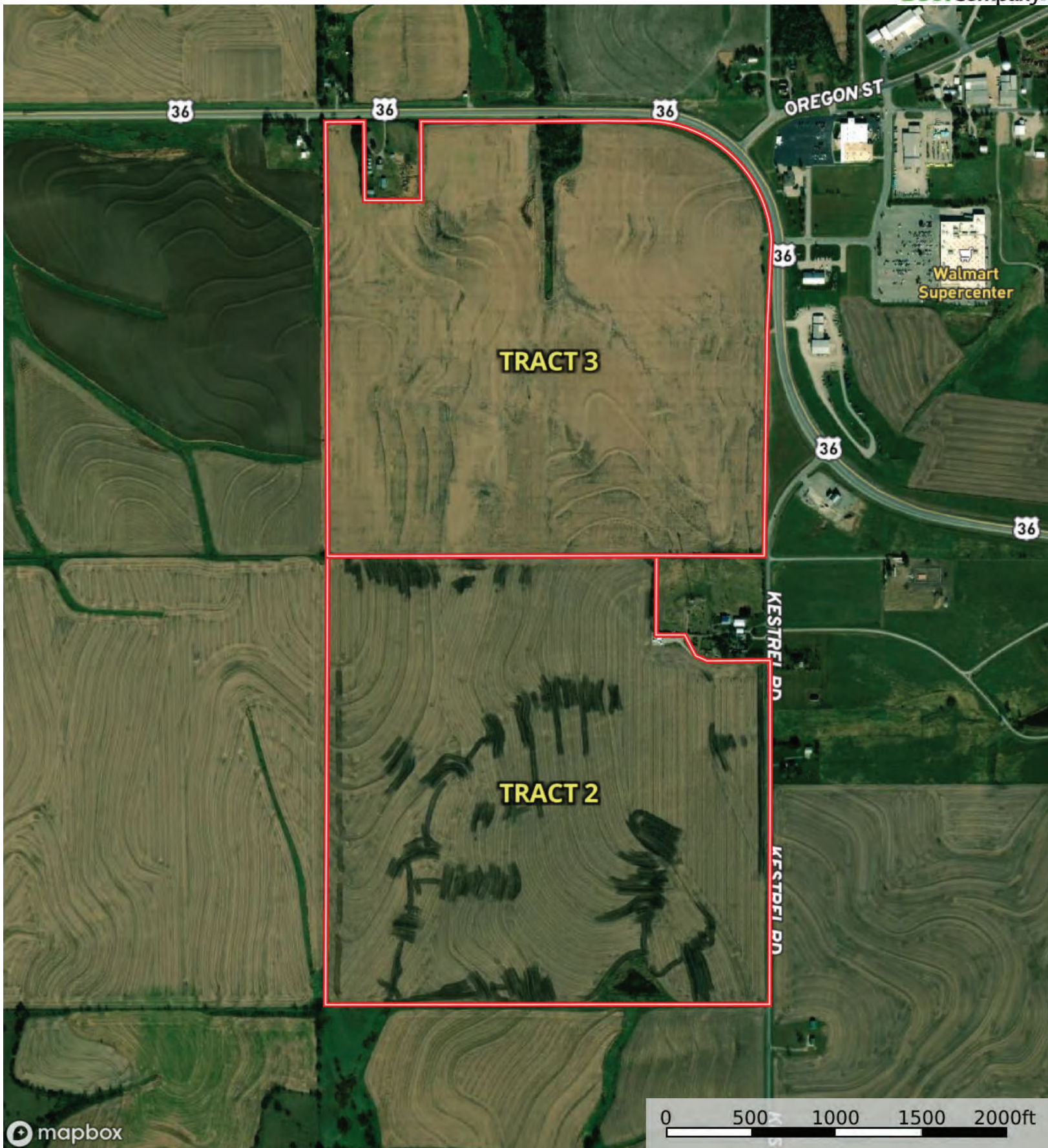


| Boundary 154.35 ac

SOIL CODE	SOIL DESCRIPTION	ACRES	%	CPI	NCCPI	CAP
7050	Kennebec silt loam, occasionally flooded	79.54	51.53	0	94	2w
7090	Wabash silty clay loam, occasionally flooded	53.38	34.58	0	50	3w
4350	Chase silty clay loam, rarely flooded	16.76	10.86	0	71	2w
7302	Martin silty clay loam, 3 to 7 percent slopes	4.67	3.03	0	59	3e
TOTALS		154.35(*)	100%	-	75.23	2.38

(*) Total acres may differ in the second decimal compared to the sum of each acreage soil. This is due to a round error because we only show the acres of each soil with two decimal.

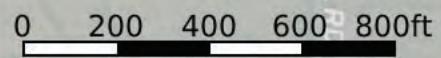
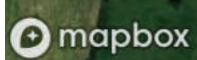
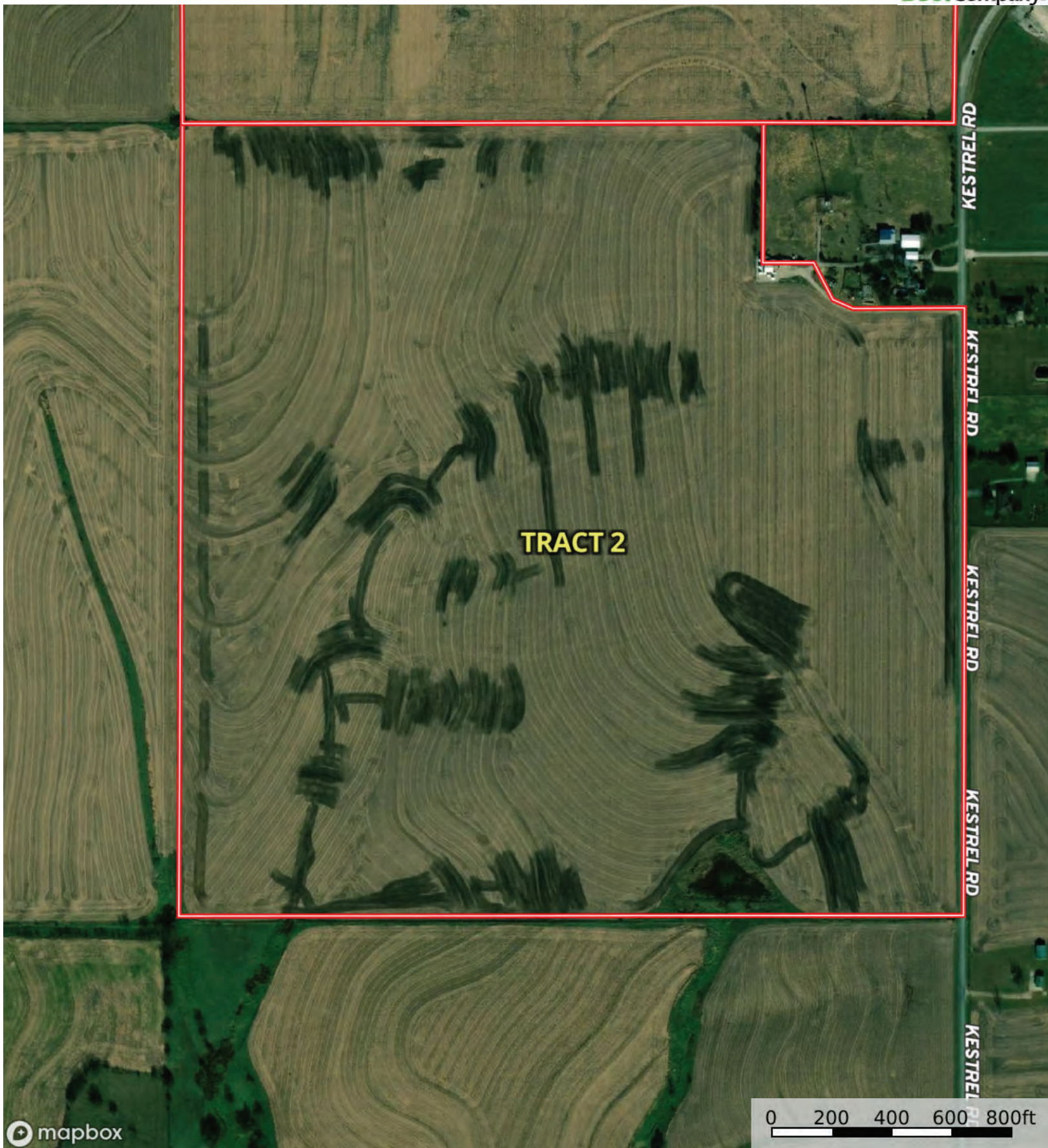




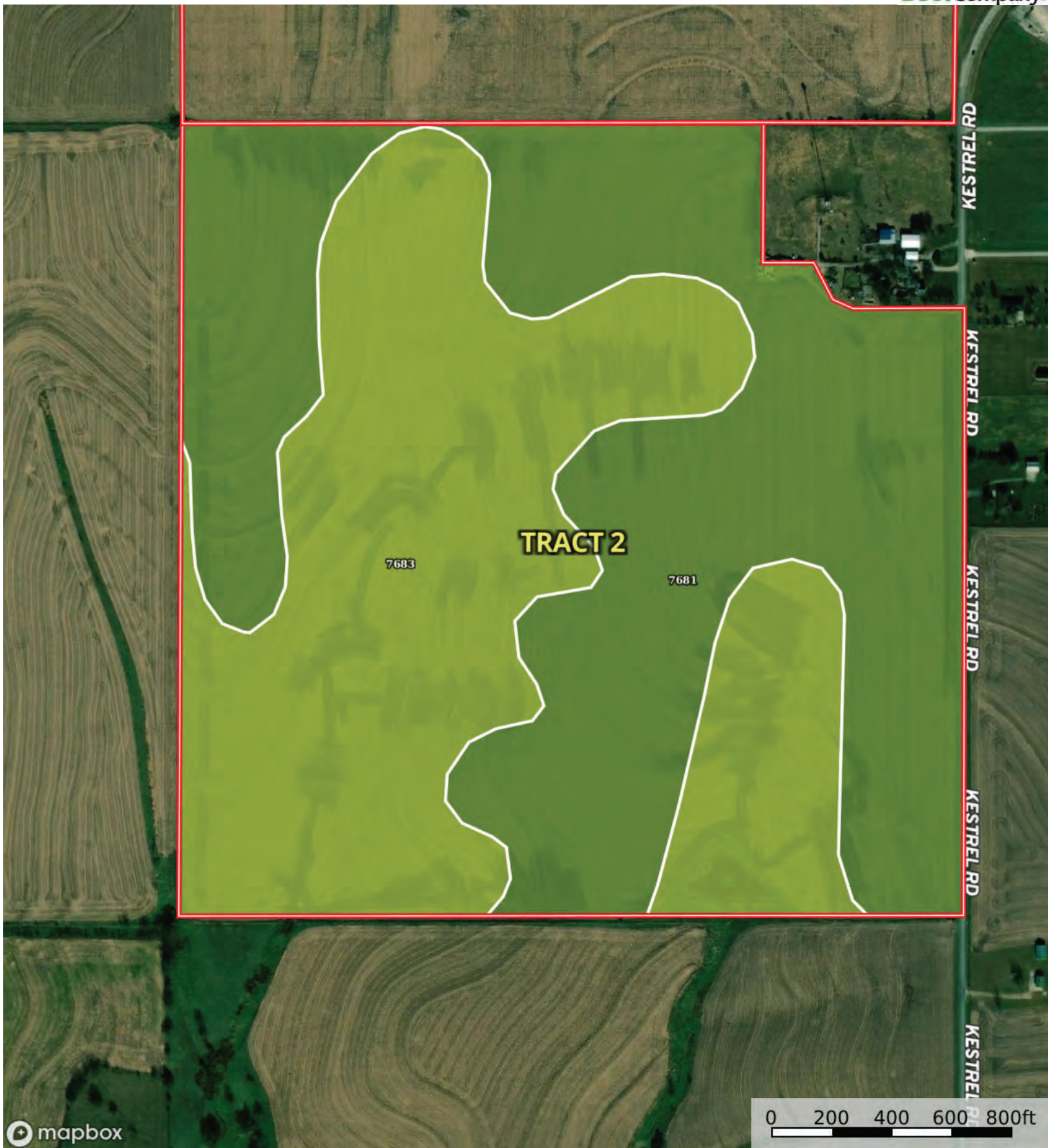
Boundary

L-2500126

Atchison County, Brown County, Kansas, 590.85 AC+/-



Boundary

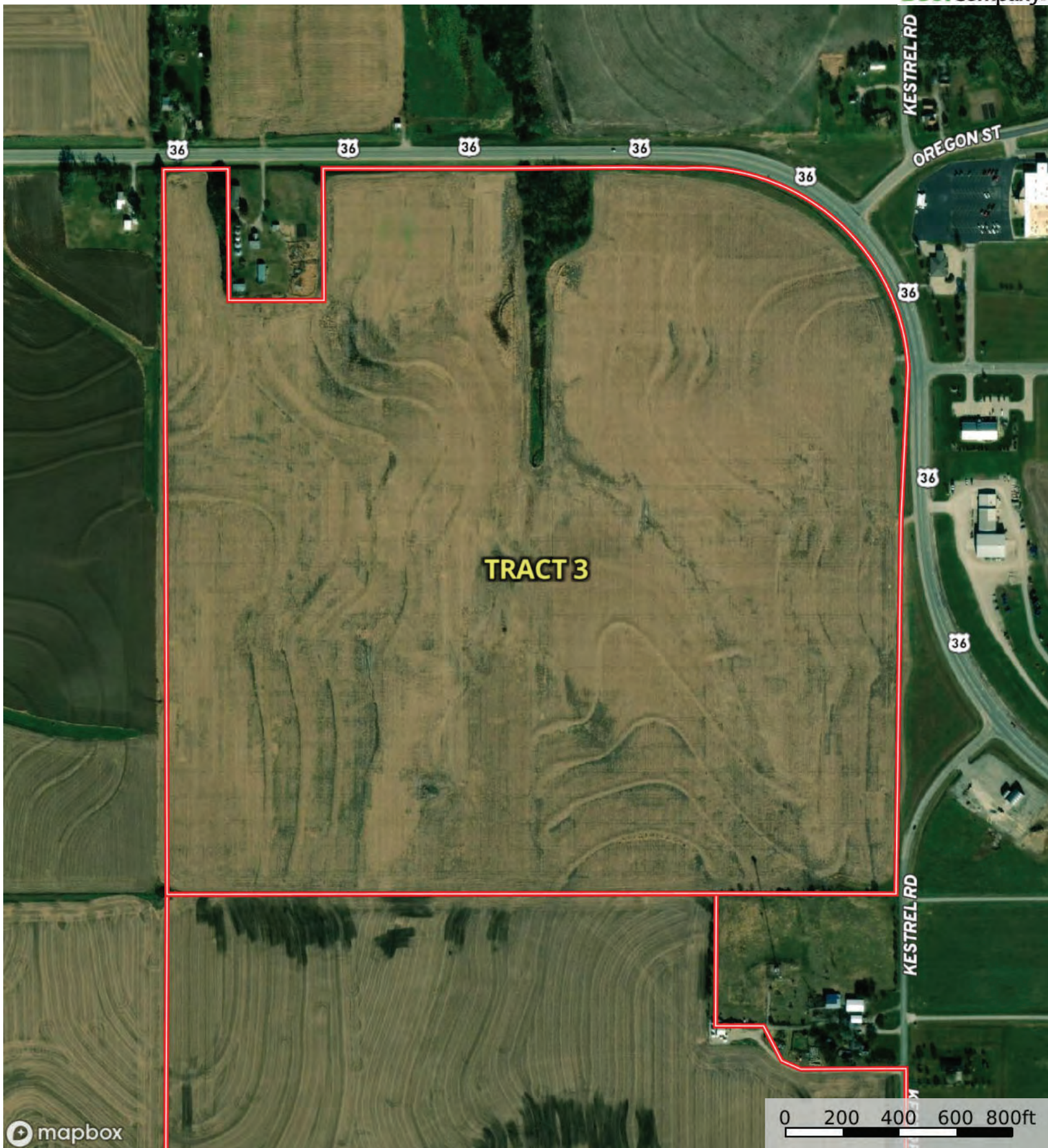


| Boundary 149.91 ac

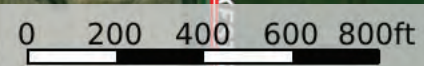
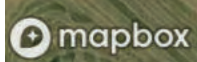
SOIL CODE	SOIL DESCRIPTION	ACRES	%	CPI	NCCPI	CAP
7681	Wymore silty clay loam, 1 to 3 percent slopes	77.76	51.87	0	64	2e
7683	Wymore silty clay loam, 3 to 6 percent slopes	72.15	48.13	0	66	3e
TOTALS		149.91(*)	100%	-	64.96	2.48

(*) Total acres may differ in the second decimal compared to the sum of each acreage soil. This is due to a round error because we only show the acres of each soil with two decimal.





Boundary



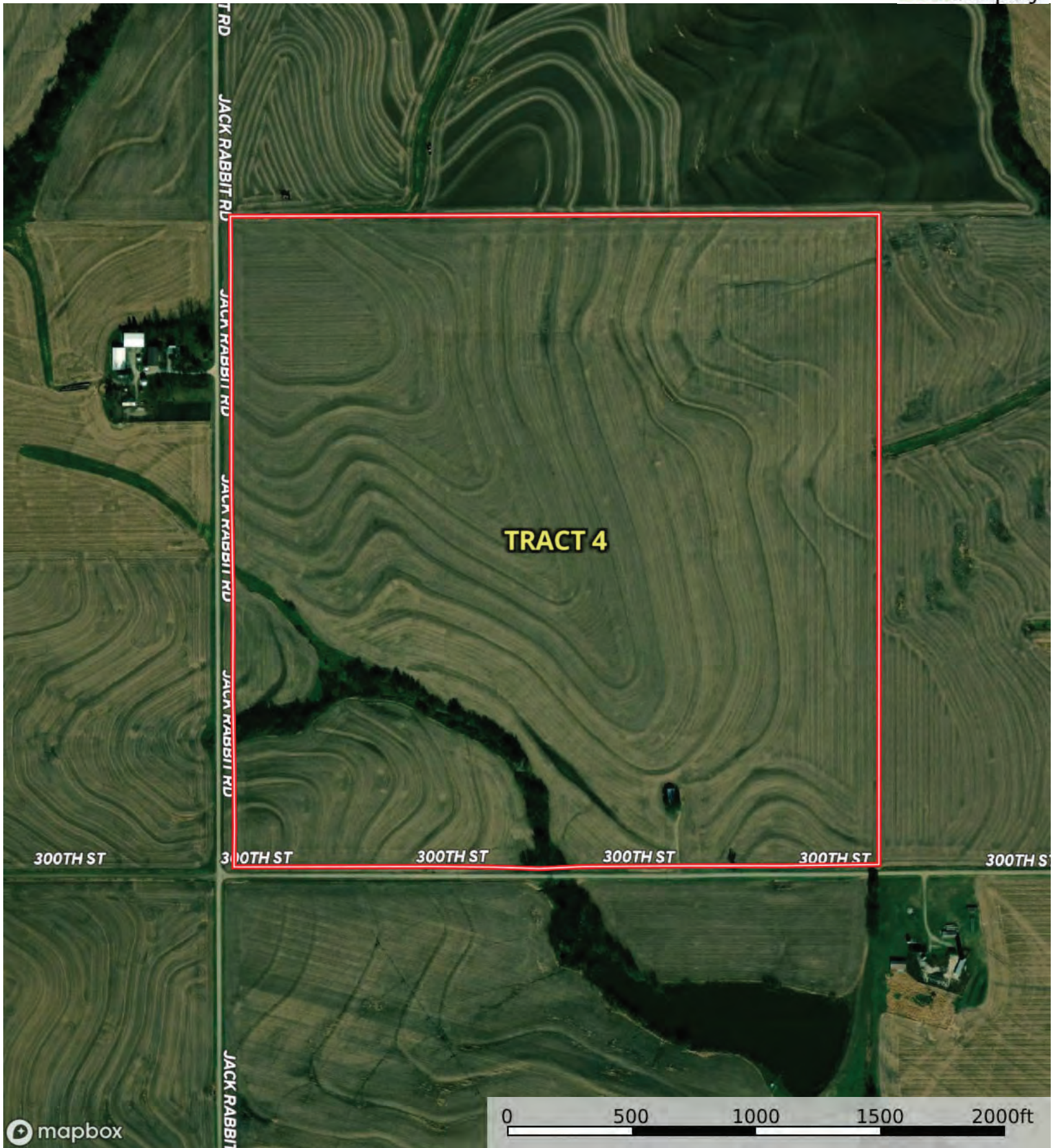
Boundary

| Boundary 146.65 ac

SOIL CODE	SOIL DESCRIPTION	ACRES	%	CPI	NCCPI	CAP
7683	Wymore silty clay loam, 3 to 6 percent slopes	72.76	49.61	0	66	3e
7681	Wymore silty clay loam, 1 to 3 percent slopes	47.85	32.63	0	64	2e
7501	Pawnee clay loam, 4 to 8 percent slopes, eroded	26.04	17.76	0	44	3e
TOTALS		146.65(*)	100%	-	61.44	2.67

(*) Total acres may differ in the second decimal compared to the sum of each acreage soil. This is due to a round error because we only show the acres of each soil with two decimal.



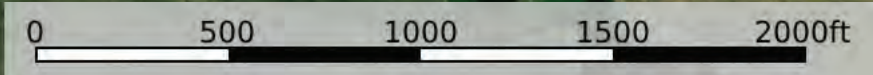


JACK RABBIT RD
JACK RABBIT RD
JACK RABBIT RD
JACK RABBIT RD
JACK RABBIT RD

TRACT 4

300TH ST 300TH ST 300TH ST 300TH ST 300TH ST

mapbox



Boundary

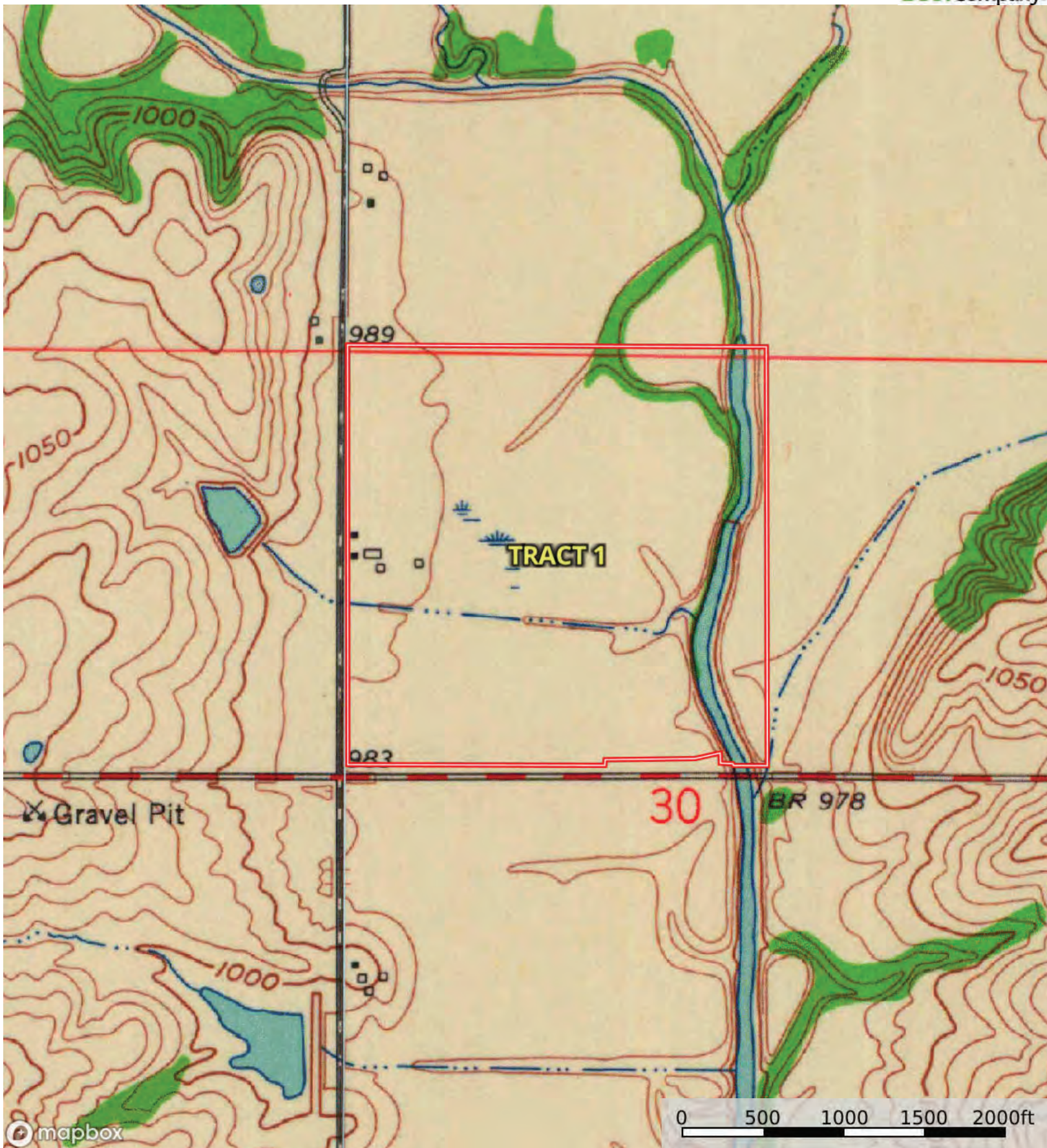


| Boundary 156.75 ac

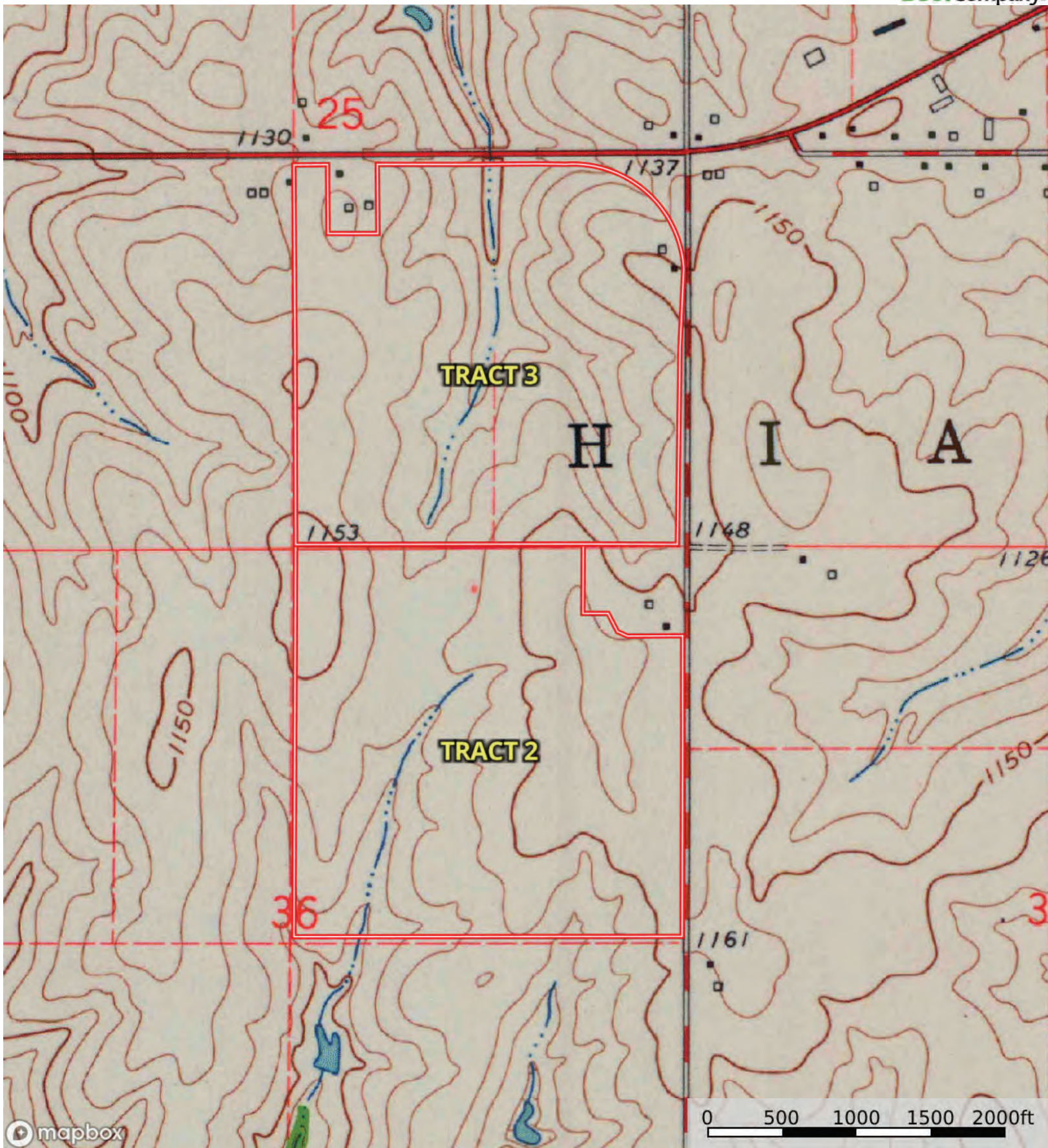
SOIL CODE	SOIL DESCRIPTION	ACRES	%	CPI	NCCPI	CAP
7207	Aksarben silty clay loam, 6 to 11 percent slopes	48.02	30.63	0	65	3e
7206	Aksarben silty clay loam, 2 to 6 percent slopes	46.43	29.62	0	66	2e
7585	Shelby clay loam, 7 to 12 percent slopes	26.7	17.03	0	65	4e
7683	Wymore silty clay loam, 3 to 6 percent slopes	19.86	12.67	0	66	3e
7681	Wymore silty clay loam, 1 to 3 percent slopes	8.7	5.55	0	64	2e
7415	Mayberry clay loam, 3 to 7 percent slopes	6.68	4.26	0	54	3e
7501	Pawnee clay loam, 4 to 8 percent slopes, eroded	0.36	0.23	0	44	3e
TOTALS		156.75(*)	100%	-	64.85	2.82

(*) Total acres may differ in the second decimal compared to the sum of each acreage soil. This is due to a round error because we only show the acres of each soil with two decimal.





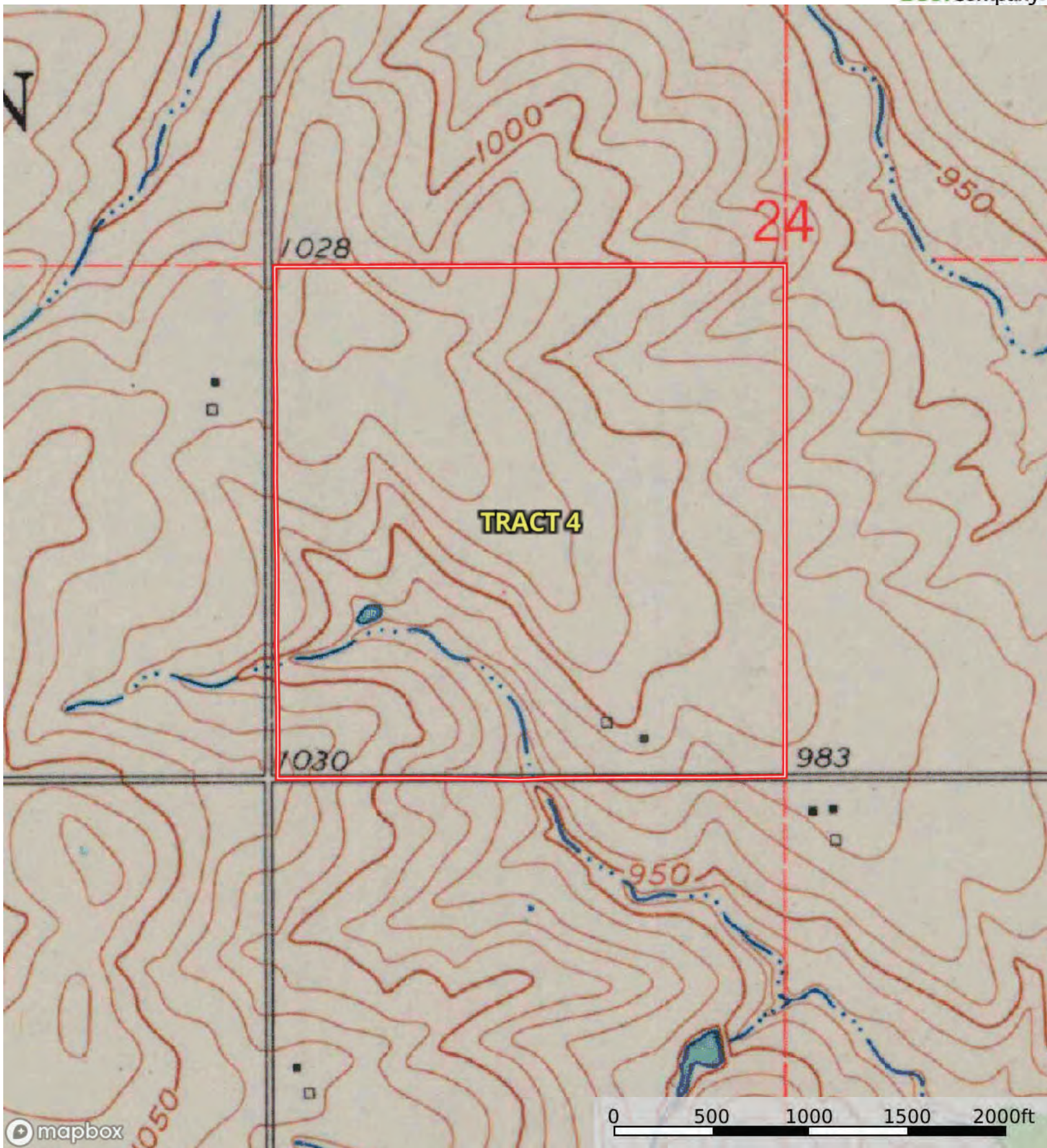
Boundary



Boundary

L-2500126

Atchison County, Brown County, Kansas, 590.85 AC+/-



mapbox

Boundary