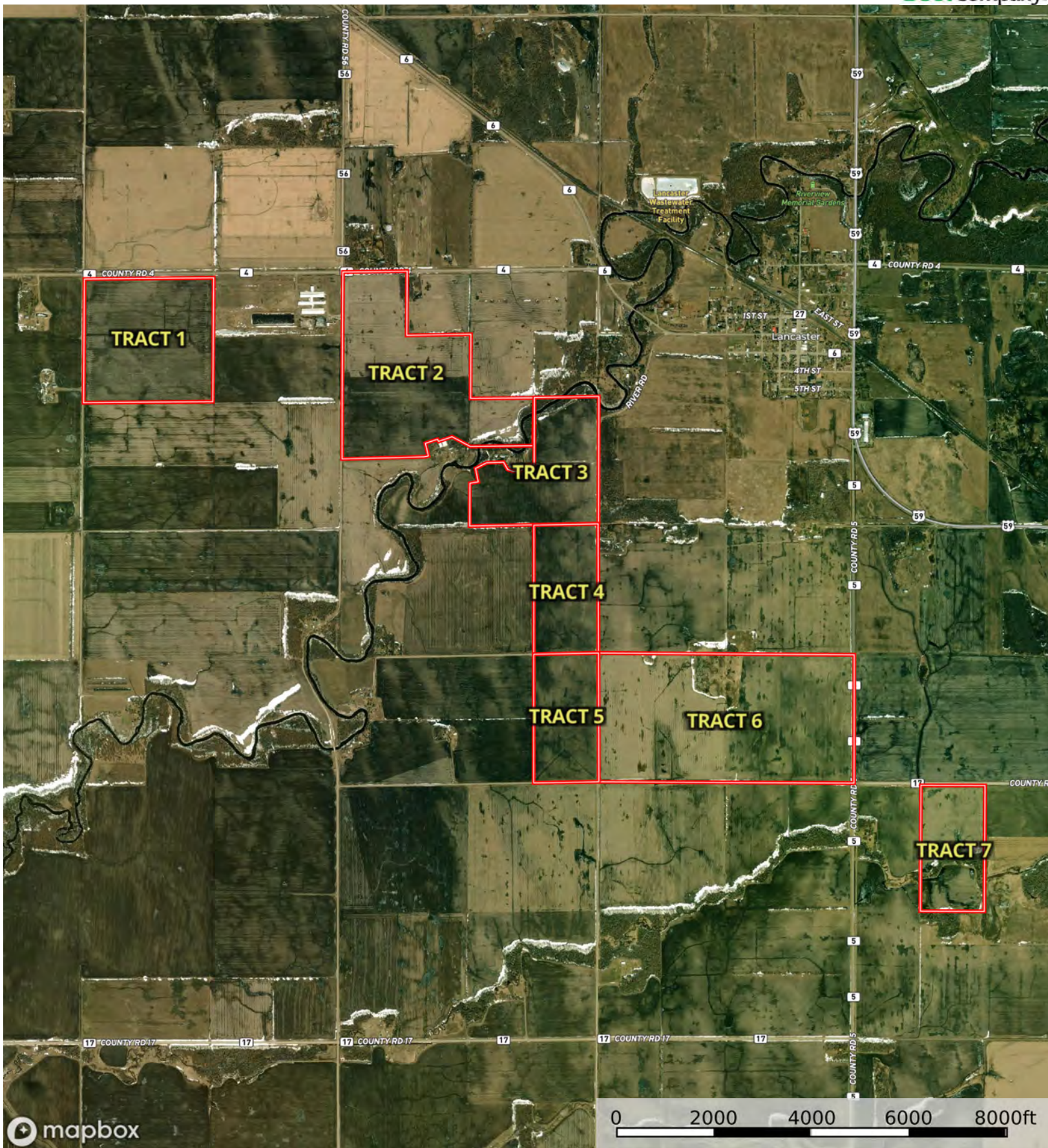


Boundary



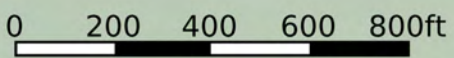
Boundary

L-2500129

Kittson County, Minnesota, 1158.33 AC +/-



Boundary

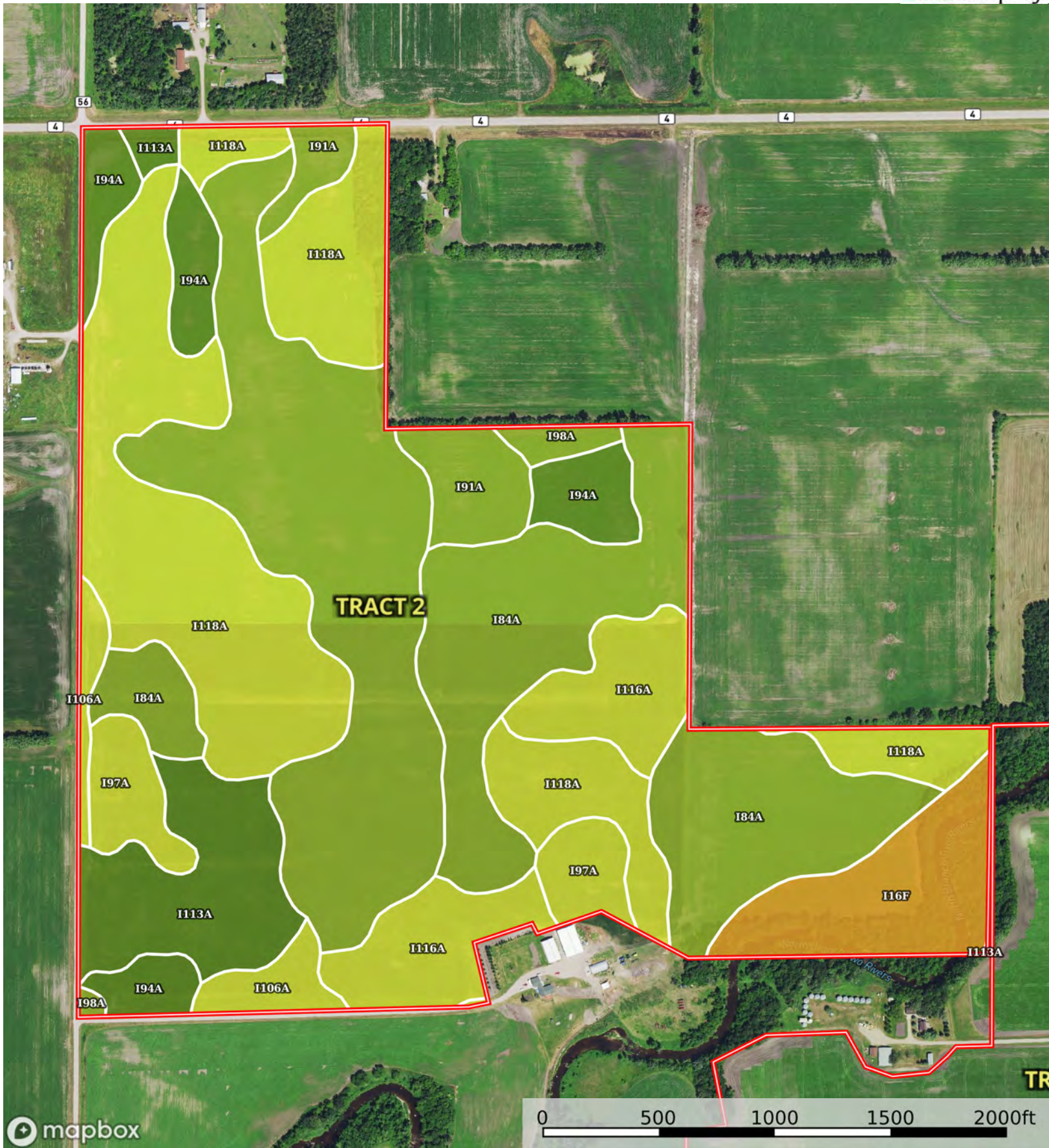


| Boundary 155.38 ac

SOIL CODE	SOIL DESCRIPTION	ACRES	%	CPI	NCCPI	CAP
I128A	Noyes sandy clay loam, 0 to 2 percent slopes	76.78	49.41	74	48	2w
I133A	Northcote clay, 0 to 1 percent slopes	48.38	31.13	75	53	2w
I129A	Croke very fine sandy loam, 0 to 2 percent slopes	19.75	12.71	85	62	2c
I93A	Viking clay loam, dense till, 0 to 1 percent slopes	7.63	4.91	77	56	2w
I376A	Colvin silty clay loam, 0 to 1 percent slopes	2.47	1.59	89	48	2w
I745A	Espelie fine sandy loam, 0 to 2 percent slopes	0.37	0.24	70	39	3w
TOTALS		155.38(*)	100%	76.08	51.7	2.0

(\*) Total acres may differ in the second decimal compared to the sum of each acreage soil. This is due to a round error because we only show the acres of each soil with two decimal.





Boundary



| Boundary 214.88 ac

SOIL CODE	SOIL DESCRIPTION	ACRES	%	CPI	NCCPI	CAP
I118A	Poppleton fine sand, dense till, 0 to 2 percent slopes	53.04	24.68	45	34	4s
I98A	Ulen fine sandy loam, dense till, 0 to 2 percent slopes	44.73	20.82	55	33	3e
I84A	Percy loam, 0 to 1 percent slopes, very cobbly	42.04	19.57	70	33	3s
I116A	Grygla loamy fine sand, dense till, 0 to 1 percent slopes	15.65	7.28	70	36	4w
I113A	Grimstad fine sandy loam, dense till, 0 to 2 percent slopes	14.91	6.94	88	36	2s
I16F	Fluvaquents,frequently flooded-Hapludolls complex, 0 to 30 percent slopes	12.46	5.8	20	23	6w
I94A	Strathcona fine sandy loam, dense till, 0 to 1 percent slopes	12.05	5.61	80	34	2w
I97A	Cormant loamy fine sand, dense till, 0 to 2 percent slopes	7.84	3.65	45	32	4w
I91A	Rosewood fine sandy loam, dense till, 0 to 1 percent slopes	7.25	3.37	55	32	3w
I106A	Enstrom loamy fine sand, dense till, 0 to 2 percent slopes	4.91	2.29	74	32	4s
TOTALS		214.88(*)	100%	58.29	33.06	3.43









(\*) Total acres may differ in the second decimal compared to the sum of each acreage soil. This is due to a round error because we only show the acres of each soil with two decimal.

## Capability Legend

Increased Limitations and Hazards

Decreased Adaptability and Freedom of Choice Users

Land, Capability

								
	1	2	3	4	5	6	7	8
'Wild Life'	•	•	•	•	•	•	•	•
Forestry	•	•	•	•	•	•	•	
Limited	•	•	•	•	•	•	•	
Moderate	•	•	•	•	•	•		
Intense	•	•	•	•	•			
Limited	•	•	•	•				
Moderate	•	•	•					
Intense	•	•						
Very Intense	•							

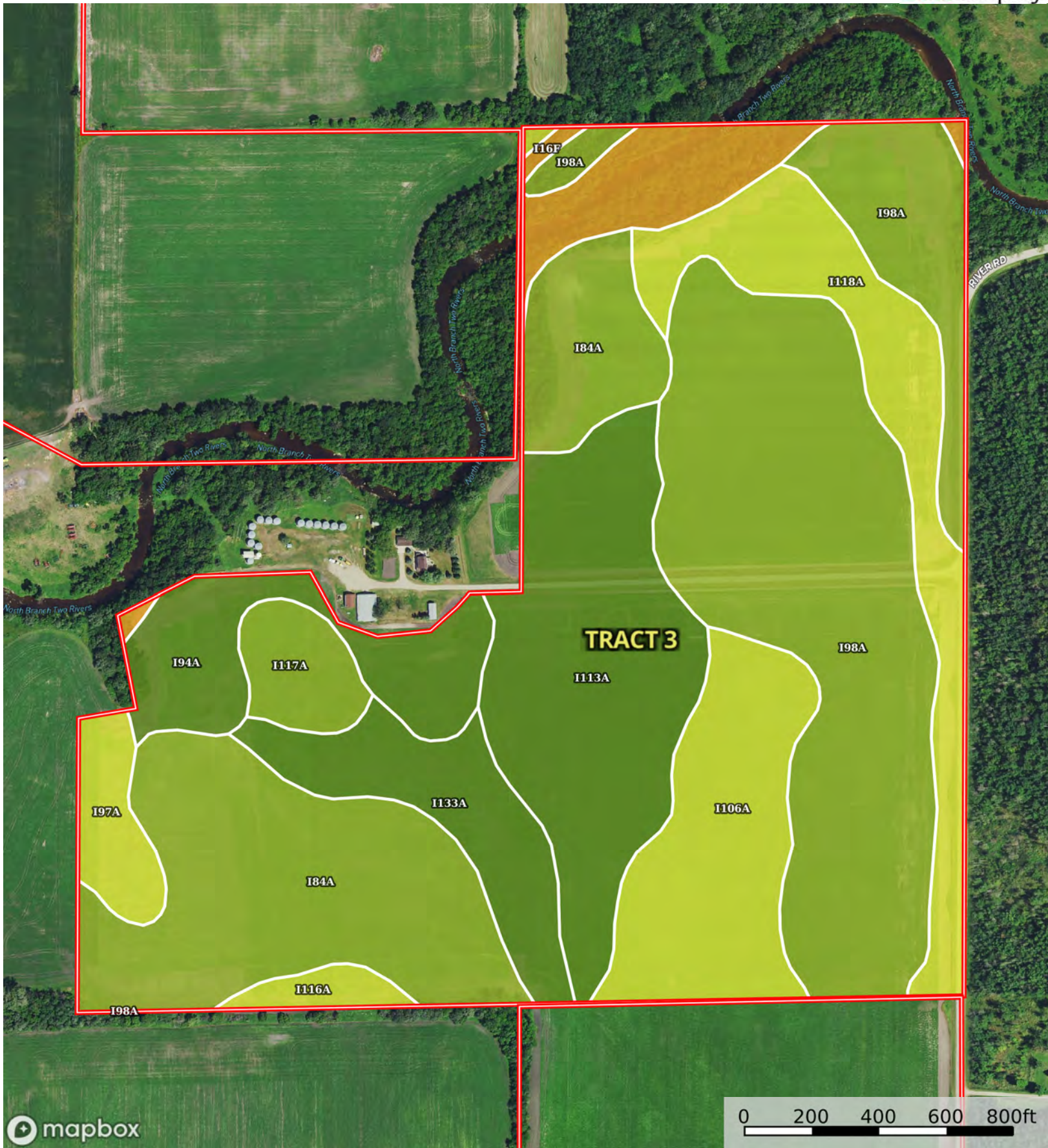
### Grazing Cultivation

(c) climatic limitations (e) susceptibility to erosion

(s) soil limitations within the rooting zone (w) excess of water

L-2500129

Kittson County, Minnesota, 1158.33 AC +/-



Boundary



The information contained herein was obtained from sources deemed to be reliable. Land id™ Services makes no warranties or guarantees as to the completeness or accuracy thereof.



| Boundary 115.53 ac

SOIL CODE	SOIL DESCRIPTION	ACRES	%	CPI	NCCPI	CAP
I98A	Ulen fine sandy loam, dense till, 0 to 2 percent slopes	32.89	28.47	55	33	3e
I84A	Percy loam, 0 to 1 percent slopes, very cobbly	21.26	18.4	70	33	3s
I113A	Grimstad fine sandy loam, dense till, 0 to 2 percent slopes	15.96	13.81	88	36	2s
I118A	Poppleton fine sand, dense till, 0 to 2 percent slopes	10.56	9.14	45	34	4s
I106A	Enstrom loamy fine sand, dense till, 0 to 2 percent slopes	10.32	8.93	74	32	4s
I94A	Strathcona fine sandy loam, dense till, 0 to 1 percent slopes	6.55	5.67	80	34	2w
I133A	Northcote clay, 0 to 1 percent slopes	6.55	5.67	75	53	2w
I16F	Fluvaquents,frequently flooded-Hapludolls complex, 0 to 30 percent slopes	4.94	4.28	20	23	6w
I117A	Skagen loam, dense till, 0 to 2 percent slopes, very cobbly	2.7	2.34	75	48	3s
I97A	Cormant loamy fine sand, dense till, 0 to 2 percent slopes	2.62	2.27	45	32	4w
I116A	Grygla loamy fine sand, dense till, 0 to 1 percent slopes	1.18	1.02	70	36	4w
TOTALS		115.53(*)	100%	64.55	34.54	3.09









(\*) Total acres may differ in the second decimal compared to the sum of each acreage soil. This is due to a round error because we only show the acres of each soil with two decimal.

## Capability Legend

Increased Limitations and Hazards

Decreased Adaptability and Freedom of Choice Users

Land, Capability

								
	1	2	3	4	5	6	7	8
'Wild Life'	•	•	•	•	•	•	•	•
Forestry	•	•	•	•	•	•	•	
Limited	•	•	•	•	•	•	•	
Moderate	•	•	•	•	•	•		
Intense	•	•	•	•	•			
Limited	•	•	•	•				
Moderate	•	•	•					
Intense	•	•						
Very Intense	•							

### Grazing Cultivation

(c) climatic limitations (e) susceptibility to erosion

(s) soil limitations within the rooting zone (w) excess of water