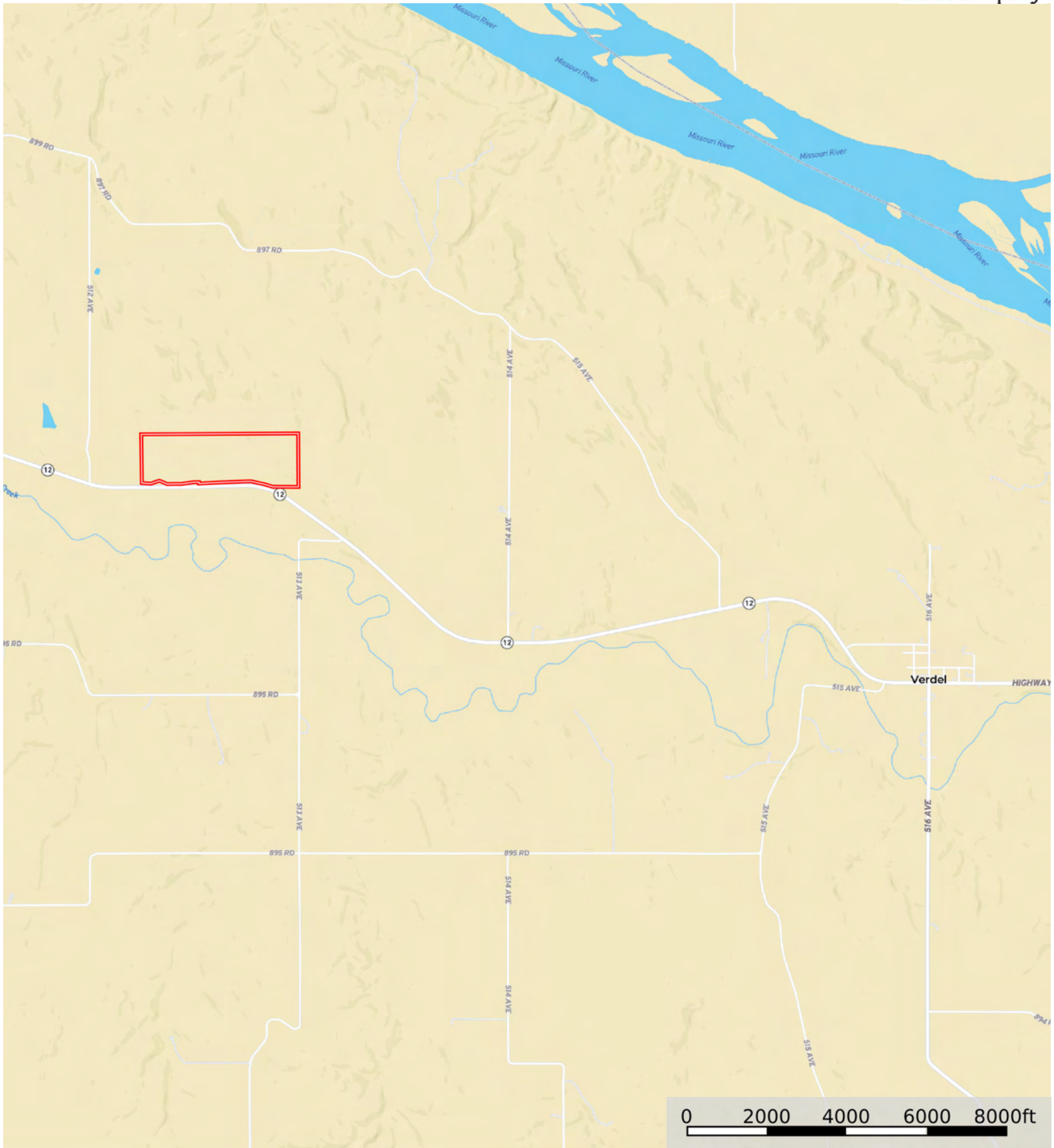


L-2500154

Knox County, Nebraska, 112.32 AC +/-



Boundary



The information contained herein was obtained from sources deemed to be reliable. Land id™ Services makes no warranties or guarantees as to the completeness or accuracy thereof.



Boundary

L-2500154

Knox County, Nebraska, 112.32 AC +/-



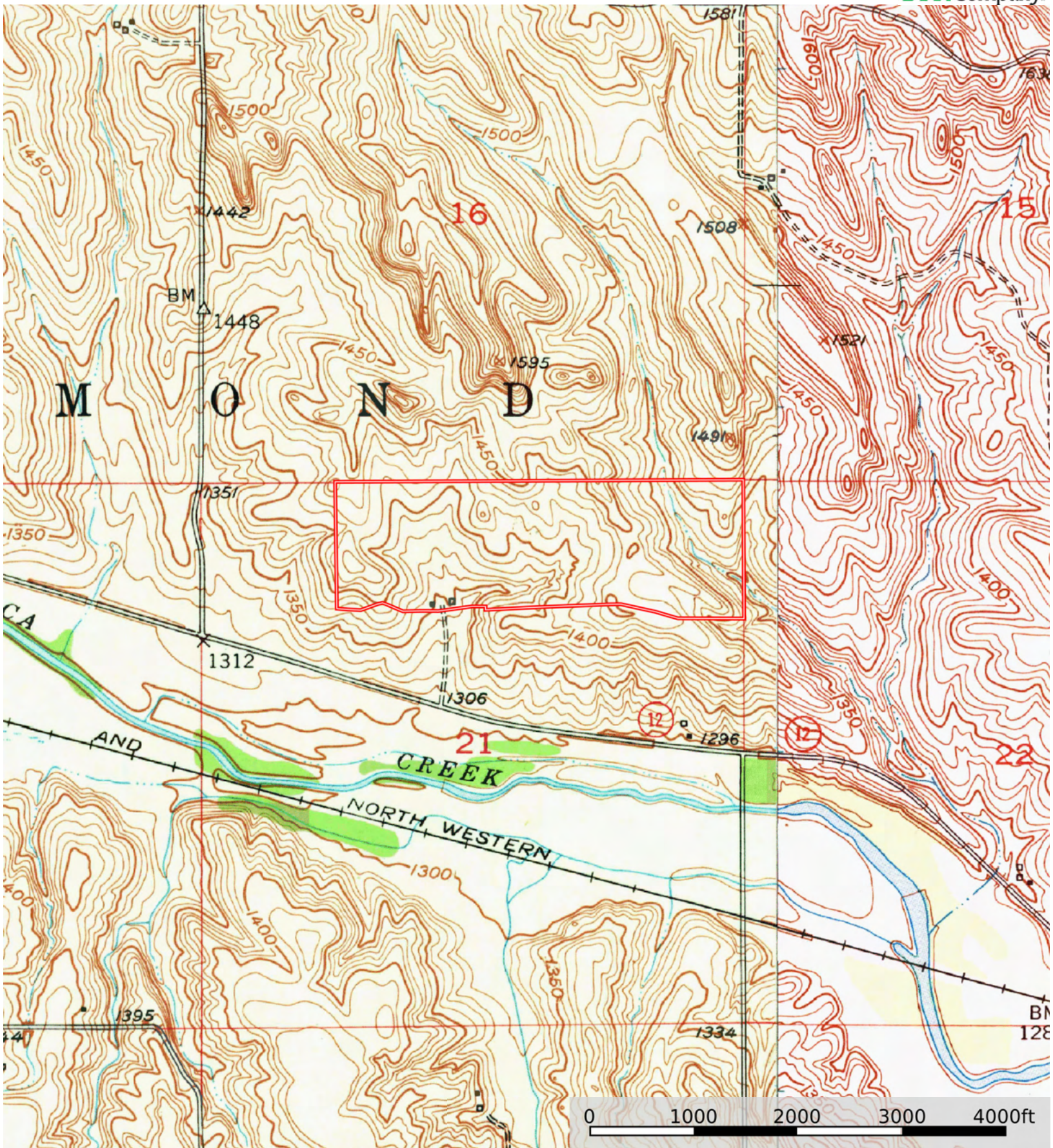
Boundary

| Boundary 112.63 ac

SOIL CODE	SOIL DESCRIPTION	ACRES	%	CPI	NCCPI	CAP
3221	Labu silty clay, 6 to 11 percent slopes	43.82	38.91	0	22	4e
3235	Monowi-Verdel complex, 6 to 11 percent slopes	25.97	23.06	0	36	4e
3225	Labu-Sansarc silty clays, 9 to 35 percent slopes	22.73	20.18	33	25	6e
3328	Verdel silty clay, 2 to 6 percent slopes	12.44	11.05	0	45	3e
6753	Nora silt loam, 2 to 6 percent slopes	5.2	4.62	52	76	2e
3232	Monowi-Bristow complex, 11 to 30 percent slopes	2.47	2.19	0	20	6e
TOTALS		112.6 3(*)	100%	9.06	30.82	4.24

(*) Total acres may differ in the second decimal compared to the sum of each acreage soil. This is due to a round error because we only show the acres of each soil with two decimal.





Boundary

