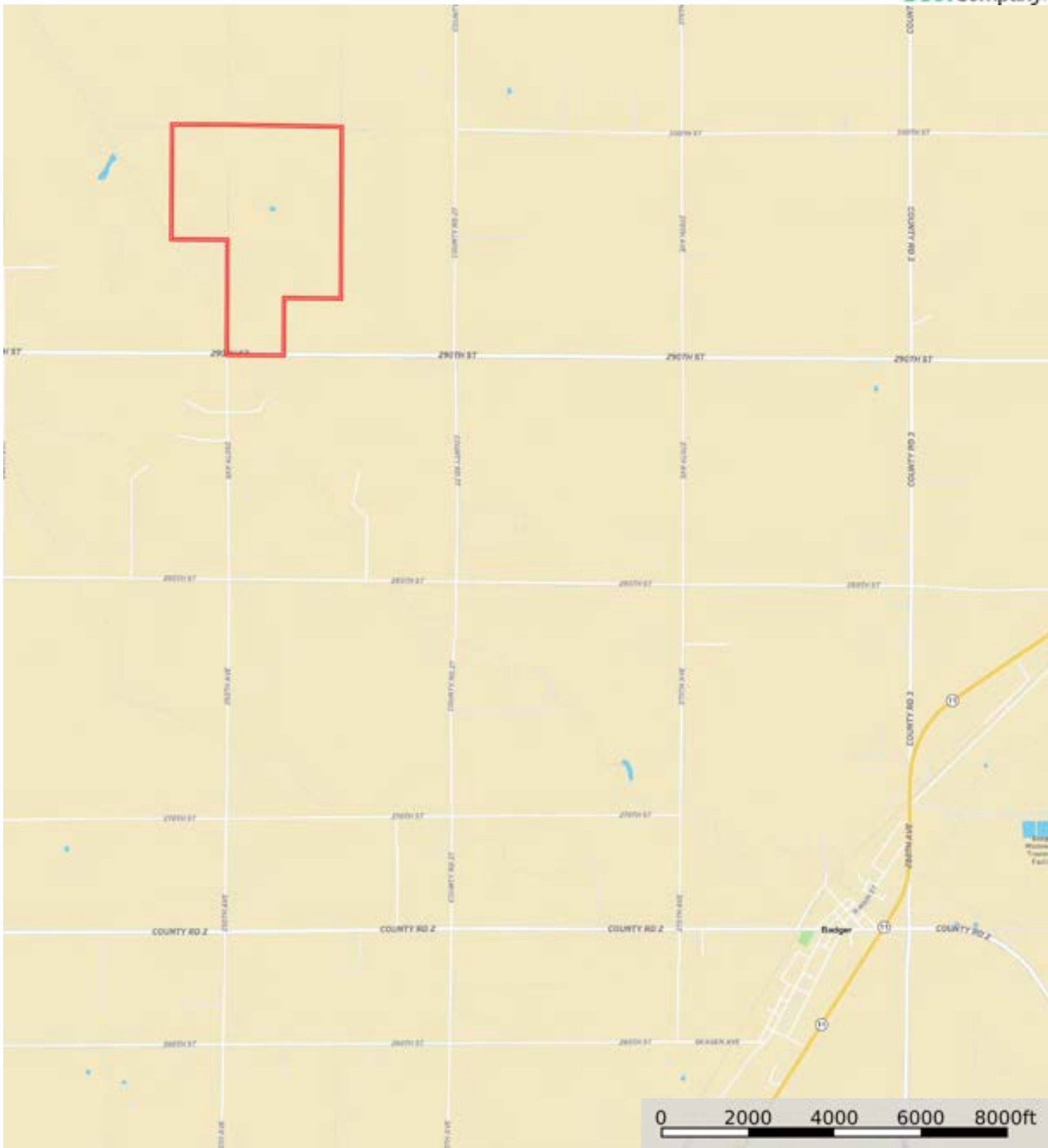



L-2500161

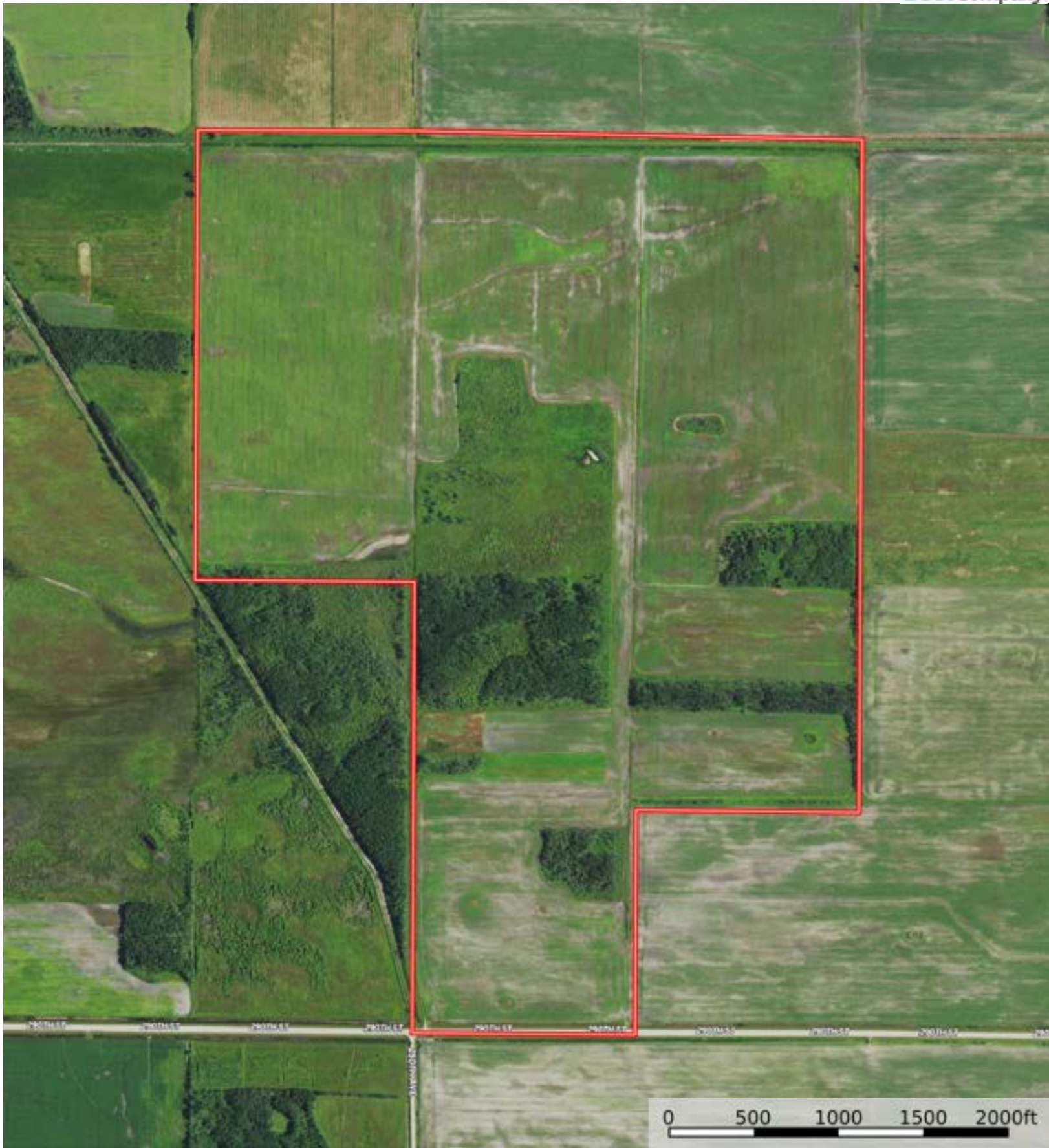
Roseau County, Minnesota, 360 AC +/-




 Boundary

L-2500161

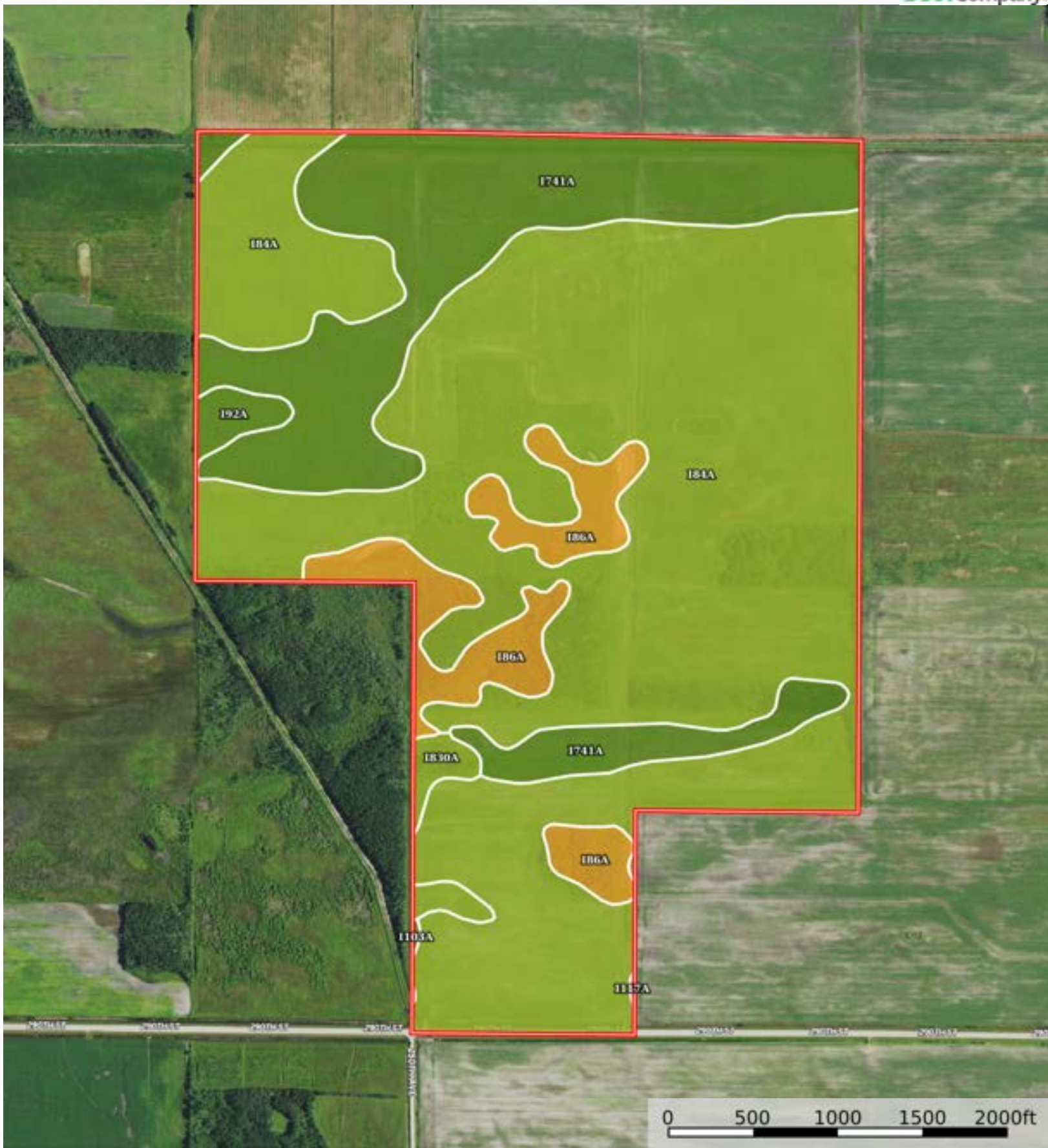
Roseau County, Minnesota, 360 AC +/-



 Boundary

L-2500161

Roseau County, Minnesota, 360 AC +/-



Boundary

Boundary 362.69 ac

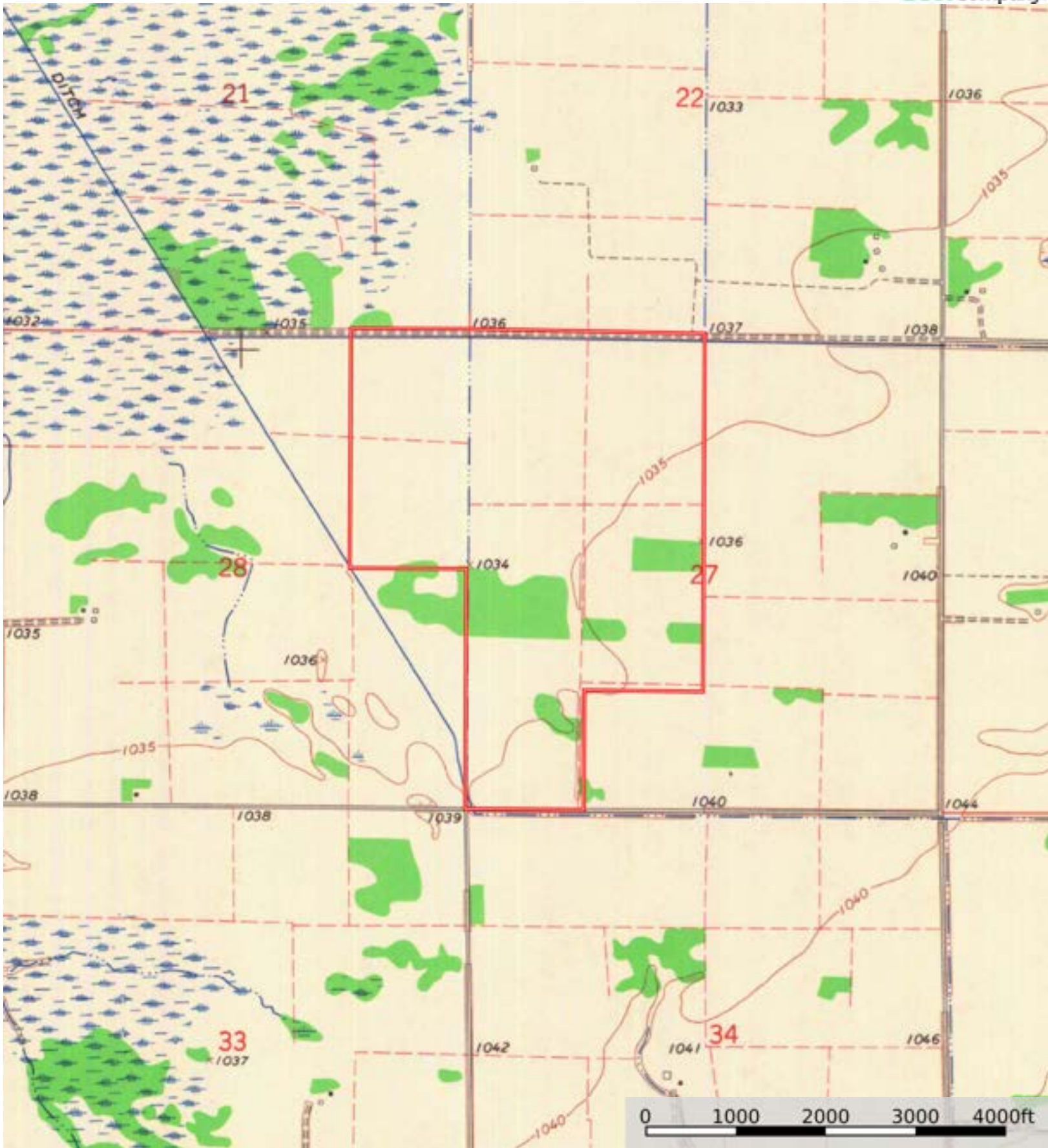
SOIL CODE	SOIL DESCRIPTION	ACRES	%	CPI	NCCPI	CAP
I84A	Percy loam, 0 to 1 percent slopes, very cobbly	246.7 2	68.03	70	33	3s
I741A	Boash clay loam, dense till, 0 to 1 percent slopes	81.1	22.36	88	51	2w
I86A	Percy mucky loam, 0 to 1 percent slopes	26.55	7.32	15	28	6w
I830A	Woodslake clay, 0 to 1 percent slopes	4.47	1.23	86	31	3w
I92A	Grano clay, 0 to 1 percent slopes	3.54	0.98	79	53	2w
I103A	Kratka fine sandy loam, dense till, 0 to 1 percent slopes	0.21	0.06	77	37	2w
I117A	Skagen loam, dense till, 0 to 2 percent slopes, very cobbly	0.1	0.03	75	48	3s
TOTALS		362.6 9(*)	100%	70.29	36.84	2.99

(\*) Total acres may differ in the second decimal compared to the sum of each acreage soil. This is due to a round error because we only show the acres of each soil with two decimal.



L-2500161

Roseau County, Minnesota, 360 AC +/-



 Boundary



The information contained herein was obtained from sources deemed to be reliable. Land ID™ Services makes no warranties or guarantees as to the completeness or accuracy thereof.