
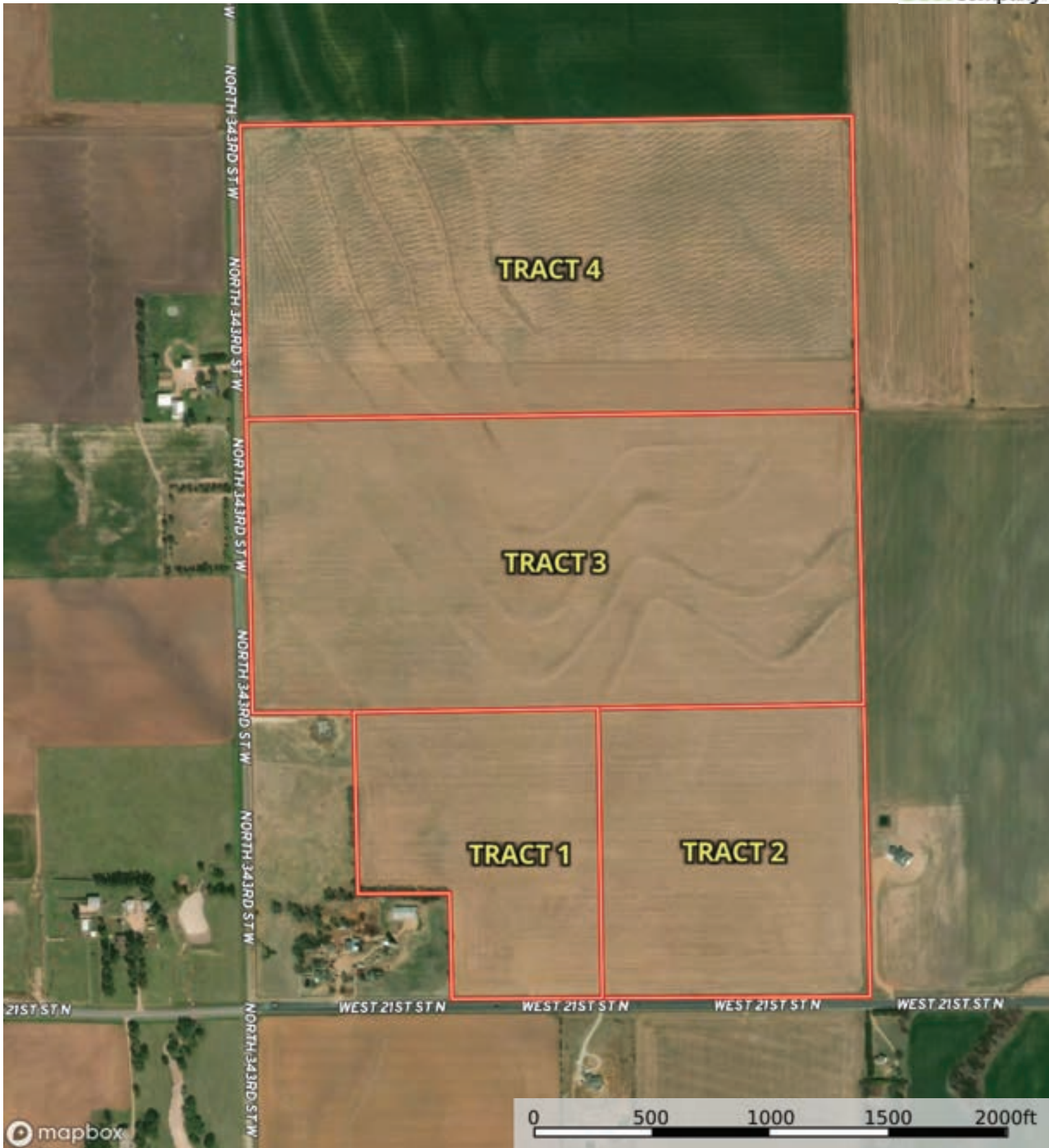


 Boundary



 Boundary



 Boundary



mapbox

Boundary



 Boundary

|  Boundary 24.95 ac

SOIL CODE	SOIL DESCRIPTION	ACRES	%	CPI	NCCPI	CAP
5960	Shellabarger-Nalim complex, 1 to 3 percent slopes	17.75	71.11	0	57	2e
5926	Penalosa silt loam, 1 to 3 percent slopes	6.16	24.68	0	61	2s
5956	Shellabarger sandy loam, 1 to 3 percent slopes	1.04	4.17	0	53	2e
TOTALS		24.95(*)	100%	-	57.8	2.0

(*) Total acres may differ in the second decimal compared to the sum of each acreage soil. This is due to a round error because we only show the acres of each soil with two decimal.







mapbox

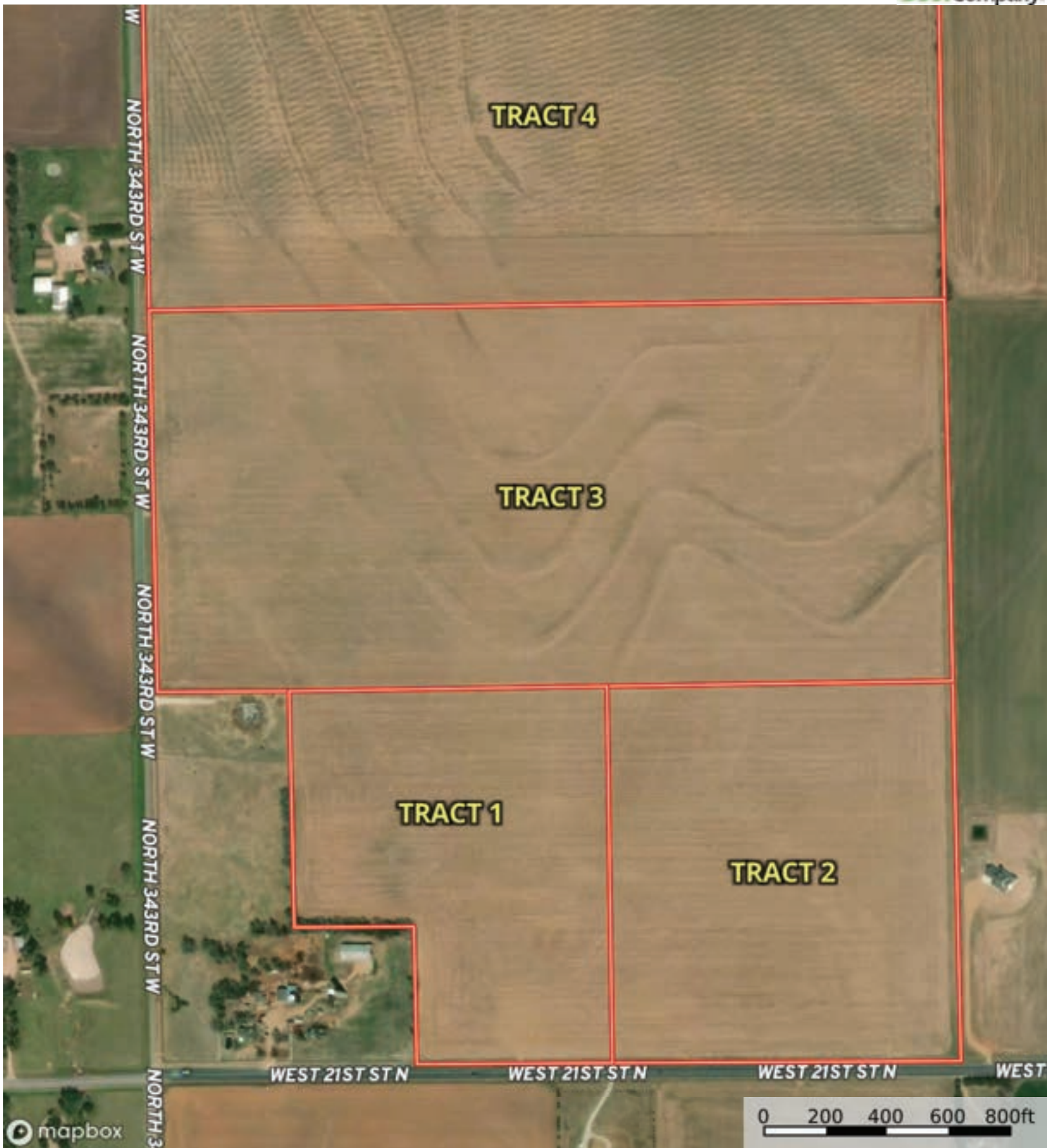
Boundary


Boundary 32.06 ac

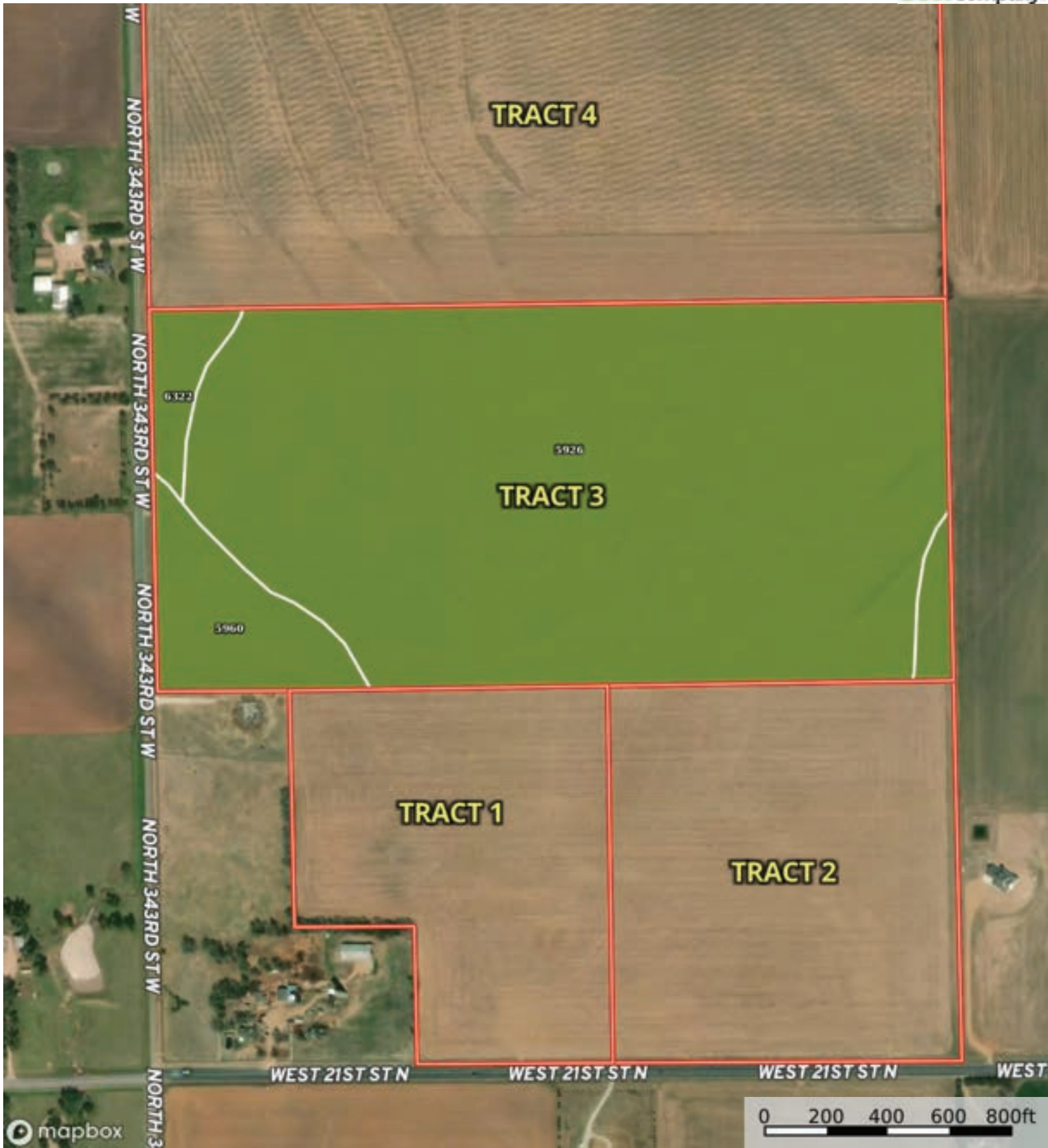
SOIL CODE	SOIL DESCRIPTION	ACRES	%	CPI	NCCPI	CAP
5960	Shellabarger-Nalim complex, 1 to 3 percent slopes	21.37	66.68	0	57	2e
5926	Penalosa silt loam, 1 to 3 percent slopes	9.33	29.11	0	61	2s
5924	Ost-Clark loams, 1 to 3 percent slopes	1.36	4.24	0	69	2e
TOTALS		32.06(*)	100%	-	58.69	2.0

(*) Total acres may differ in the second decimal compared to the sum of each acreage soil. This is due to a round error because we only show the acres of each soil with two decimal.





 Boundary



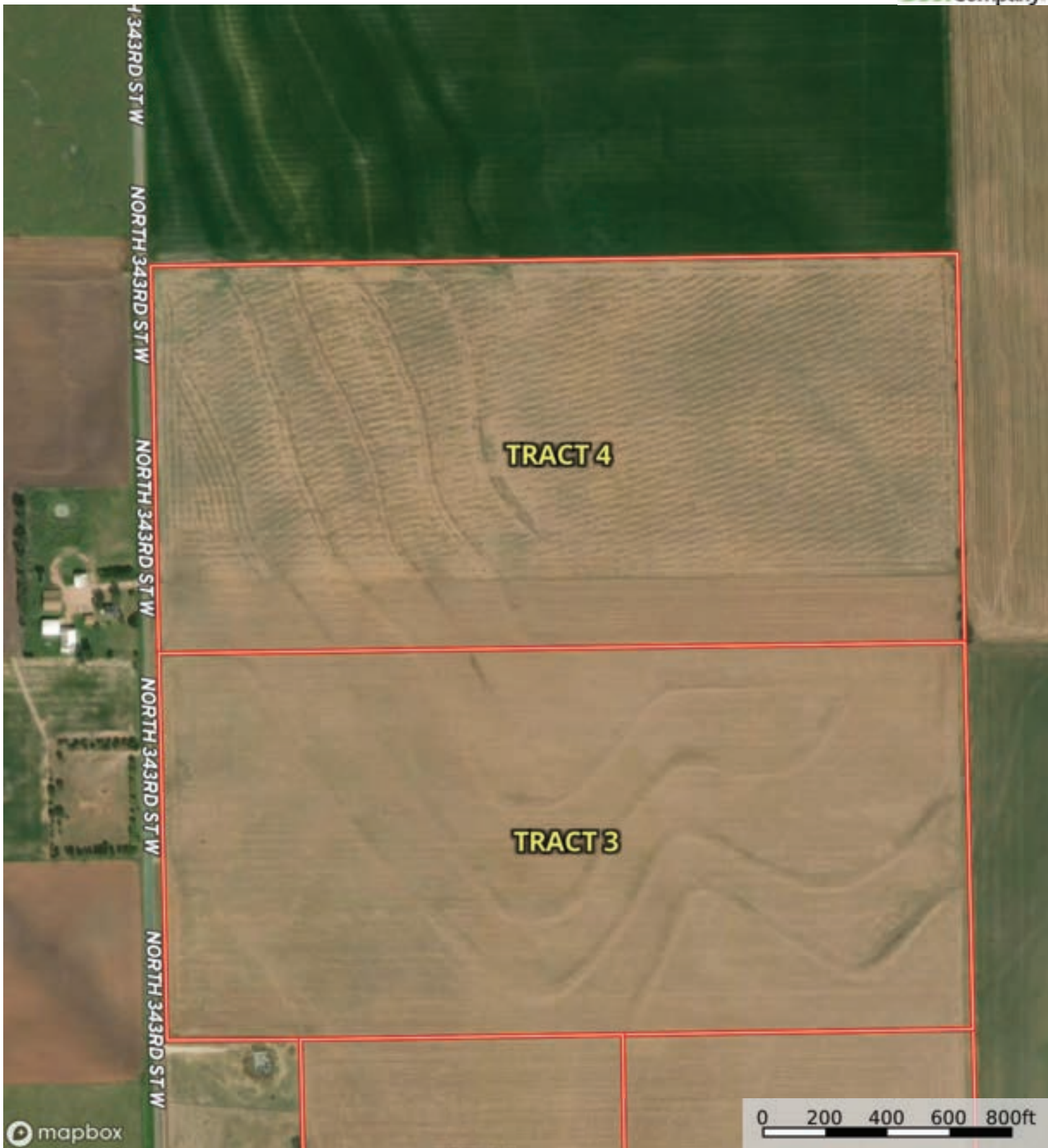
 Boundary

Boundary 74.11 ac

SOIL CODE	SOIL DESCRIPTION	ACRES	%	CPI	NCCPI	CAP
5926	Penalosa silt loam, 1 to 3 percent slopes	64.75	87.37	0	61	2s
5960	Shellabarger-Nalim complex, 1 to 3 percent slopes	7.13	9.62	0	57	2e
6322	Blanket silt loam, 0 to 1 percent slopes	2.23	3.01	0	64	2c
TOTALS		74.11(*)	100%	-	60.71	2.0

(*) Total acres may differ in the second decimal compared to the sum of each acreage soil. This is due to a round error because we only show the acres of each soil with two decimal.





 Boundary



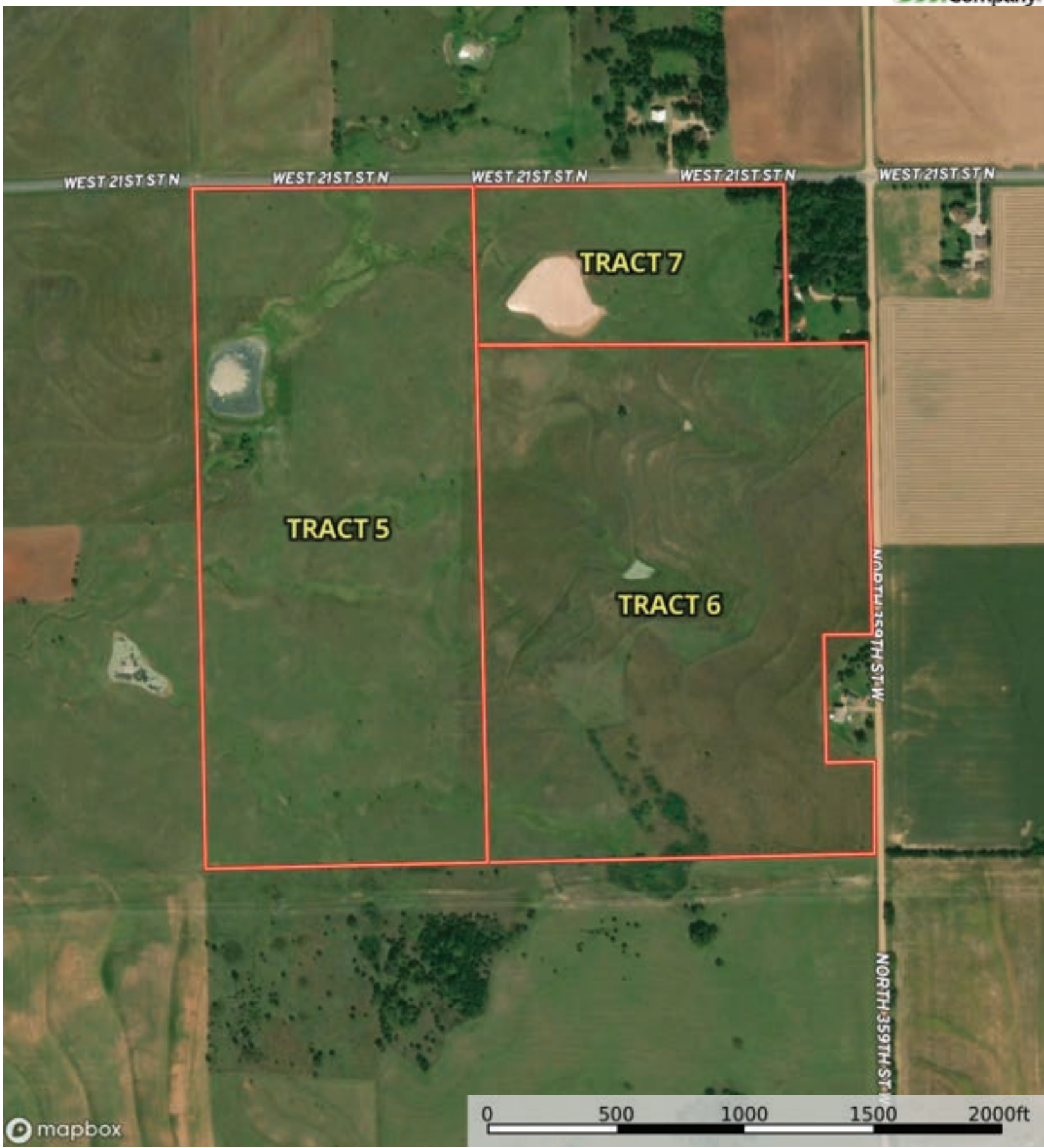
 Boundary

Boundary 74.34 ac

SOIL CODE	SOIL DESCRIPTION	ACRES	%	CPI	NCCPI	CAP
5926	Penalosa silt loam, 1 to 3 percent slopes	60.43	81.3	0	61	2s
6322	Blanket silt loam, 0 to 1 percent slopes	8.12	10.92	0	64	2c
5960	Shellabarger-Nalim complex, 1 to 3 percent slopes	5.79	7.79	0	57	2e
TOTALS		74.34(*)	100%	-	61.02	2.0

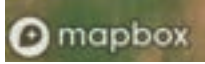
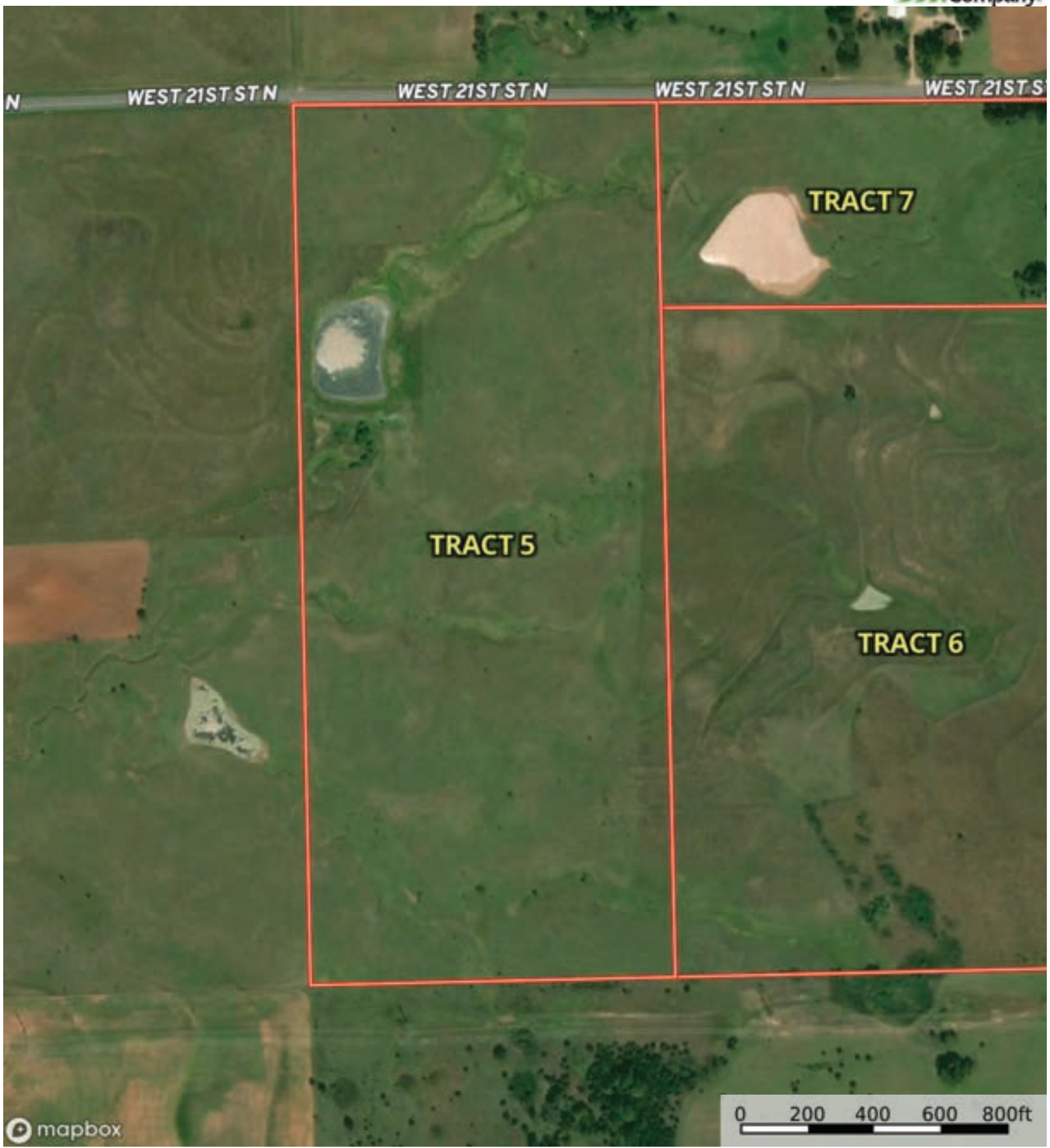
(*) Total acres may differ in the second decimal compared to the sum of each acreage soil. This is due to a round error because we only show the acres of each soil with two decimal.

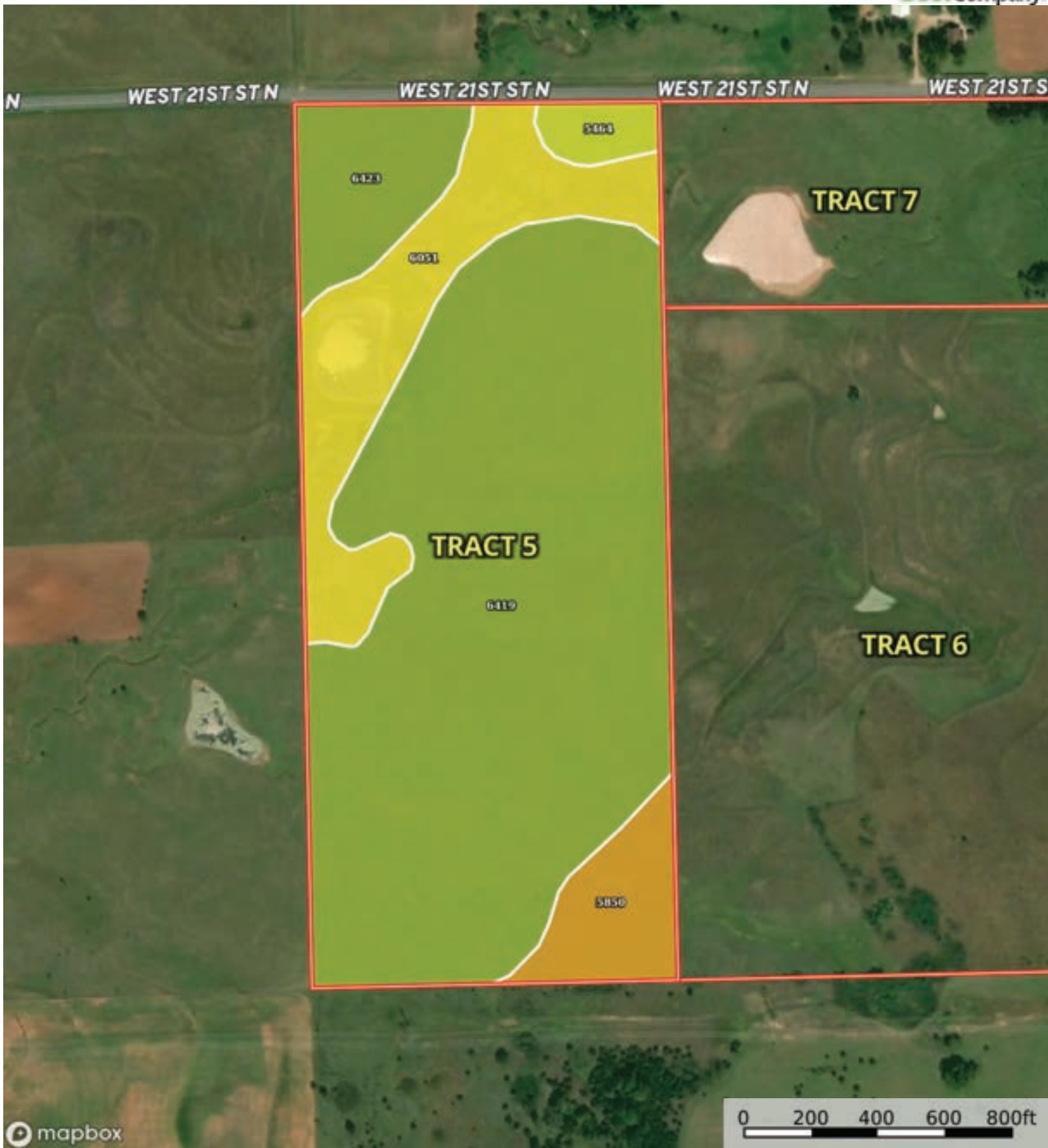




mapbox

Boundary





 Boundary

Boundary 66.68 ac

SOIL CODE	SOIL DESCRIPTION	ACRES	%	CPI	NCCPI	CAP
6419	Renfrow silty clay loam, 1 to 3 percent slopes	45.1	67.65	0	54	3e
6051	Elandco silt loam, frequently flooded	10.89	16.33	0	50	5w
6423	Renfrow-Wellsford clay loams, 1 to 4 percent slopes	5.18	7.77	0	46	3e
5850	Albion and Shellabarger sandy loams, 6 to 15 percent slopes	4.08	6.12	0	45	6e
5464	Wellsford-Rock outcrop complex, 3 to 10 percent slopes	1.43	2.14	0	12	4e
TOTALS		66.68(*)	100%	-	51.28	3.53

(*) Total acres may differ in the second decimal compared to the sum of each acreage soil. This is due to a round error because we only show the acres of each soil with two decimal.





mapbox

Boundary



 Boundary

Boundary 67.83 ac

SOIL CODE	SOIL DESCRIPTION	ACRES	%	CPI	NCCPI	CAP
5850	Albion and Shellabarger sandy loams, 6 to 15 percent slopes	27.24	40.17	0	45	6e
5858	Albion-Shellabarger sandy loams, 1 to 3 percent slopes	27.03	39.86	0	45	3e
6419	Renfrow silty clay loam, 1 to 3 percent slopes	13.56	19.99	0	54	3e
TOTALS		67.83(*)	100%	-	46.81	4.2

(*) Total acres may differ in the second decimal compared to the sum of each acreage soil. This is due to a round error because we only show the acres of each soil with two decimal.





TRACT 7

mapbox

0 200 400 600 800ft

 Boundary



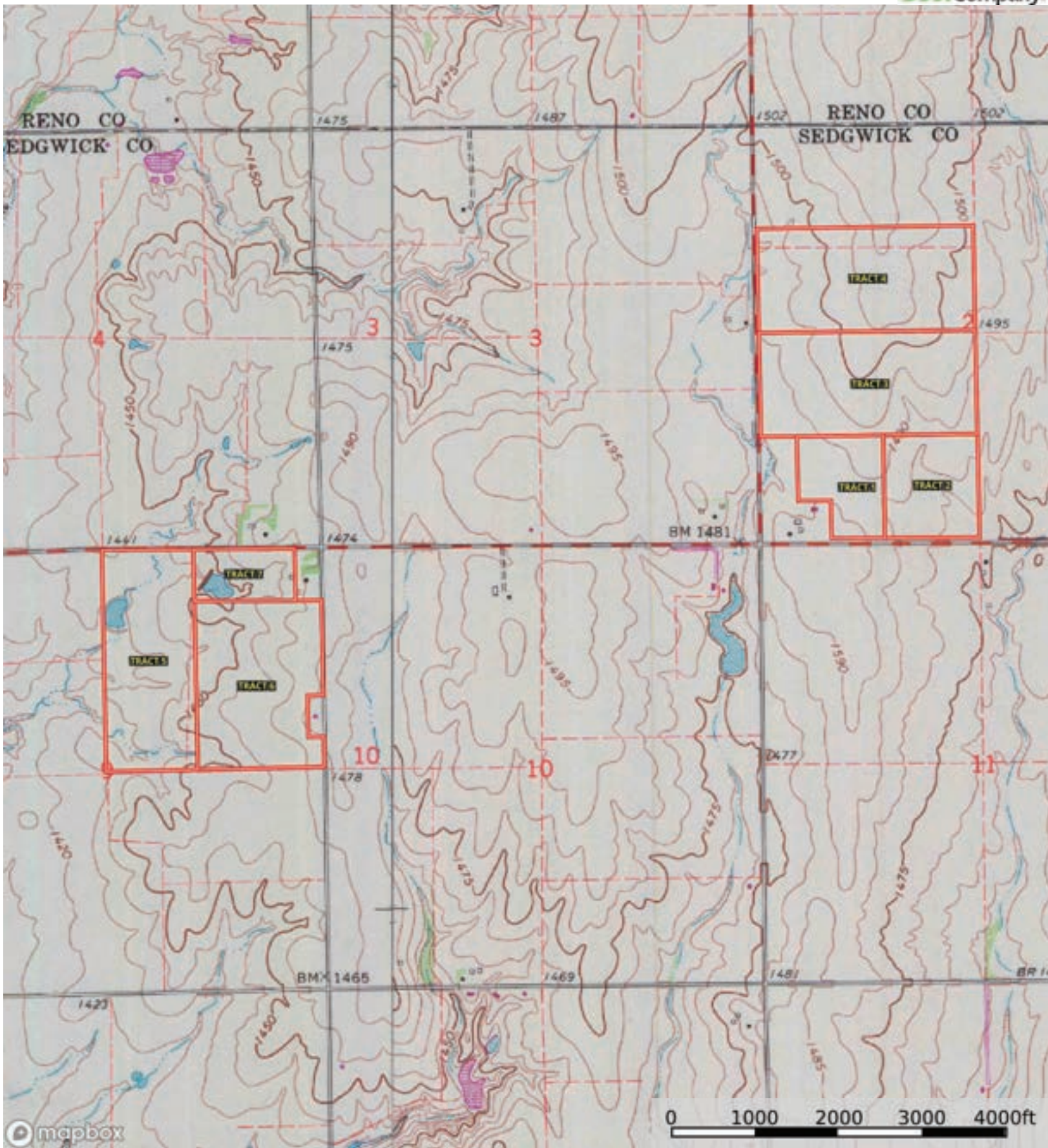
 Boundary

Boundary 17.29 ac

SOIL CODE	SOIL DESCRIPTION	ACRES	%	CPI	NCCPI	CAP
5858	Albion-Shellabarger sandy loams, 1 to 3 percent slopes	9.04	52.28	0	45	3e
6051	Elandco silt loam, frequently flooded	4.11	23.77	0	50	5w
5464	Wellsford-Rock outcrop complex, 3 to 10 percent slopes	2.18	12.61	0	12	4e
6419	Renfrow silty clay loam, 1 to 3 percent slopes	1.23	7.11	0	54	3e
5850	Albion and Shellabarger sandy loams, 6 to 15 percent slopes	0.73	4.22	0	45	6e
TOTALS		17.29(*)	100%	-	42.67	3.73

(*) Total acres may differ in the second decimal compared to the sum of each acreage soil. This is due to a round error because we only show the acres of each soil with two decimal.





 Boundary