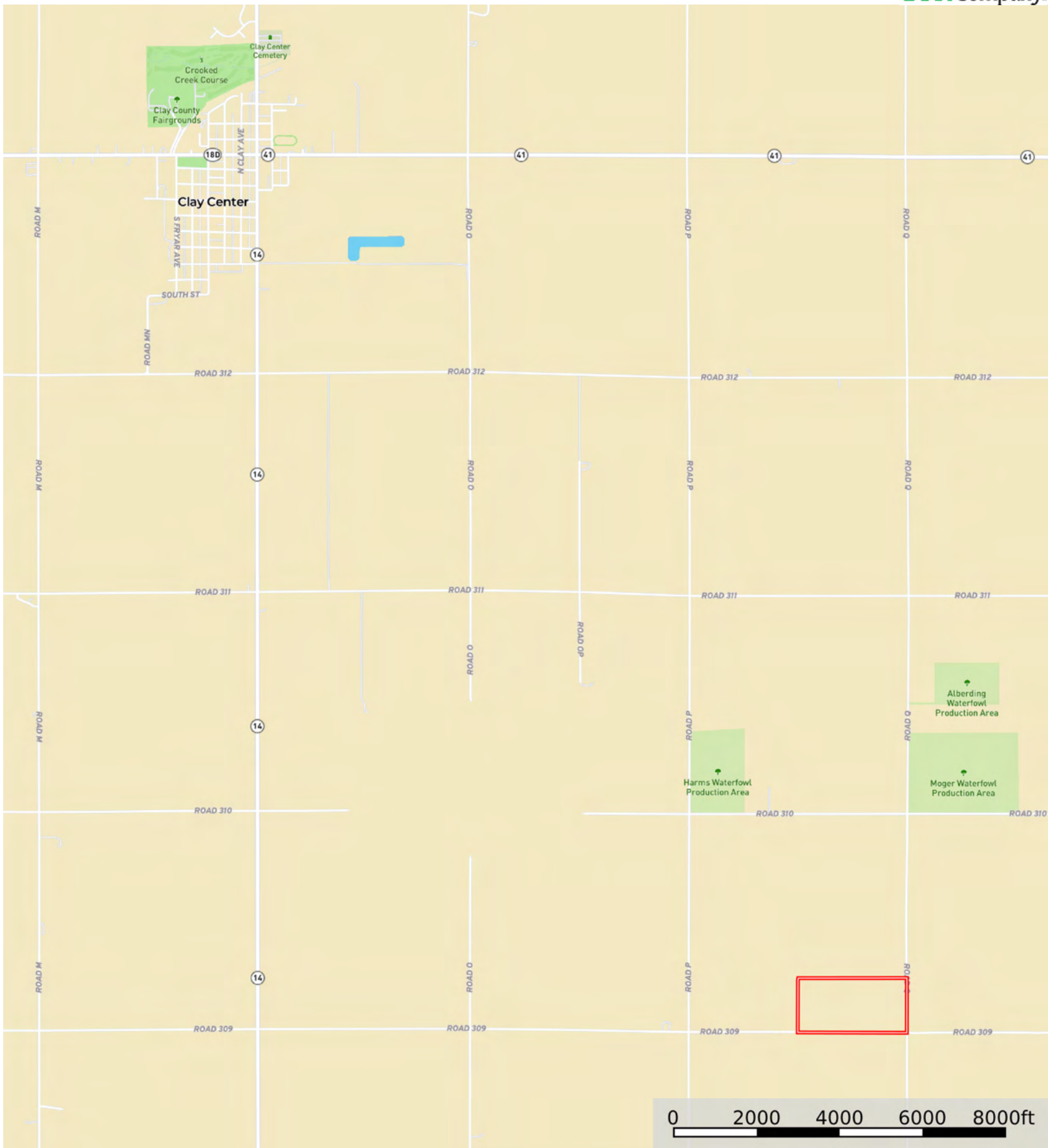
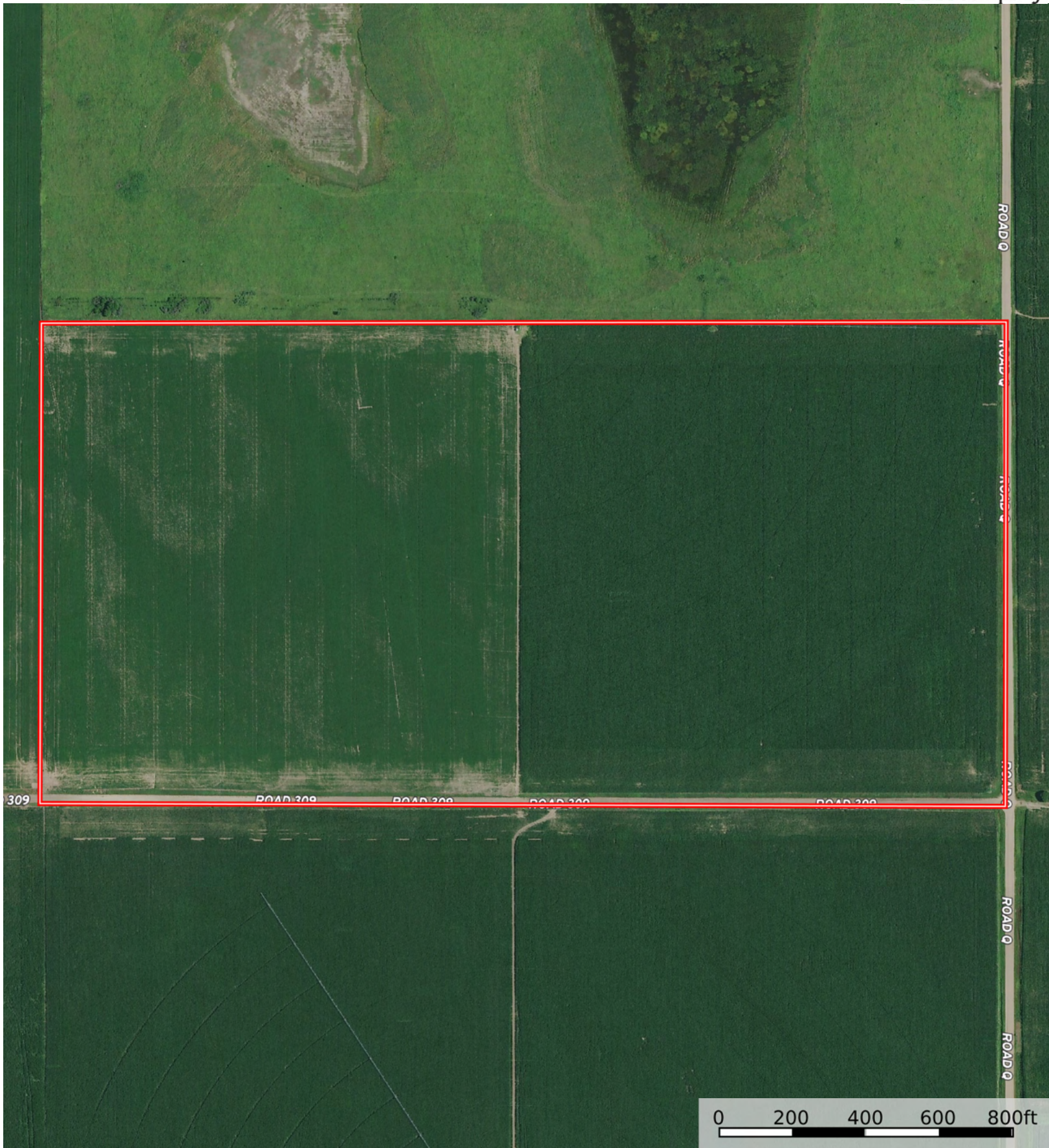


L-2500171

Clay County, Nebraska, 79.65 AC +/-



 Boundary



 Boundary



 Boundary

Boundary 79.59 ac

SOIL CODE	SOIL DESCRIPTION	ACRES	%	CPI	NCCPI	CAP
3870	Hastings silty clay loam, 3 to 7 percent slopes, eroded	77.13	96.91	0	58	3e
3820	Butler silt loam, 0 to 1 percent slopes	1.77	2.22	0	70	2w
3866	Hastings silt loam, 1 to 3 percent slopes	0.52	0.65	0	68	2e
3824	Crete silt loam, 0 to 1 percent slopes	0.17	0.21	0	63	2s
TOTALS		79.59(*)	100%	-	58.34	2.97

(*) Total acres may differ in the second decimal compared to the sum of each acreage soil. This is due to a round error because we only show the acres of each soil with two decimal.

Capability Legend

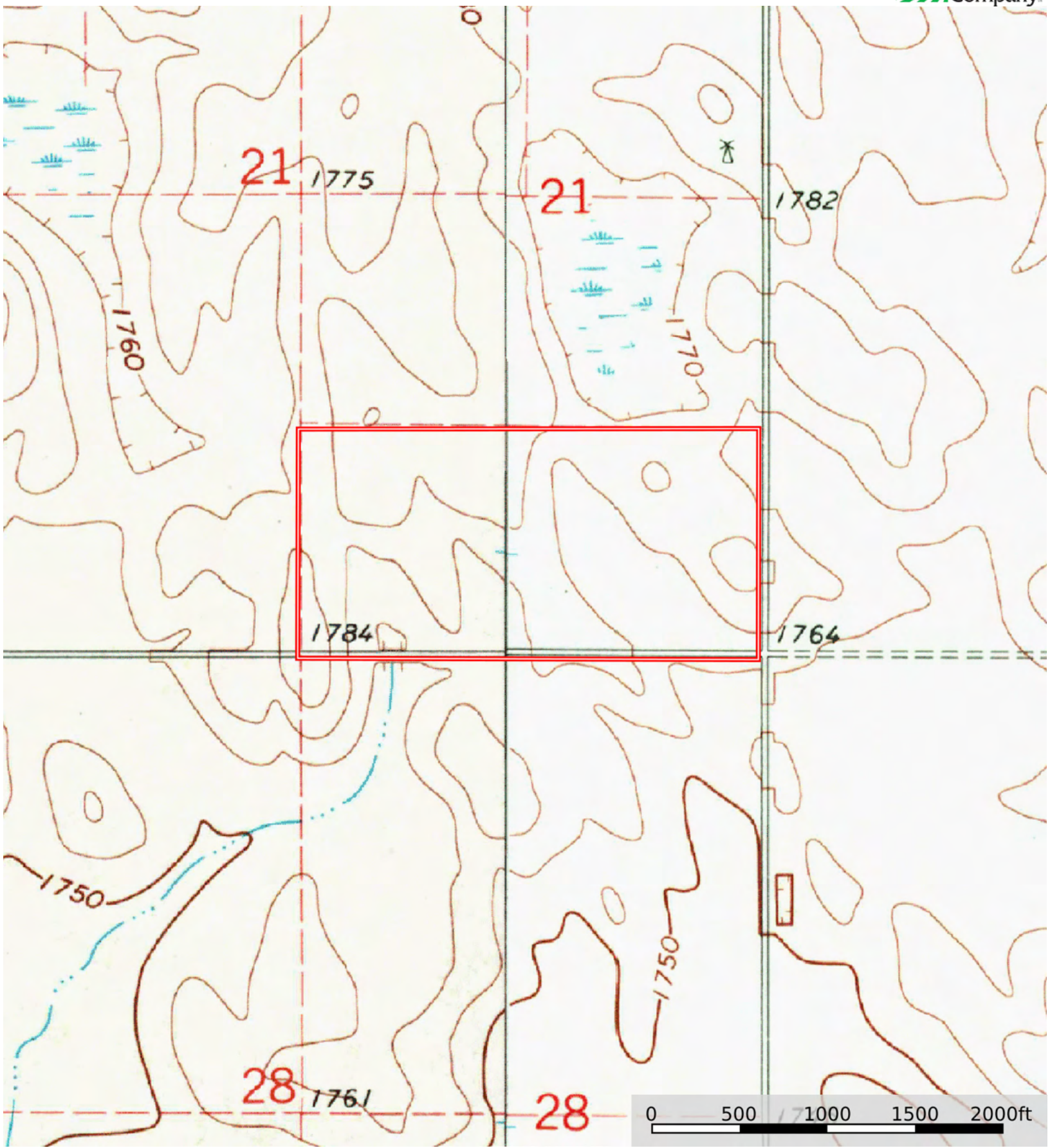
Increased Limitations and Hazards
Decreased Adaptability and Freedom of Choice Users

Land, Capability

	1	2	3	4	5	6	7	8
'Wild Life'	•	•	•	•	•	•	•	•
Forestry	•	•	•	•	•	•	•	
Limited	•	•	•	•	•	•	•	
Moderate	•	•	•	•	•	•		
Intense	•	•	•	•	•			
Limited	•	•	•	•				
Moderate	•	•	•					
Intense	•	•						
Very Intense	•							

Grazing Cultivation

(c) climatic limitations (e) susceptibility to erosion
(s) soil limitations within the rooting zone (w) excess of water



 Boundary