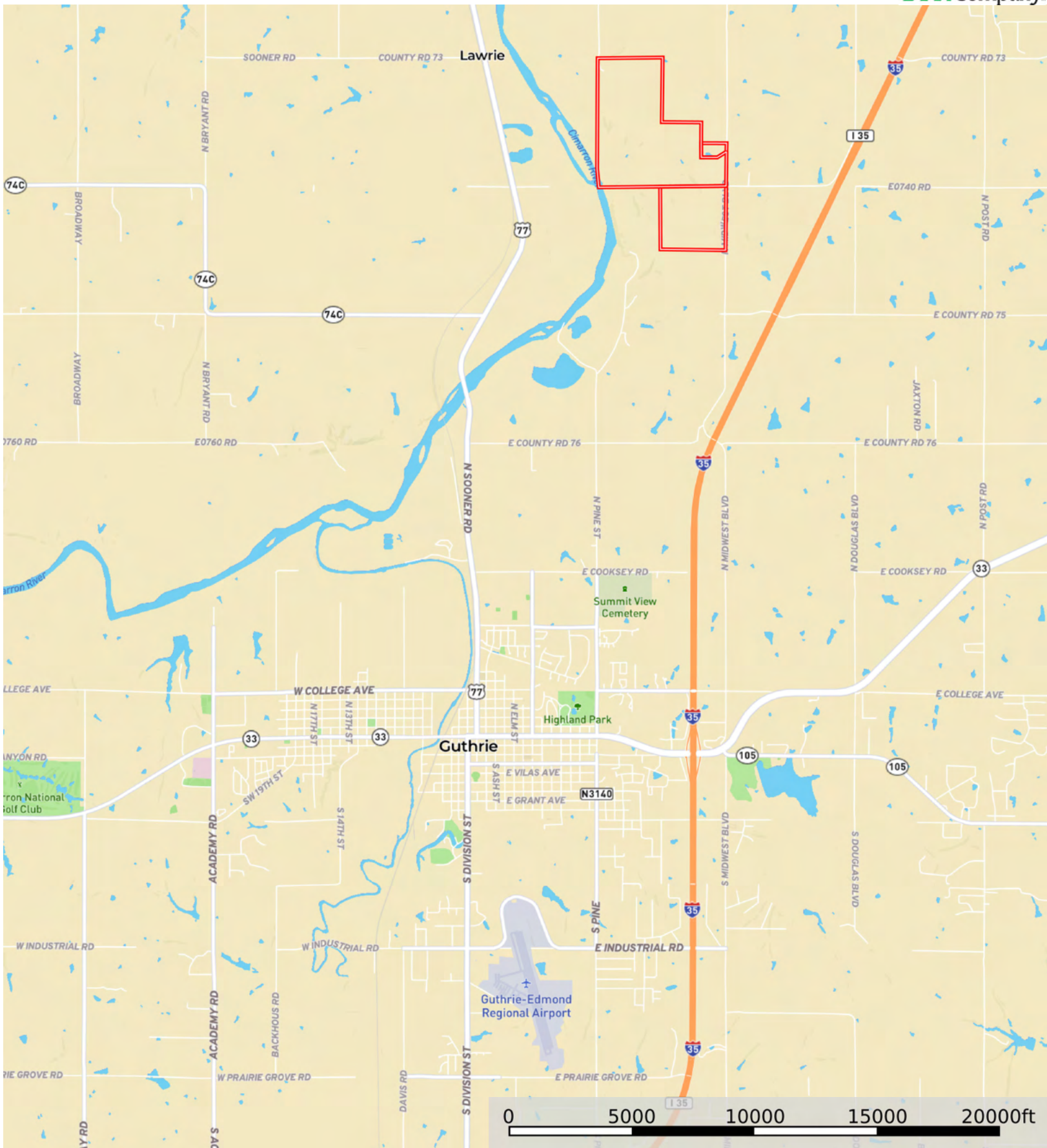
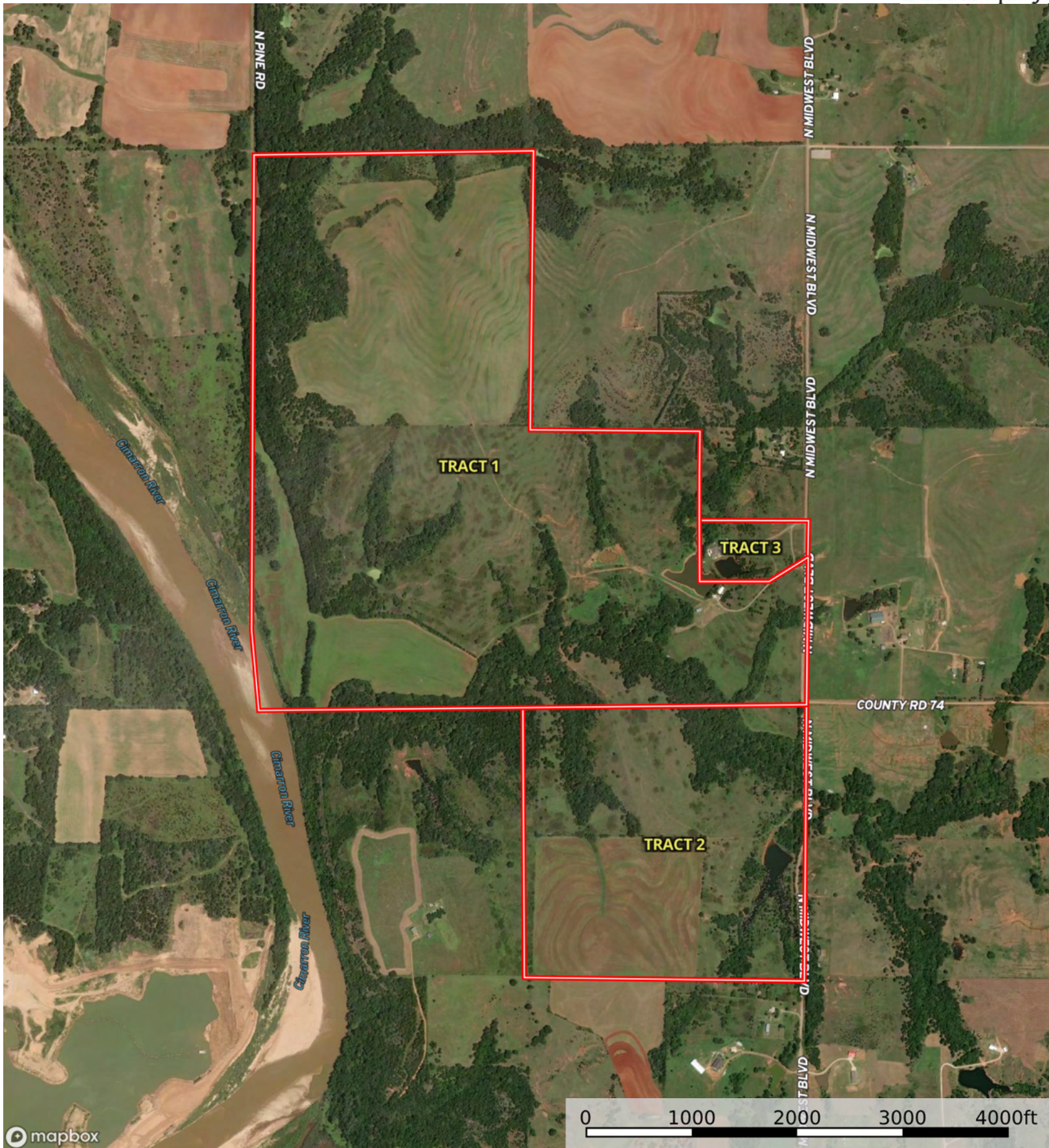


L-2500176

Logan County, Oklahoma, 620 AC +/-

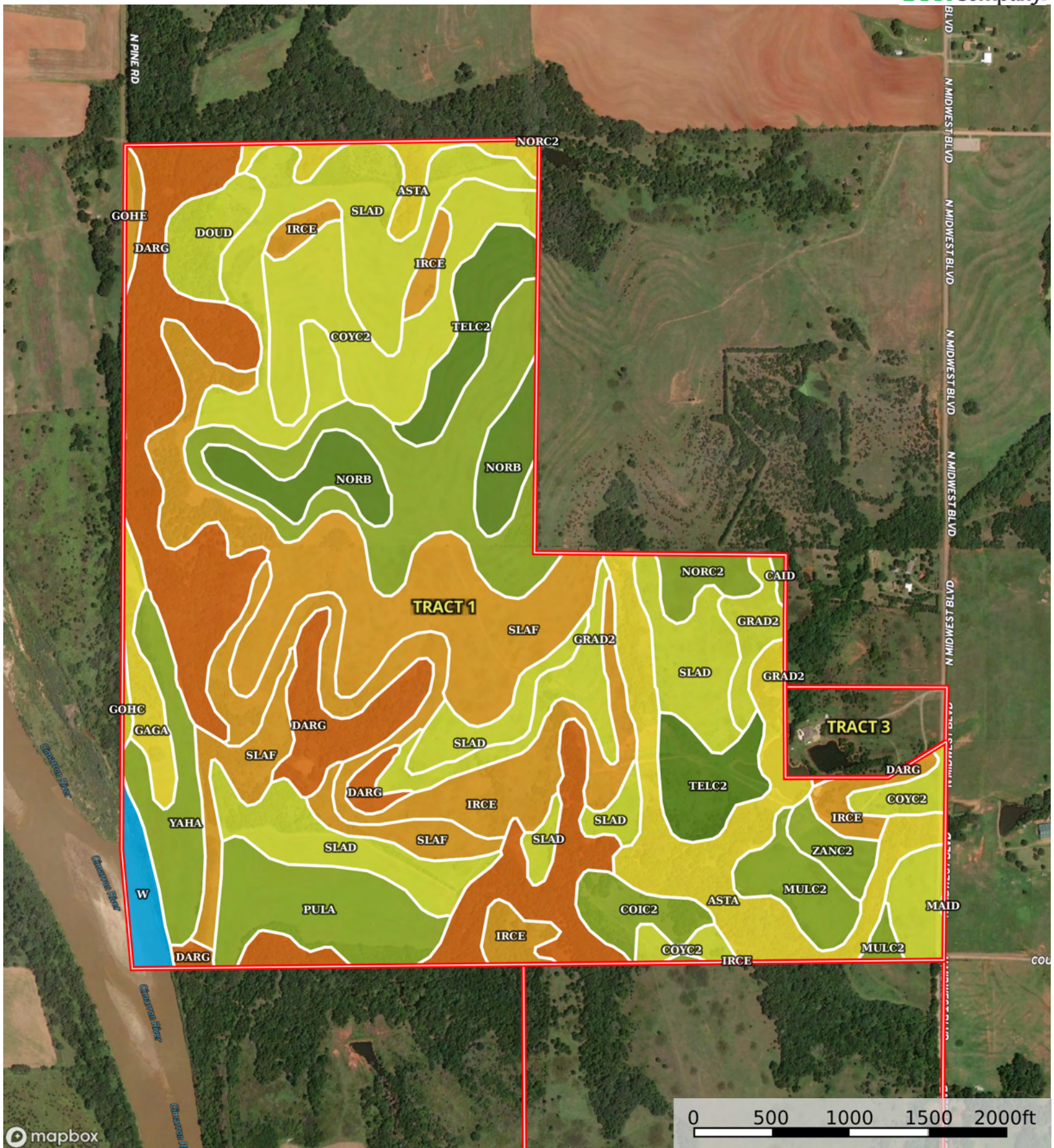


Boundary



mapbox

Boundary



Boundary

|  Boundary 447.16 ac

SOIL CODE	SOIL DESCRIPTION	ACRES	%	CPI	NCCPI	CAP
DaRG	Darnell-Rock outcrop complex, 8 to 45 percent slopes	64.56	14.44	0	11	7e
SlaD	Slaughterville fine sandy loam, 3 to 8 percent slopes	63.18	14.13	0	49	4e
SlaF	Slaughterville fine sandy loam, 8 to 20 percent slopes	57.13	12.78	0	43	6e
IrCE	Ironmound-Coyle complex, 5 to 15 percent slopes	39.39	8.81	0	34	6s
AstA	Ashport silt loam, 0 to 1 percent slopes, frequently flooded	35.66	7.97	0	63	5w
NorC2	Norge silt loam, 3 to 5 percent slopes, eroded	35.42	7.92	0	64	3e
CoyC2	Coyle loam, 3 to 5 percent slopes, eroded	28.95	6.47	0	33	4e
TelC2	Teller loam, 3 to 5 percent slopes, eroded	19.0	4.25	0	53	2e
GraD2	Grainola silty clay loam, 5 to 8 percent slopes, eroded	18.83	4.21	0	32	4e
PulA	Pulaski fine sandy loam, 0 to 1 percent slopes, occasionally flooded	17.9	4.0	0	50	3e
NorB	Norge silt loam, 1 to 3 percent slopes	14.36	3.21	0	70	2e
YahA	Yahola fine sandy loam, 0 to 1 percent slopes, occasionally flooded	12.54	2.8	0	51	3e
MulC2	Mulhall loam, 3 to 5 percent slopes, eroded	8.81	1.97	0	53	3e
DouD	Dougherty loamy fine sand, 3 to 8 percent slopes	7.02	1.57	0	41	4e
ColC2	Coyle-Ironmound complex, 3 to 5 percent slopes, eroded	6.19	1.38	0	35	3e
GaGA	Gaddy-Gracemore complex, 0 to 1 percent slopes, frequently flooded	5.89	1.32	0	22	5w
W	Water	5.06	1.13	0	-	8
ZanC2	Zaneis loam, 3 to 5 percent slopes, moderately eroded	4.23	0.95	0	57	3e
GohE	Goodnight loamy fine sand, 5 to 15 percent slopes	1.83	0.41	0	31	6e
GohC	Goodnight loamy fine sand, 1 to 5 percent slopes	0.65	0.15	0	33	4e
CAID	Coyle-Ashport frequently flooded-Ironmound complex, 1 to 8 percent slopes	0.51	0.11	0	45	3e
MaID	Masham-Ironmound complex, 5 to 15 percent slopes	0.05	0.01	0	23	6e
TOTALS		447.16(*)	100%	-	41.74	4.67









(\*) Total acres may differ in the second decimal compared to the sum of each acreage soil. This is due to a round error because we only show the acres of each soil with two decimal.

## Capability Legend

Increased Limitations and Hazards

Decreased Adaptability and Freedom of Choice Users

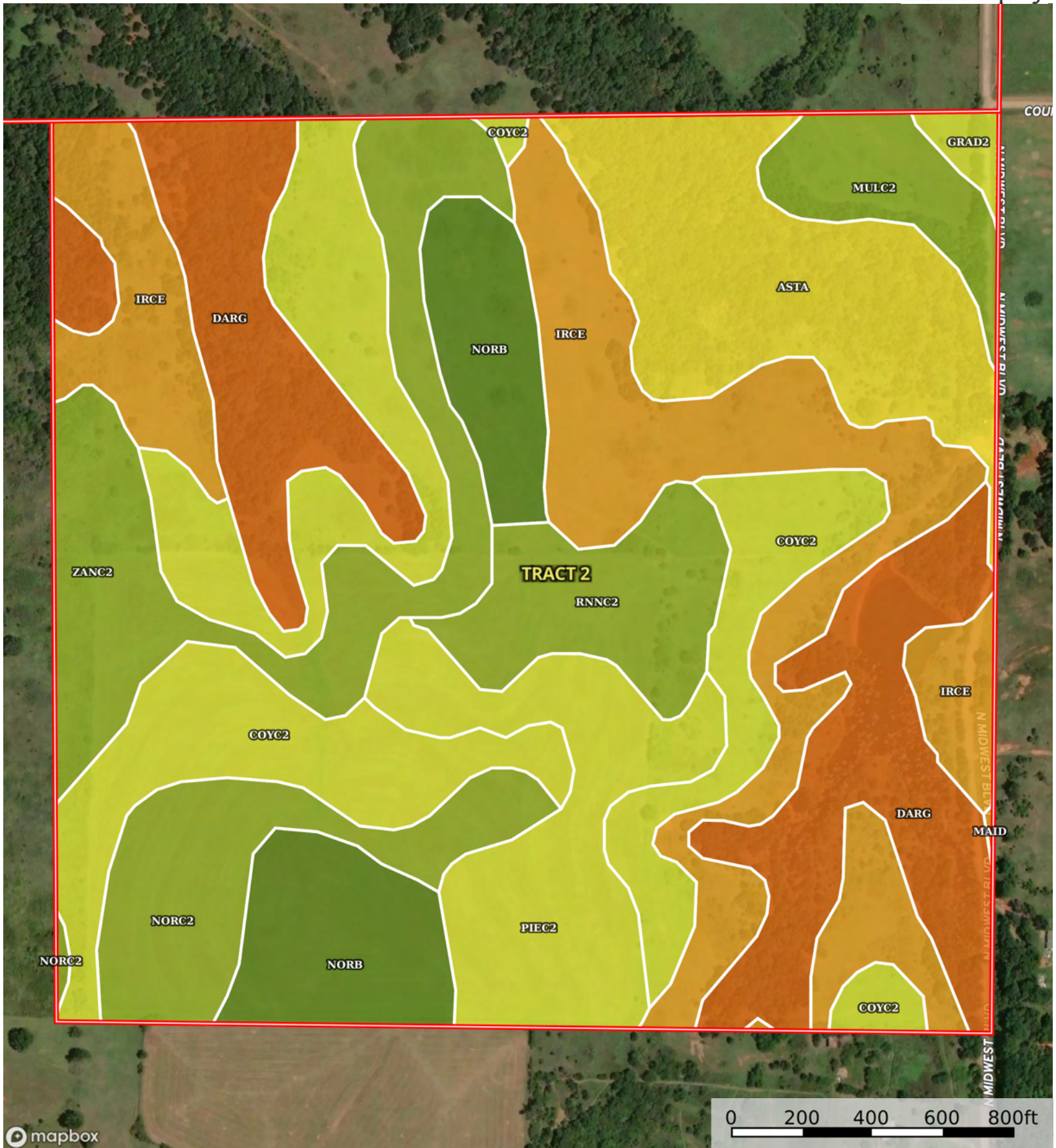
Land, Capability

								
	1	2	3	4	5	6	7	8
'Wild Life'	•	•	•	•	•	•	•	•
Forestry	•	•	•	•	•	•	•	
Limited	•	•	•	•	•	•	•	
Moderate	•	•	•	•	•	•		
Intense	•	•	•	•	•			
Limited	•	•	•	•				
Moderate	•	•	•					
Intense	•	•						
Very Intense	•							

### Grazing Cultivation

(c) climatic limitations (e) susceptibility to erosion

(s) soil limitations within the rooting zone (w) excess of water



 Boundary

|  Boundary 160.05 ac

SOIL CODE	SOIL DESCRIPTION	ACRES	%	CPI	NCCPI	CAP
IrCE	Ironmound-Coyle complex, 5 to 15 percent slopes	28.89	18.06	0	34	6s
CoyC2	Coyle loam, 3 to 5 percent slopes, eroded	28.51	17.82	0	33	4e
DaRG	Darnell-Rock outcrop complex, 8 to 45 percent slopes	24.92	15.57	0	11	7e
AstA	Ashport silt loam, 0 to 1 percent slopes, frequently flooded	15.94	9.96	0	63	5w
ZanC2	Zaneis loam, 3 to 5 percent slopes, moderately eroded	15.02	9.39	0	57	3e
PieC2	Piedmont silty clay loam, 3 to 5 percent slopes, eroded	12.56	7.85	0	29	4e
NorB	Norge silt loam, 1 to 3 percent slopes	12.15	7.59	0	70	2e
NorC2	Norge silt loam, 3 to 5 percent slopes, eroded	9.08	5.67	0	64	3e
RnnC2	Renthin silty clay loam, 3 to 5 percent slopes, eroded	7.42	4.64	0	43	3e
MulC2	Mulhall loam, 3 to 5 percent slopes, eroded	4.58	2.86	0	53	3e
GraD2	Grainola silty clay loam, 5 to 8 percent slopes, eroded	0.91	0.57	0	32	4e
MaID	Masham-Ironmound complex, 5 to 15 percent slopes	0.07	0.04	0	23	6e
TOTALS		160.0 5(*)	100%	-	40.28	4.55









(\*) Total acres may differ in the second decimal compared to the sum of each acreage soil. This is due to a round error because we only show the acres of each soil with two decimal.

## Capability Legend

Increased Limitations and Hazards

Decreased Adaptability and Freedom of Choice Users

Land, Capability

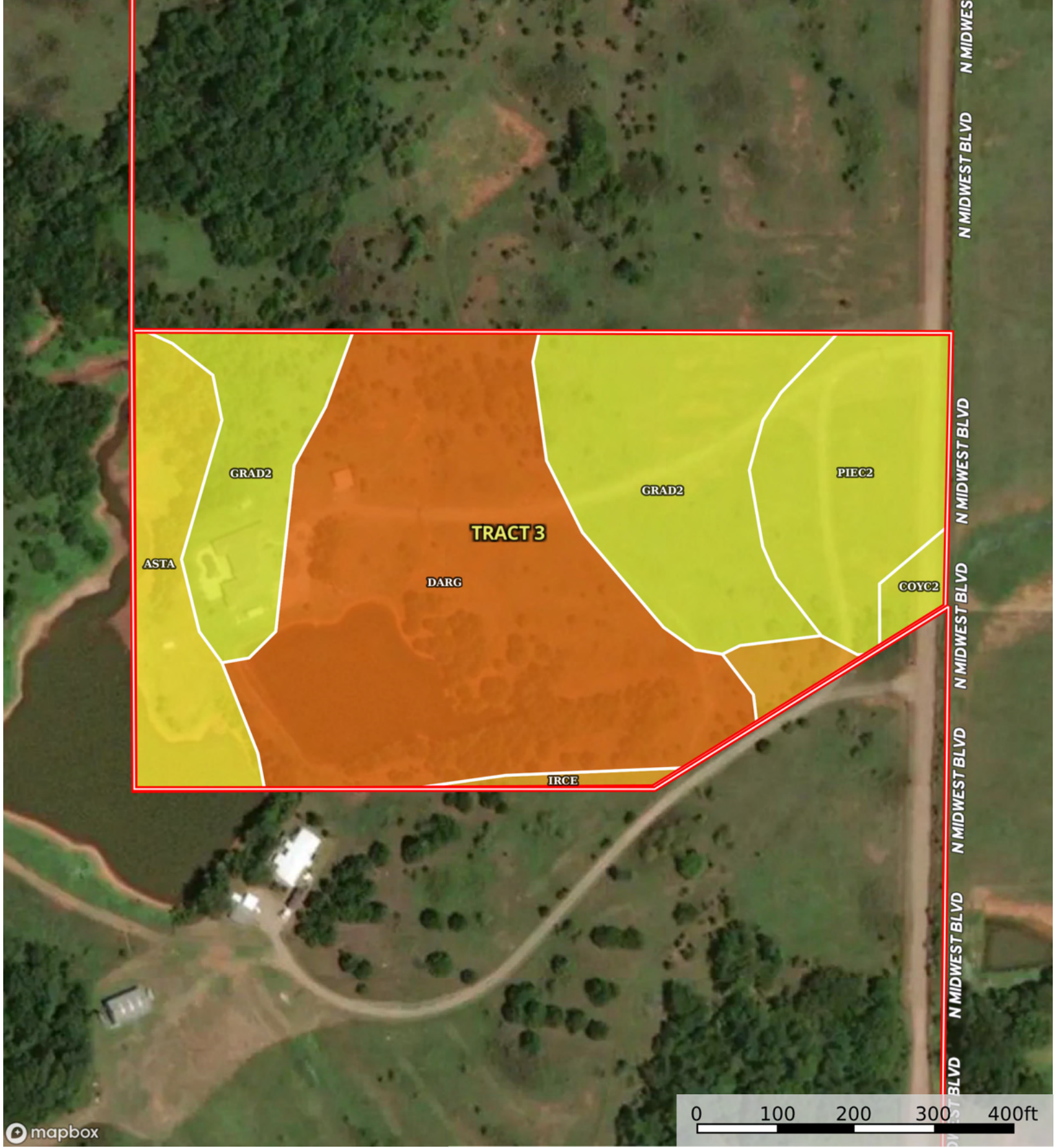
								
	1	2	3	4	5	6	7	8
'Wild Life'	•	•	•	•	•	•	•	•
Forestry	•	•	•	•	•	•	•	
Limited	•	•	•	•	•	•	•	
Moderate	•	•	•	•	•	•		
Intense	•	•	•	•	•			
Limited	•	•	•	•				
Moderate	•	•	•					
Intense	•	•						
Very Intense	•							

### Grazing Cultivation

(c) climatic limitations (e) susceptibility to erosion

(s) soil limitations within the rooting zone (w) excess of water





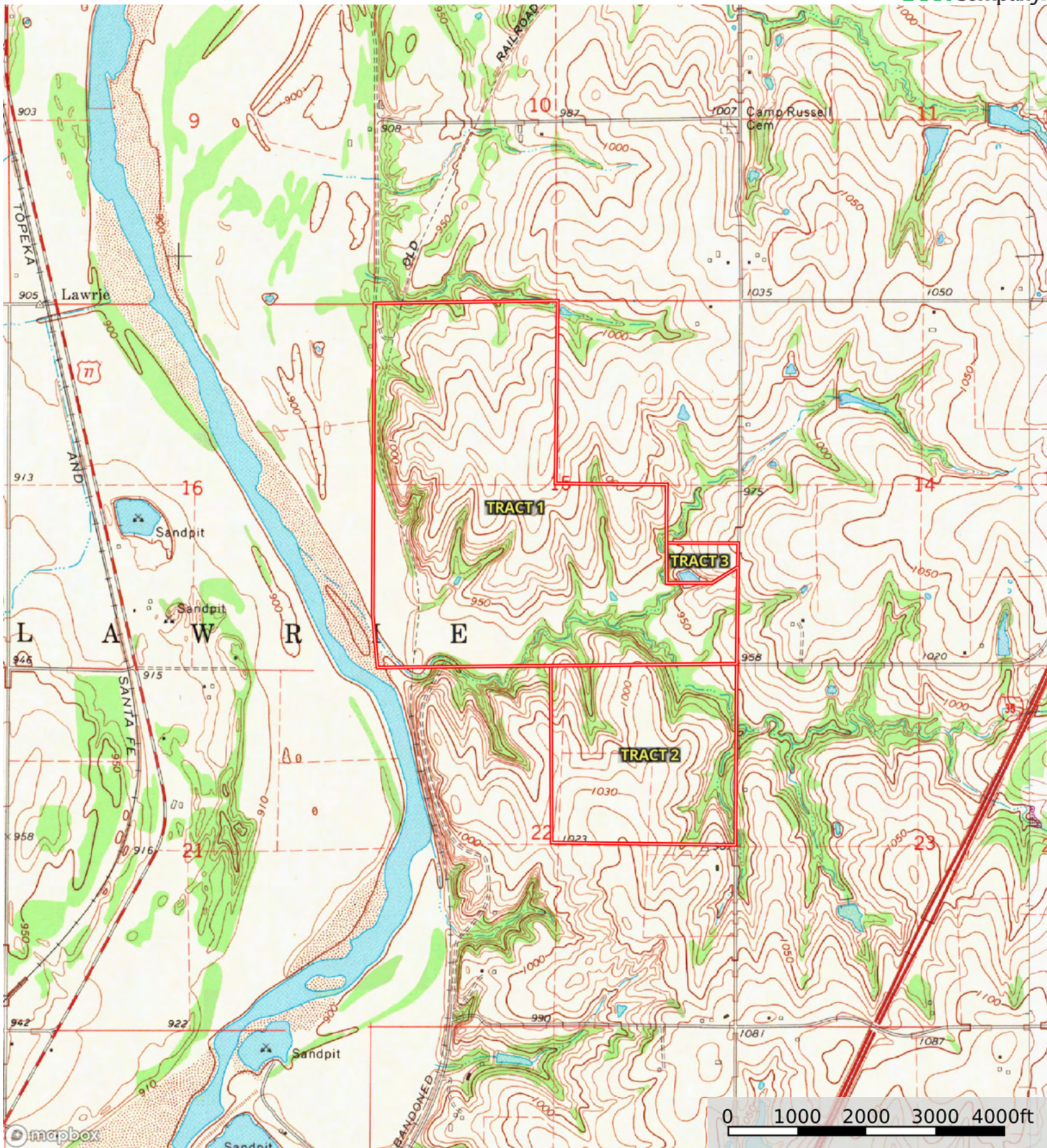
Boundary

Boundary 12.75 ac

SOIL CODE	SOIL DESCRIPTION	ACRES	%	CPI	NCCPI	CAP
DaRG	Darnell-Rock outcrop complex, 8 to 45 percent slopes	5.61	44	0	11	7e
GraD2	Grainola silty clay loam, 5 to 8 percent slopes, eroded	3.54	27.76	0	32	4e
PieC2	Piedmont silty clay loam, 3 to 5 percent slopes, eroded	1.74	13.65	0	29	4e
AstA	Ashport silt loam, 0 to 1 percent slopes, frequently flooded	1.34	10.51	0	63	5w
IrCE	Ironmound-Coyle complex, 5 to 15 percent slopes	0.35	2.75	0	34	6s
CoyC2	Coyle loam, 3 to 5 percent slopes, eroded	0.17	1.33	0	33	4e
TOTALS		12.75(*)	100%	-	25.68	5.48

(\*) Total acres may differ in the second decimal compared to the sum of each acreage soil. This is due to a round error because we only show the acres of each soil with two decimal.





 Boundary