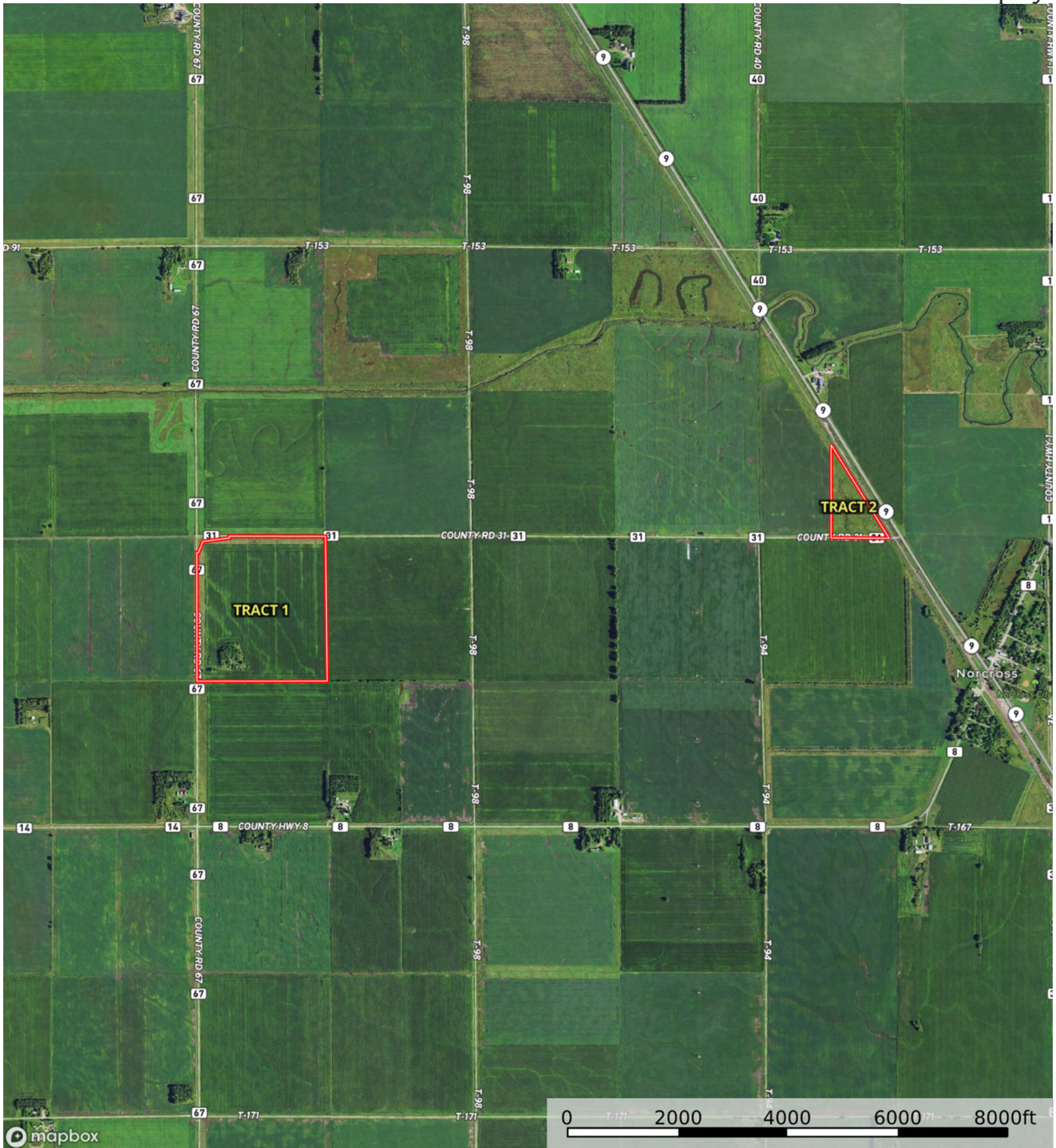



 Boundary



mapbox

 Boundary

L-2500188

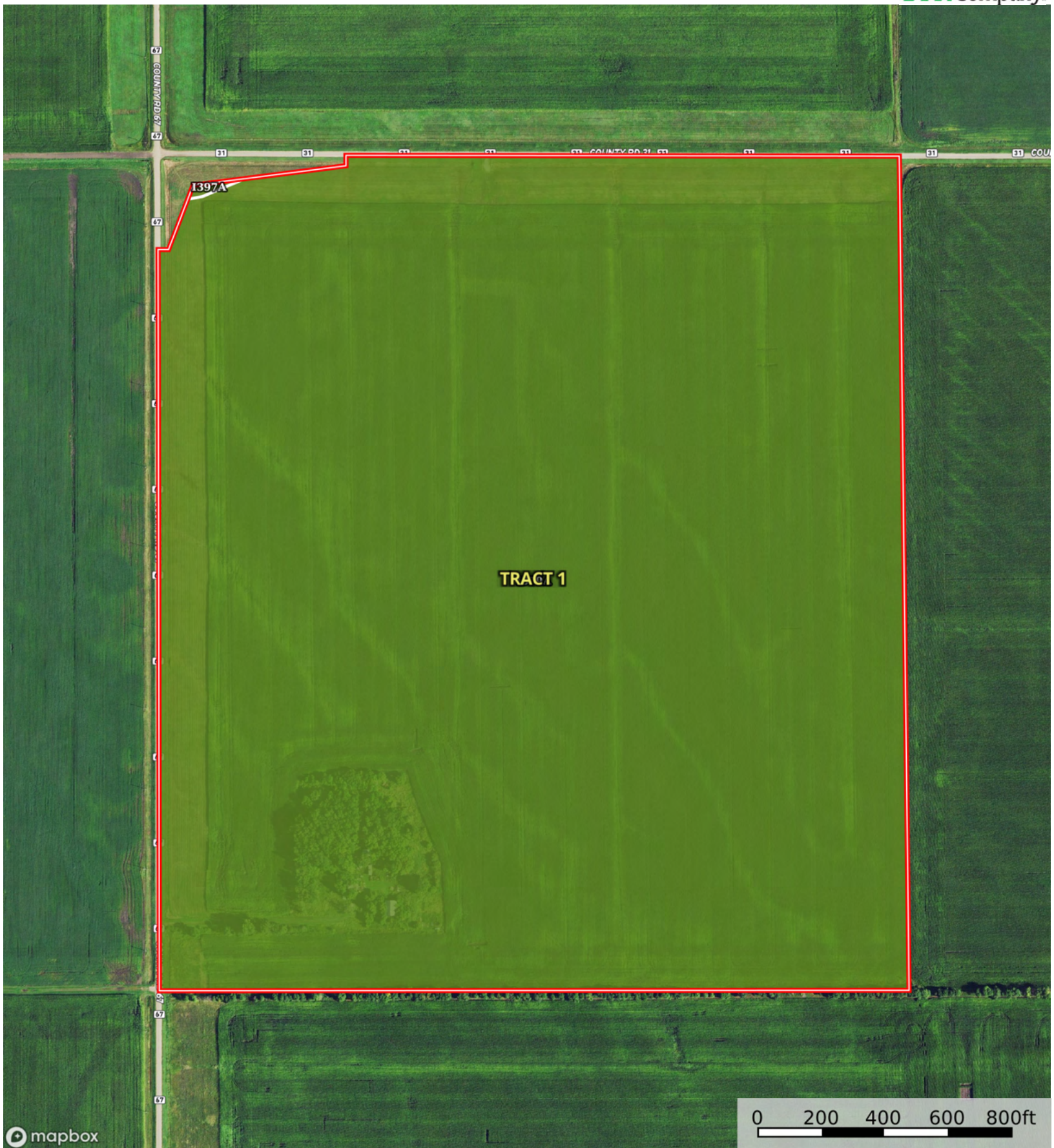
Grant County, Minnesota, 161.09 AC +/-



Boundary

L-2500188

Grant County, Minnesota, 161.09 AC +/-



Boundary

0 200 400 600 800ft

|  Boundary 142.21 ac

SOIL CODE	SOIL DESCRIPTION	ACRES	%	CPI	NCCPI	CAP
I379A	Doran-Mustinka silty clay loams, 0 to 2 percent slopes	142.1 1	99.93	92	60	2c
I397A	Antler-Mustinka complex, 0 to 2 percent slopes	0.1	0.07	88	60	2e
TOTALS		142.2 1(*)	100%	92.0	60.0	2.0









(*) Total acres may differ in the second decimal compared to the sum of each acreage soil. This is due to a round error because we only show the acres of each soil with two decimal.

Capability Legend

Increased Limitations and Hazards

Decreased Adaptability and Freedom of Choice Users

Land, Capability

								
	1	2	3	4	5	6	7	8
'Wild Life'	•	•	•	•	•	•	•	•
Forestry	•	•	•	•	•	•	•	
Limited	•	•	•	•	•	•	•	
Moderate	•	•	•	•	•	•		
Intense	•	•	•	•	•			
Limited	•	•	•	•				
Moderate	•	•	•					
Intense	•	•						
Very Intense	•							

Grazing Cultivation

(c) climatic limitations (e) susceptibility to erosion

(s) soil limitations within the rooting zone (w) excess of water

L-2500188

Grant County, Minnesota, 161.09 AC +/-



mapbox



Boundary



The information contained herein was obtained from sources deemed to be reliable. Land id™ Services makes no warranties or guarantees as to the completeness or accuracy thereof.

L-2500188

Grant County, Minnesota, 161.09 AC +/-



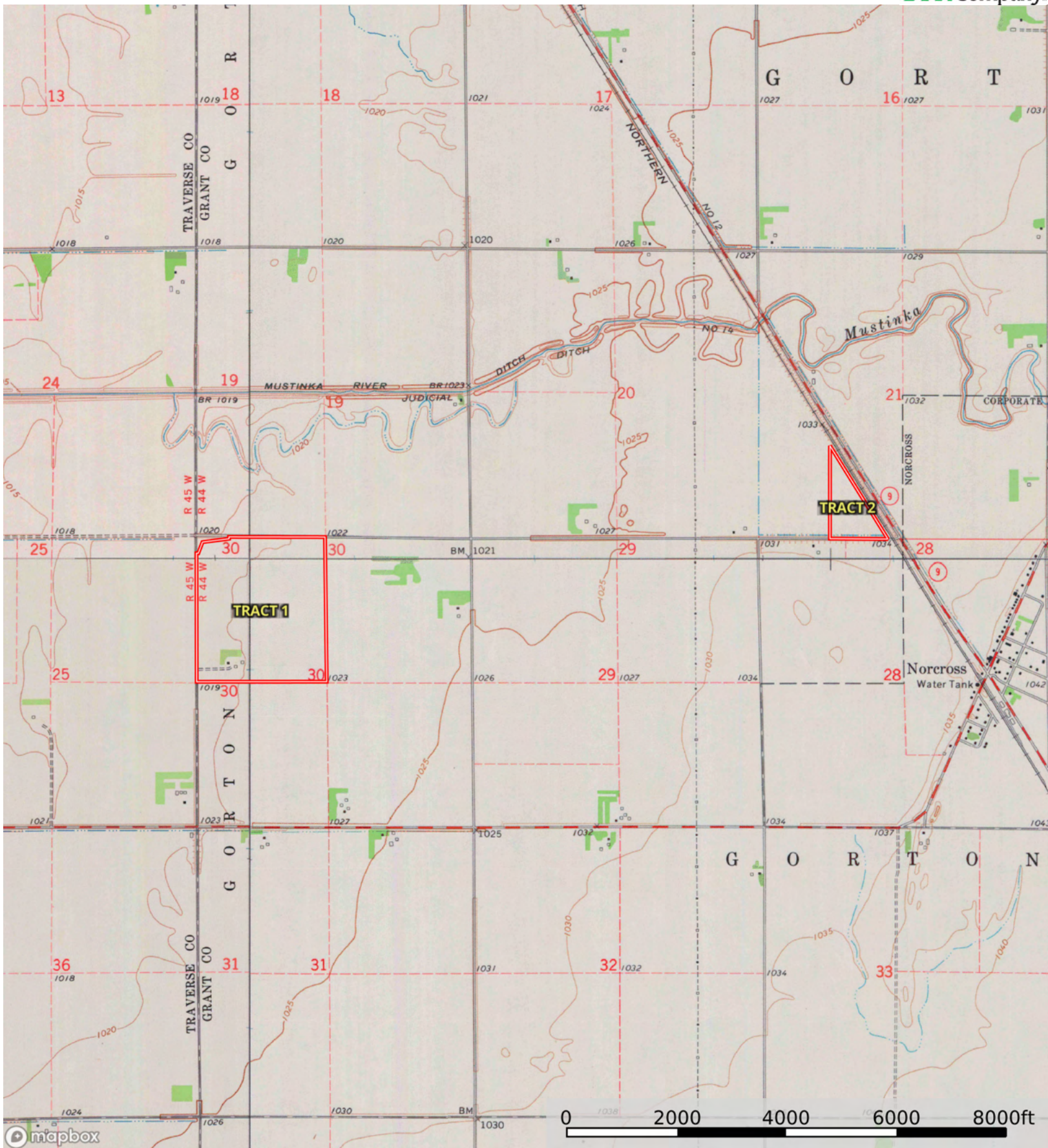
Boundary

Boundary 20.64 ac

SOIL CODE	SOIL DESCRIPTION	ACRES	%	CPI	NCCPI	CAP
1379A	Doran-Mustinka silty clay loams, 0 to 2 percent slopes	20.64	100	92	60	2c
TOTALS		20.64(*)	100%	92.0	60.0	2

(*) Total acres may differ in the second decimal compared to the sum of each acreage soil. This is due to a round error because we only show the acres of each soil with two decimal.





Boundary