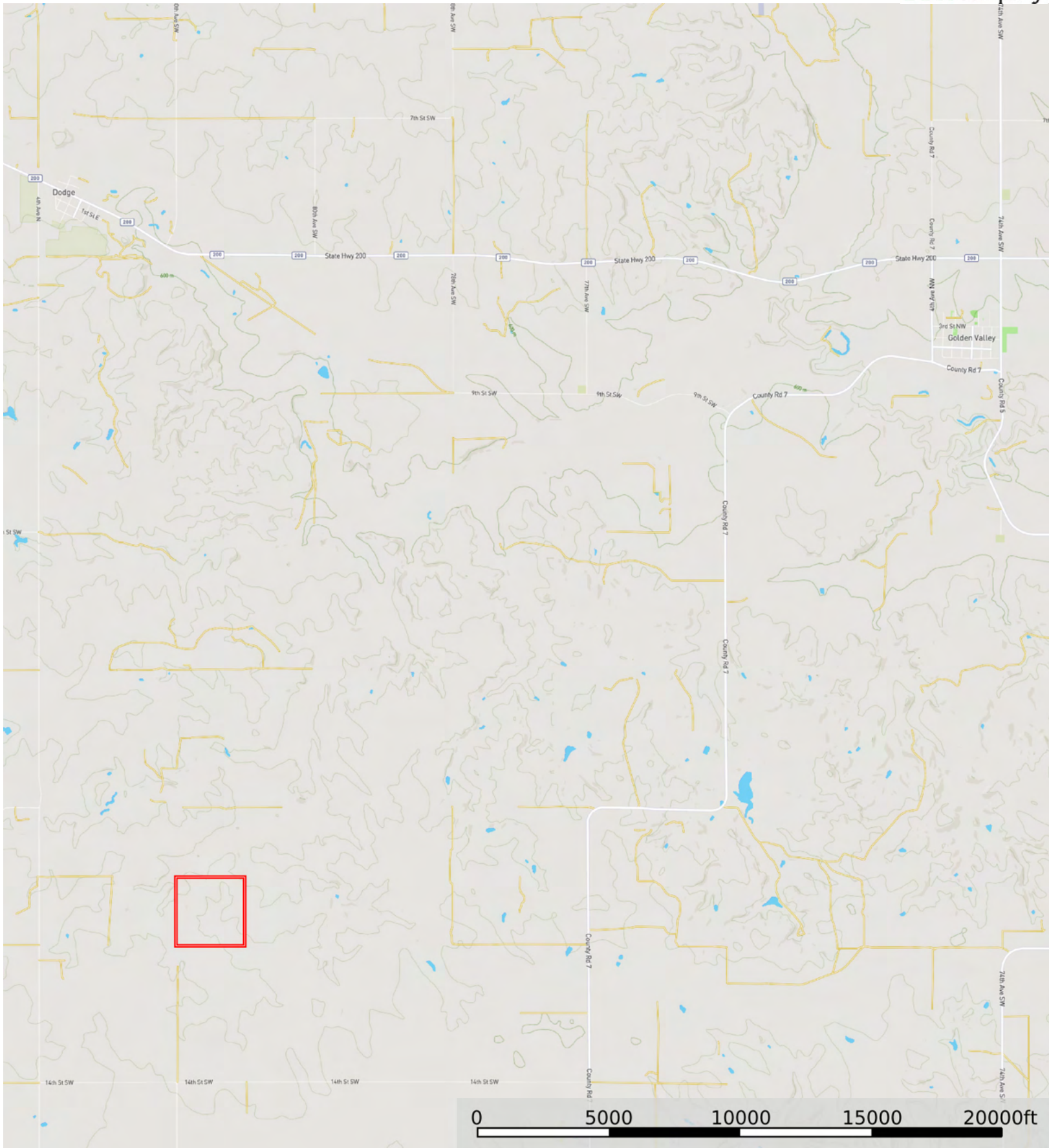


L-2500200

Dunn County, North Dakota, 160 AC +/-

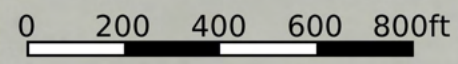
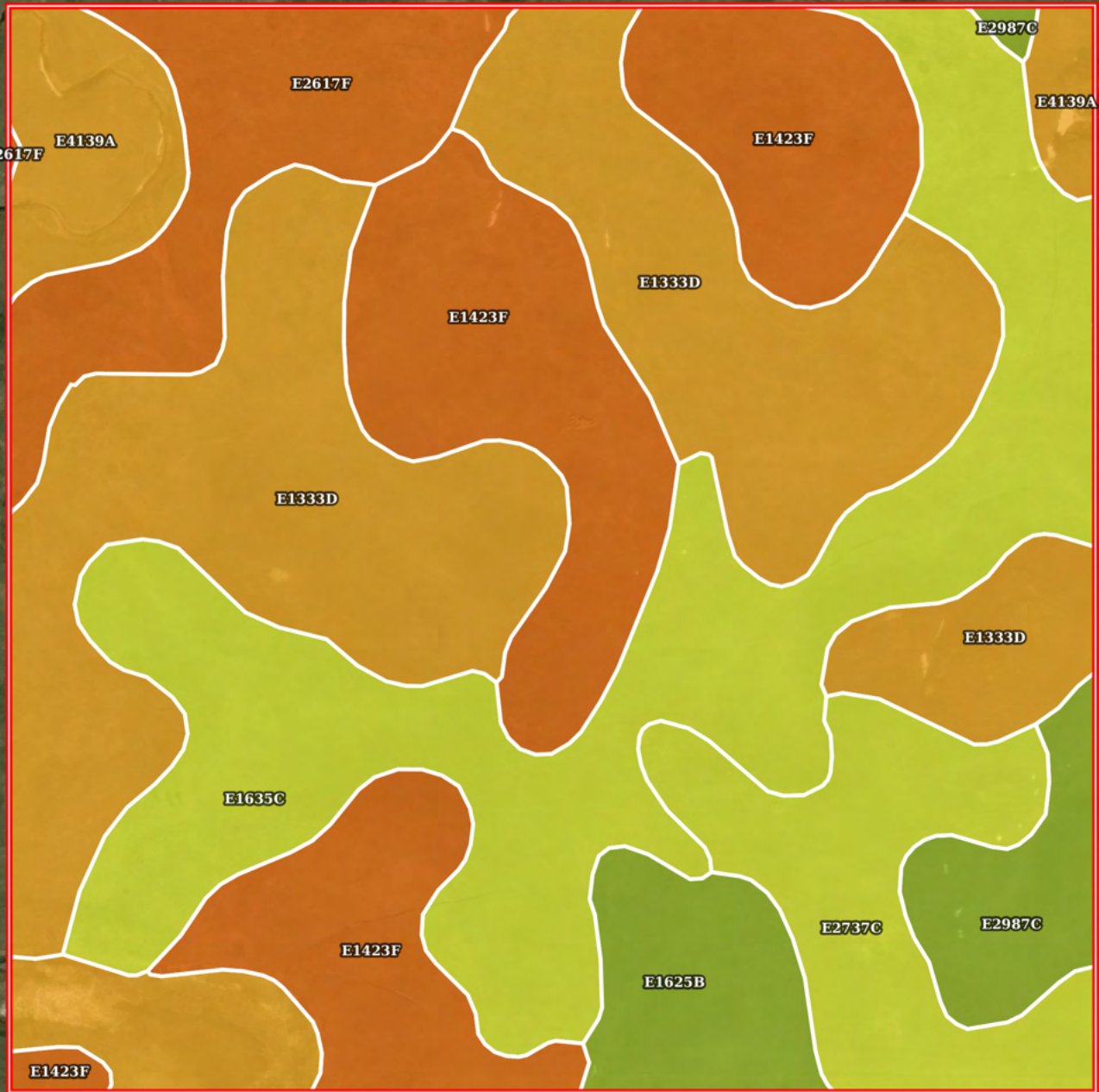



 Boundary



0 200 400 600 800ft

 Boundary



 Boundary

Boundary 158.65 ac

SOIL CODE	SOIL DESCRIPTION	ACRES	%	CPI	NCCPI	CAP
E1333D	Vebar-Cohagen fine sandy loams, 9 to 15 percent slopes	45.75	28.83	32	23	6e
E1635C	Vebar-Tally fine sandy loams, 6 to 9 percent slopes	35.57	22.42	52	36	4e
E1423F	Flasher-Vebar-Parshall complex, 9 to 35 percent slopes	31.09	19.59	22	15	7e
E2737C	Chama-Cabba-Sen silt loams, 6 to 9 percent slopes	11.73	7.39	54	28	4e
E2617F	Cabba-Chama-Shambo loams, 9 to 50 percent slopes	11.59	7.3	28	15	7e
E4139A	Korchea-Fluvaquents complex, channeled, 0 to 2 percent slopes, frequently flooded	11.4	7.18	44	15	6w
E1625B	Vebar-Parshall fine sandy loams, 3 to 6 percent slopes	6.23	3.93	63	31	3e
E2987C	Sen-Chama silt loams, 6 to 9 percent slopes	5.29	3.33	61	31	3e
TOTALS		158.6 5(*)	100%	38.9	24.13	5.45

(*) Total acres may differ in the second decimal compared to the sum of each acreage soil. This is due to a round error because we only show the acres of each soil with two decimal.

Capability Legend

Increased Limitations and Hazards

Decreased Adaptability and Freedom of Choice Users

Land, Capability

	1	2	3	4	5	6	7	8
'Wild Life'	•	•	•	•	•	•	•	•
Forestry	•	•	•	•	•	•	•	
Limited	•	•	•	•	•	•	•	
Moderate	•	•	•	•	•	•		
Intense	•	•	•	•	•			
Limited	•	•	•	•				
Moderate	•	•	•					
Intense	•	•						
Very Intense	•							

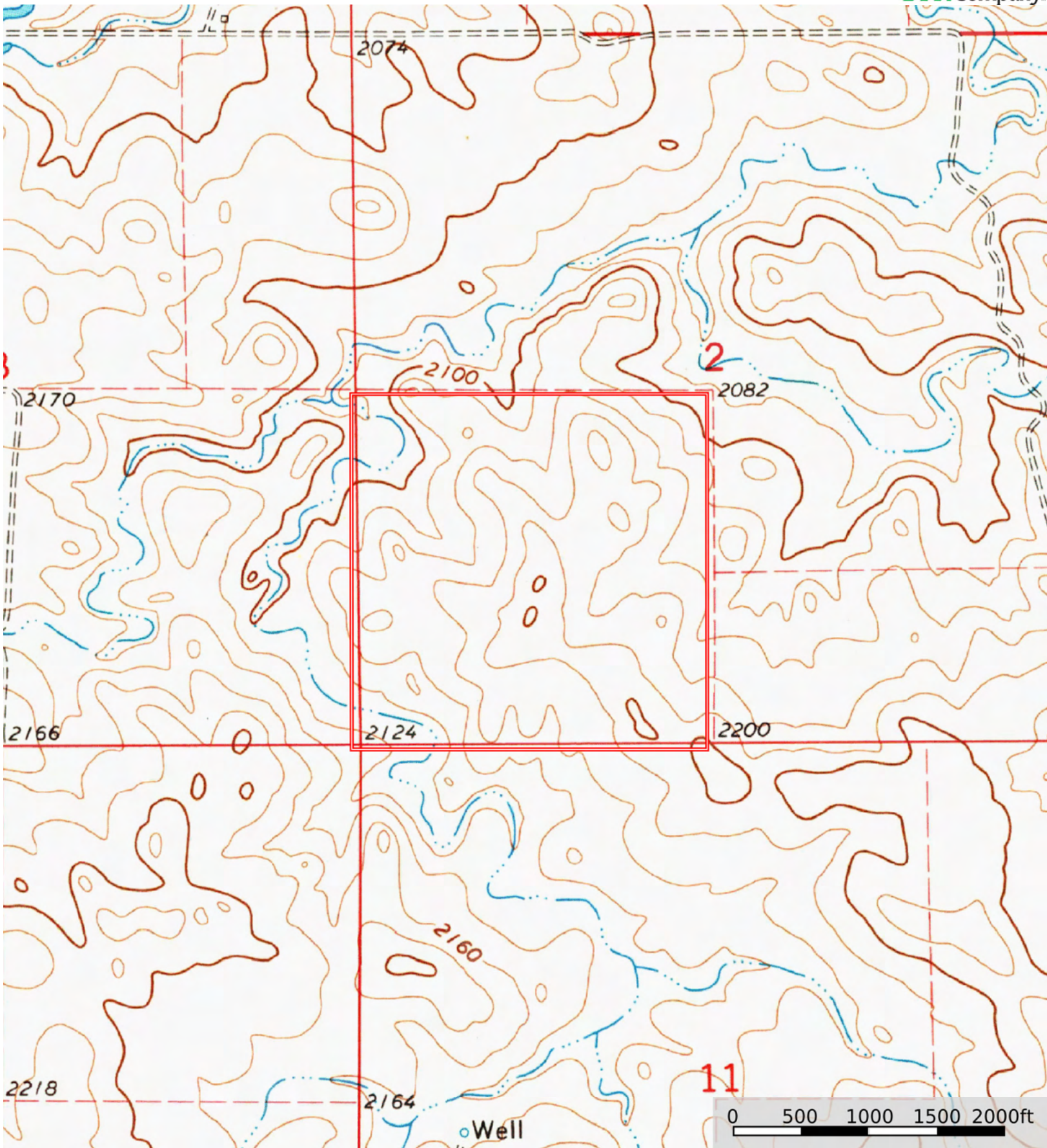
Grazing Cultivation

(c) climatic limitations (e) susceptibility to erosion

(s) soil limitations within the rooting zone (w) excess of water

L-2500200

Dunn County, North Dakota, 160 AC +/-



Boundary



The information contained herein was obtained from sources deemed to be reliable. Land id™ Services makes no warranties or guarantees as to the completeness or accuracy thereof.