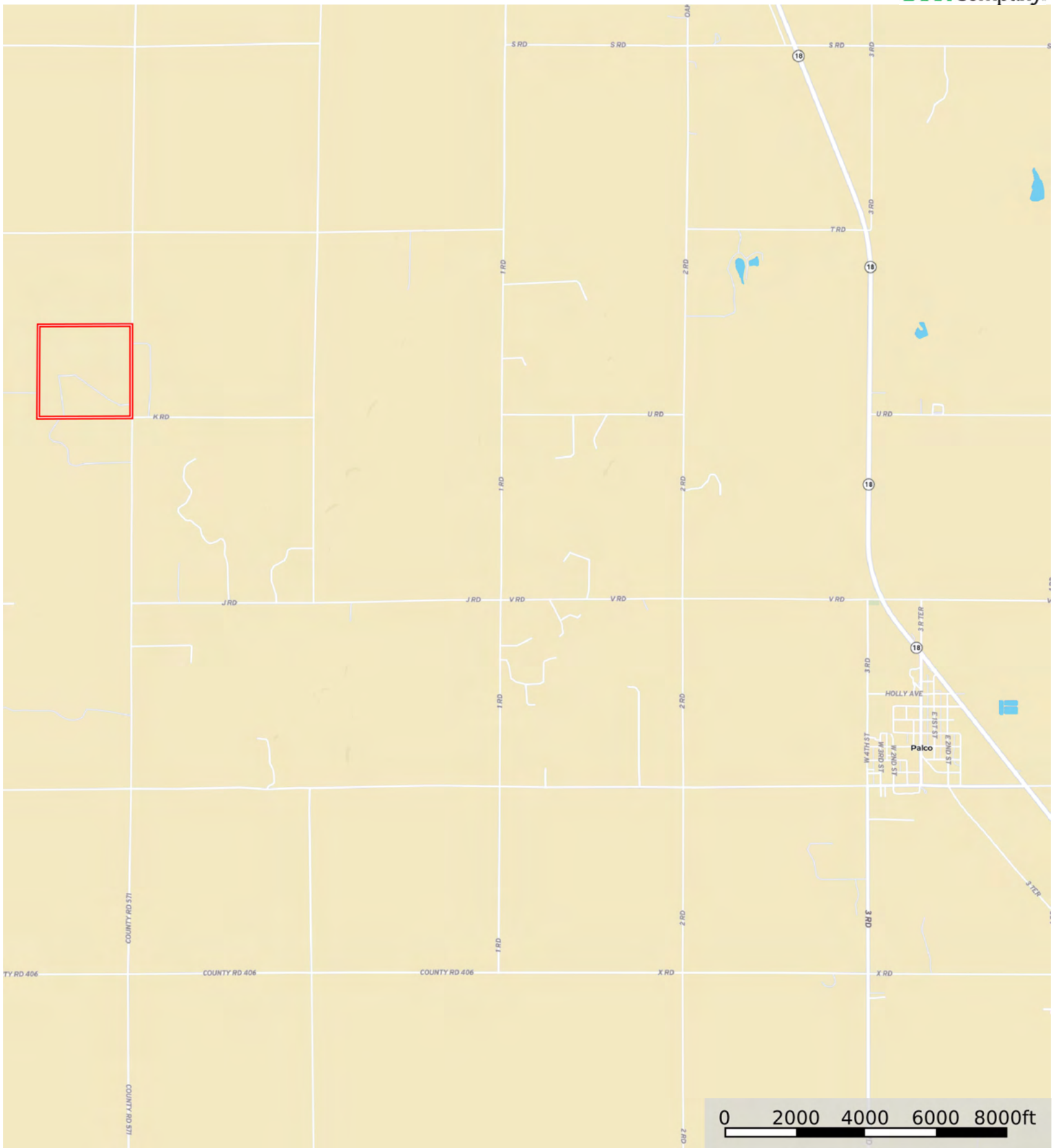


L-2500201

Graham County, Kansas, 160.17 AC +/-



 Boundary

L-2500201

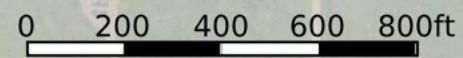
Graham County, Kansas, 160.17 AC +/-



KIRD

0 200 400 600 800ft

 Boundary



 Boundary



Boundary 159.85 ac

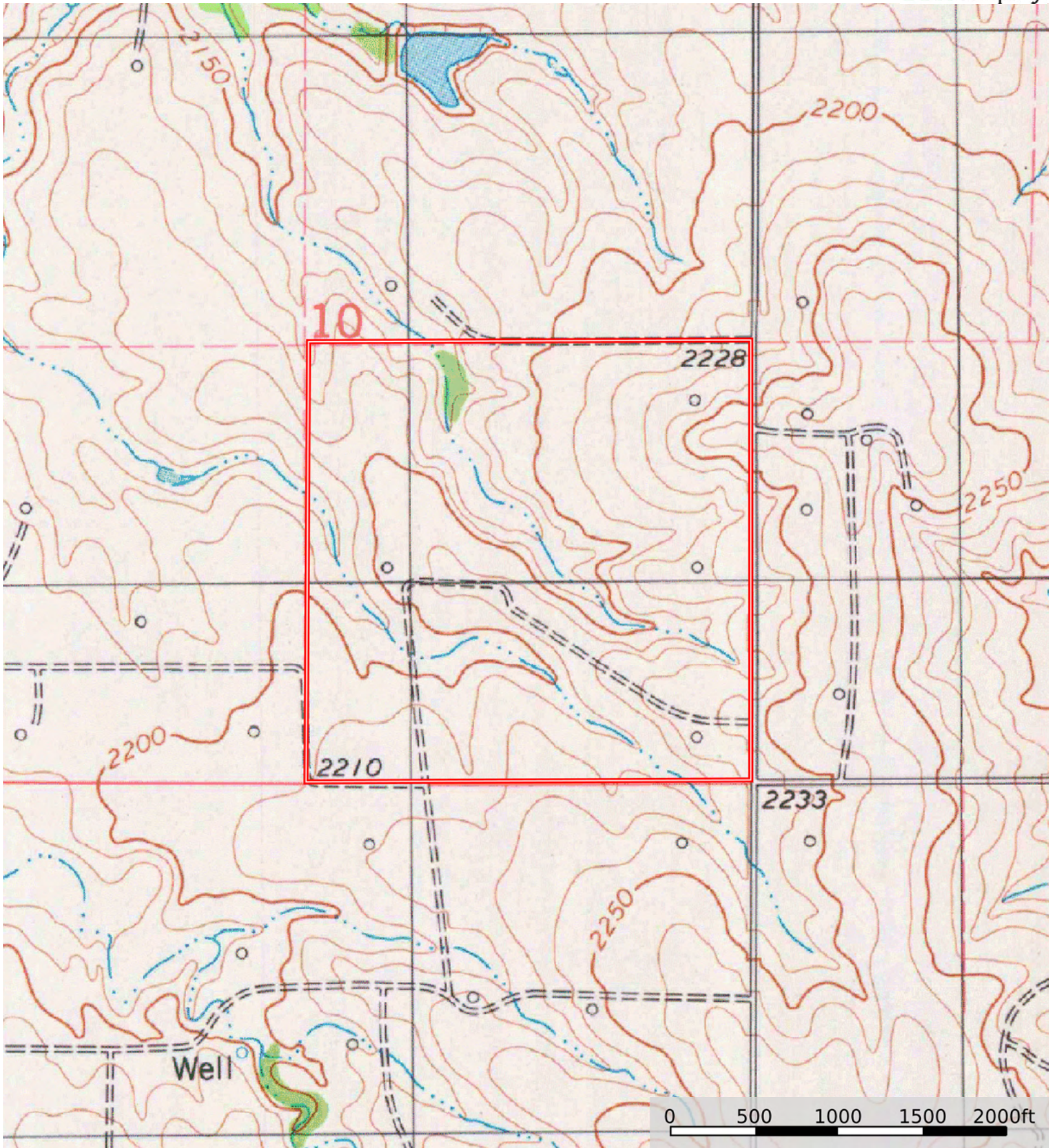
SOIL CODE	SOIL DESCRIPTION	ACRES	%	CPI	NCCPI	CAP
2748	Penden clay loam, 3 to 7 percent slopes, eroded	43.51	27.21	0	56	3e
2949	Wakeen-Nibson complex, 5 to 20 percent slopes	35.12	21.97	0	34	6e
2817	Uly silt loam, 3 to 6 percent slopes	32.75	20.48	0	76	3e
2960	Wakeen-Nibson silt loams, 3 to 7 percent slopes	18.54	11.6	0	41	4e
2674	Holdrege silt loam, 1 to 3 percent slopes, plains and breaks	12.24	7.66	0	76	2e
2519	Armo loam, 3 to 7 percent slopes	8.94	5.59	0	57	3e
2605	Eltree silt loam, 1 to 3 percent slopes	7.06	4.42	0	76	2e
2562	Campus-Canlon complex, 3 to 30 percent slopes	1.69	1.06	0	34	6e
TOTALS		159.85(*)	100%	-	55.75	3.69

(*) Total acres may differ in the second decimal compared to the sum of each acreage soil. This is due to a round error because we only show the acres of each soil with two decimal.



L-2500201

Graham County, Kansas, 160.17 AC +/-



 Boundary