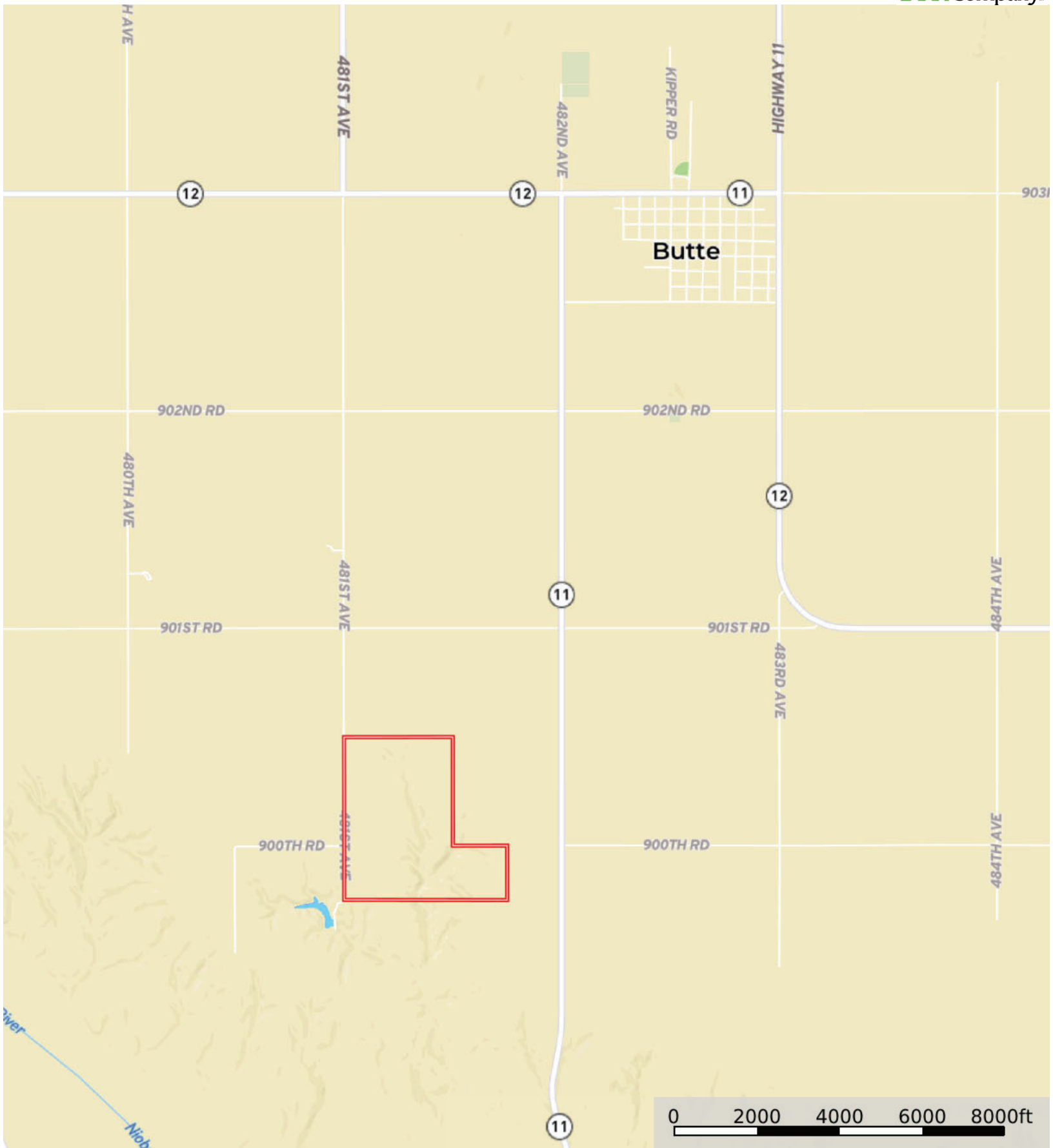
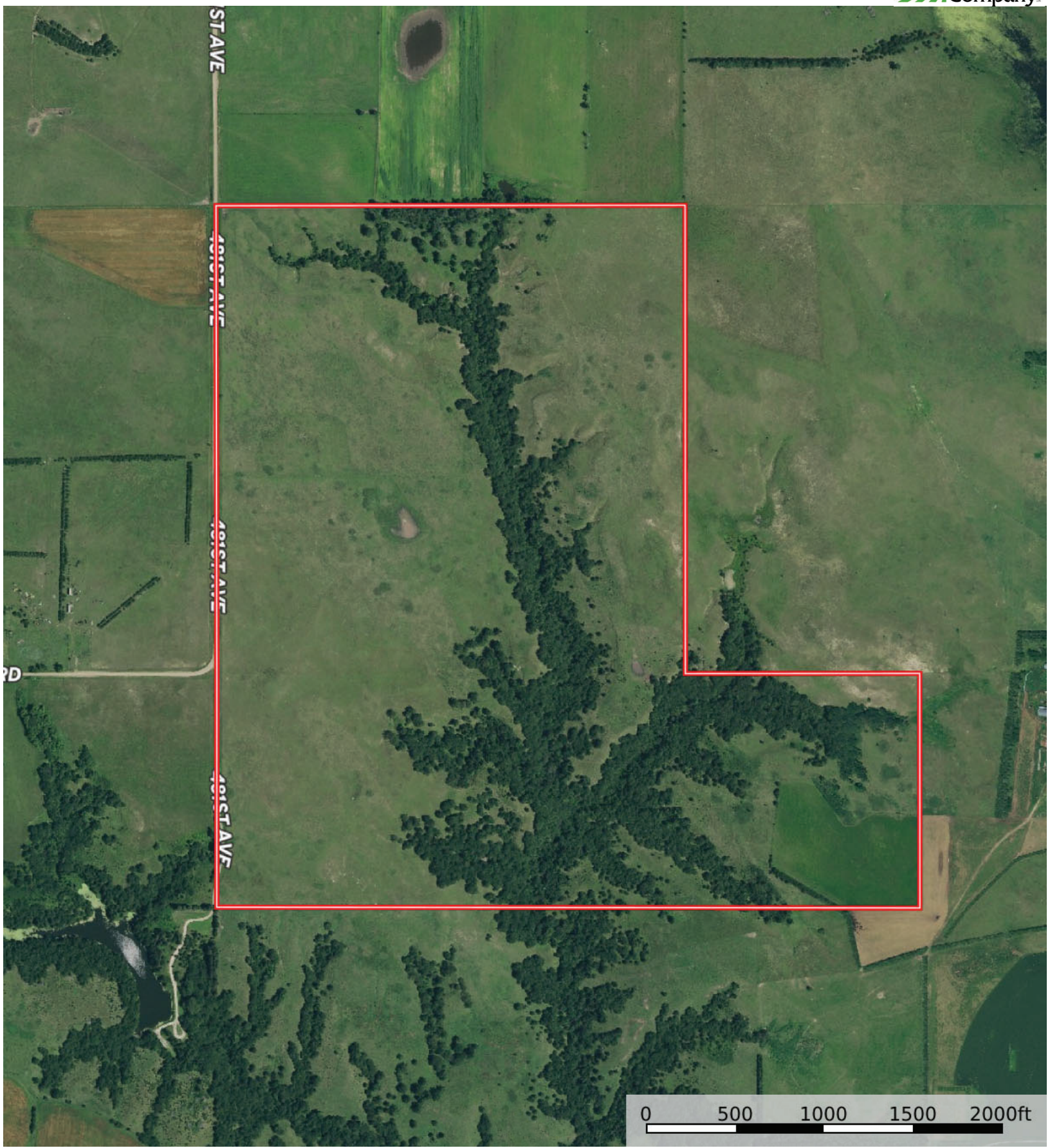


L-2500204

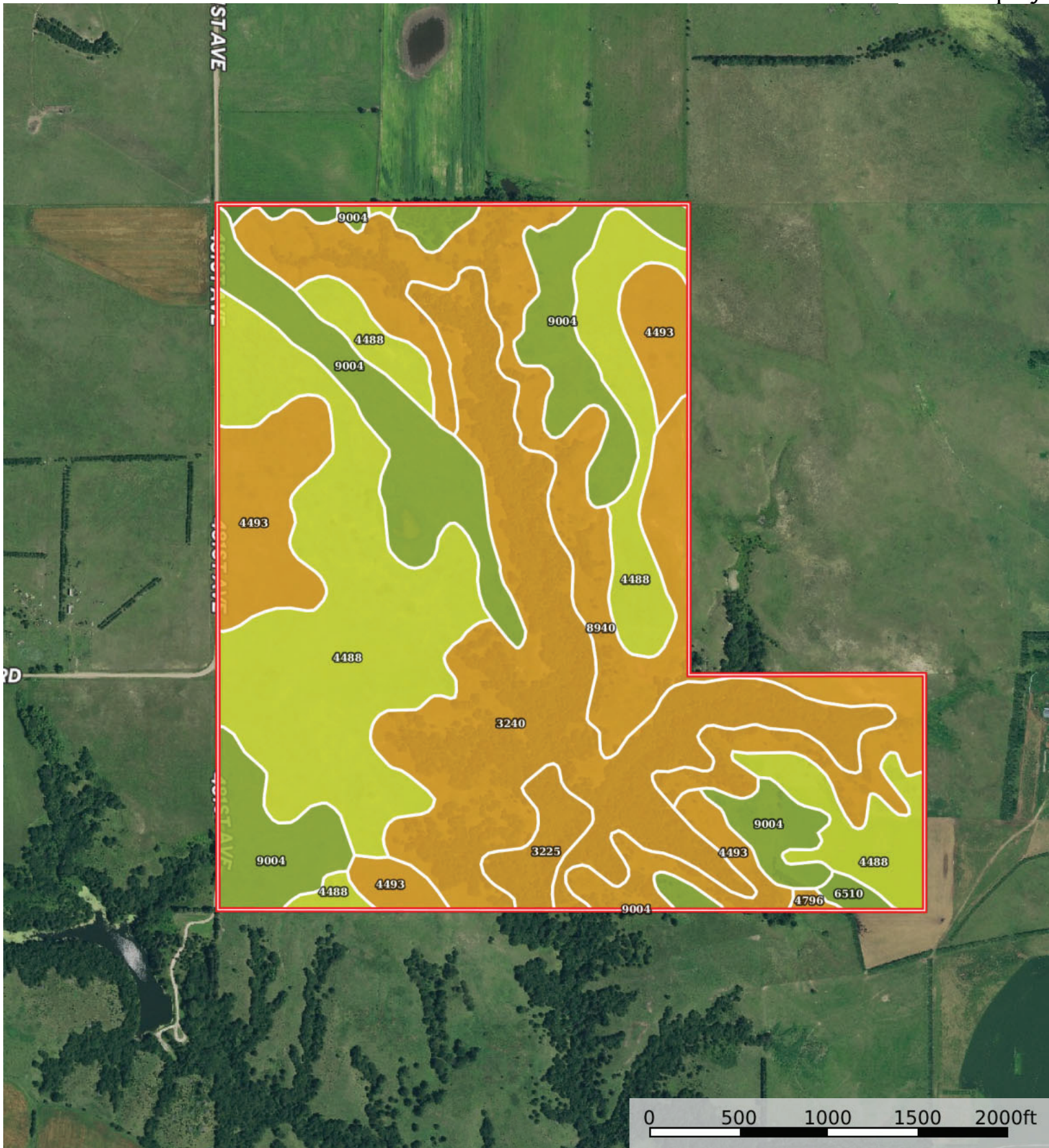
Boyd County, Nebraska, 279.46 AC +/-



 Boundary



 Boundary



 Boundary

Boundary 279.47 ac

SOIL CODE	SOIL DESCRIPTION	ACRES	%	CPI	NCCPI	CAP
4488	Dunday loamy fine sand, 3 to 6 percent slopes	79.97	28.61	0	36	4e
3240	Mariaville-Paka loams, 11 to 40 percent slopes	62.73	22.45	0	10	6s
8940	Simeon-Valentine complex, 3 to 30 percent slopes, eroded	49.91	17.86	0	23	6s
9004	Anselmo fine sandy loam, 3 to 6 percent slopes	49.19	17.6	54	40	3e
4493	Dunday loamy fine sand, 6 to 11 percent slopes	29.52	10.56	0	35	6e
3225	Labu-Sansarc silty clays, 9 to 35 percent slopes	5.36	1.92	33	25	6e
6510	Blendon fine sandy loam, 2 to 6 percent slopes	1.24	0.44	0	49	3e
5220	Onita silt loam, 0 to 2 percent slopes	0.99	0.35	94	60	2c
4796	Valentine fine sand, 9 to 25 percent slopes	0.56	0.2	14	23	6e
TOTALS		279.47(*)	100%	10.5	28.35	4.87

(*) Total acres may differ in the second decimal compared to the sum of each acreage soil. This is due to a round error because we only show the acres of each soil with two decimal.

Capability Legend

Increased Limitations and Hazards

Decreased Adaptability and Freedom of Choice Users

Land, Capability

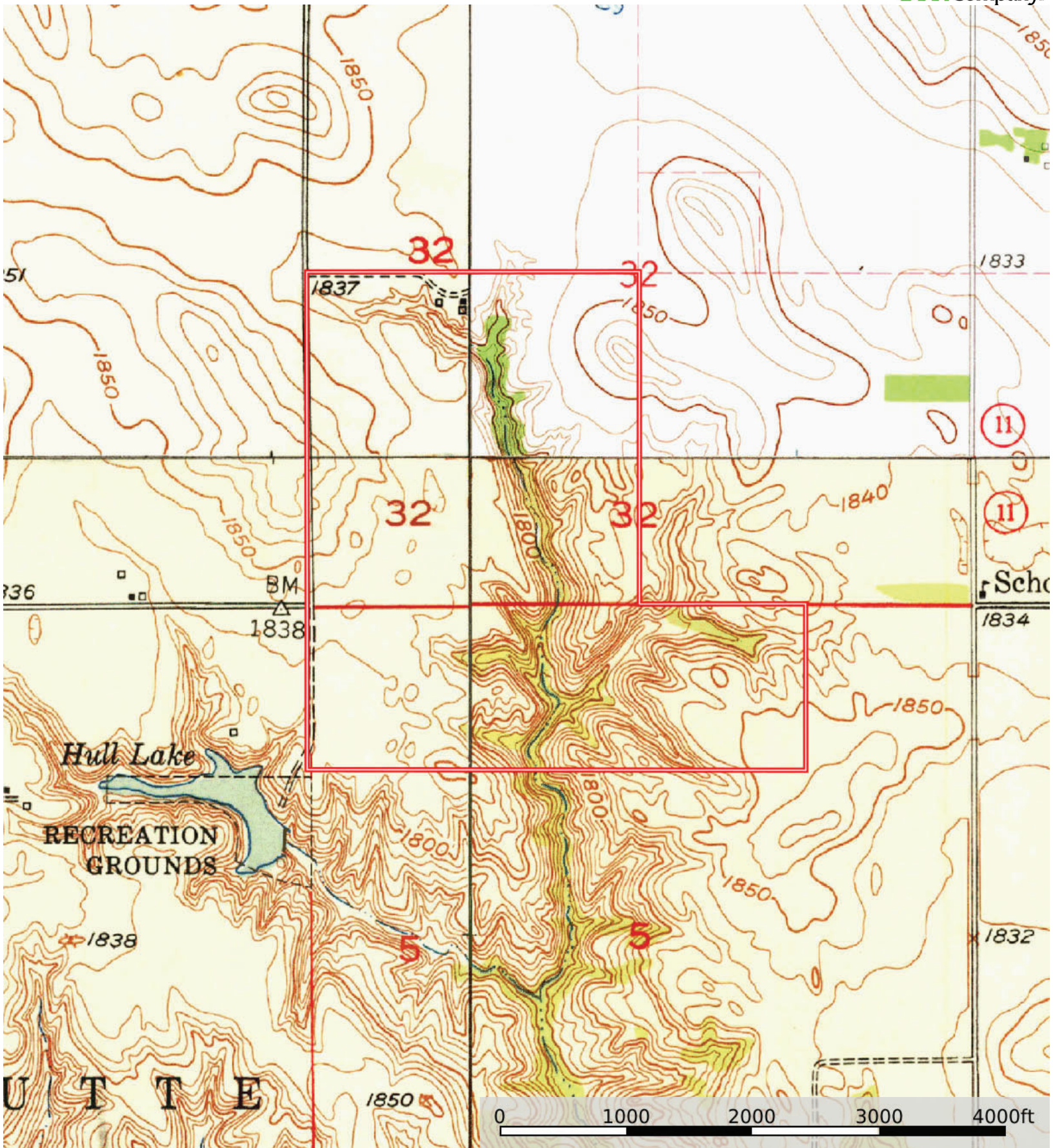


'Wild Life'	•	•	•	•	•	•	•
Forestry	•	•	•	•	•	•	
Limited	•	•	•	•	•	•	
Moderate	•	•	•	•	•		
Intense	•	•	•	•			
Limited	•	•	•				
Moderate	•	•					
Intense	•						
Very Intense	•						

Grazing Cultivation

(c) climatic limitations (e) susceptibility to erosion

(s) soil limitations within the rooting zone (w) excess of water



 Boundary