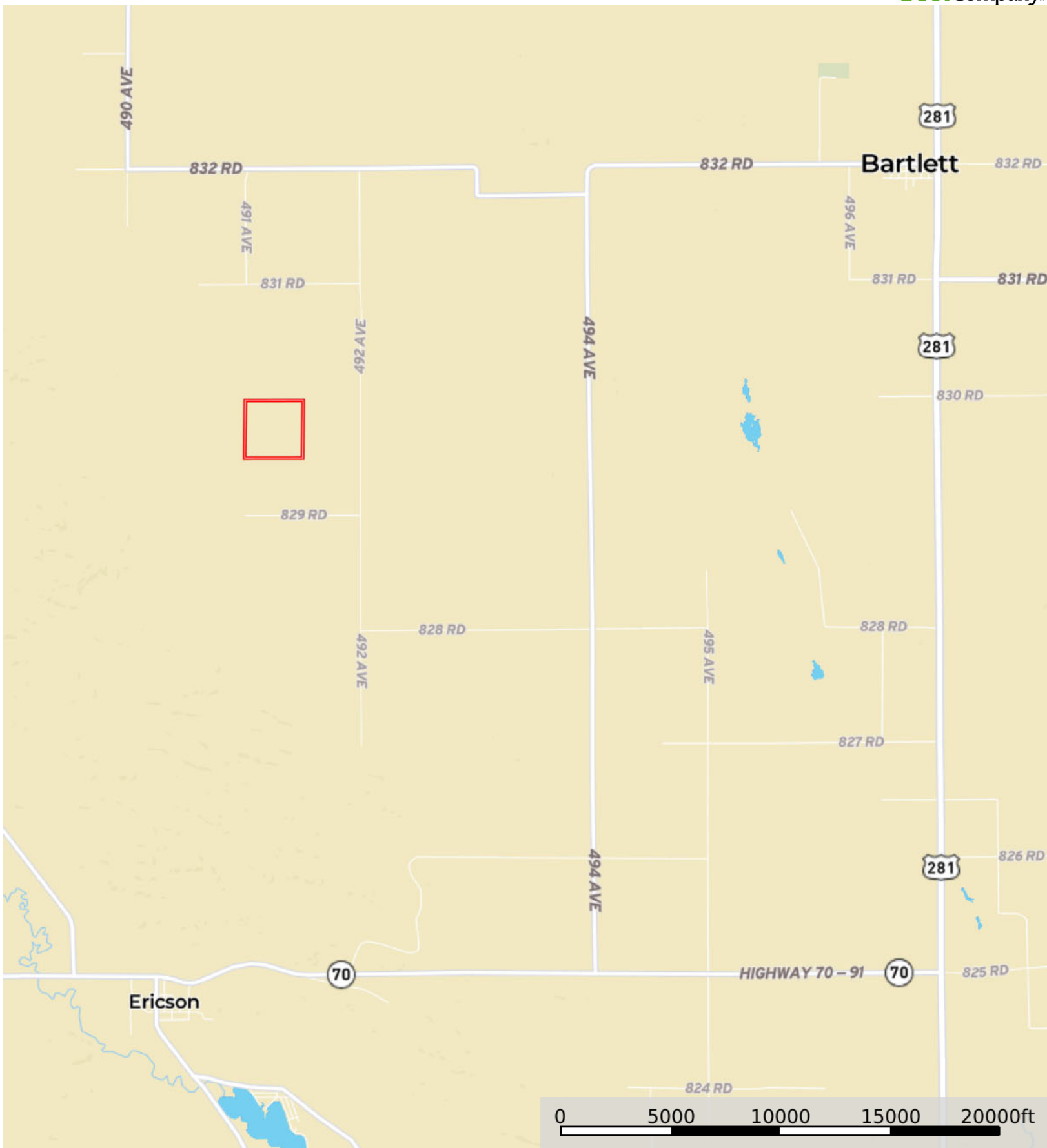
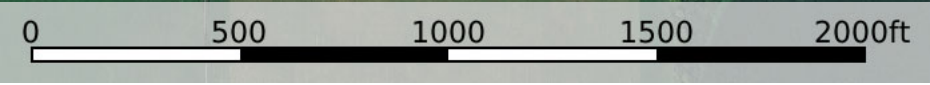
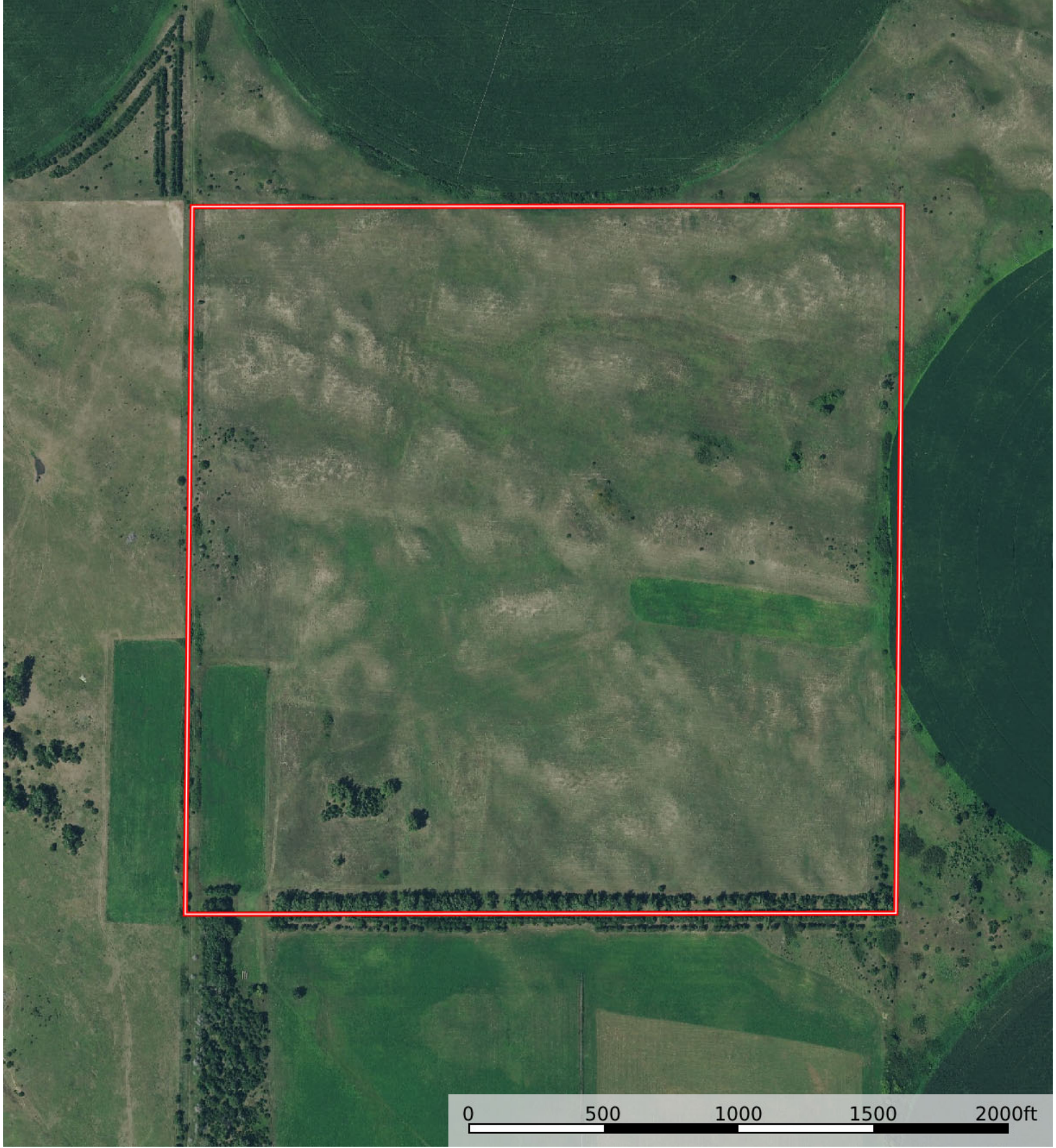


L-2500206

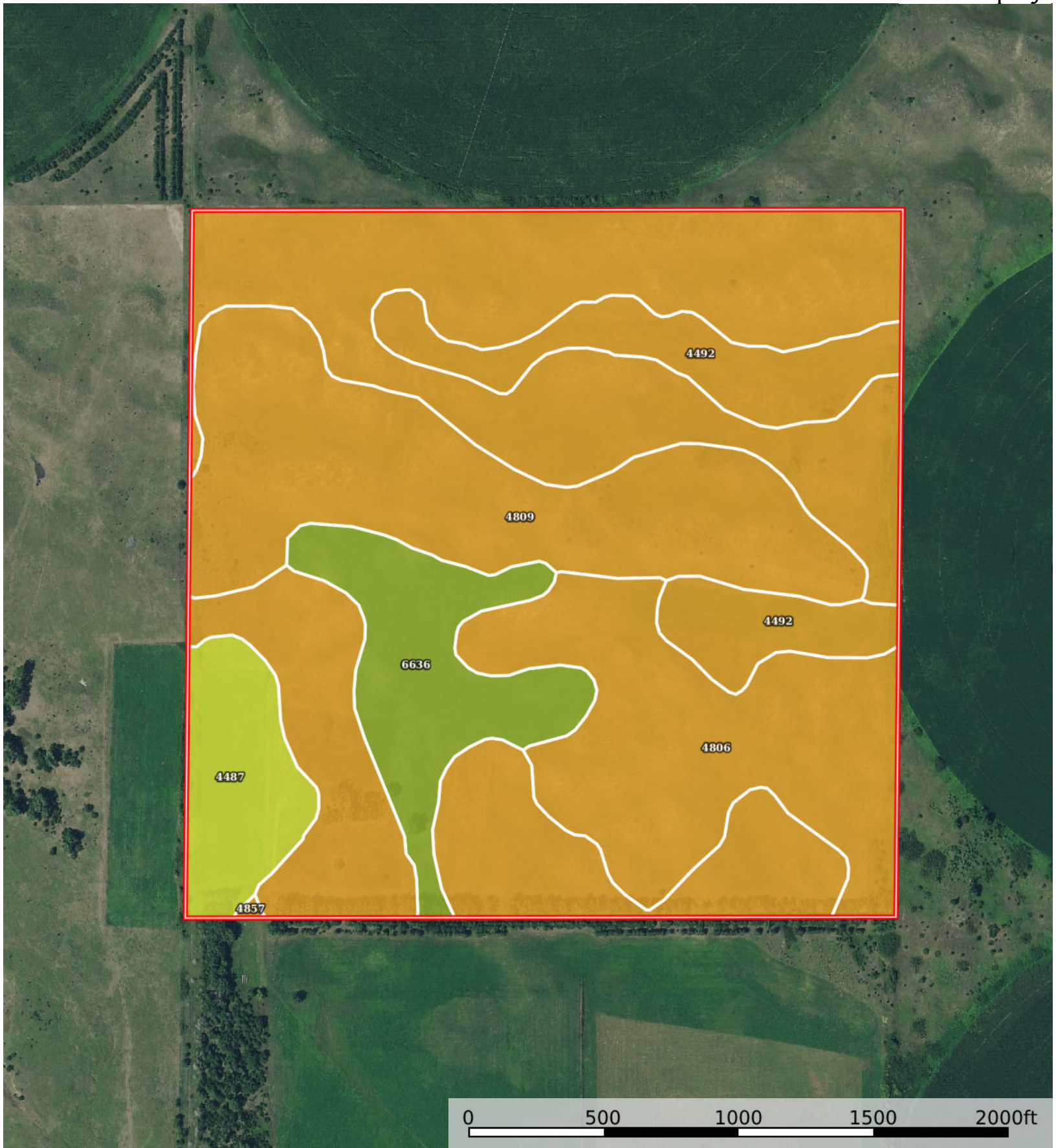
Wheeler County, Nebraska, 160 AC +/-



 Boundary



 Boundary



0 500 1000 1500 2000ft

 Boundary

Boundary 159.46 ac

SOIL CODE	SOIL DESCRIPTION	ACRES	%	CPI	NCCPI	CAP
4806	Valentine fine sand, rolling, 9 to 24 percent slopes, moist	79.18	49.66	0	25	6e
4809	Valentine fine sand, rolling and hilly, 9 to 60 percent slopes , moist	30.78	19.3	0	19	6e
4492	Dunday loamy fine sand, 3 to 9 percent slopes, moist	14.65	9.19	0	35	6e
6636	Boelus loamy fine sand, 0 to 2 percent slopes	13.97	8.76	0	56	3e
4857	Valentine-Dunday loamy fine sands, moist, 3-9 percent slopes	12.32	7.73	0	34	6e
4487	Dunday loamy fine sand, 0 to 3 percent slopes, moist	8.56	5.37	0	35	4e
TOTALS		159.46(*)	100%	-	28.71	5.63

(*) Total acres may differ in the second decimal compared to the sum of each acreage soil. This is due to a round error because we only show the acres of each soil with two decimal.

Capability Legend

Increased Limitations and Hazards

Decreased Adaptability and Freedom of Choice Users

Land, Capability

	1	2	3	4	5	6	7	8
'Wild Life'	•	•	•	•	•	•	•	•
Forestry	•	•	•	•	•	•	•	
Limited	•	•	•	•	•	•	•	
Moderate	•	•	•	•	•	•		
Intense	•	•	•	•	•			
Limited	•	•	•	•				
Moderate	•	•	•					
Intense	•	•						
Very Intense	•							

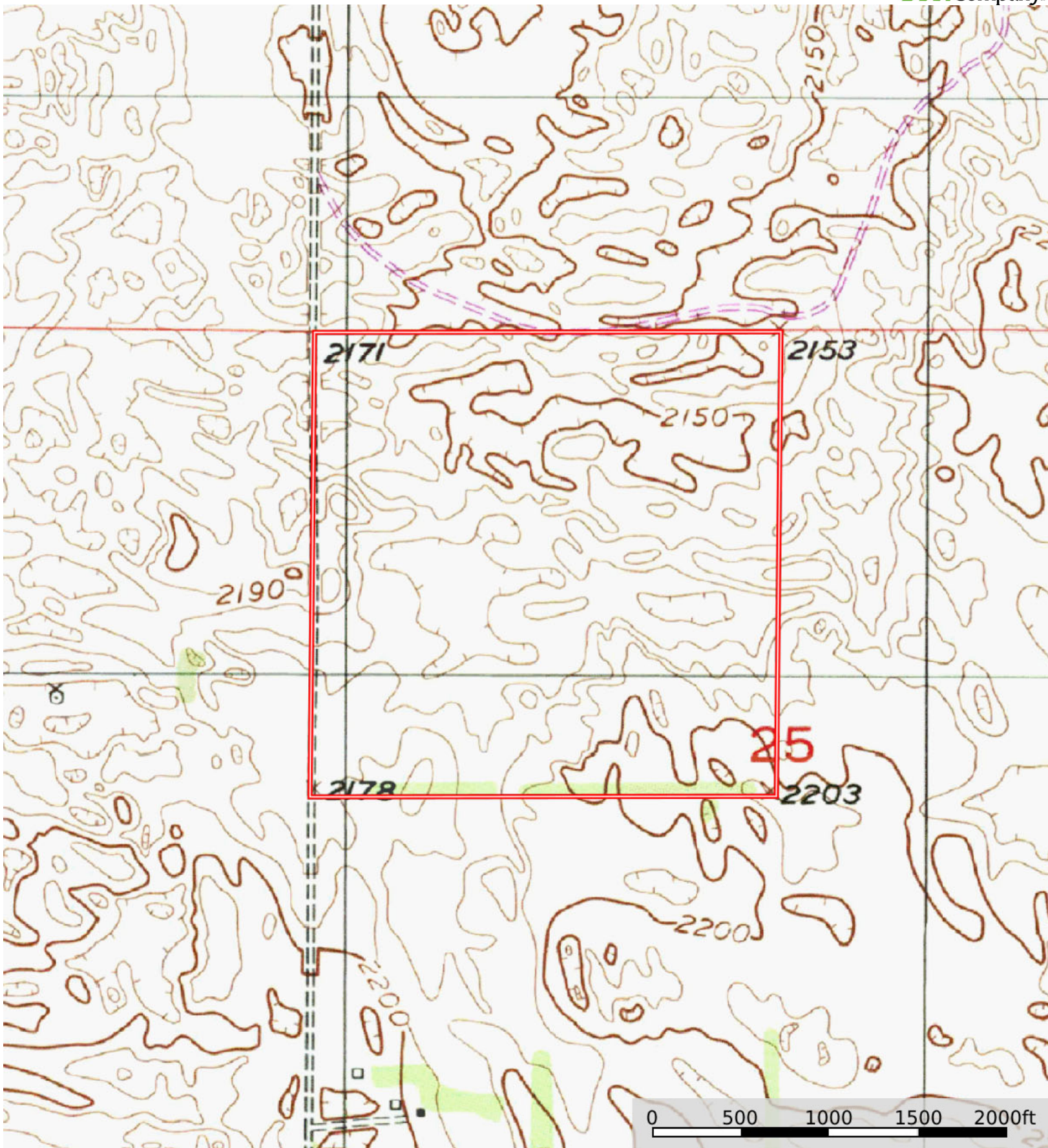
Grazing Cultivation

(c) climatic limitations (e) susceptibility to erosion

(s) soil limitations within the rooting zone (w) excess of water

L-2500206

Wheeler County, Nebraska, 160 AC +/-



 Boundary