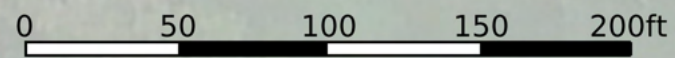
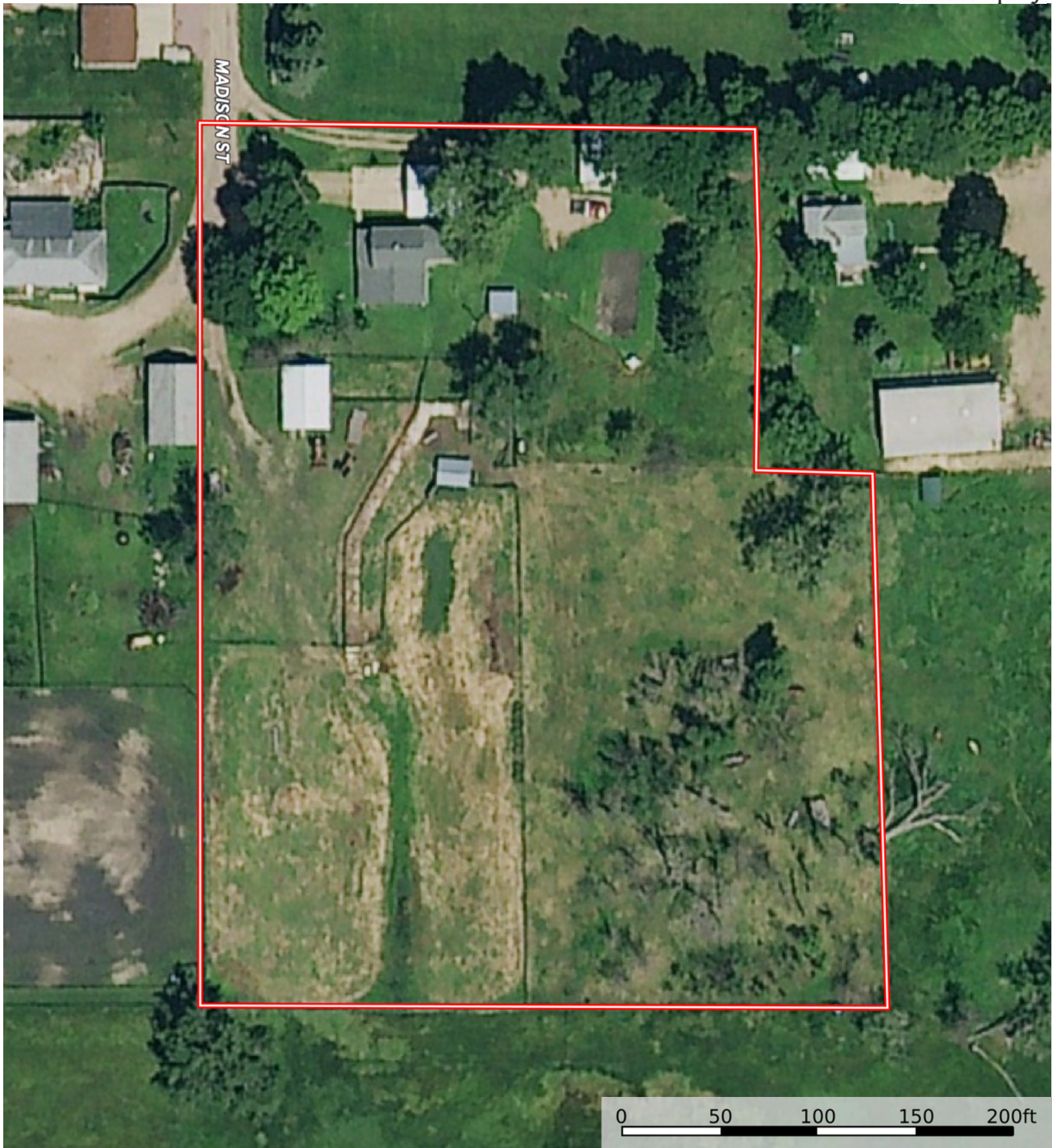
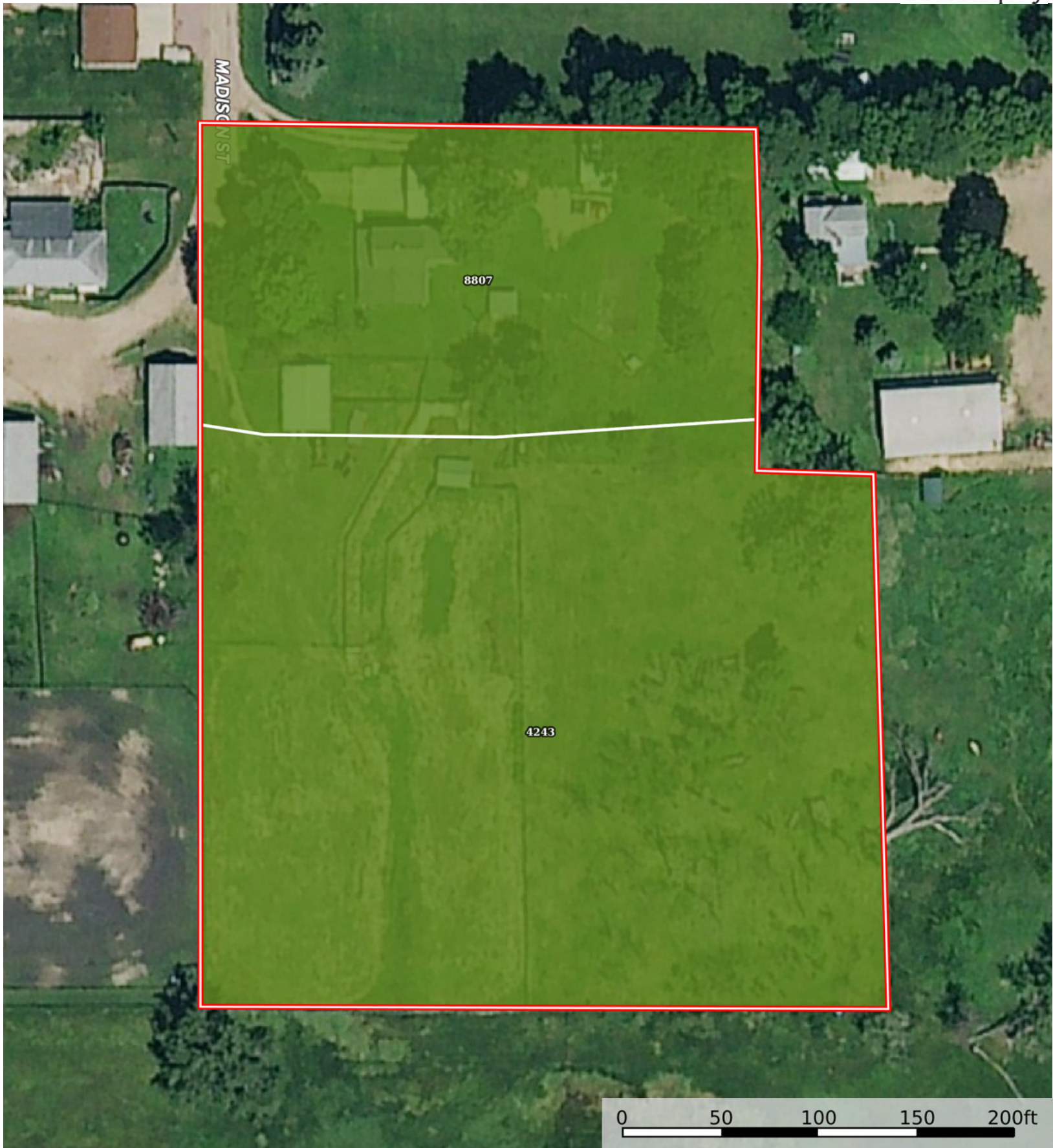


 Boundary



 Boundary



 Boundary

Boundary 3.36 ac

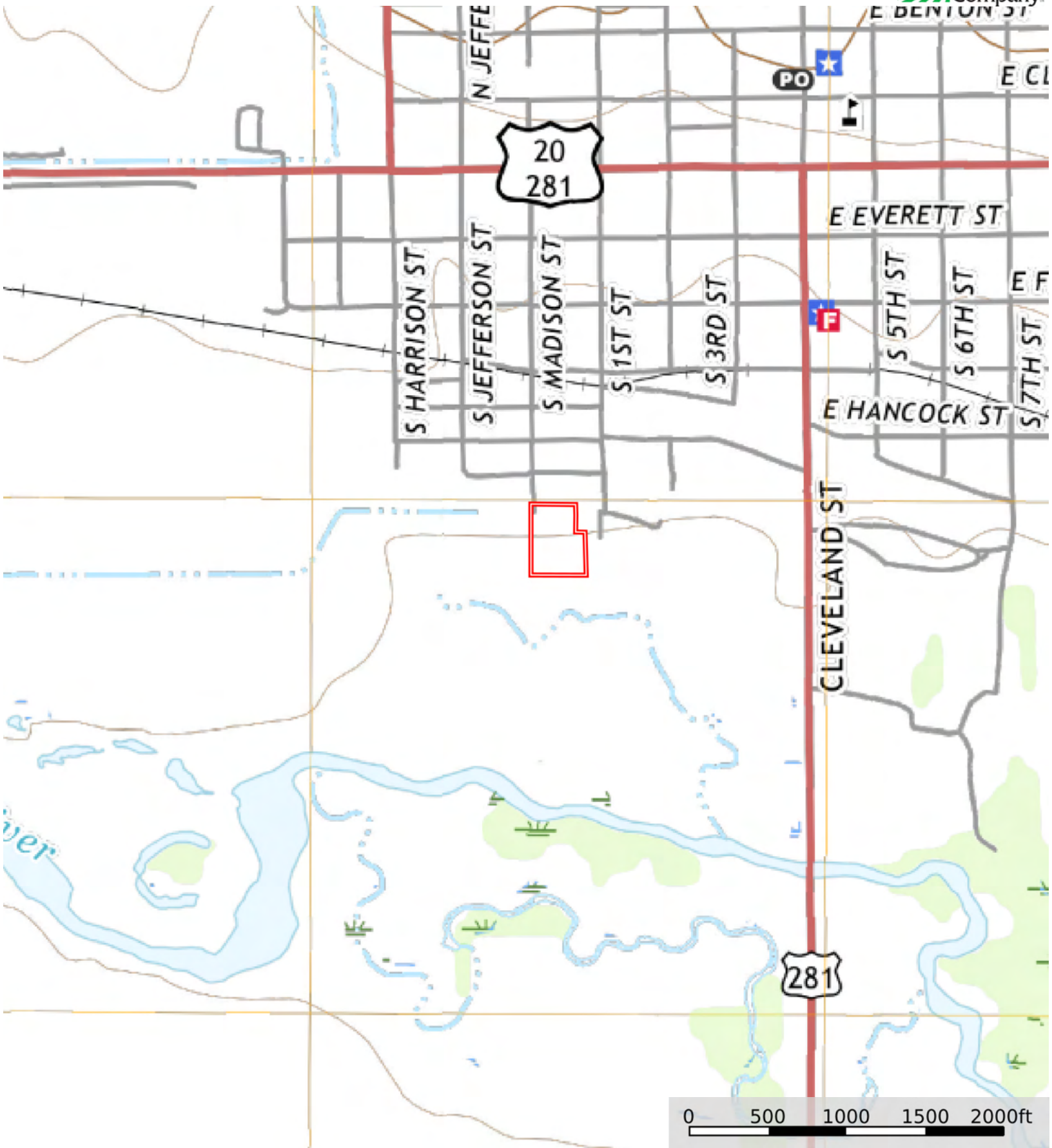
SOIL CODE	SOIL DESCRIPTION	ACRES	%	CPI	NCCPI	CAP
4243	Ord loam, rarely flooded	2.33	69.55	0	46	2w
8807	Anselmo-Oneill sandy loams, 0 to 3 percent slopes	1.03	30.75	0	46	2e
TOTALS		3.36(*)	100%	-	46.14	2.0

(*) Total acres may differ in the second decimal compared to the sum of each acreage soil. This is due to a round error because we only show the acres of each soil with two decimal.



L-2500233

Holt County, Nebraska, AC +/-



 Boundary