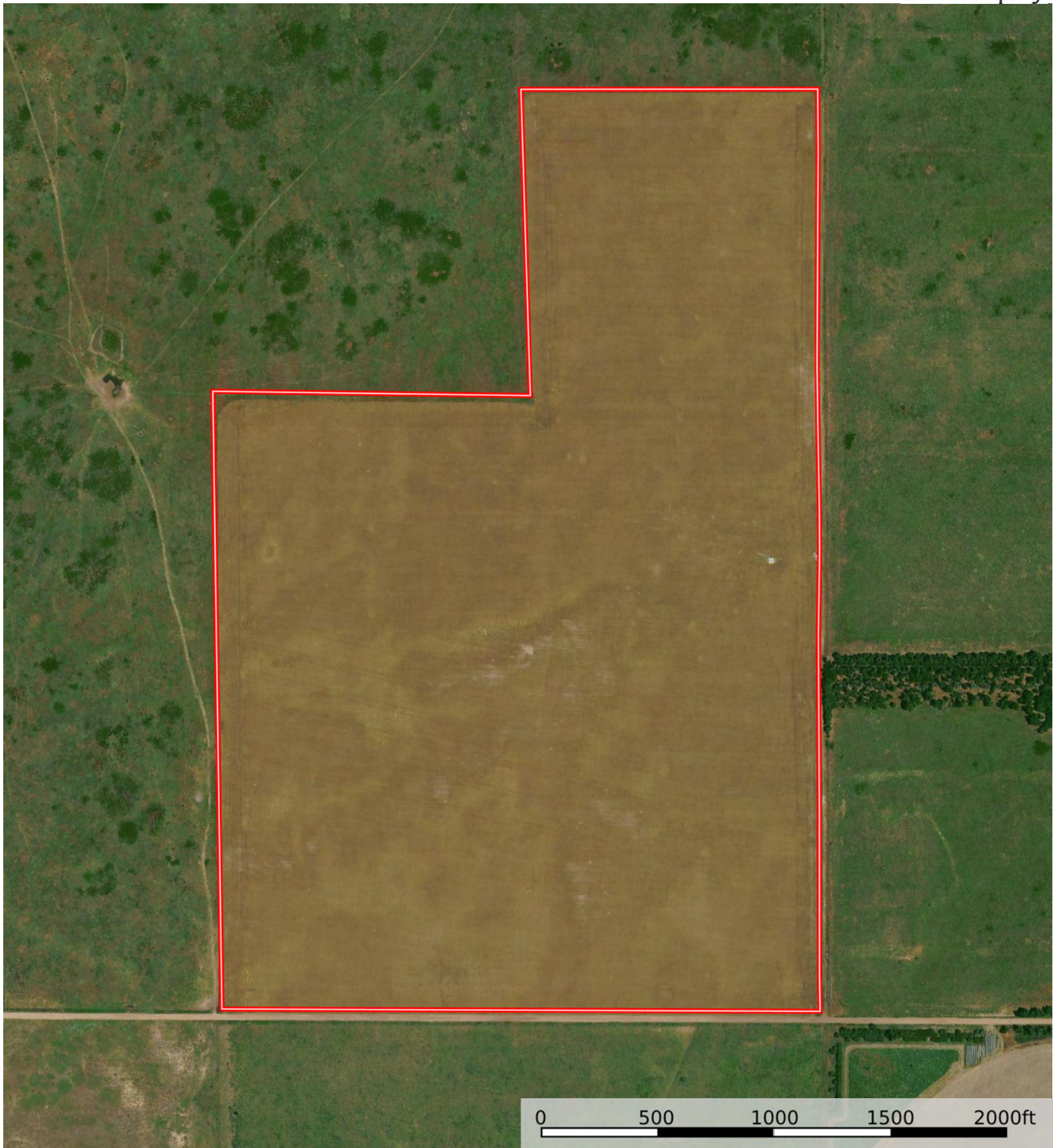
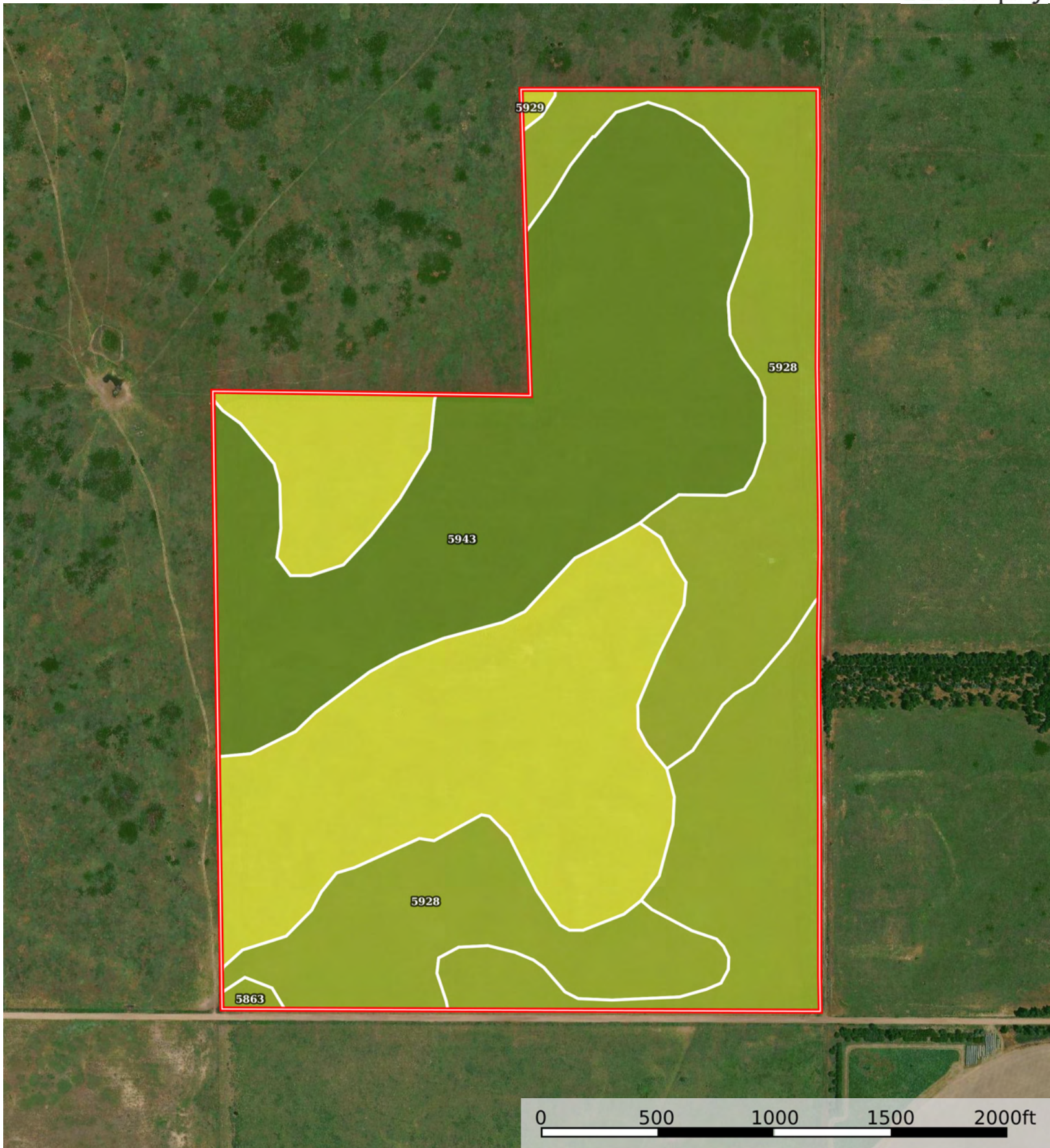


 Boundary



 Boundary



Boundary 196.11 ac

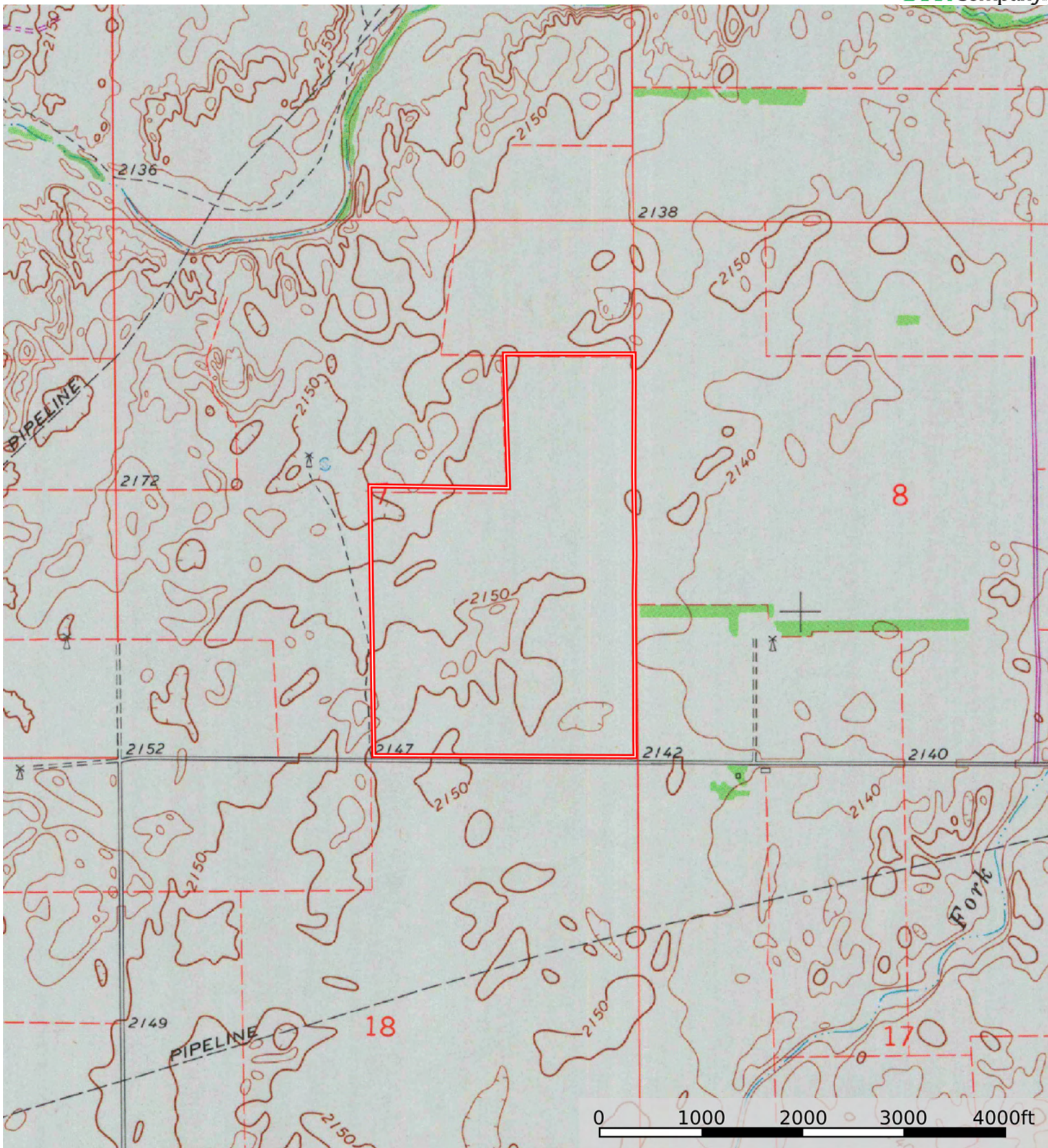
SOIL CODE	SOIL DESCRIPTION	ACRES	%	CPI	NCCPI	CAP
5943	Saltcreek and Naron fine sandy loams, 0 to 1 percent slopes	64.25	32.77	0	57	2c
5929	Pratt loamy fine sand, 5 to 12 percent slopes	57.25	29.2	0	31	4e
5928	Pratt loamy fine sand, 1 to 5 percent slopes	51.07	26.04	0	32	3e
5863	Attica loamy fine sand, 1 to 3 percent slopes	23.54	12.0	0	47	3e
TOTALS		196.1 1(*)	100%	-	41.7	2.96

(\*) Total acres may differ in the second decimal compared to the sum of each acreage soil. This is due to a round error because we only show the acres of each soil with two decimal.



L-2500243

Kiowa County, Kansas, 196.2 AC +/-



 Boundary