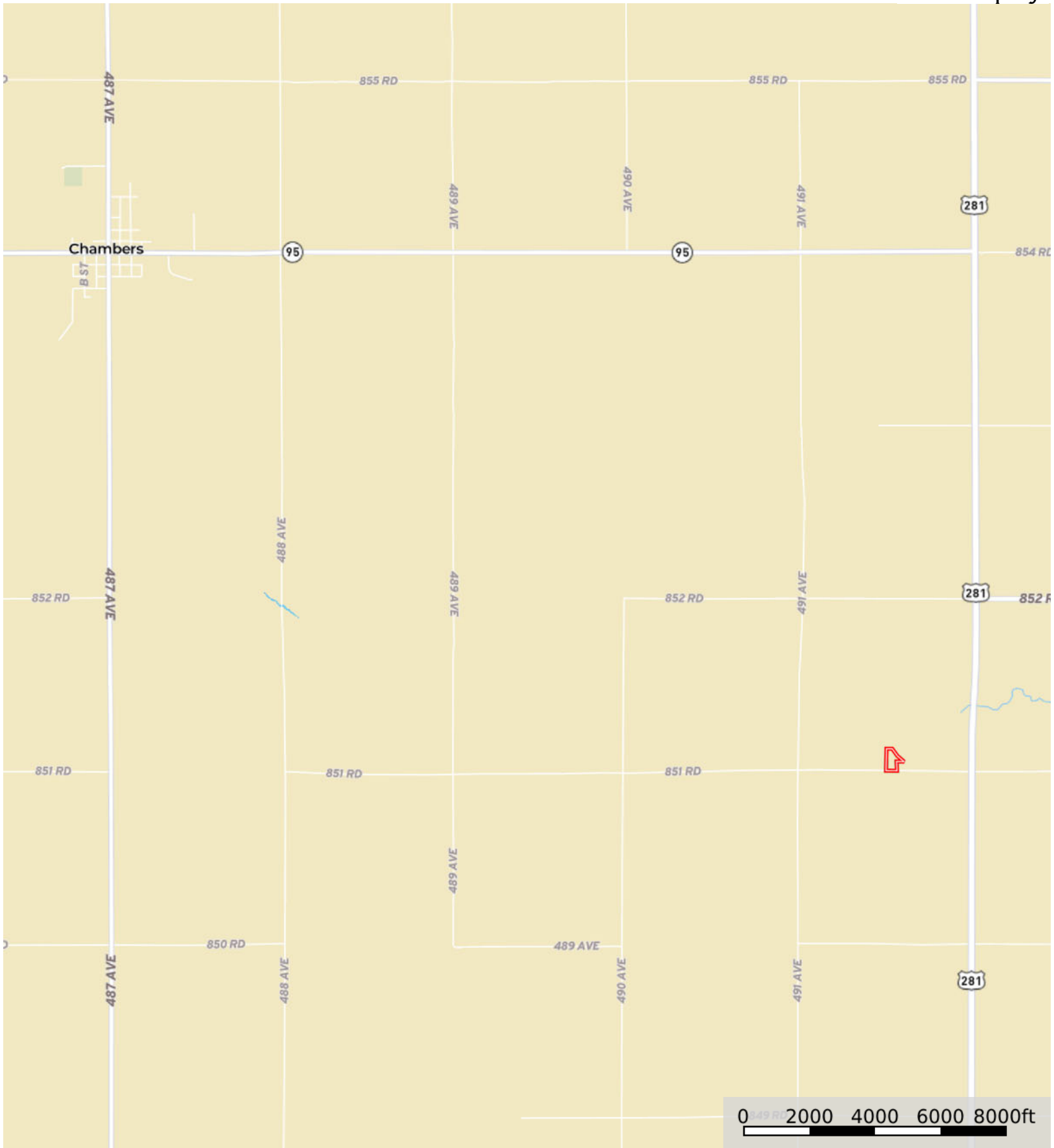


L-2500269

Holt County, Nebraska, 5.15 AC +/-



Boundary



Google



 Boundary



Google



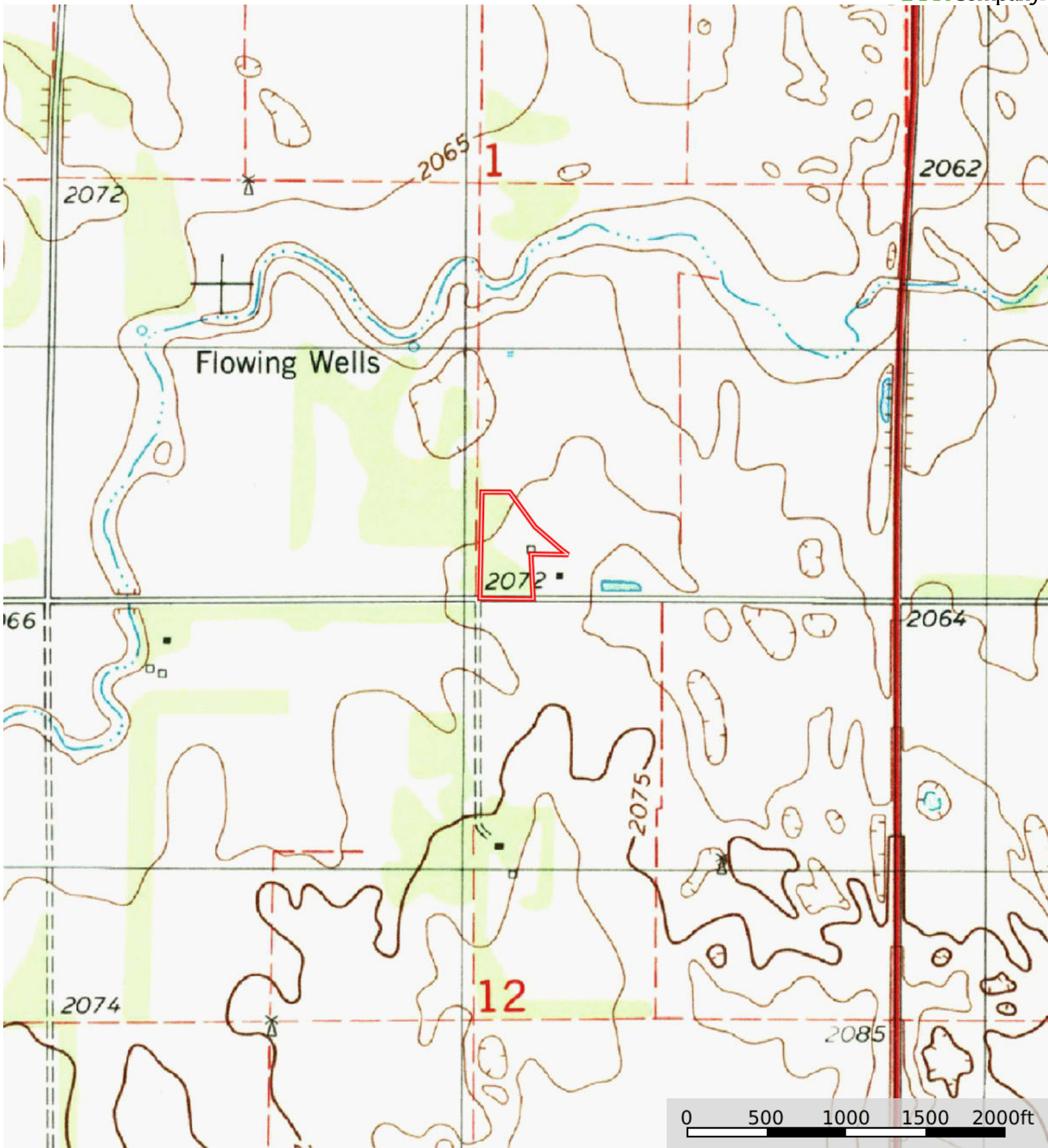
 Boundary


|  Boundary 5.13 ac

SOIL CODE	SOIL DESCRIPTION	ACRES	%	CPI	NCCPI	CAP
4646	lpage loamy fine sand, 0 to 3 percent slopes	4.64	90.45	54	31	4e
4374	Libory-Whitelake loamy fine sands, 0 to 3 percent slopes	0.49	9.55	0	46	3e
TOTALS		5.13(*)	100%	48.84	32.43	3.9

(*) Total acres may differ in the second decimal compared to the sum of each acreage soil. This is due to a round error because we only show the acres of each soil with two decimal.





 Boundary