

SCAN THE QR CODE
FOR MORE INFO!



LAND FOR SALE

159.7± Acres, Wallace County, Kansas

OFFERED AT
\$431,190

Highlights:

- Good quality dryland farm
- Close to grain markets
- Excellent access



For additional information, please contact:
Dustin Unruh, Agent | (620) 482-0898
DUnruh@FarmersNational.com

Property Information

Directions to Property:

From Sharon Springs, Kansas, travel west on Highway 40. Turn south on County Road 9. Travel south six miles. Property is located on the east side of the road between County Road 9 and Hickory Road.

Legal Description:

NW1/4 Sec 32-T14S-R41W, Wallace County, Kansas.

Property Description:

Productive tract featuring mostly Class II Ulysses Silt Loam soils, 1-3% slopes. Land is nearly all tillable with good road access on two sides and located just southwest of Sharon Springs, Kansas.

Farm Data:

Cropland 160.76 acres

FSA Information:

	Base	Yield
Wheat	56.10 acres	35 bushels
Corn	41.60 acres	155 bushels

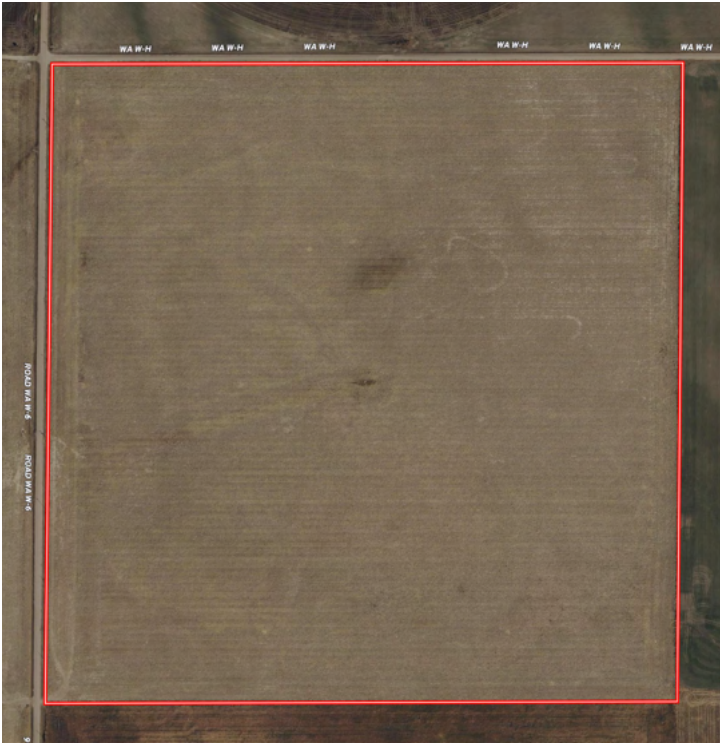
2024 Taxes: \$620.26

Price: \$431,190

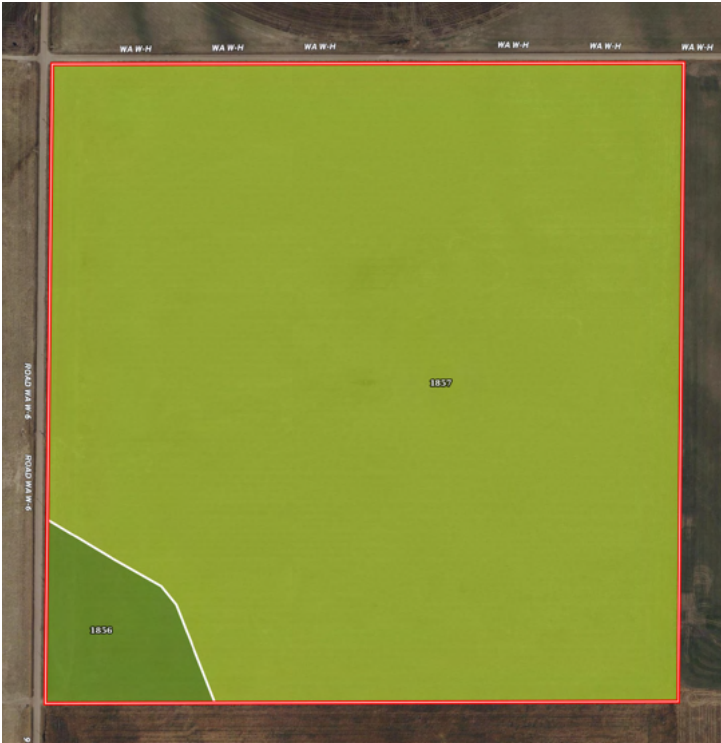


Information provided was obtained from sources deemed reliable, but the broker makes no guarantees as to its accuracy. All prospective buyers are urged to inspect the property, its title and to rely on their own conclusions. Seller reserves the right to refuse any or all offers submitted and may withdraw the property from offering without notice. Farmers National Company and its representatives on the reverse side are the Designated Agents for the seller.

Aerial Map



Soils Map



SOIL CODE	SOIL DESCRIPTION	ACRES	%	CPI	NCCPI	CAP
1857	Ulysses silt loam, 1 to 3 percent slopes	151.46	94.86	0	64	3e
1856	Ulysses silt loam, 0 to 1 percent slopes	8.21	5.14	0	64	2c
TOTALS		159.67(*)	100%	-	64.0	2.95



159.7± Acres, Wallace County, Kansas



**Real Estate Sales • Farm and Ranch Management • Energy Management
Appraisals • Insurance • Consultation • Forestry Management • Hunting Lease Network • FNC Securities**