



L-2500357

[www.FarmersNational.com/Oneill](http://www.FarmersNational.com/Oneill)

SCAN THE QR CODE  
FOR MORE INFO!



# LAND FOR SALE

544.56± Acres, Boyd County, Nebraska

OFFERED AT  
Tract 1: \$5,300/acre  
Tract 2: \$3,400/acre  
Tract 3: \$5,300/acre

## Highlights:

- Excellent cropland
- High quality pasture
- Timber, rural water, ponds



For additional information, please contact:

Dave Hickey, Agent | (402) 340-4436

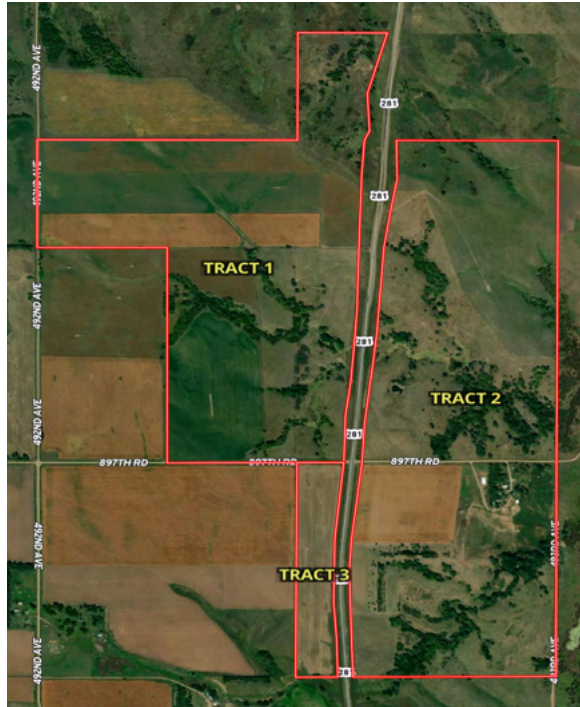
[DHickey@FarmersNational.com](mailto:DHickey@FarmersNational.com)





## Tract 1

## Aerial Map



## Soil Map



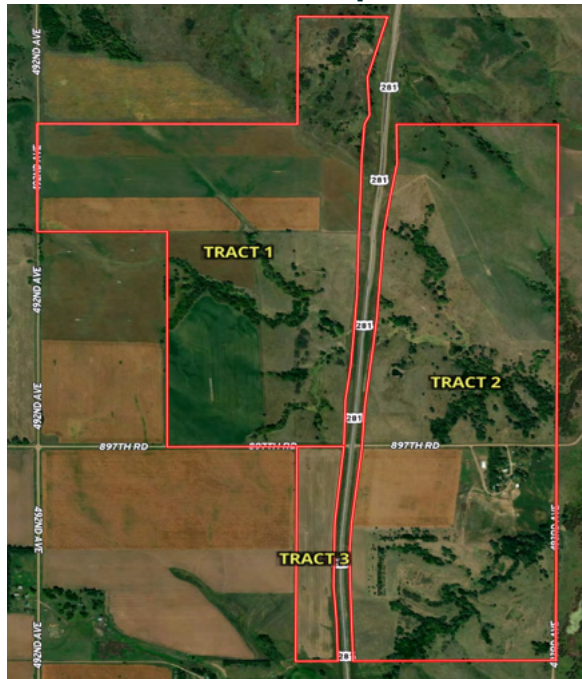
SOIL CODE	SOIL DESCRIPTION	ACRES	%	CPI	NCCPI	CAP
3305	Reliance silt loam, 2 to 6 percent slopes	92.36	39.03	86	53	3e
3225	Labu-Sansarc silty clays, 9 to 35 percent slopes	44.03	18.61	33	26	6e
5220	Onita silt loam, 0 to 2 percent slopes	43.23	18.27	94	60	2c
3306	Reliance silt loam, 6 to 11 percent slopes	40.39	17.07	0	51	4e
3150	Bristow silty clay, 20 to 40 percent slopes	9.43	3.99	0	6	7s
3234	Monowi-Bristow silty clays, 9 to 35 percent slopes	7.06	2.98	0	20	6e
3233	Monowi-Bristow silty clays, 6 to 15 percent slopes	0.11	0.05	0	25	4e
TOTALS		236.6 1(*)	100%	56.89	46.04	3.8



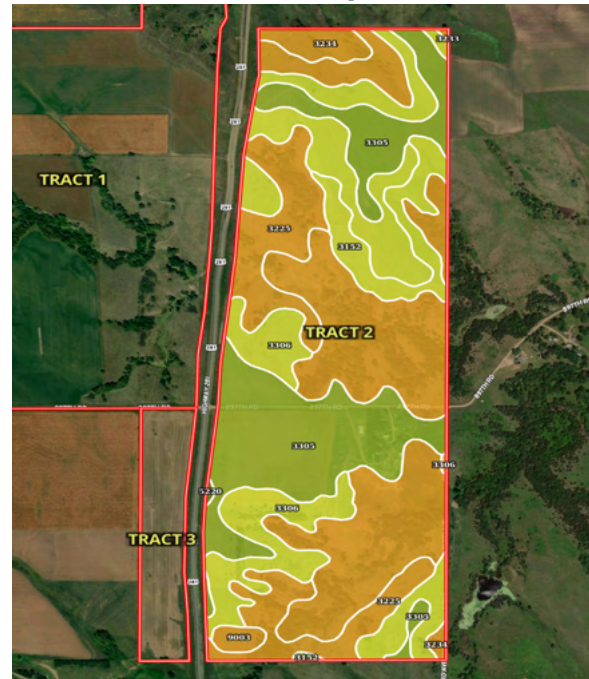


## Tract 2

## Aerial Map



## Soil Map



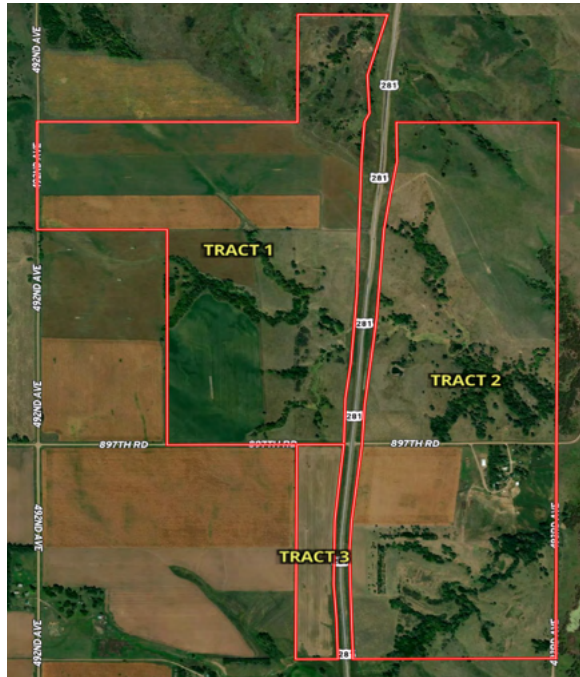
SOIL CODE	SOIL DESCRIPTION	ACRES	%	CPI	NCCPI	CAP
3234	Monowi-Bristow silty clays, 9 to 35 percent slopes	85.22	29.61	0	20	6e
3305	Reliance silt loam, 2 to 6 percent slopes	68.23	23.71	86	53	3e
3306	Reliance silt loam, 6 to 11 percent slopes	67.37	23.41	0	51	4e
3225	Labu-Sansarc silty clays, 9 to 35 percent slopes	48.75	16.94	33	26	6e
3152	Boyd silty clay, 6 to 11 percent slopes	15.43	5.36	0	36	4e
9003	Anselmo fine sandy loam, 9 to 15 percent slopes	2.48	0.86	40	38	6e
5220	Onita silt loam, 0 to 2 percent slopes	0.32	0.11	94	60	2c
3233	Monowi-Bristow silty clays, 6 to 15 percent slopes	0.02	0.01	0	25	4e
TOTALS		287.82(*)	100%	26.43	37.15	4.71





### Tract 3

## Aerial Map



## Soil Map



SOIL CODE	SOIL DESCRIPTION	ACRES	%	CPI	NCCPI	CAP
3305	Reliance silt loam, 2 to 6 percent slopes	12.89	51.93	86	53	3e
3306	Reliance silt loam, 6 to 11 percent slopes	7.49	30.18	0	51	4e
5220	Onita silt loam, 0 to 2 percent slopes	2.4	9.67	94	60	2c
3225	Labu-Sansarc silty clays, 9 to 35 percent slopes	2.04	8.22	33	26	6e
TOTALS		24.82( *)	100%	56.46	50.85	3.45





# LAND FOR SALE

**544.56± Acres, Boyd County, Nebraska**



**Farmers  
National  
Company™**

**[www.FarmersNational.com/ONeill](http://www.FarmersNational.com/ONeill)**

**Real Estate Sales • Farm and Ranch Management • Energy Management  
Appraisals • Insurance • Consultations • Forestry Management • Hunting Lease Network • FNC Securities**