

SCAN THE QR CODE
FOR MORE INFO!



LAND FOR SALE

153± Acres, Rock County, Nebraska

OFFERED AT
**\$765,000 or
\$5,000 per acre**

Highlights:

- Good location
- Electric power
- Good irrigated quarter



For additional information, please contact:
Dave Hickey, Agent | (402) 340-4436
DHickey@FarmersNational.com

Property Information

Property Description: Rock County pivot irrigated quarter-section northeast of Bassett. This farm features Valley irrigation equipment and a 75 hp electric motor providing power. Currently planted to corn, this farm offers good location with excellent access and 128 certified irrigated acres. Call the agent for details.

Directions to Property: From Bassett, Nebraska, travel 4 miles north on Highway 7, then 1¾ miles east to the northwest corner of the property.

Legal Description: Part of the Northeast Quarter (NE¼) of Section 26, Township 31 North, Range 19 West of the 6th P.M., Rock County, Nebraska.

Price: \$765,000 or \$5,000 per acre

Taxes: \$3,096.52

Upper Elkhorn NRD: 128 certified irrigated acres

Irrigation Equipment: Valley 9-tower pivot with drops nozzled at 1000 gpm; 86 hp electric motor

FSA Information:

Farm #2516

Tract #2500

FSA Cropland Acres: 127.12

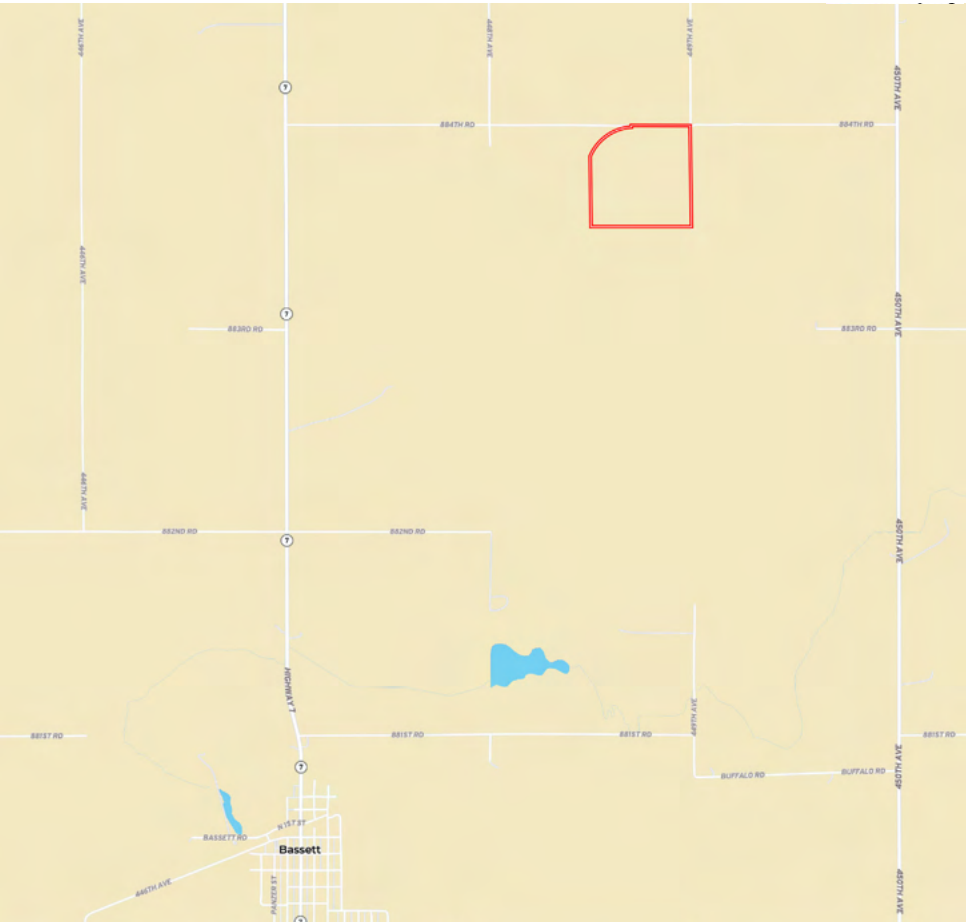
Crops	Base	PLC Yield
Corn	124.9 acres	149 bushels
Soybeans	0.7 acres	38 bushels
Total	125.6 acres	

Well Information

Registration #	GPM	Well Depth	Static Level	Pump Level	Col. Diam.	Year Drilled
G-031496	1000	302	8	95	9	1969

(Information obtained from State Dept. of Water Resources)

Location Map

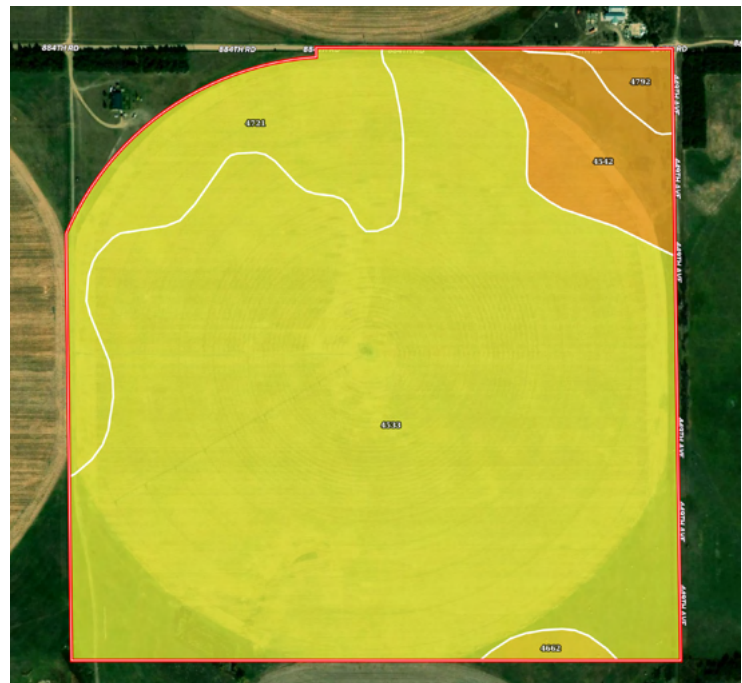


Information provided was obtained from sources deemed reliable, but the broker makes no guarantees as to its accuracy. All prospective buyers are urged to inspect the property, its title and to rely on their own conclusions. Seller reserves the right to refuse any or all offers submitted and may withdraw the property from offering without notice. Farmers National Company and its representatives on the reverse side are the Designated Agents for the seller.

Aerial Map



Soil Map



SOIL CODE	SOIL DESCRIPTION	ACRES	%	CPI	NCCPI	CAP
4533	Els loamy sand, 0 to 3 percent slopes	118.85	79.12	0	30	4w
4721	Pivot loamy sand, 0 to 3 percent slopes	18.57	12.36	0	33	4e
4542	Els-lpage complex, 0 to 3 percent slopes	9.27	6.17	0	26	6w
4792	Valentine fine sand, 3 to 9 percent slopes, moist	2.27	1.51	0	31	6e
4662	Loup fine sandy loam, 0 to 1 percent slopes	1.26	0.84	30	26	5w
TOTALS		150.22(*)	100%	0.25	30.11	4.16



LAND FOR SALE

153± Acres, Rock County, Nebraska



SCAN THE QR CODE
FOR MORE INFO!



www.FarmersNational.com

Real Estate Sales • Farm and Ranch Management • Energy Management
Appraisals • Insurance • Consultations • Forestry Management • Hunting Lease Network • FNC Securities