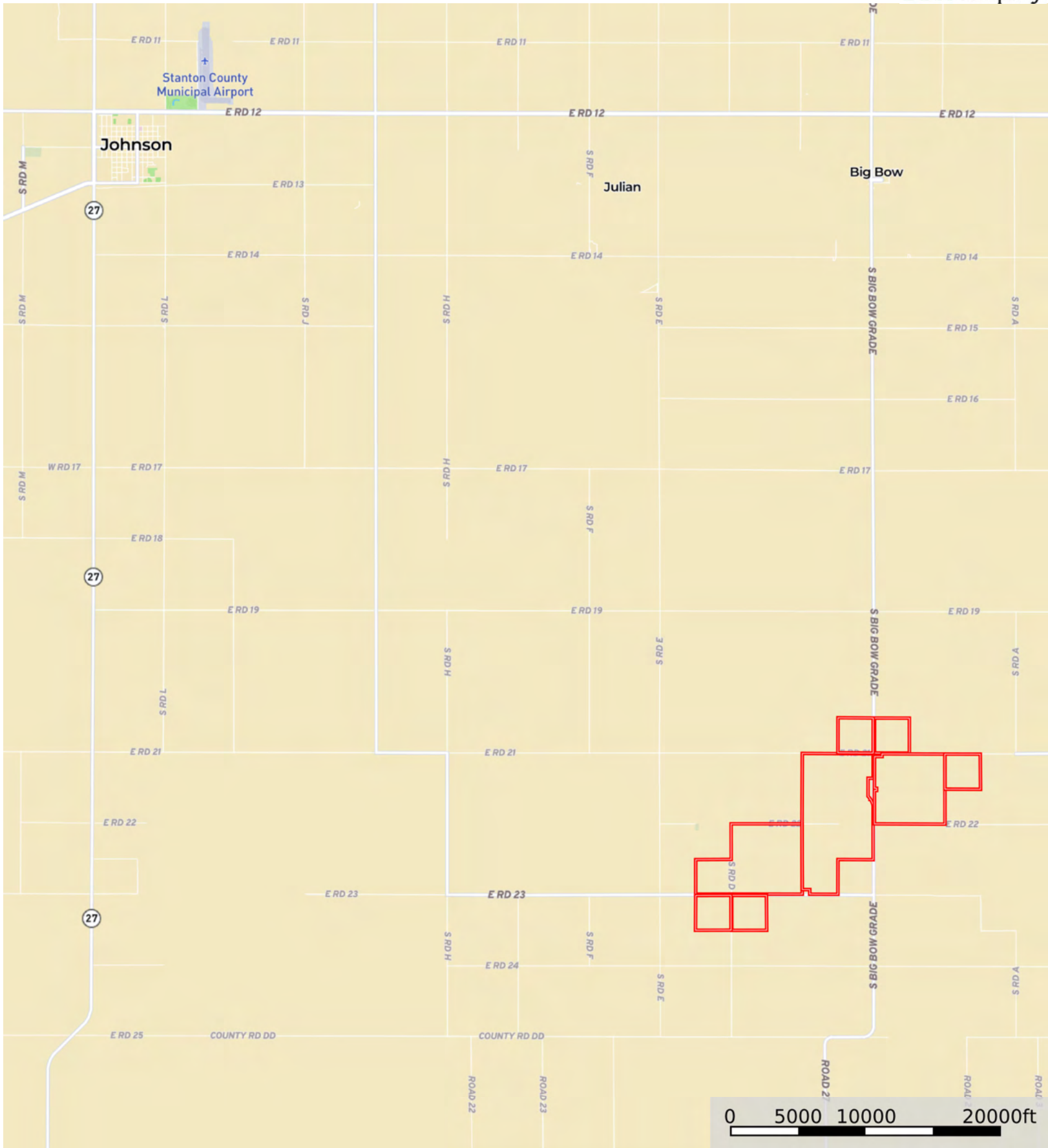


L-2500551

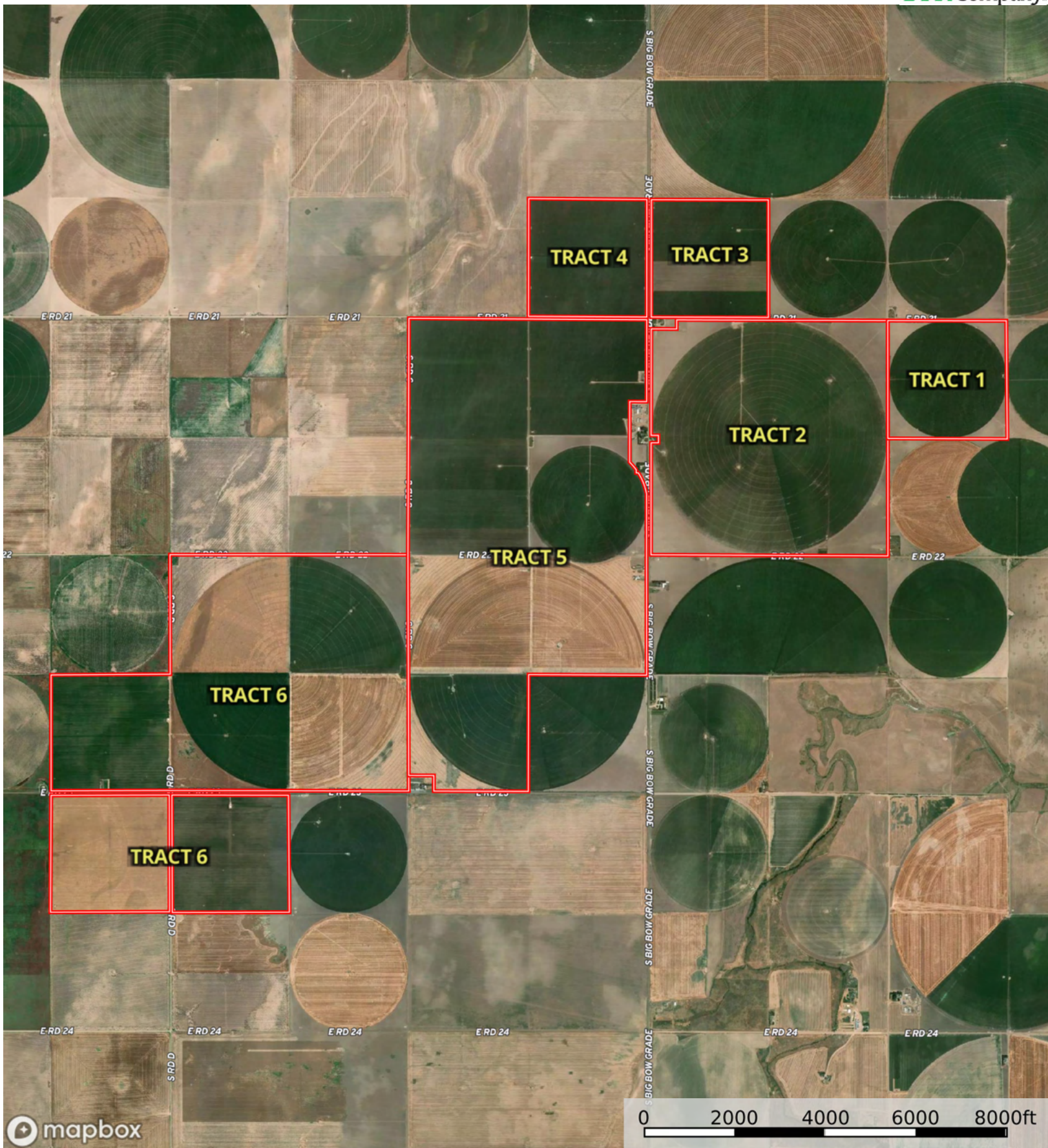
Stanton County, Kansas, 3272.8 AC +/-



 Boundary



The information contained herein was obtained from sources deemed to be reliable. Land id® Services makes no warranties or guarantees as to the completeness or accuracy thereof.



 Boundary

L-2500551

Stanton County, Kansas, 3272.8 AC +/-



mapbox

0 200 400 600 800ft

Boundary



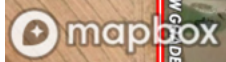
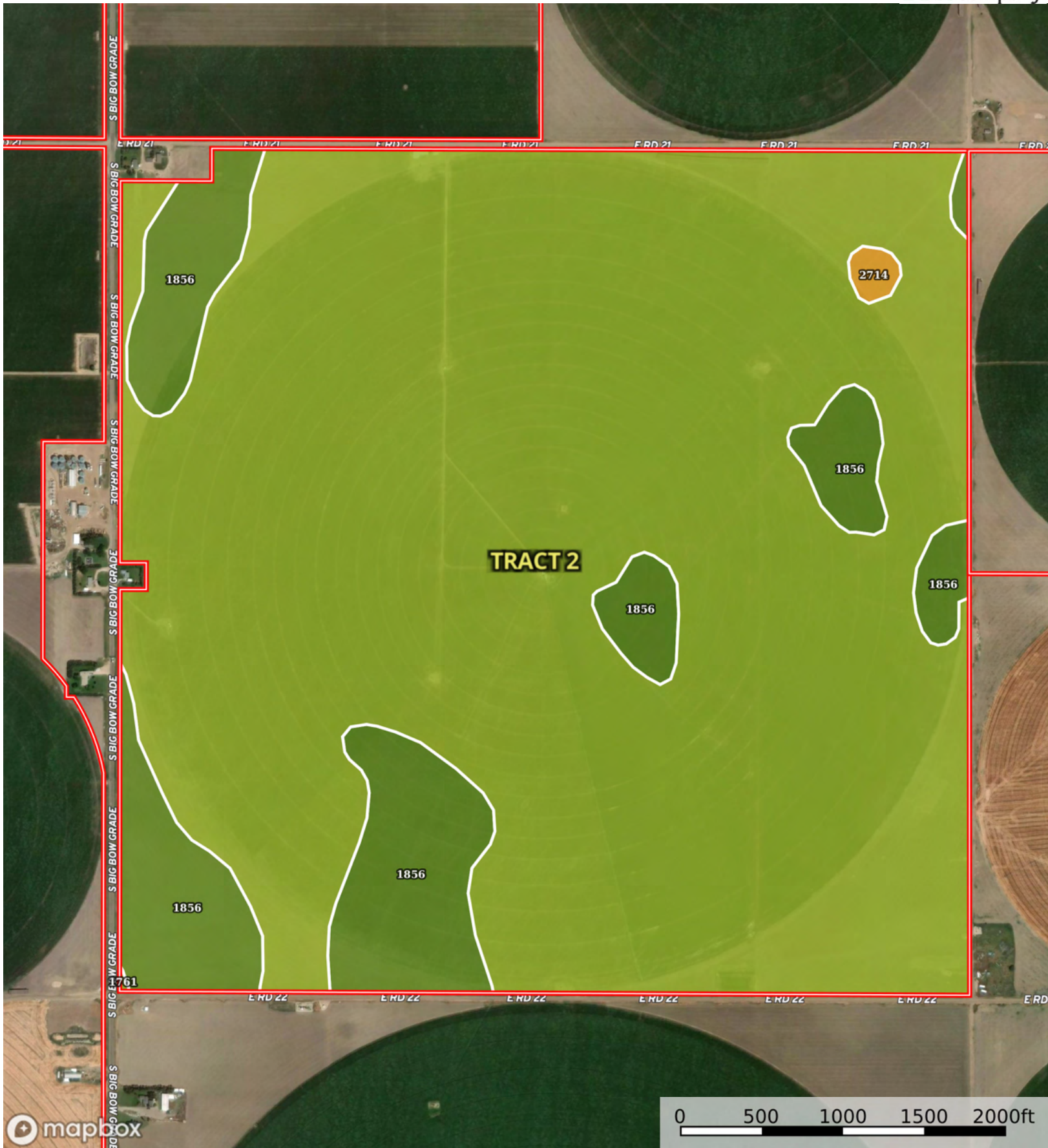
The information contained herein was obtained from sources deemed to be reliable. Land id® Services makes no warranties or guarantees as to the completeness or accuracy thereof.

Boundary 158.01 ac

SOIL CODE	SOIL DESCRIPTION	ACRES	%	CPI	NCCPI	CAP
1761	Richfield silt loam, 0 to 1 percent slopes	121.8	77.08	0	65	3c
1856	Ulysses silt loam, 0 to 1 percent slopes	36.21	22.92	0	64	2c
TOTALS		158.0 1(*)	100%	-	64.77	2.77

(*) Total acres may differ in the second decimal compared to the sum of each acreage soil. This is due to a round error because we only show the acres of each soil with two decimal.





 Boundary

Boundary 623.36 ac

SOIL CODE	SOIL DESCRIPTION	ACRES	%	CPI	NCCPI	CAP
1761	Richfield silt loam, 0 to 1 percent slopes	533.8 1	85.64	0	65	3c
1856	Ulysses silt loam, 0 to 1 percent slopes	87.6	14.05	0	64	2c
2714	Ness silty clay loam, 0 to 1 percent slopes, occasionally ponded	1.95	0.31	0	29	6w
TOTALS		623.3 6(*)	100%	-	64.75	2.87

(*) Total acres may differ in the second decimal compared to the sum of each acreage soil. This is due to a round error because we only show the acres of each soil with two decimal.





 Boundary

|  Boundary 154.69 ac

SOIL CODE	SOIL DESCRIPTION	ACRES	%	CPI	NCCPI	CAP
1761	Richfield silt loam, 0 to 1 percent slopes	126.4 1	81.72	0	65	3c
1856	Ulysses silt loam, 0 to 1 percent slopes	28.28	18.28	0	64	2c
TOTALS		154.6 9(*)	100%	-	64.82	2.82









(*) Total acres may differ in the second decimal compared to the sum of each acreage soil. This is due to a round error because we only show the acres of each soil with two decimal.

Capability Legend

Increased Limitations and Hazards

Decreased Adaptability and Freedom of Choice Users

Land, Capability

								
	1	2	3	4	5	6	7	8
'Wild Life'	•	•	•	•	•	•	•	•
Forestry	•	•	•	•	•	•	•	
Limited	•	•	•	•	•	•	•	
Moderate	•	•	•	•	•	•		
Intense	•	•	•	•	•			
Limited	•	•	•	•				
Moderate	•	•	•					
Intense	•	•						
Very Intense	•							

Grazing Cultivation

(c) climatic limitations (e) susceptibility to erosion

(s) soil limitations within the rooting zone (w) excess of water

L-2500551

Stanton County, Kansas, 3272.8 AC +/-



 Boundary

|  Boundary 156.44 ac

SOIL CODE	SOIL DESCRIPTION	ACRES	%	CPI	NCCPI	CAP
1761	Richfield silt loam, 0 to 1 percent slopes	150.27	96.05	0	65	3c
1856	Ulysses silt loam, 0 to 1 percent slopes	6.17	3.94	0	64	2c
TOTALS		156.44(*)	100%	-	64.96	2.96









(*) Total acres may differ in the second decimal compared to the sum of each acreage soil. This is due to a round error because we only show the acres of each soil with two decimal.

Capability Legend

Increased Limitations and Hazards

Decreased Adaptability and Freedom of Choice Users

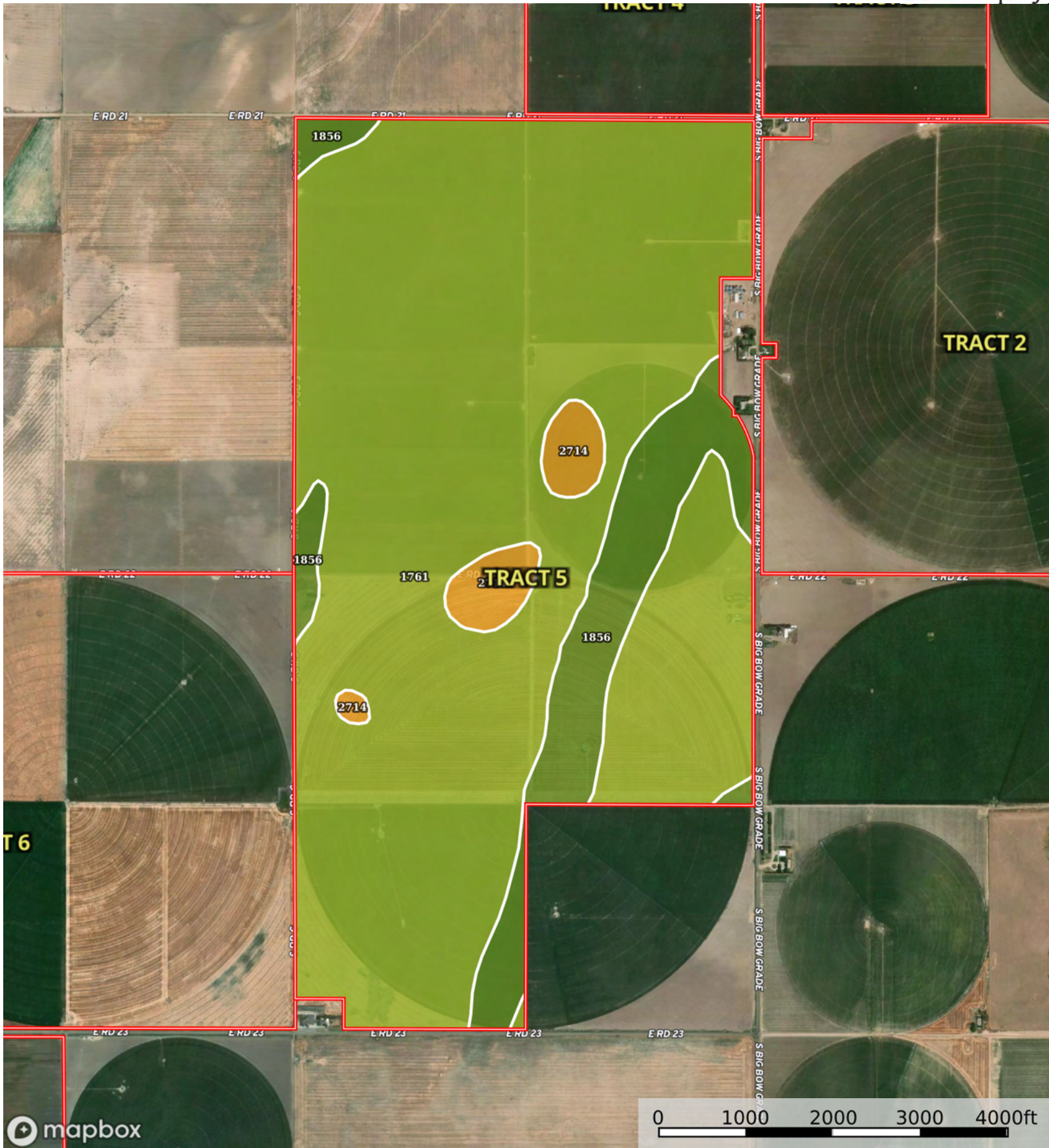
Land, Capability

								
	1	2	3	4	5	6	7	8
'Wild Life'	•	•	•	•	•	•	•	•
Forestry	•	•	•	•	•	•	•	
Limited	•	•	•	•	•	•	•	
Moderate	•	•	•	•	•	•		
Intense	•	•	•	•	•			
Limited	•	•	•	•				
Moderate	•	•	•					
Intense	•	•						
Very Intense	•							

Grazing Cultivation

(c) climatic limitations (e) susceptibility to erosion

(s) soil limitations within the rooting zone (w) excess of water



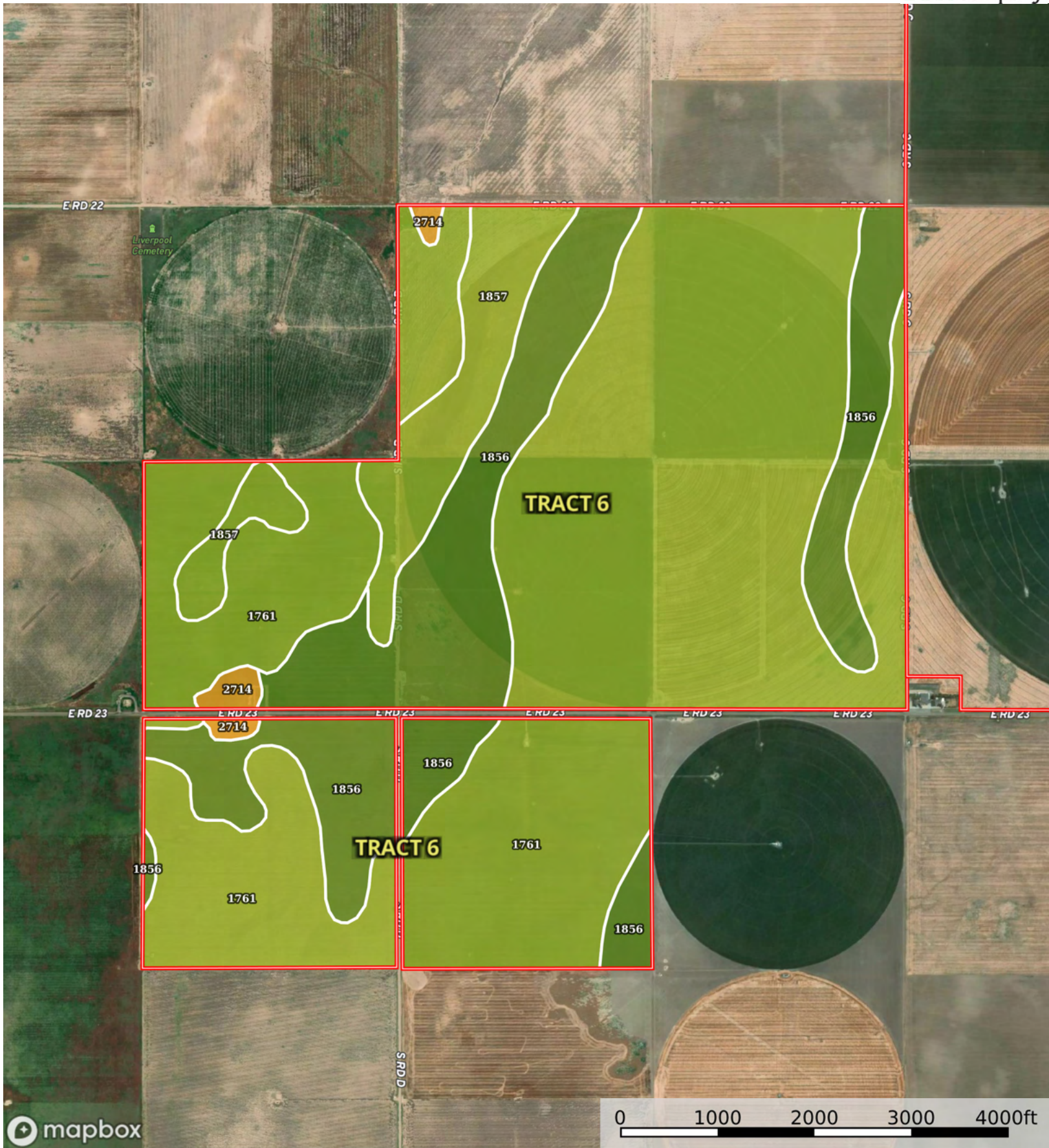
 Boundary

|  Boundary 1092.88 ac

SOIL CODE	SOIL DESCRIPTION	ACRES	%	CPI	NCCPI	CAP
1761	Richfield silt loam, 0 to 1 percent slopes	927.3	84.85	0	65	3c
1856	Ulysses silt loam, 0 to 1 percent slopes	130.8 2	11.97	0	64	2c
2714	Ness silty clay loam, 0 to 1 percent slopes, occasionally ponded	34.76	3.18	0	29	6w
TOTALS		1092. 88(*)	100%	-	63.74	2.98

(*) Total acres may differ in the second decimal compared to the sum of each acreage soil. This is due to a round error because we only show the acres of each soil with two decimal.





 Boundary

|  All Polygons 1099.34 ac

SOIL CODE	SOIL DESCRIPTION	ACRES	%	CPI	NCCPI	CAP
1761	Richfield silt loam, 0 to 1 percent slopes	747.38	67.98	0	65	3c
1856	Ulysses silt loam, 0 to 1 percent slopes	257.35	23.41	0	64	2c
1857	Ulysses silt loam, 1 to 3 percent slopes	84.71	7.71	0	64	3e
2714	Ness silty clay loam, 0 to 1 percent slopes, occasionally ponded	9.9	0.9	0	29	6w
TOTALS		1099.34(*)	100%	-	64.36	2.79

(*) Total acres may differ in the second decimal compared to the sum of each acreage soil. This is due to a round error because we only show the acres of each soil with two decimal.

|  Boundary 154.25 ac

SOIL CODE	SOIL DESCRIPTION	ACRES	%	CPI	NCCPI	CAP
1761	Richfield silt loam, 0 to 1 percent slopes	126.99	82.32	0	65	3c
1856	Ulysses silt loam, 0 to 1 percent slopes	27.26	17.67	0	64	2c
TOTALS		154.25(*)	100%	-	64.82	2.82

(*) Total acres may differ in the second decimal compared to the sum of each acreage soil. This is due to a round error because we only show the acres of each soil with two decimal.

|  Boundary 156.1 ac

SOIL CODE	SOIL DESCRIPTION	ACRES	%	CPI	NCCPI	CAP
1761	Richfield silt loam, 0 to 1 percent slopes	94.4	60.47	0	65	3c
1856	Ulysses silt loam, 0 to 1 percent slopes	59.26	37.96	0	64	2c
2714	Ness silty clay loam, 0 to 1 percent slopes, occasionally ponded	2.44	1.56	0	29	6w
TOTALS		156.1(*)	100%	-	64.05	2.67

(*) Total acres may differ in the second decimal compared to the sum of each acreage soil. This is due to a round error because we only show the acres of each soil with two decimal.

|  Boundary 788.99 ac

SOIL CODE	SOIL DESCRIPTION	ACRES	%	CPI	NCCPI	CAP
1761	Richfield silt loam, 0 to 1 percent slopes	525.99	66.67	0	65	3c
1856	Ulysses silt loam, 0 to 1 percent slopes	170.83	21.65	0	64	2c
1857	Ulysses silt loam, 1 to 3 percent slopes	84.71	10.74	0	64	3e
2714	Ness silty clay loam, 0 to 1 percent slopes, occasionally ponded	7.46	0.95	0	29	6w
TOTALS		788.99(*)	100%	-	64.34	2.81









(*) Total acres may differ in the second decimal compared to the sum of each acreage soil. This is due to a round error because we only show the acres of each soil with two decimal.

Capability Legend

Increased Limitations and Hazards

Decreased Adaptability and Freedom of Choice Users

Land, Capability

								
	1	2	3	4	5	6	7	8
'Wild Life'	•	•	•	•	•	•	•	•
Forestry	•	•	•	•	•	•	•	
Limited	•	•	•	•	•	•	•	
Moderate	•	•	•	•	•	•		
Intense	•	•	•	•	•			
Limited	•	•	•	•				
Moderate	•	•	•					
Intense	•	•						
Very Intense	•							

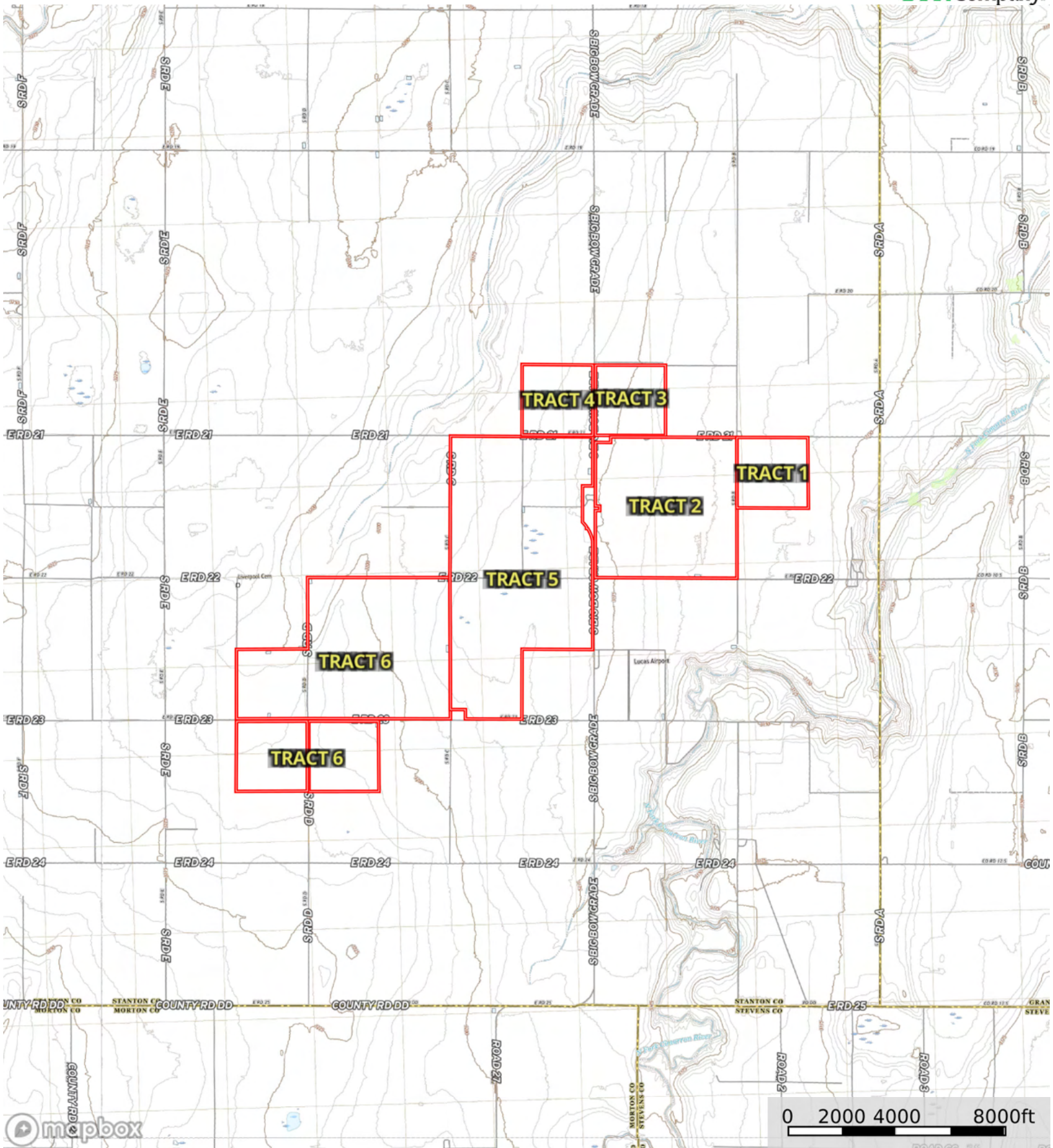
Grazing Cultivation

(c) climatic limitations (e) susceptibility to erosion

(s) soil limitations within the rooting zone (w) excess of water

L-2500551

Stanton County, Kansas, 3272.8 AC +/-



Boundary