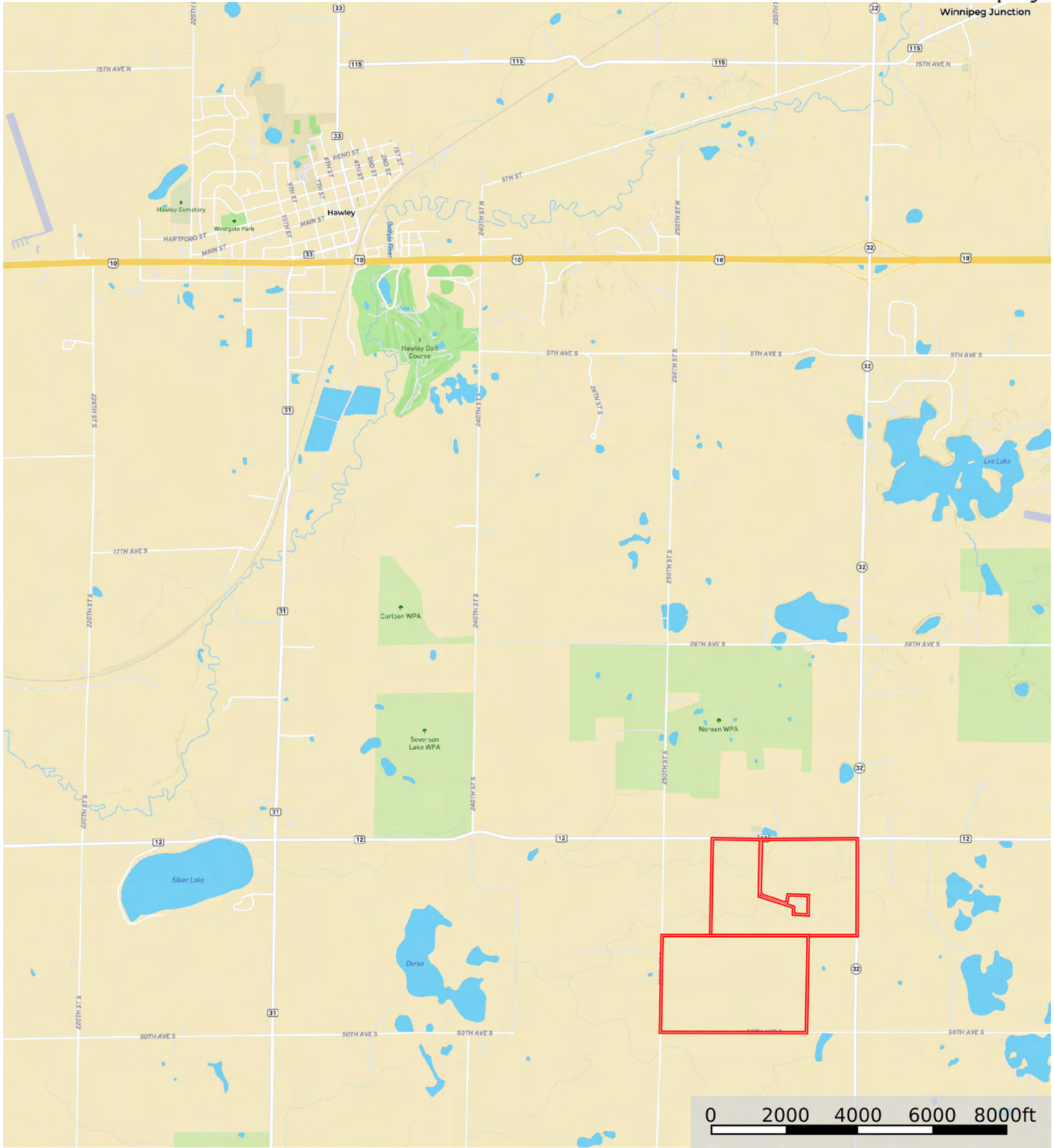

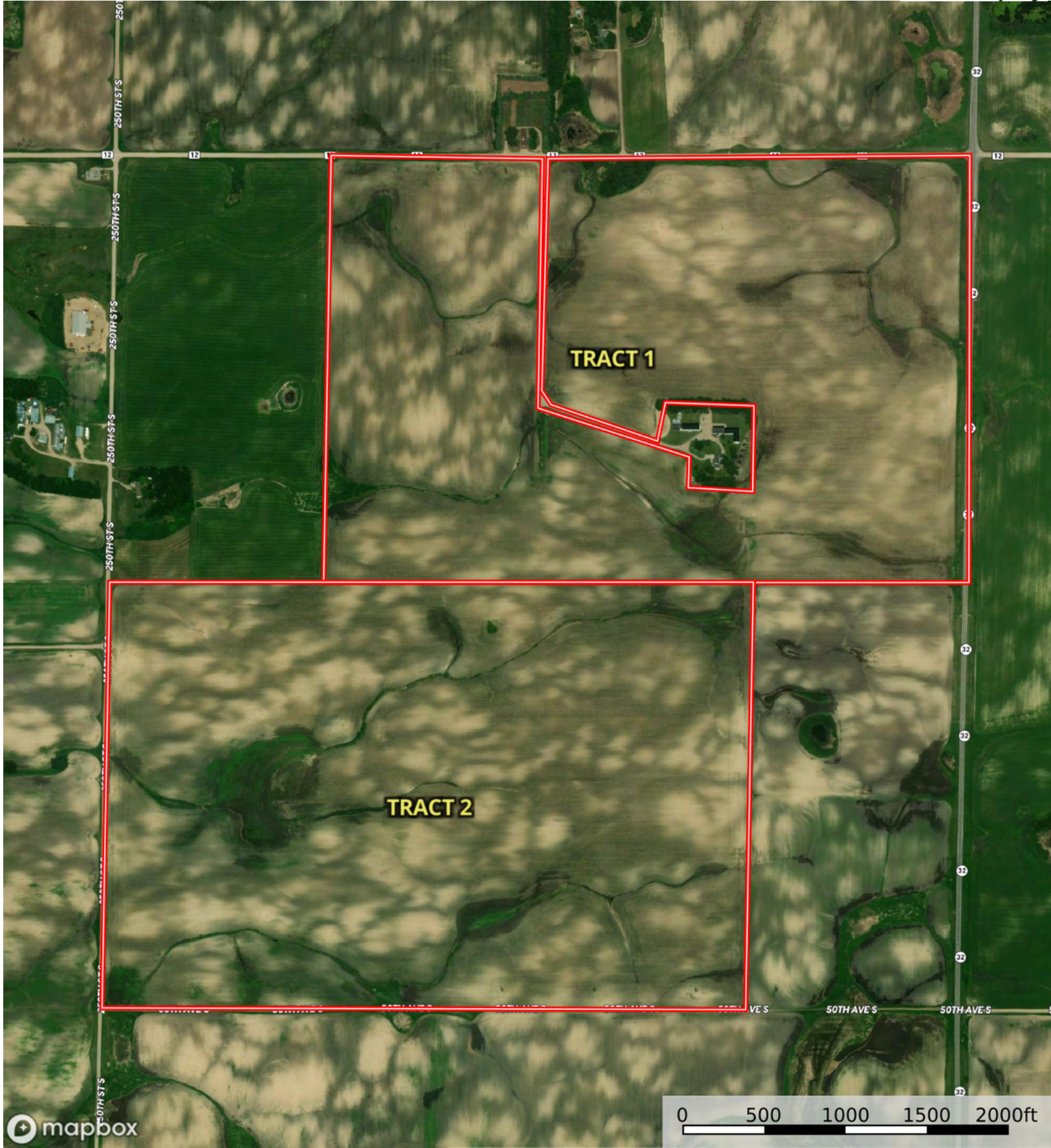


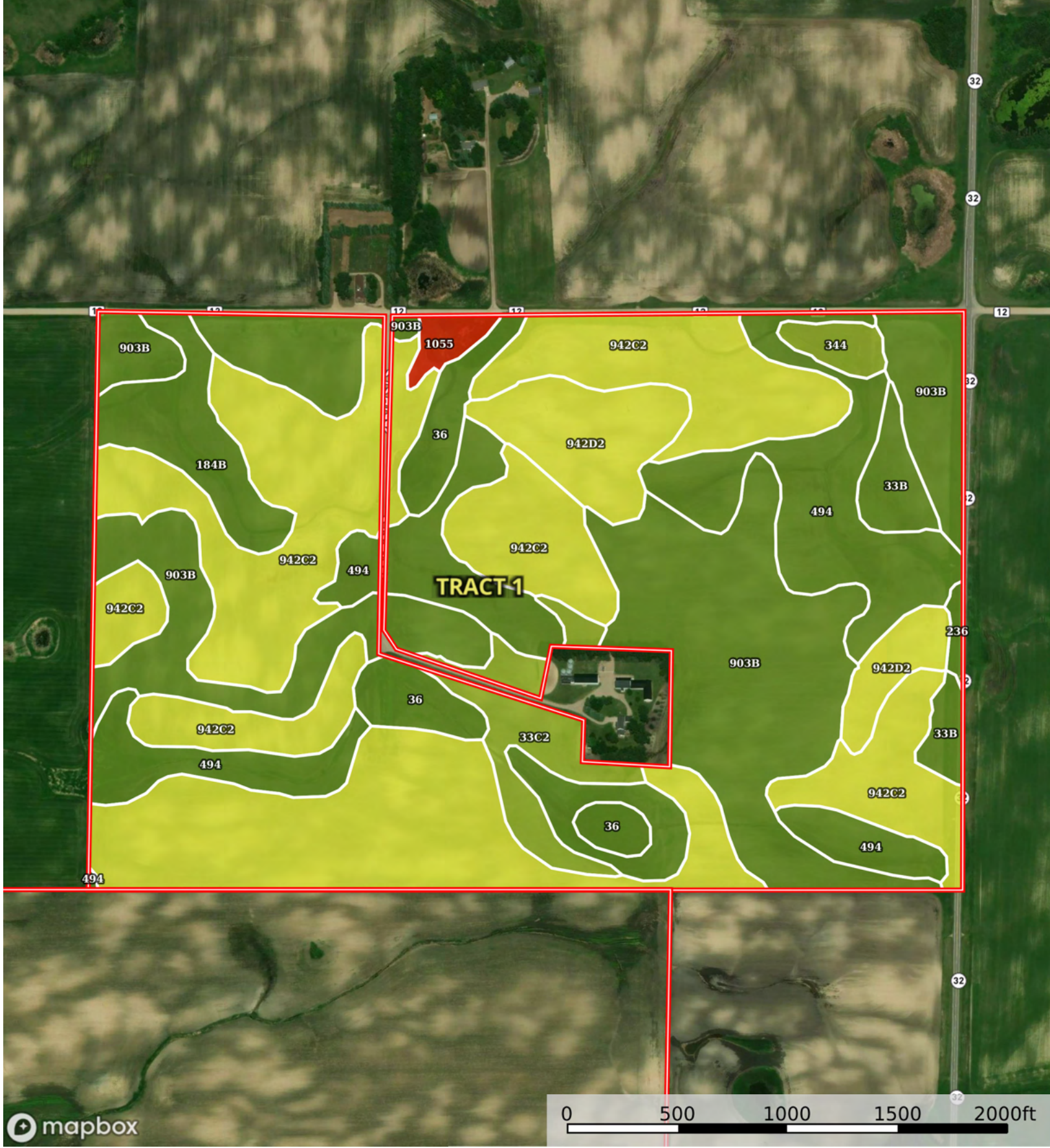
L-2500556
Clay County, Minnesota, 469.55 AC +/-



 Boundary



Boundary



Boundary

|  Boundary 231.46 ac

SOIL CODE	SOIL DESCRIPTION	ACRES	%	CPI	NCCPI	CAP
942C2	Langhei-Barnes, moderately eroded, complex, 6 to 12 percent slopes	89.31	38.59	74	58	4e
903B	Hokans-Buse complex, 2 to 6 percent slopes	56.97	24.61	89	65	2e
494	Darnen loam, 1 to 6 percent slopes	38.86	16.79	99	81	2e
942D2	Langhei-Barnes, moderately eroded, complex, 12 to 20 percent slopes	12.44	5.37	60	52	4e
36	Lakepark-Parnell, occasionally ponded, complex, 0 to 2 percent slopes	8.54	3.69	92	73	2w
184B	Balaton-Hamerly complex, 1 to 4 percent slopes	8.21	3.55	89	73	2s
33C2	Barnes-Buse complex, 6 to 12 percent slopes, moderately eroded	8.04	3.47	76	55	3e
33B	Hokans-Svea complex, 1 to 4 percent slopes	4.77	2.06	96	70	2e
344	Quam silty clay loam, occasionally ponded, 0 to 1 percent slopes	2.02	0.87	88	71	3w
1055	Quam, Cathro, and Urness soils, frequently ponded, 0 to 1 percent slopes	1.64	0.71	5	40	8w
236	Vallers clay loam, 0 to 2 percent slopes	0.66	0.29	90	76	2w
TOTALS		231.46(*)	100%	82.53	64.53	2.97









(*) Total acres may differ in the second decimal compared to the sum of each acreage soil. This is due to a round error because we only show the acres of each soil with two decimal.

Capability Legend

Increased Limitations and Hazards

Decreased Adaptability and Freedom of Choice Users

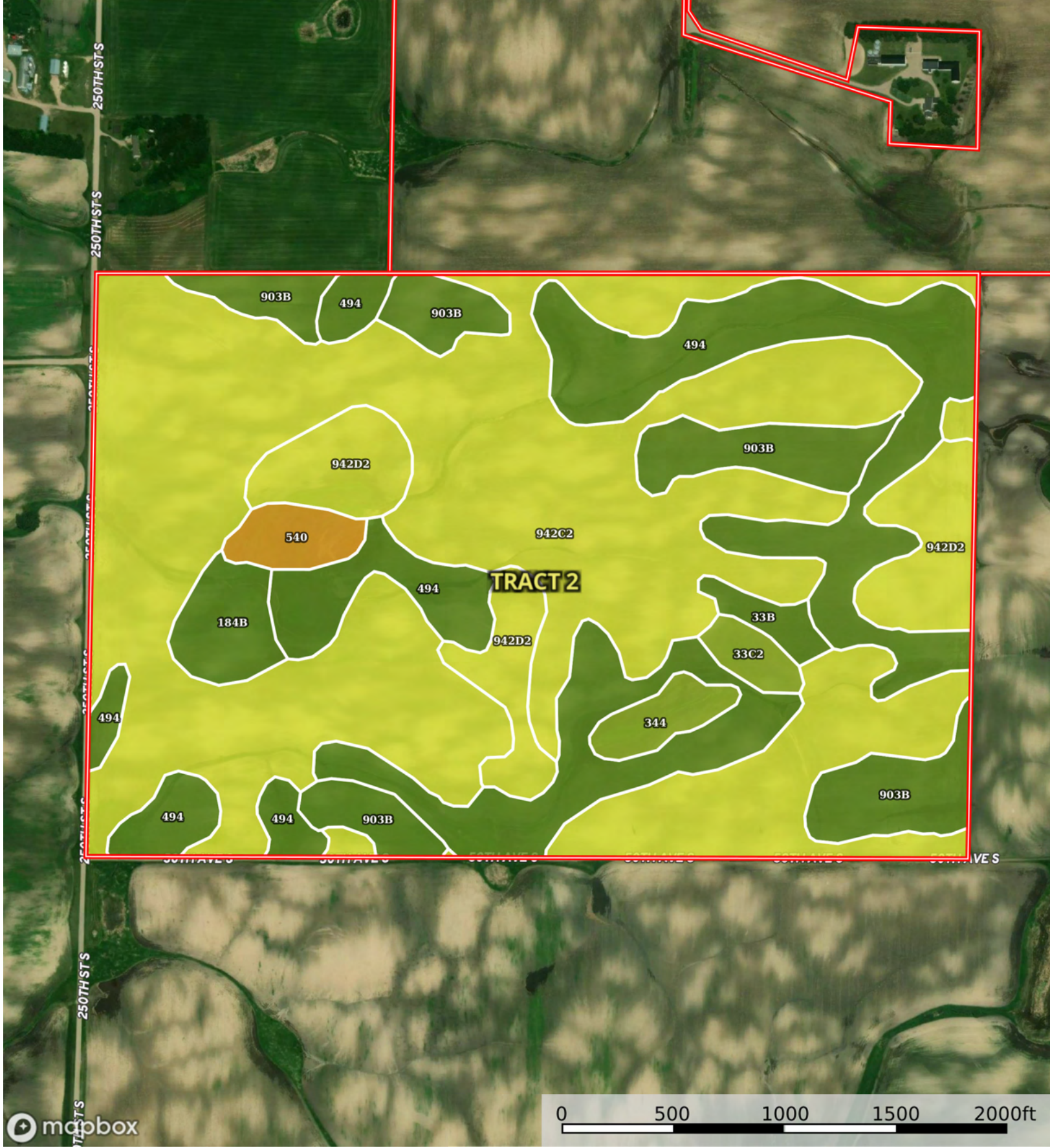
Land, Capability

								
	1	2	3	4	5	6	7	8
'Wild Life'	•	•	•	•	•	•	•	•
Forestry	•	•	•	•	•	•	•	
Limited	•	•	•	•	•	•	•	
Moderate	•	•	•	•	•	•		
Intense	•	•	•	•	•			
Limited	•	•	•	•				
Moderate	•	•	•					
Intense	•	•						
Very Intense	•							

Grazing Cultivation

(c) climatic limitations (e) susceptibility to erosion

(s) soil limitations within the rooting zone (w) excess of water



Boundary

|  Boundary 240.56 ac

SOIL CODE	SOIL DESCRIPTION	ACRES	%	CPI	NCCPI	CAP
942C2	Langhei-Barnes, moderately eroded, complex, 6 to 12 percent slopes	128.9	53.58	74	58	4e
494	Darnen loam, 1 to 6 percent slopes	55.13	22.92	99	81	2e
903B	Hokans-Buse complex, 2 to 6 percent slopes	21.62	8.99	89	65	2e
942D2	Langhei-Barnes, moderately eroded, complex, 12 to 20 percent slopes	19.1	7.94	60	52	4e
184B	Balaton-Hamerly complex, 1 to 4 percent slopes	4.95	2.06	89	73	2s
540	Seelyeville-Seelyeville, ponded, complex, 0 to 1 percent slopes	3.41	1.42	5	56	6w
344	Quam silty clay loam, occasionally ponded, 0 to 1 percent slopes	3.11	1.29	88	71	3w
33C2	Barnes-Buse complex, 6 to 12 percent slopes, moderately eroded	2.19	0.91	76	55	3e
33B	Hokans-Svea complex, 1 to 4 percent slopes	2.15	0.89	96	70	2e
TOTALS		240.56(*)	100%	79.69	63.95	3.31









(*) Total acres may differ in the second decimal compared to the sum of each acreage soil. This is due to a round error because we only show the acres of each soil with two decimal.

Capability Legend

Increased Limitations and Hazards

Decreased Adaptability and Freedom of Choice Users

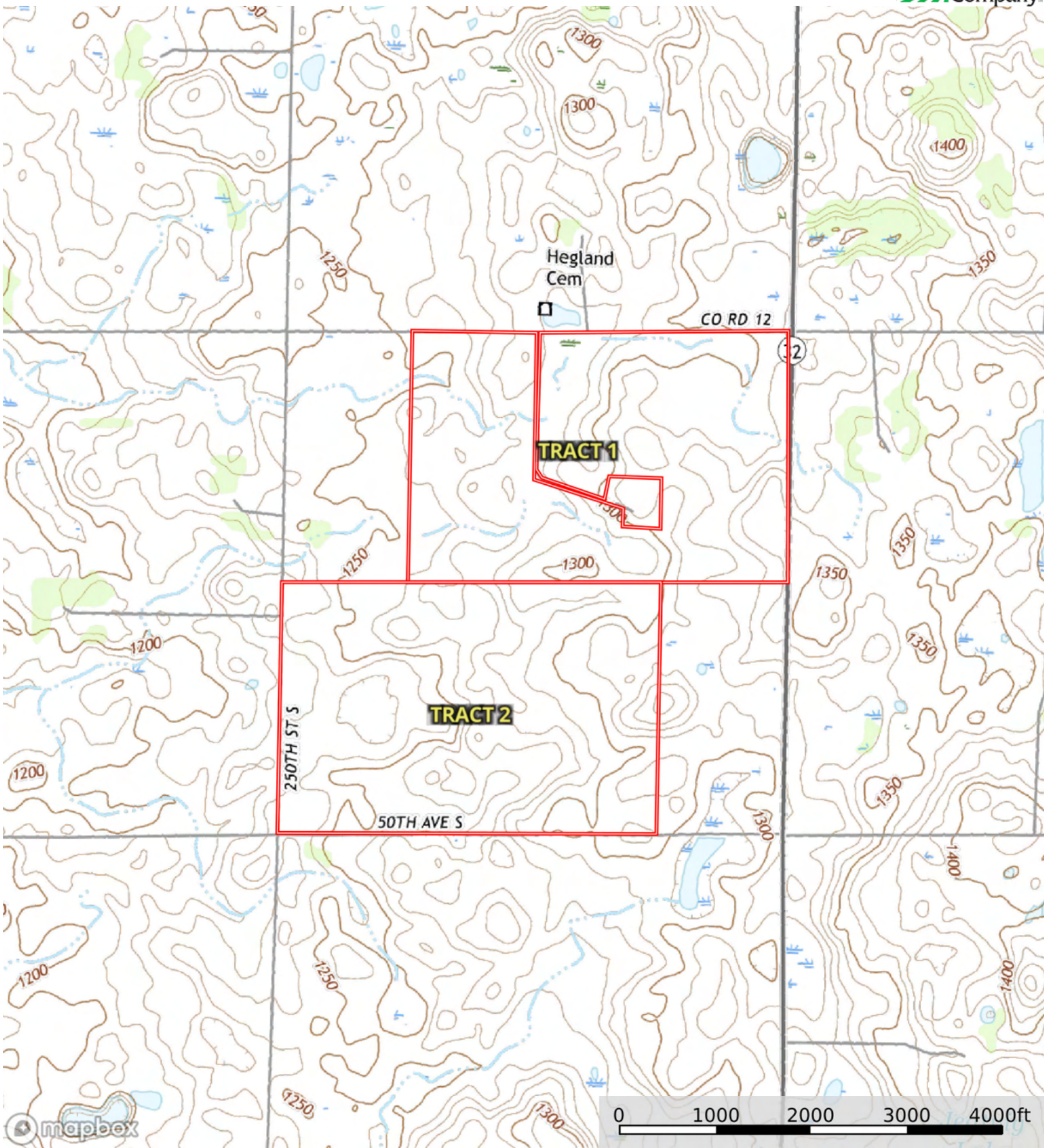
Land, Capability

								
	1	2	3	4	5	6	7	8
'Wild Life'	•	•	•	•	•	•	•	•
Forestry	•	•	•	•	•	•	•	
Limited	•	•	•	•	•	•	•	
Moderate	•	•	•	•	•	•		
Intense	•	•	•	•	•			
Limited	•	•	•	•				
Moderate	•	•	•					
Intense	•	•						
Very Intense	•							

Grazing Cultivation

(c) climatic limitations (e) susceptibility to erosion

(s) soil limitations within the rooting zone (w) excess of water



Boundary