

NEBRASKA

DAKOTA

Form: FSA-156EZ

See Page 2 for non-discriminatory Statements.


 United States Department of Agriculture  
 Farm Service Agency

## Abbreviated 156 Farm Record

FARM : 3037

Prepared : 9/18/25 1:47 PM CST

Crop Year : 2025

Operator Name : XXXXXXXXXX  
 CRP Contract Number(s) : XXXXXXXXXX  
 Recon ID : None  
 Transferred From : 2018-19-193-0007158  
 ARCPLC G/F Eligibility : Eligible

## Farm Land Data

Farmland	Cropland	DCP Cropland	WBP	EWP	WRP	GRP	Sugarcane	Farm Status	Number Of Tracts
142.30	114.84	114.84	0.00	0.00	0.00	0.00	0.0	Active	1
State Conservation	Other Conservation	Effective DCP Cropland		Double Cropped		CRP	MPL	DCP Ag.Rel. Activity	SOD
0.00	0.00	51.54		0.00		63.30	0.00	0.00	0.00

## Crop Election Choice

ARC Individual	ARC County	Price Loss Coverage
None	CORN	None

## DCP Crop Data

Crop Name	Base Acres	CCC-505 CRP Reduction Acres	PLC Yield	HIP
Corn	51.54	7.56	152	0
Soybeans	0.00	55.70	0	
<b>TOTAL</b>	<b>51.54</b>	<b>63.26</b>		

## NOTES

--

Tract Number : 2773

Description : NE NE, N SE 12-29-9E  
 FSA Physical Location : NEBRASKA/DAKOTA  
 ANSI Physical Location : NEBRASKA/DAKOTA  
 BIA Unit Range Number :  
 HEL Status : NHEL: No agricultural commodity planted on undetermined fields  
 Wetland Status : Wetland determinations not complete  
 WL Violations : None  
 Owners : TEBBEN HANSEN FARM LLC  
 Other Producers : None  
 Recon ID : None

## Tract Land Data

Farm Land	Cropland	DCP Cropland	WBP	EWP	WRP	GRP	Sugarcane
142.30	114.84	114.84	0.00	0.00	0.00	0.00	0.0

NEBRASKA  
DAKOTA  
Form: FSA-156EZ



United States Department of Agriculture  
Farm Service Agency

Abbreviated 156 Farm Record

FARM : 3037  
Prepared : 9/18/25 1:47 PM CST  
Crop Year : 2025

Tract 2773 Continued ...

State Conservation	Other Conservation	Effective DCP Cropland	Double Cropped	CRP	MPL	DCP Ag. Rel Activity	SOD
0.00	0.00	51.54	0.00	63.30	0.00	0.00	0.00

DCP Crop Data

Crop Name	Base Acres	CCC-505 CRP Reduction Acres	PLC Yield
Corn	51.54	7.56	152
Soybeans	0.00	55.70	0
<b>TOTAL</b>	<b>51.54</b>	<b>63.26</b>	

NOTES

In accordance with Federal civil rights law and U.S. Department of Agriculture (USDA) civil rights regulations and policies, the USDA, its Agencies, offices, and employees, and institutions participating in or administering USDA programs are prohibited from discriminating based on race, color, national origin, religion, sex, disability, age, marital status, family/parental status, income derived from a public assistance program, political beliefs, or reprisal or retaliation for prior civil rights activity, in any program or activity conducted or funded by USDA (not all bases apply to all programs). Remedies and complaint filing deadlines vary by program or incident.

Persons with disabilities who require alternative means of communication for program information (e.g., Braille, large print, audiotape, American Sign Language, etc.) should contact the responsible Agency or USDA's TARGET Center at (202) 720-2600 (voice and TTY) or contact USDA through the Federal Relay Service at (800) 877-8339. Additionally, program information may be made available in languages other than English.

To file a program discrimination complaint, complete the USDA Program Discrimination Complaint Form, AD-3027, found online at [How to File a Program Discrimination Complaint](#) and at any USDA office or write a letter addressed to USDA and provide in the letter all of the information requested in the form. To request a copy of the complaint form, call (866) 632-9992. Submit your completed form or letter to USDA by: (1) Mail: U.S. Department of Agriculture Office of the Assistant Secretary for Civil Rights, 1400 Independence Avenue, SW Washington, D.C. 20250-9410; (2) Fax: (202) 690-7442; or (3) Email: [program.intake@usda.gov](mailto:program.intake@usda.gov). USDA is an equal opportunity provider, employer, and lender.





United States  
Department of  
Agriculture

## Dakota County, Nebraska



### Common Land Unit

- Non-Cropland
- Cropland

- CRP
- Tract Boundary
- PLSS

### Wetland Determination

- Restricted Use
- Limited Restrictions
- Exempt from Wetland

### 2024 EAWS Production Ortho Imagery

Alternate year NAIP imagery may be displayed for tracts physically located in other states, along state borders, or years of partial imagery acquisition.

Tract Cropland Total: 114.84 acres

2025 Program Year

Map Created February 26, 2025

Farm **3037**  
Tract **2773**

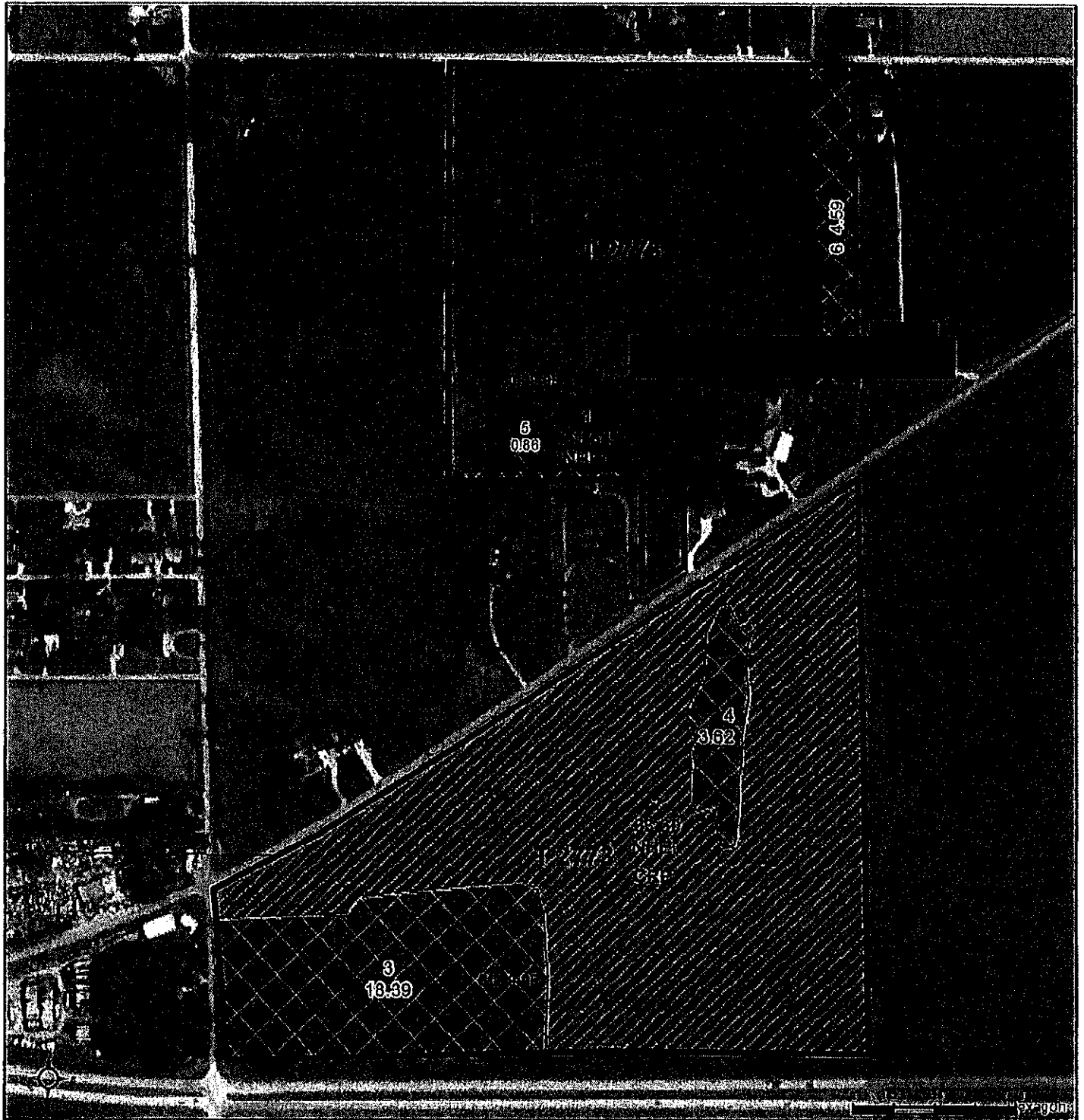
United States Department of Agriculture (USDA) Farm Service Agency (FSA) maps are for FSA Program administration only. This map does not represent a legal survey or reflect actual ownership; rather it depicts the information provided directly from the producer and/or National Agricultural Imagery Program (NAIP) imagery. The producer accepts the data 'as is' and assumes all risks associated with its use. USDA-FSA assumes no responsibility for actual or consequential damage incurred as a result of any user's reliance on this data outside FSA Programs. Wetland identifiers do not represent the size, shape, or specific determination of the area. Refer to your original determination (CPA-026 and attached maps) for exact boundaries and determinations or contact USDA Natural Resources Conservation Service (NRCS).





United States  
Department of  
Agriculture

## Dakota County, Nebraska



### Common Land Unit

Non-Cropland  
Cropland

CRP

Tract Boundary  
PLSS

### Wetland Determination

- Restricted Use
- ▽ Limited Restrictions
- Exempt from Wetland

### 2024 EAWS Production Ortho Imagery

Alternate year NAIP Imagery may be displayed for tracts physically located in other states, along state borders, or years of partial imagery acquisition.

**Tract Cropland Total: 114.84 acres**

**2025 Program Year**

Map Created February 26, 2025

**Farm 3037**

**Tract 2773**

United States Department of Agriculture (USDA) Farm Service Agency (FSA) maps are for FSA Program administration only. This map does not represent a legal survey or reflect actual ownership; rather it depicts the information provided directly from the producer and/or National Agricultural Imagery Program (NAIP) Imagery. The producer accepts the data 'as is' and assumes all risks associated with its use. USDA-FSA assumes no responsibility for actual or consequential damage incurred as a result of any user's reliance on this data outside FSA Programs. Wetland identifiers do not represent the size, shape, or specific determination of the area. Refer to your original determination (CPA-026 and attached maps) for exact boundaries and determinations or contact USDA Natural Resources Conservation Service (NRCS).