 Boundary



Boundary



Boundary

|  Boundary 57.36 ac

SOIL CODE	SOIL DESCRIPTION	ACRES	%	CPI	NCCPI	CAP
7741	Haynie silt loam, 0 to 2 percent slopes, occasionally flooded	41.1	71.64	0	84	2w
7710	Albaton silty clay, 0 to 2 percent slopes, occasionally flooded	11.36	19.8	0	49	3w
7083	Sarpy loamy fine sand, occasionally flooded	3.53	6.15	0	25	4s
7880	Onawa silty clay, occasionally flooded	1.35	2.35	0	57	2w
7704	Grable very fine sandy loam, occasionally flooded	0.02	0.03	0	44	2s
TOTALS		57.36(*)	100%	-	72.78	2.32









(\*) Total acres may differ in the second decimal compared to the sum of each acreage soil. This is due to a round error because we only show the acres of each soil with two decimal.

## Capability Legend

Increased Limitations and Hazards

Decreased Adaptability and Freedom of Choice Users

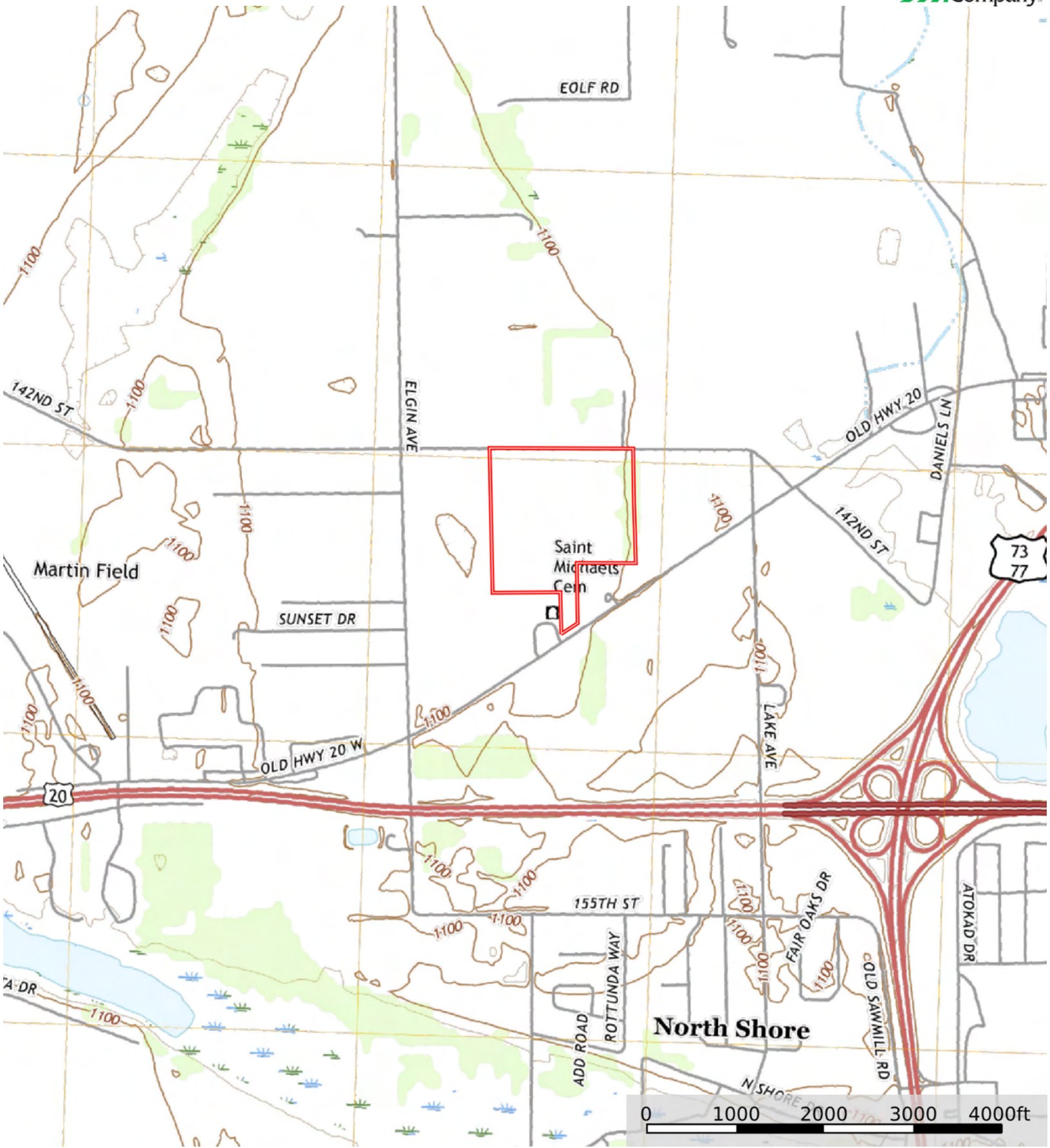
Land, Capability

								
	1	2	3	4	5	6	7	8
'Wild Life'	•	•	•	•	•	•	•	•
Forestry	•	•	•	•	•	•	•	
Limited	•	•	•	•	•	•	•	
Moderate	•	•	•	•	•	•		
Intense	•	•	•	•	•			
Limited	•	•	•	•				
Moderate	•	•	•					
Intense	•	•						
Very Intense	•							

## Grazing Cultivation

(c) climatic limitations (e) susceptibility to erosion

(s) soil limitations within the rooting zone (w) excess of water



Boundary