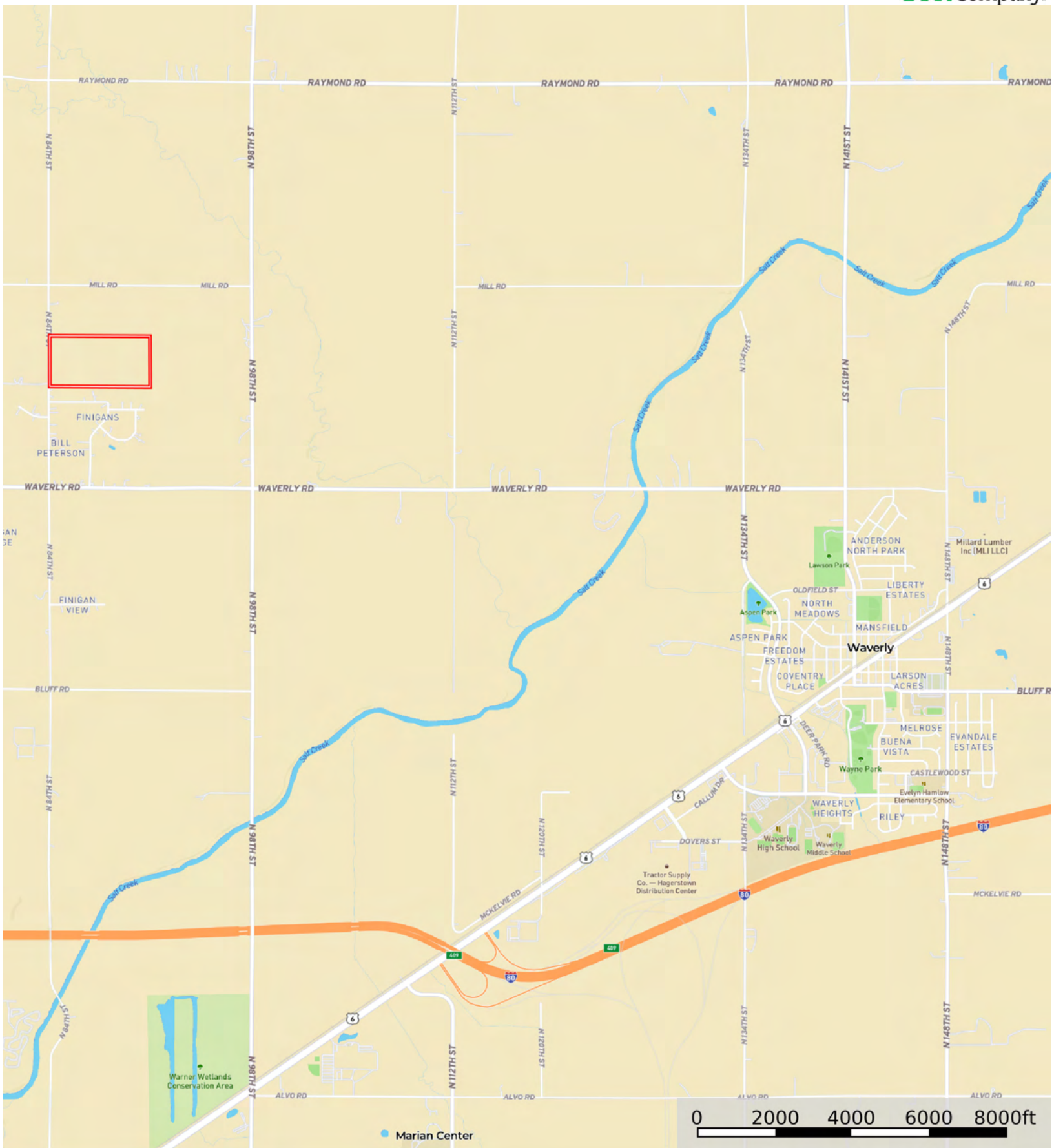


L-2500603

Lancaster County, Nebraska, 79.04 AC +/-



Boundary

L-2500603

Lancaster County, Nebraska, 79.04 AC +/-



 Boundary

L-2500603

Lancaster County, Nebraska, 79.04 AC +/-



 Boundary

Boundary 78.94 ac

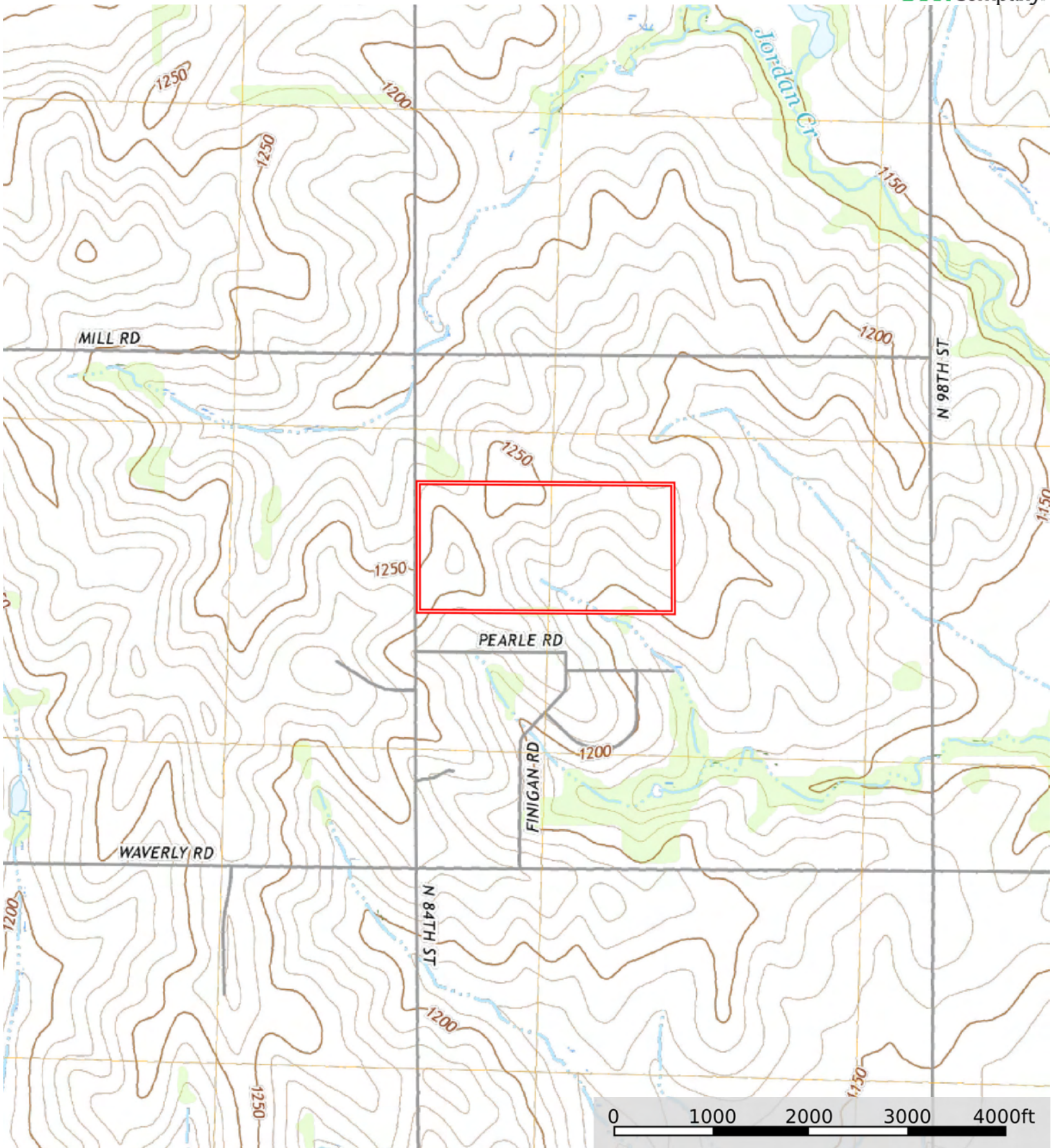
SOIL CODE	SOIL DESCRIPTION	ACRES	%	CPI	NCCPI	CAP
7644	Yutan silty clay loam, 6 to 11 percent slopes, eroded	30.72	38.92	0	59	3e
7206	Aksarben silty clay loam, 2 to 6 percent slopes	24.66	31.24	0	66	2e
7207	Aksarben silty clay loam, 6 to 11 percent slopes	23.56	29.85	0	65	3e
TOTALS		78.94(*)	100%	-	62.99	2.69


(\*) Total acres may differ in the second decimal compared to the sum of each acreage soil. This is due to a round error because we only show the acres of each soil with two decimal.



L-2500603

Lancaster County, Nebraska, 79.04 AC +/-



 Boundary