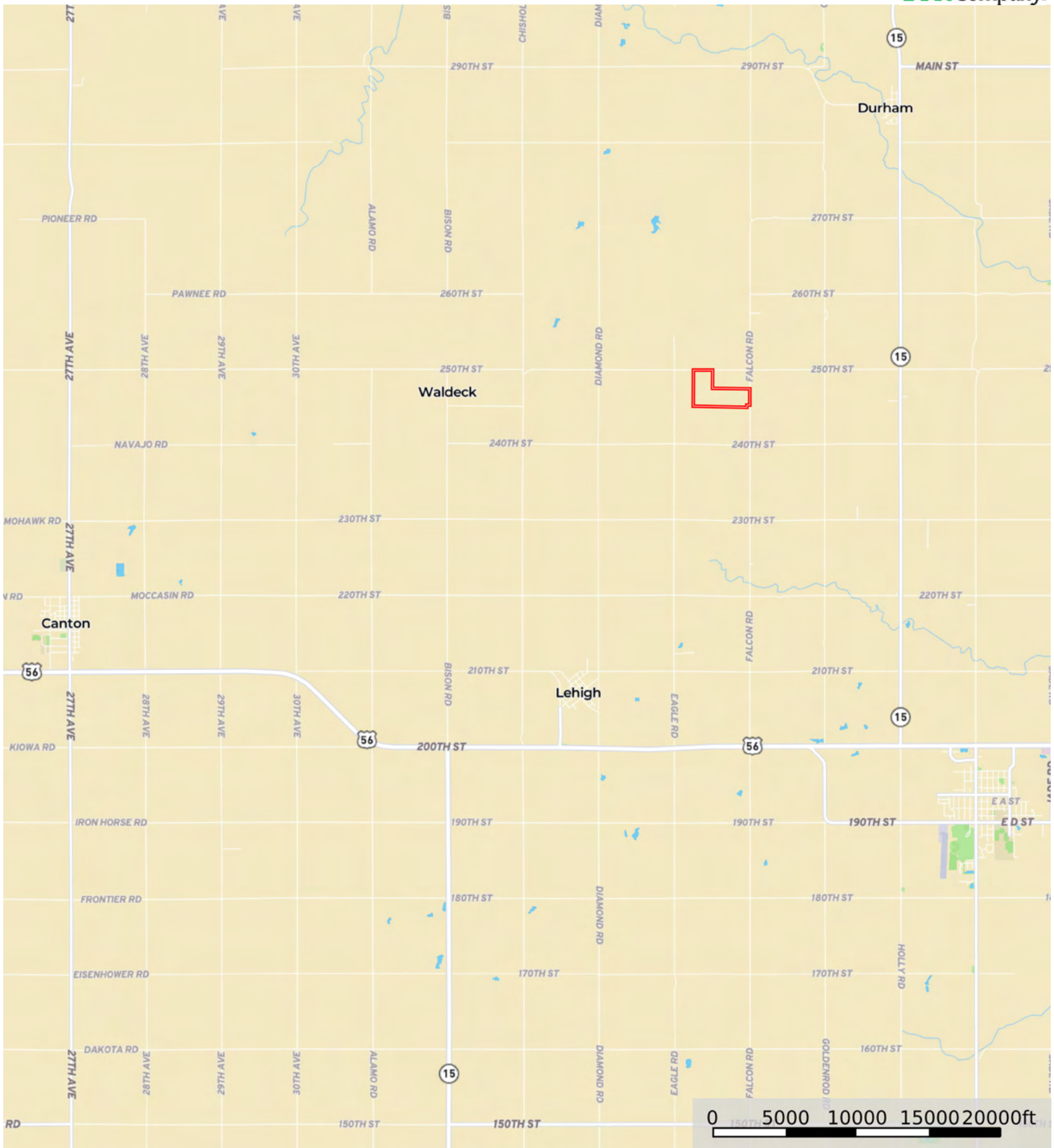


L-2600051

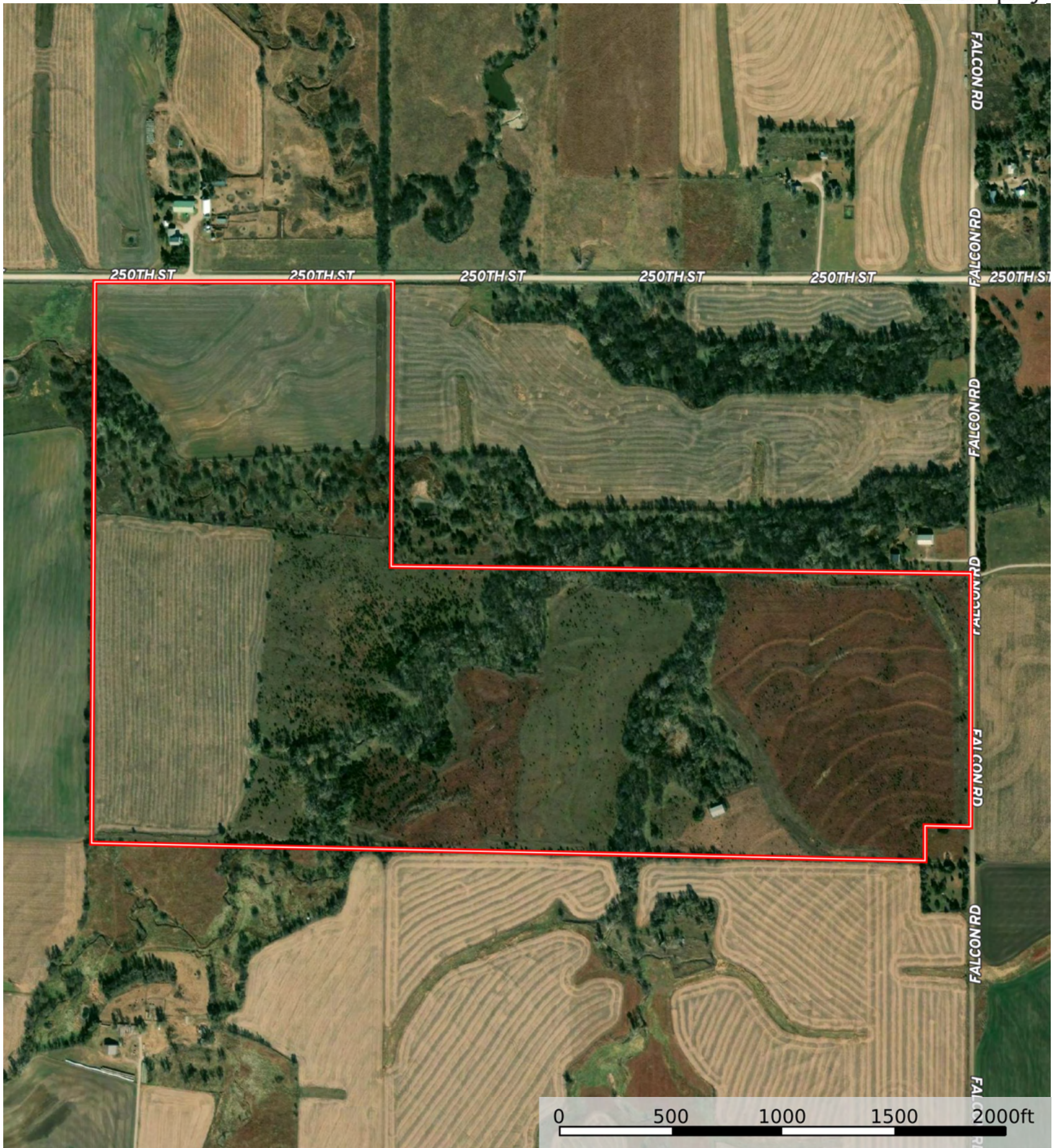
Marion County, Kansas, 154.28 AC +/-



 Boundary

L-2600051

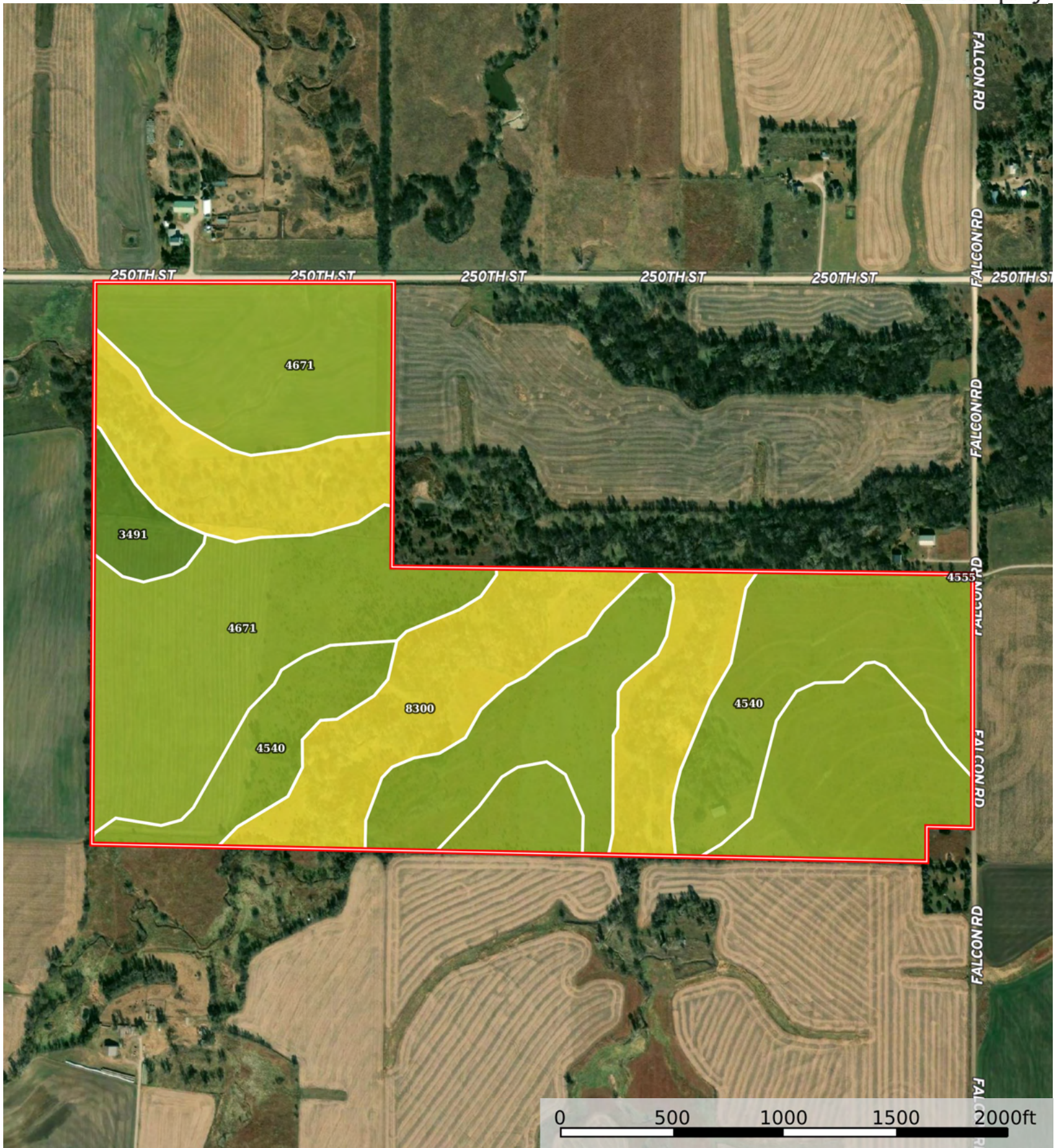
Marion County, Kansas, 154.28 AC +/-



 Boundary

L-2600051

Marion County, Kansas, 154.28 AC +/-



Boundary

Boundary 154.14 ac

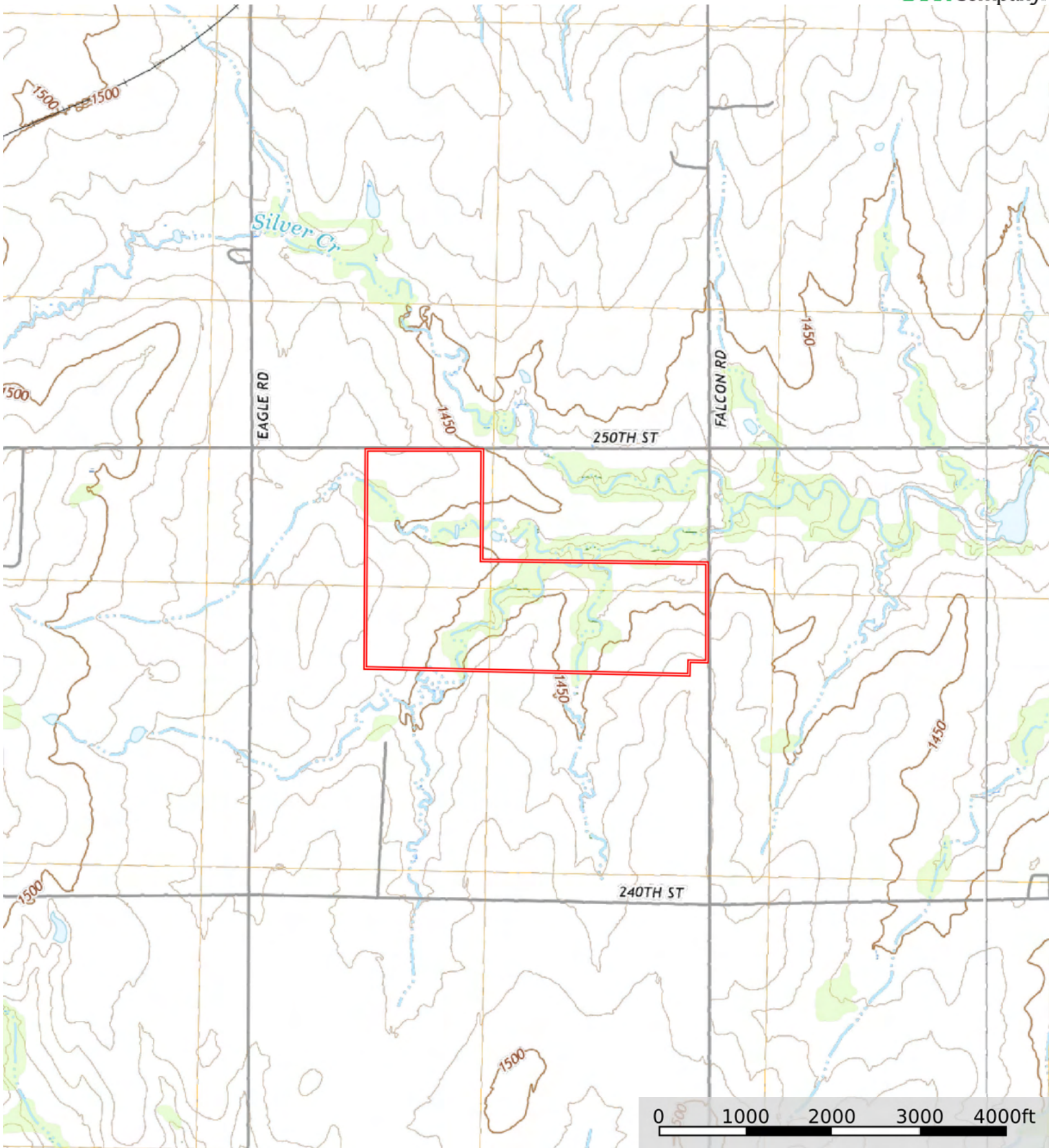
SOIL CODE	SOIL DESCRIPTION	ACRES	%	CPI	NCCPI	CAP
4671	Irwin silty clay loam, 1 to 3 percent slopes	66.85	43.37	0	57	3s
4540	Clime silty clay loam, 1 to 3 percent slopes	43.1	27.96	0	41	3e
8300	Verdigris silt loam, channeled, 0 to 2 percent slopes, frequently flooded	40.06	25.99	0	46	5w
3491	Wells loam, 1 to 3 percent slopes	4.07	2.64	0	68	2e
4555	Clime silty clay loam, 3 to 7 percent slopes	0.06	0.04	0	43	3e
TOTALS		154.14(*)	100%	-	49.95	3.49

(*) Total acres may differ in the second decimal compared to the sum of each acreage soil. This is due to a round error because we only show the acres of each soil with two decimal.



L-2600051

Marion County, Kansas, 154.28 AC +/-



 Boundary