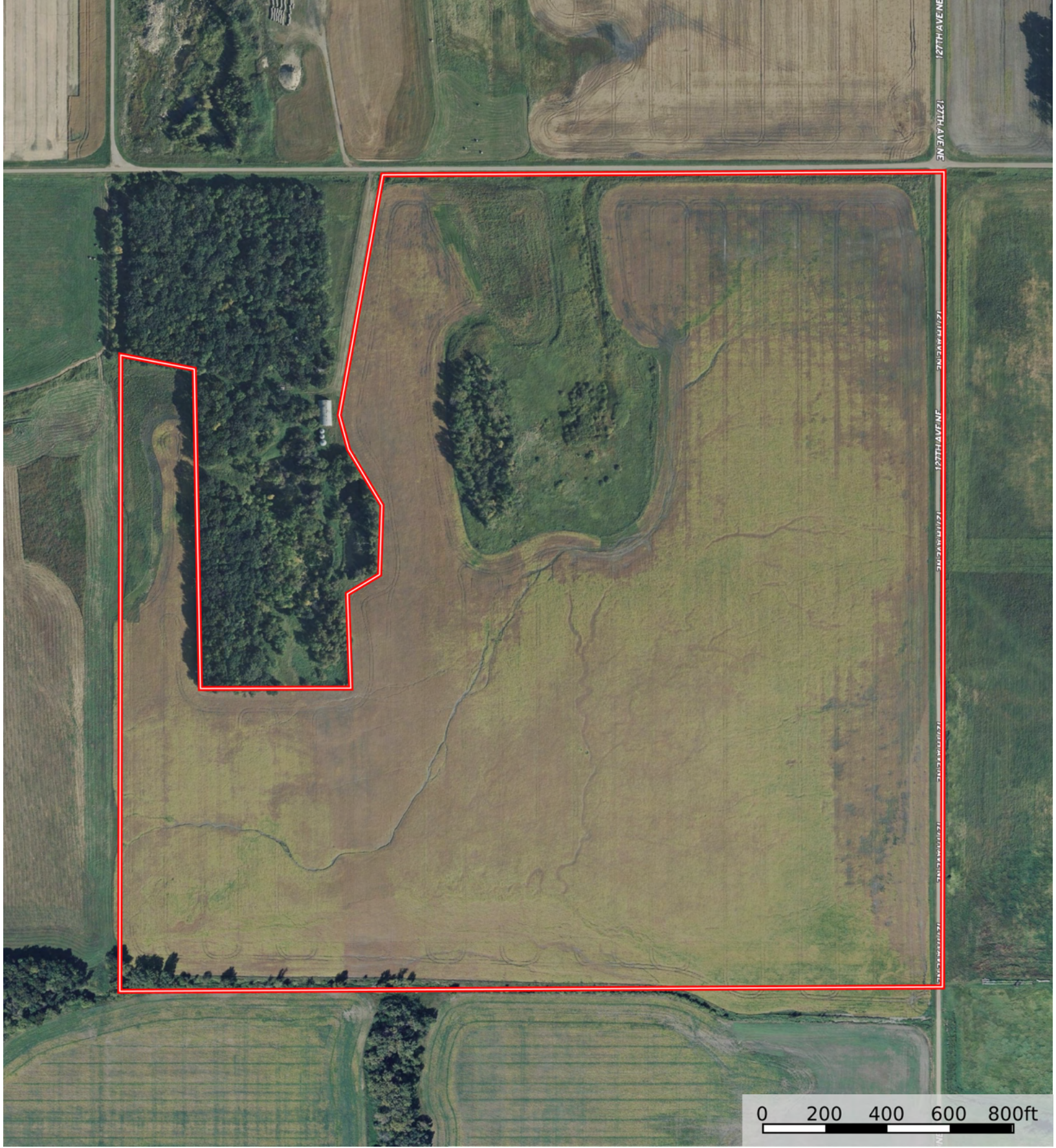
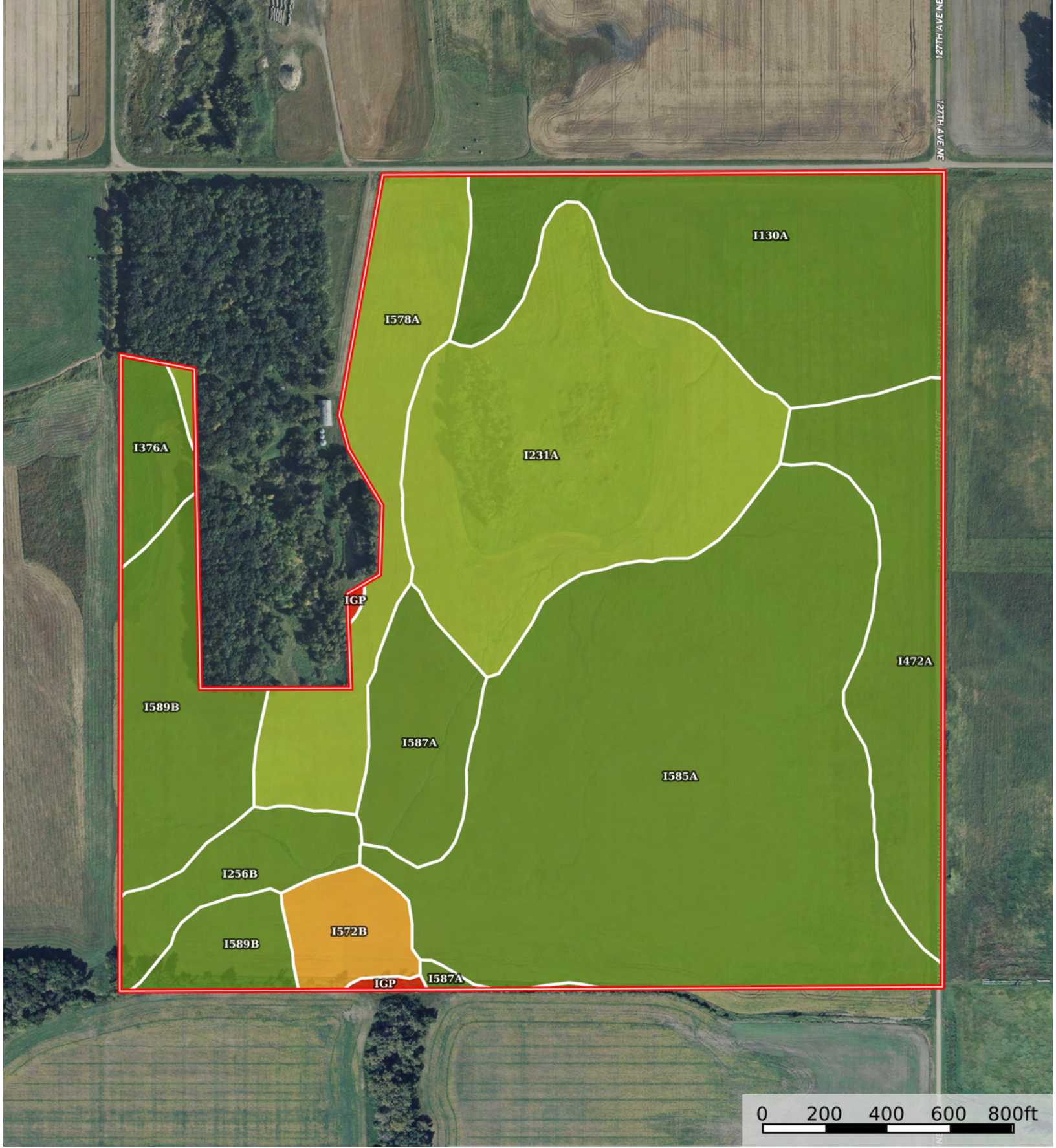


Boundary



Boundary



Boundary

|  Boundary 135.04 ac

SOIL CODE	SOIL DESCRIPTION	ACRES	%	CPI	NCCPI	CAP
I585A	Fairdale silty clay loam, 0 to 2 percent slopes, occasionally flooded	43.92	32.52	82	82	2c
I231A	Dovray silty clay, 0 to 1 percent slopes	23.71	17.56	64	38	3w
I130A	Hegne-Fargo silty clays, 0 to 1 percent slopes	18.43	13.65	83	56	2w
I589B	Olga silty clay loam, 3 to 6 percent slopes	11.09	8.21	74	53	2e
I472A	Perella silty clay loam, 0 to 1 percent slopes	10.85	8.03	88	54	2w
I578A	Brantford loam, 0 to 2 percent slopes	10.8	8.0	52	45	3s
I587A	Rolette clay loam, 0 to 3 percent slopes	6.0	4.44	87	56	2s
I256B	La Prairie-Fluvaquents, channeled complex, 0 to 6 percent slopes, frequently flooded	4.1	3.04	60	30	2c
I572B	Corliss loamy coarse sand, 2 to 6 percent slopes	3.09	2.29	24	26	6e
I376A	Colvin silty clay loam, 0 to 1 percent slopes	2.73	2.02	69	50	2w
IGp	Pits, gravel and sand	0.32	0.24	3	-	8s
TOTALS		135.04 <sup>(*)</sup>	100%	74.18	58.28	2.36









(\*) Total acres may differ in the second decimal compared to the sum of each acreage soil. This is due to a round error because we only show the acres of each soil with two decimal.

## Capability Legend

Increased Limitations and Hazards

Decreased Adaptability and Freedom of Choice Users

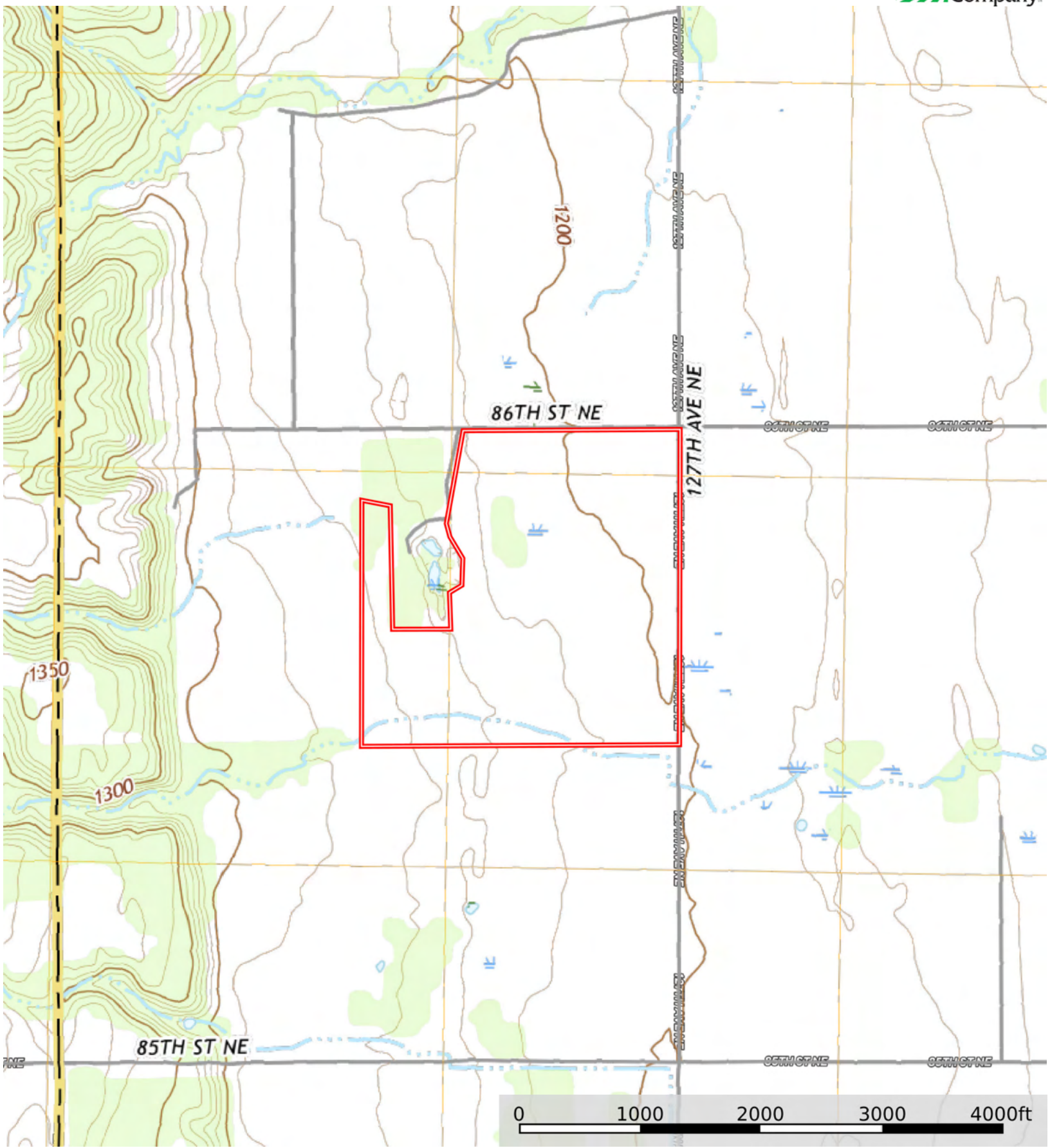
Land, Capability

								
	1	2	3	4	5	6	7	8
'Wild Life'	•	•	•	•	•	•	•	•
Forestry	•	•	•	•	•	•	•	
Limited	•	•	•	•	•	•	•	
Moderate	•	•	•	•	•	•		
Intense	•	•	•	•	•			
Limited	•	•	•	•				
Moderate	•	•	•					
Intense	•	•						
Very Intense	•							

## Grazing Cultivation

(c) climatic limitations (e) susceptibility to erosion

(s) soil limitations within the rooting zone (w) excess of water



Boundary