

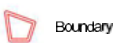
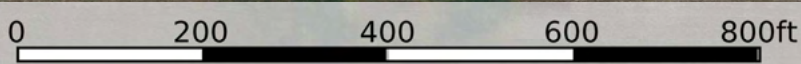
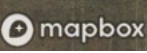
Boundary

L-2600117

Burt County, Thurston County, Nebraska, 148.86 AC +/-



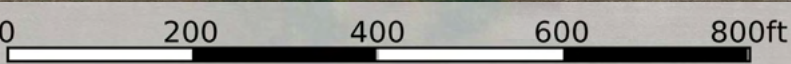
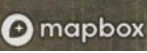
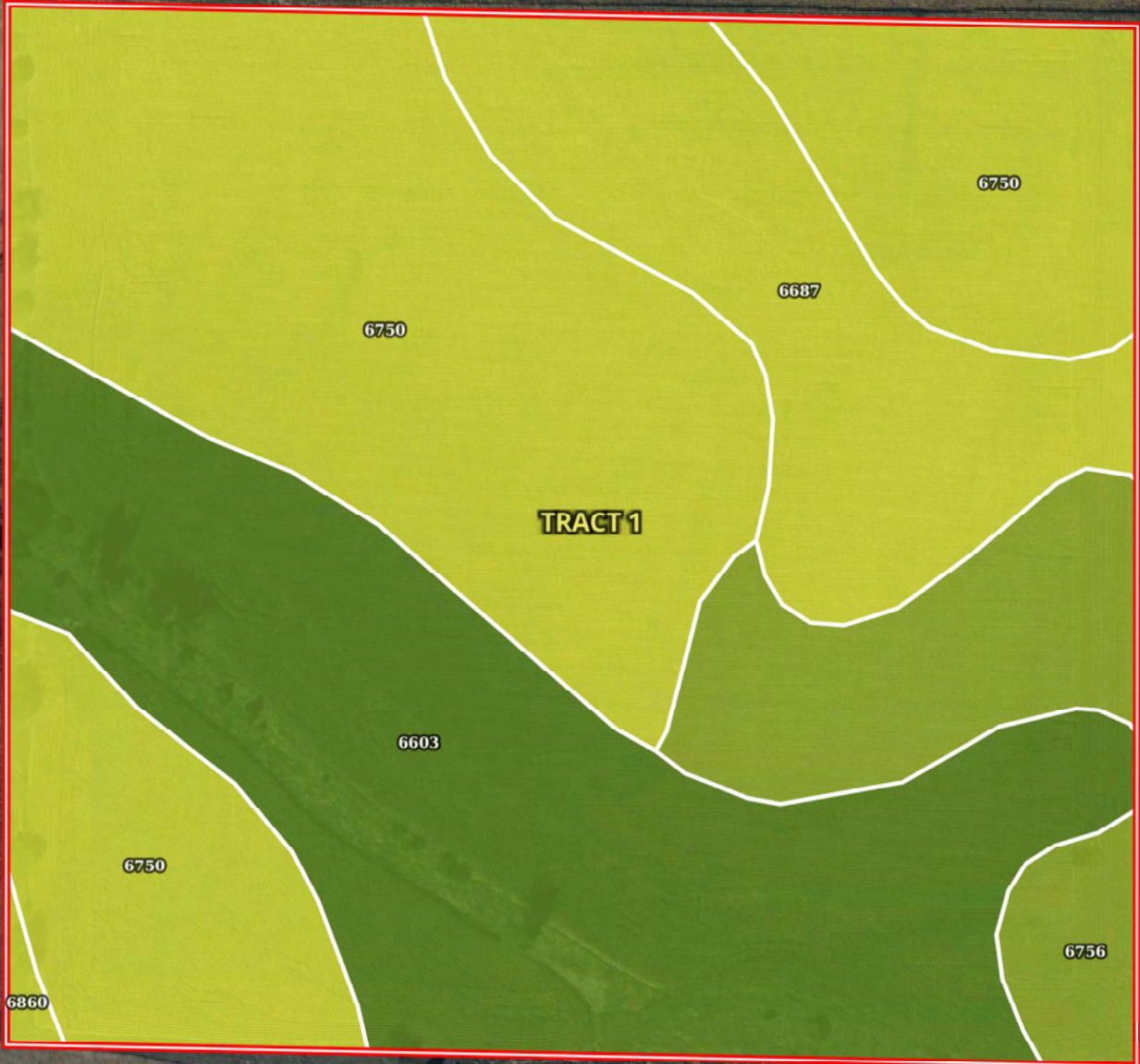
TRACT 1



Boundary

L-2600117

Burt County, Thurston County, Nebraska, 148.86 AC +/-



Boundary

|  Boundary 36.89 ac

SOIL CODE	SOIL DESCRIPTION	ACRES	%	CPI	NCCPI	CAP
6750	Nora silt loam, 11 to 17 percent slopes, eroded	16.44	44.56	48	63	4e
6603	Alcester silty clay loam, 2 to 6 percent slopes	11.24	30.47	91	76	2e
6687	Crofton silt loam, 6 to 11 percent slopes, eroded	5.27	14.29	0	67	4e
6756	Nora silt loam, 6 to 11 percent slopes, eroded	3.79	10.27	52	67	3e
6860	Crofton silt loam, 8 to 17 percent slopes, eroded	0.15	0.41	0	56	4e
TOTALS		36.89(*)	100%	54.46	67.91	3.29

(*) Total acres may differ in the second decimal compared to the sum of each acreage soil. This is due to a round error because we only show the acres of each soil with two decimal.

Capability Legend

Increased Limitations and Hazards

Decreased Adaptability and Freedom of Choice Users

Land, Capability

								
	1	2	3	4	5	6	7	8
'Wild Life'	•	•	•	•	•	•	•	•
Forestry	•	•	•	•	•	•	•	
Limited	•	•	•	•	•	•	•	
Moderate	•	•	•	•	•	•		
Intense	•	•	•	•	•			
Limited	•	•	•	•				
Moderate	•	•	•					
Intense	•	•						
Very Intense	•							

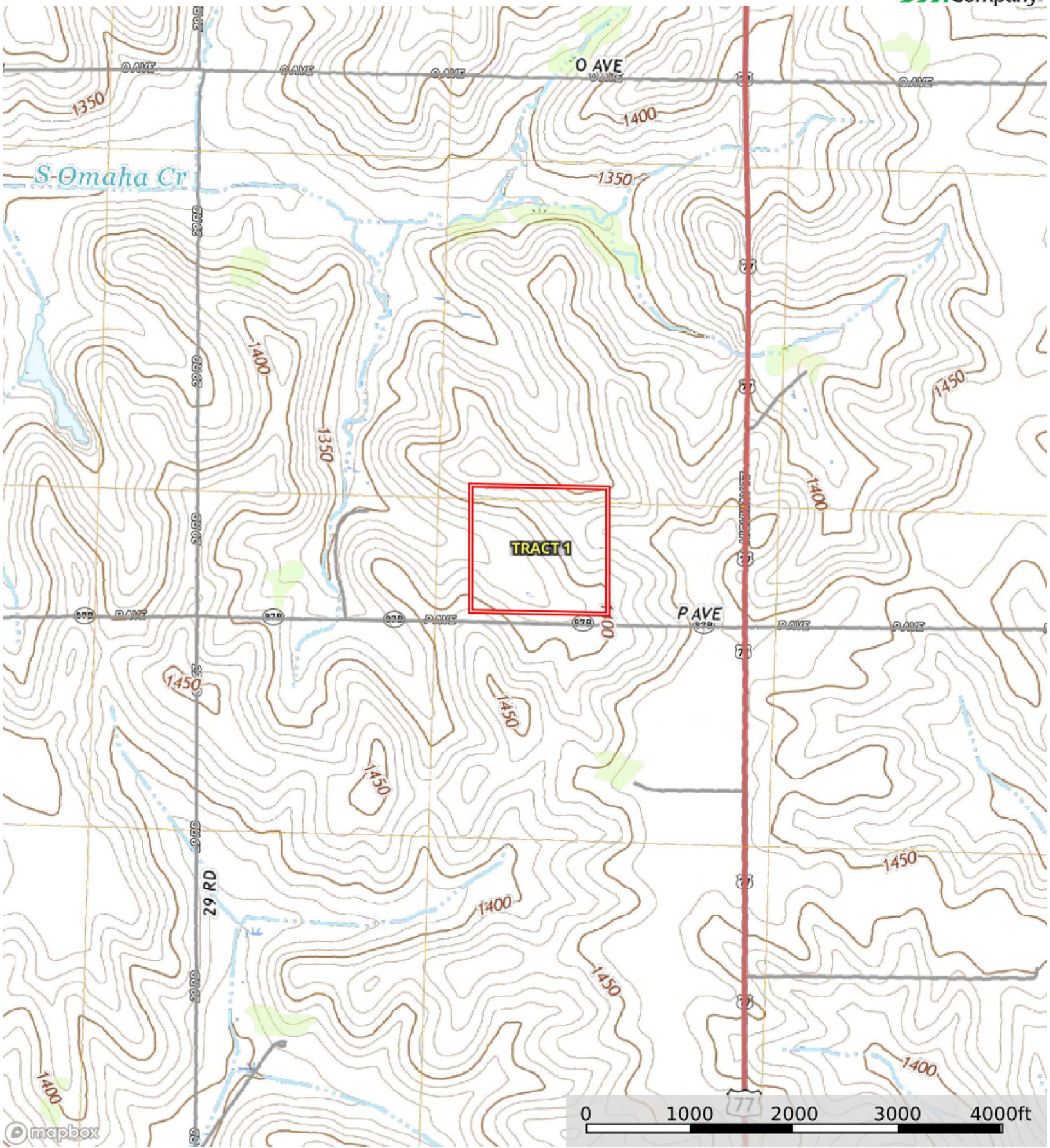
Grazing Cultivation

(c) climatic limitations (e) susceptibility to erosion

(s) soil limitations within the rooting zone (w) excess of water

L-2600117

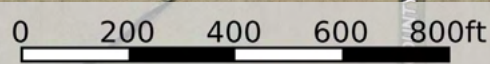
Burt County, Thurston County, Nebraska, 148.86 AC +/-



Boundary

L-2600117

Burt County, Thurston County, Nebraska, 148.86 AC +/-



Boundary

L-2600117

Burt County, Thurston County, Nebraska, 148.86 AC +/-



Boundary

|  Boundary 109.33 ac

SOIL CODE	SOIL DESCRIPTION	ACRES	%	CPI	NCCPI	CAP
6603	Alcester silty clay loam, 2 to 6 percent slopes	31.46	28.77	91	76	2e
6756	Nora silt loam, 6 to 11 percent slopes, eroded	23.9	21.86	52	67	3e
6811	Moody silty clay loam, 2 to 6 percent slopes	22.63	20.7	67	75	2e
6814	Moody silty clay loam, 6 to 11 percent slopes, eroded	17.43	15.94	0	63	3e
6812	Moody silty clay loam, 2 to 6 percent slopes, eroded	7.62	6.97	0	64	2e
6401	Calco silty clay loam, 0 to 2 percent slopes, occasionally flooded	6.29	5.75	0	80	2w
TOTALS		109.33(*)	100%	51.42	71.14	2.38








(*) Total acres may differ in the second decimal compared to the sum of each acreage soil. This is due to a round error because we only show the acres of each soil with two decimal.

Capability Legend

Increased Limitations and Hazards

Decreased Adaptability and Freedom of Choice Users

Land, Capability

								
	1	2	3	4	5	6	7	8
'Wild Life'	•	•	•	•	•	•	•	•
Forestry	•	•	•	•	•	•	•	
Limited	•	•	•	•	•	•	•	
Moderate	•	•	•	•	•	•		
Intense	•	•	•	•	•			
Limited	•	•	•	•				
Moderate	•	•	•					
Intense	•	•						
Very Intense	•							

Grazing Cultivation

(c) climatic limitations (e) susceptibility to erosion

(s) soil limitations within the rooting zone (w) excess of water

Burt County, Thurston County, Nebraska, 148.86 AC +/-

