

SCAN THE QR CODE
FOR MORE INFO!



LAND FOR SALE

112.8± Acres, Humboldt County, Iowa

OFFERED AT
\$10,904 per acre

Highlights:

- High quality, well-drained cropland!
- Full possession available for the 2026 growing season
- Located east of Humboldt, Iowa in Section 31 of Lake Township



For additional information, please contact:
Thad Naeve, Agent | (515) 368-0773
TNaeve@FarmersNational.com



Kyle Larsen, Agent | (515) 890-1260
KLarsen@FarmersNational.com

Property Information

Directions to Property: Seven miles east of Humboldt, Iowa on the north side of US Highway 3.

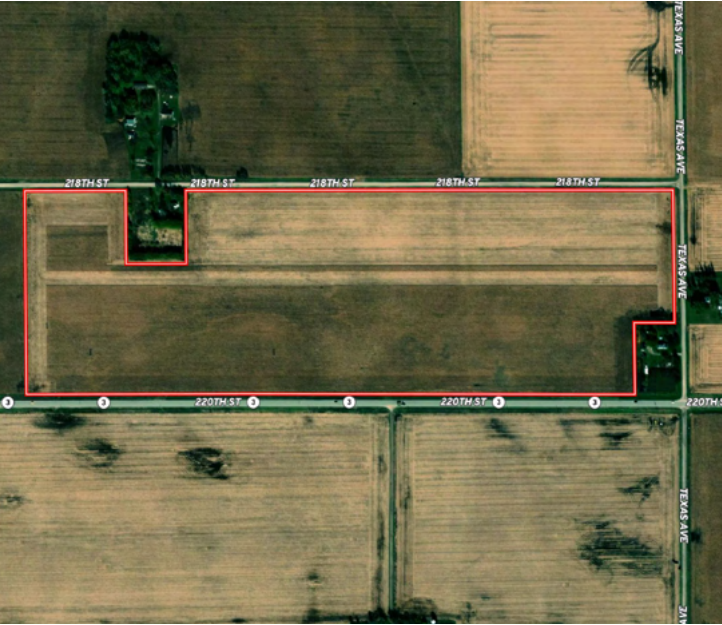
Legal Description: The South Half of the Southeast Quarter and the Southeast Quarter of the Southwest Quarter except two parcels in Section 31, Township 92 North, Range 27 West of the 5th P.M., Humboldt County, Iowa.

Taxes: \$3,792.00

Property Description: 104.59 acres of highly productive cropland with a CSR2 of 76.7 located seven miles east of Humboldt, Iowa in a strong agriculture area.

Farm Data:	
Cropland	104.59 acres
Non-crop	8.21 acres
Total	112.8 acres

Aerial Map



Soil Map



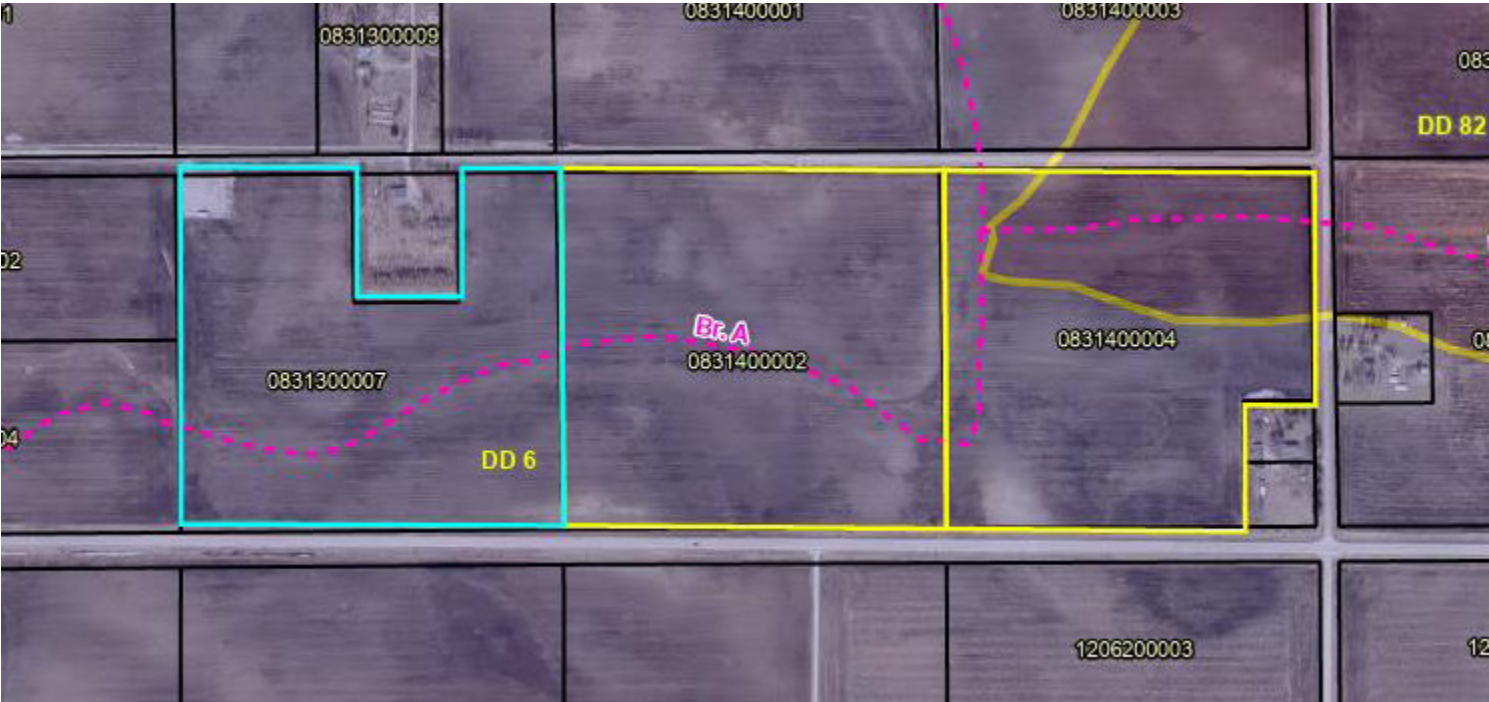
SOIL CODE	SOIL DESCRIPTION	ACRES	%	CSR2	CPI	NCCPI	CAP
507	Canisteo clay loam, 0 to 2 percent slopes	45.12	43.52	84.0	0	82	2w
506	Wacousta silty clay loam, depressional, 0 to 1 percent slopes	38.52	37.16	69.0	0	87	3w
55	Nicollet clay loam, 1 to 3 percent slopes	9.69	9.35	89.0	0	81	1
138B	Clarion loam, 2 to 6 percent slopes	3.5	3.38	89.0	0	83	2e
828B	Zenor sandy loam, 2 to 5 percent slopes	2.86	2.76	53.0	0	50	3e
6	Okoboji silty clay loam, 0 to 1 percent slopes	2.61	2.52	59.0	0	76	3w
5040	Udorthents, loamy (cut and fill land)	1.23	1.19	5.0	0	-	-
95	Harps clay loam, 0 to 2 percent slopes	0.14	0.14	72.0	0	82	2w
TOTALS		103.67(*)	100%	76.62	-	81.79	2.33

Information provided was obtained from sources deemed reliable, but the broker makes no guarantees as to its accuracy. All prospective buyers are urged to inspect the property, its title and to rely on their own conclusions. Seller reserves the right to refuse any or all offers submitted and may withdraw the property from offering without notice. Farmers National Company and its representatives on the reverse side are the Designated Agents for the seller.

Location Map



Plat Map





SCAN THE QR CODE
FOR MORE INFO!



www.FarmersNational.com

**Real Estate Sales • Farm and Ranch Management • Energy Management
Appraisals • Insurance • Consultations • Forestry Management • Hunting Lease Network • FNC Securities**