



# ELEVATOR FOR SALE

5.97± Acres, Brown County, Nebraska

OFFERED AT  
**\$100,000**

## Highlights:

- 330,000 bushels of storage
- 70' working scale
- Sits on nearly 6 acres



**For additional information, please contact:**  
**Dave Hickey, Agent | (402) 340-4436**  
[DHickey@FarmersNational.com](mailto:DHickey@FarmersNational.com)



## Property Information

**Property Description:** Grain storage/elevator on 5.97± acres at the south end of Main Street in Long Pine. Four large bins plus 16,000-bushel wet tank offers 330,000 bushels of storage, with 1,536-square-foot machine shed/shop plus 1,236-square-foot office. Great opportunity for organic or specialty crop storage. The location may lend itself to other uses as well. Call the agent for details.

**Directions to Property:** South Main Street, Long Pine, Nebraska

**Legal Description:** Part of the Northeast Quarter (NE¼) of Section 31, Township 30 North, Range 20 West of the 6th P.M., Brown County, Nebraska.

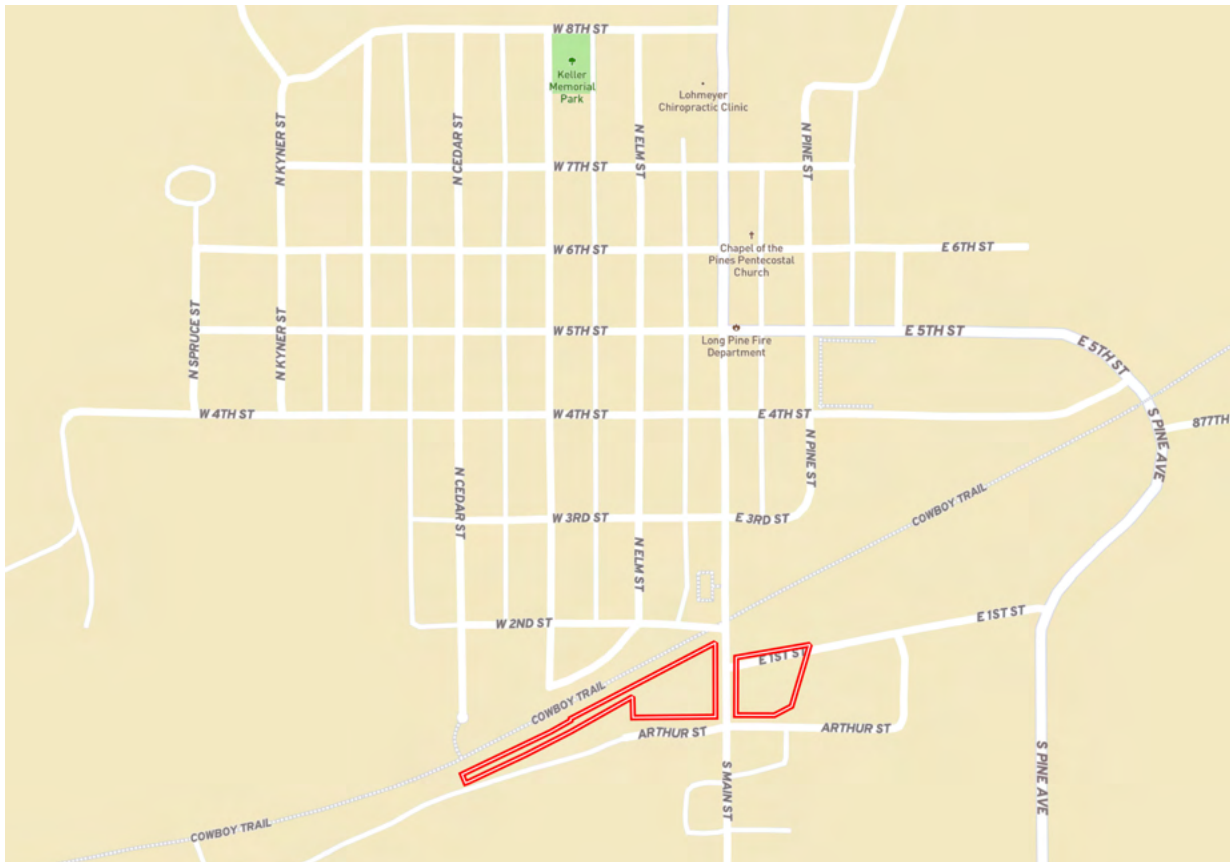
**Price:** \$100,000.00

**2025 Taxes:** \$1,395.18

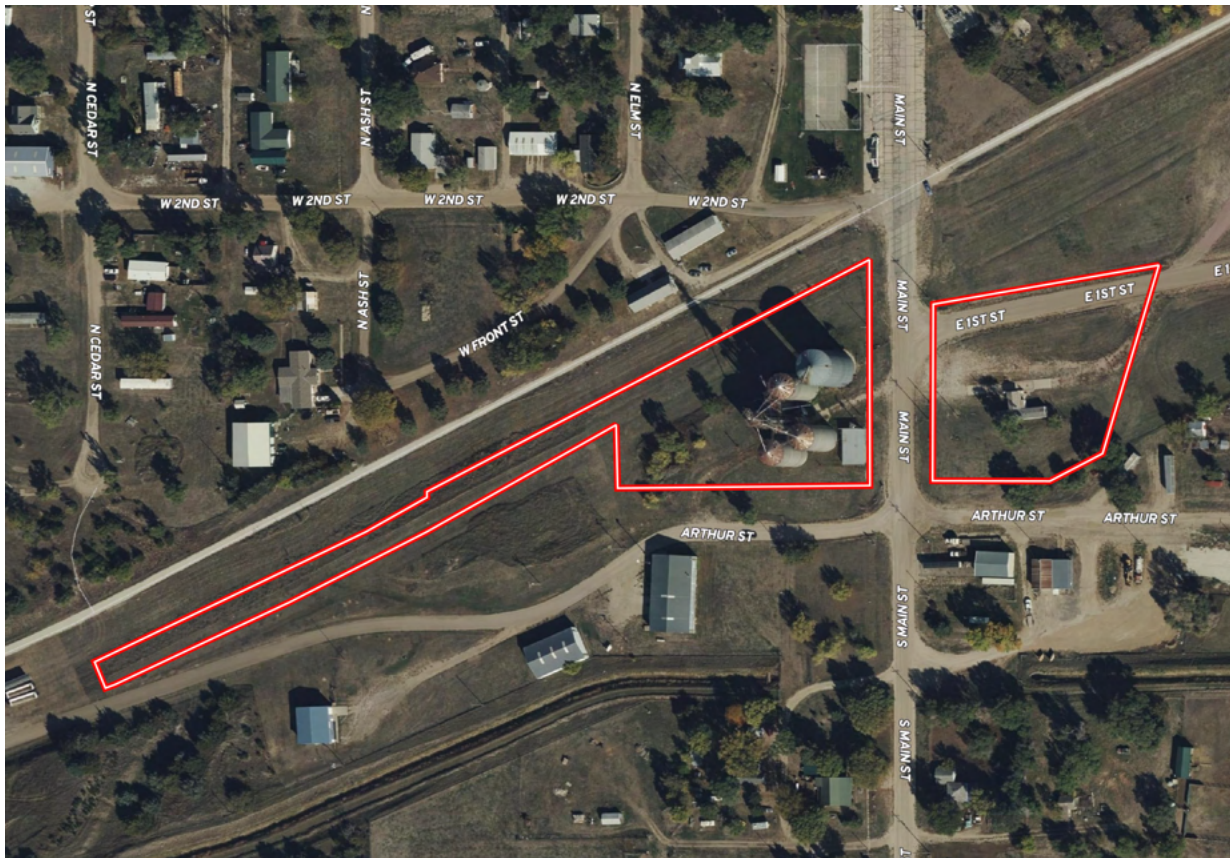




## Location Map



## Aerial Map



Information provided was obtained from sources deemed reliable, but the broker makes no guarantees as to its accuracy. All prospective buyers are urged to inspect the property, its title and to rely on their own conclusions. Seller reserves the right to refuse any or all offers submitted and may withdraw the property from offering without notice. Farmers National Company and its representatives on the reverse side are the Designated Agents for the seller.



# ELEVATOR FOR SALE

**5.97± Acres, Brown County, Nebraska**



**SCAN THE QR CODE  
FOR MORE INFO!**



**[www.FarmersNational.com](http://www.FarmersNational.com)**

**Real Estate Sales • Farm and Ranch Management • Energy Management  
Appraisals • Insurance • Consultations • Forestry Management • Hunting Lease Network • FNC Securities**