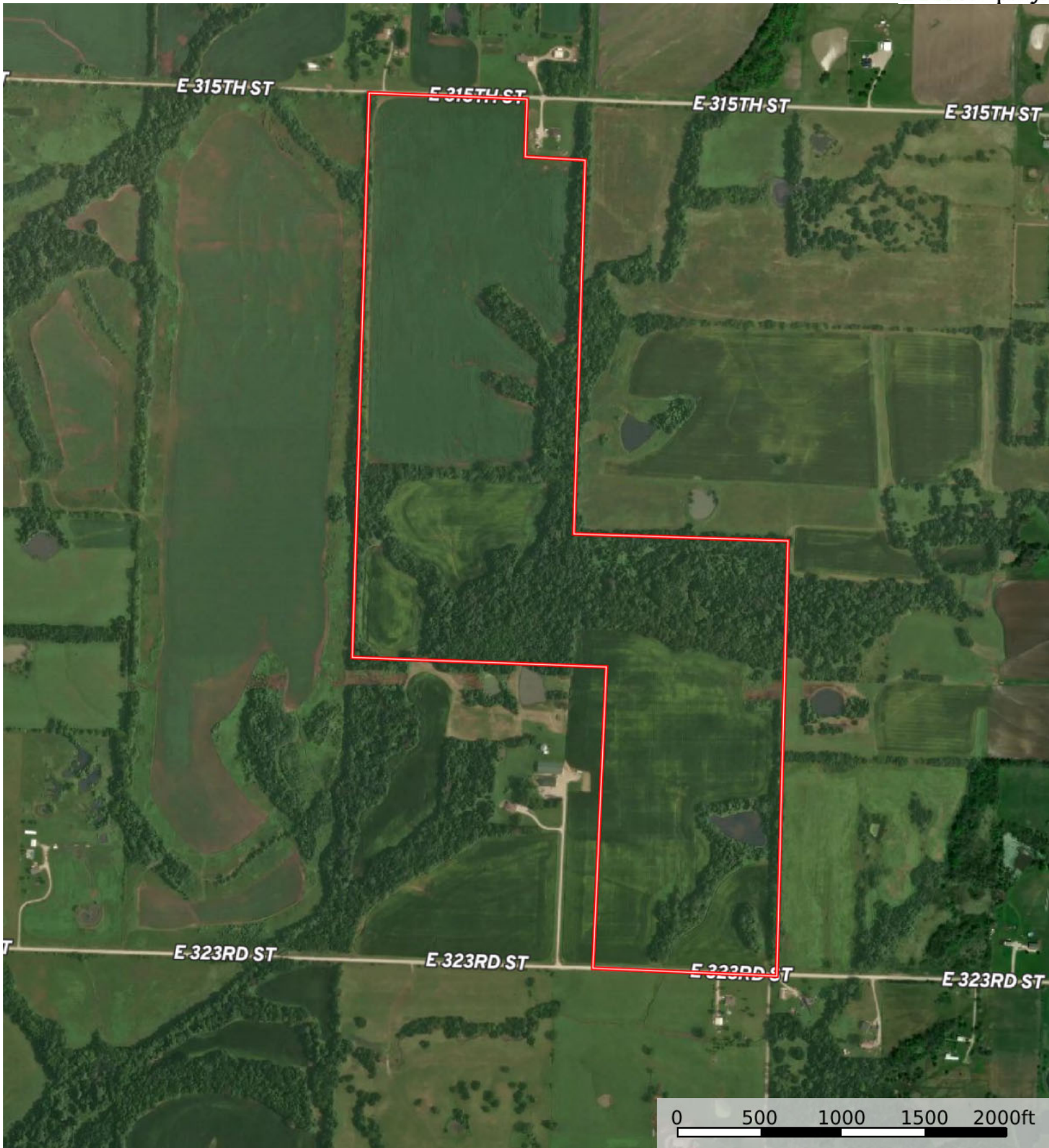
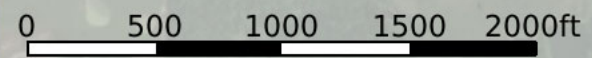
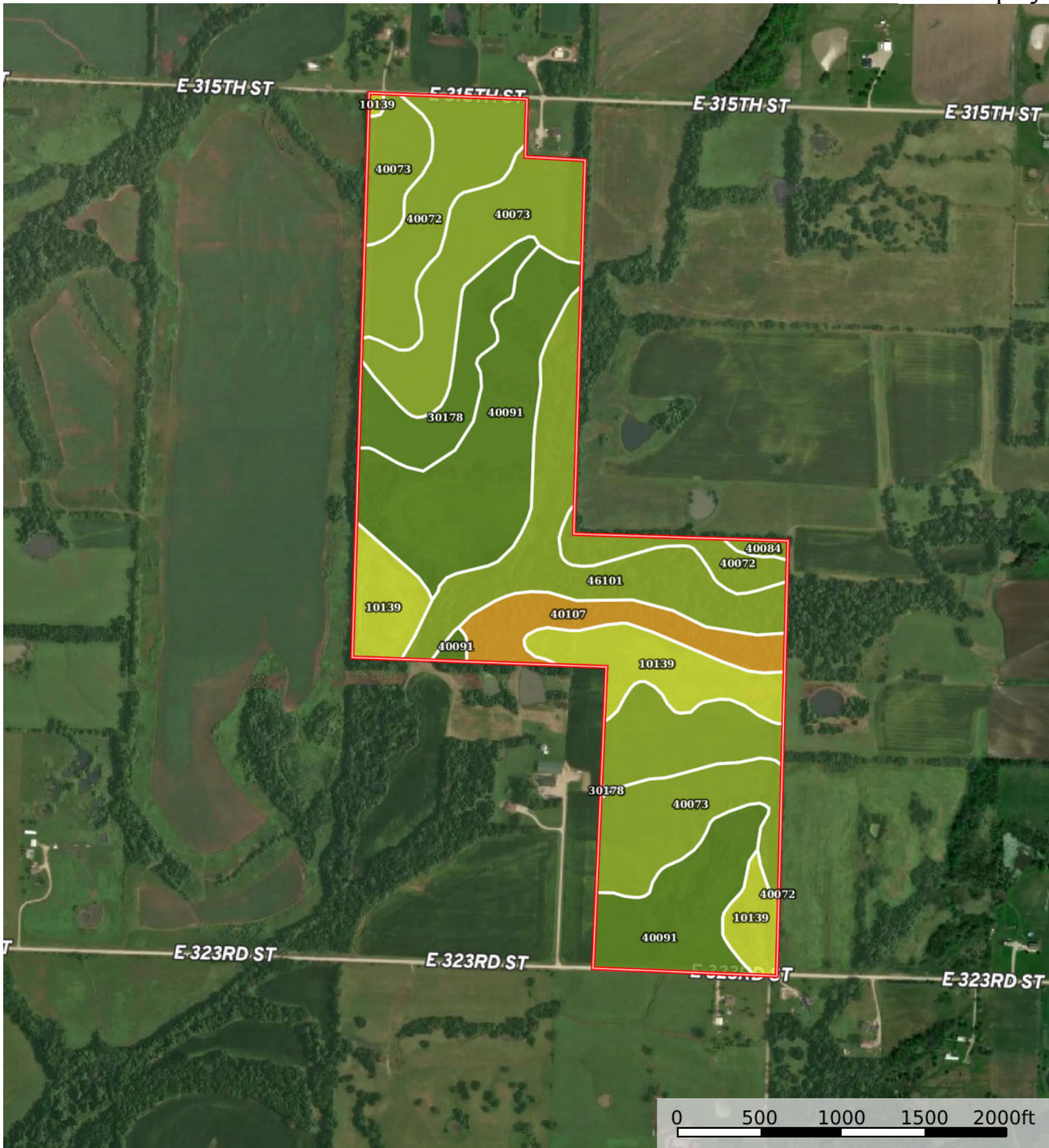


 Boundary



 Boundary



 Boundary

Boundary 172.53 ac

SOIL CODE	SOIL DESCRIPTION	ACRES	%	CPI	NCCPI	CAP
40091	Summit silty clay loam, 2 to 5 percent slopes	40.54	23.49	0	69	2e
40073	Kenoma silt loam, 4 to 7 percent slopes	36.15	20.95	0	61	3e
40072	Kenoma silt loam, 1 to 3 percent slopes	30.41	17.62	0	59	3e
46101	Verdigris silt loam, 1 to 3 percent slopes, frequently flooded	23.22	13.46	0	80	3w
10139	Snead silty clay loam, 5 to 14 percent slopes	20.81	12.06	0	44	4e
30178	Polo silt loam, 2 to 5 percent slopes	10.42	6.04	0	79	2e
40107	Snead-Rock outcrop complex, warm, 5 to 14 percent slopes	10.21	5.92	0	43	6e
40084	Oska silty clay loam, 5 to 9 percent slopes	0.77	0.45	0	64	3e
TOTALS		172.53(*)	100%	-	63.06	3.0

(*) Total acres may differ in the second decimal compared to the sum of each acreage soil. This is due to a round error because we only show the acres of each soil with two decimal.



