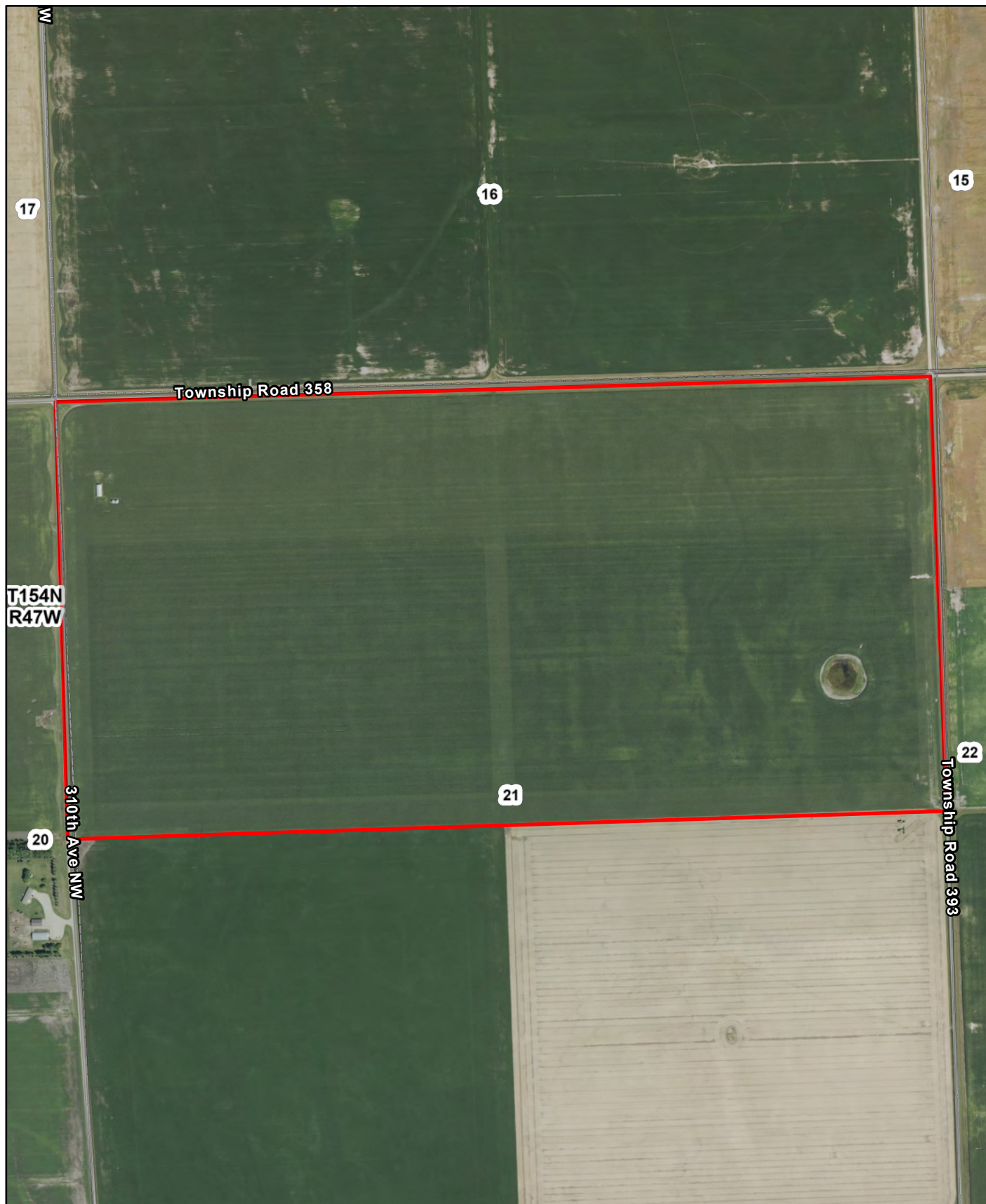


L-2600177
559.04
Polk County, Minnesota

Latitude: 48.1641°N
Longitude: 96.7288°W
Imagery Source: USDA NAIP
Soil Data Source: USDA NRCS
Boundaries are Approximate



L-2600177
559.04
Polk County, Minnesota

Latitude: 48.1482°N
Longitude: 96.7067°W
Imagery Source: USDA NAIP
Soil Data Source: USDA NRCS
Boundaries are Approximate

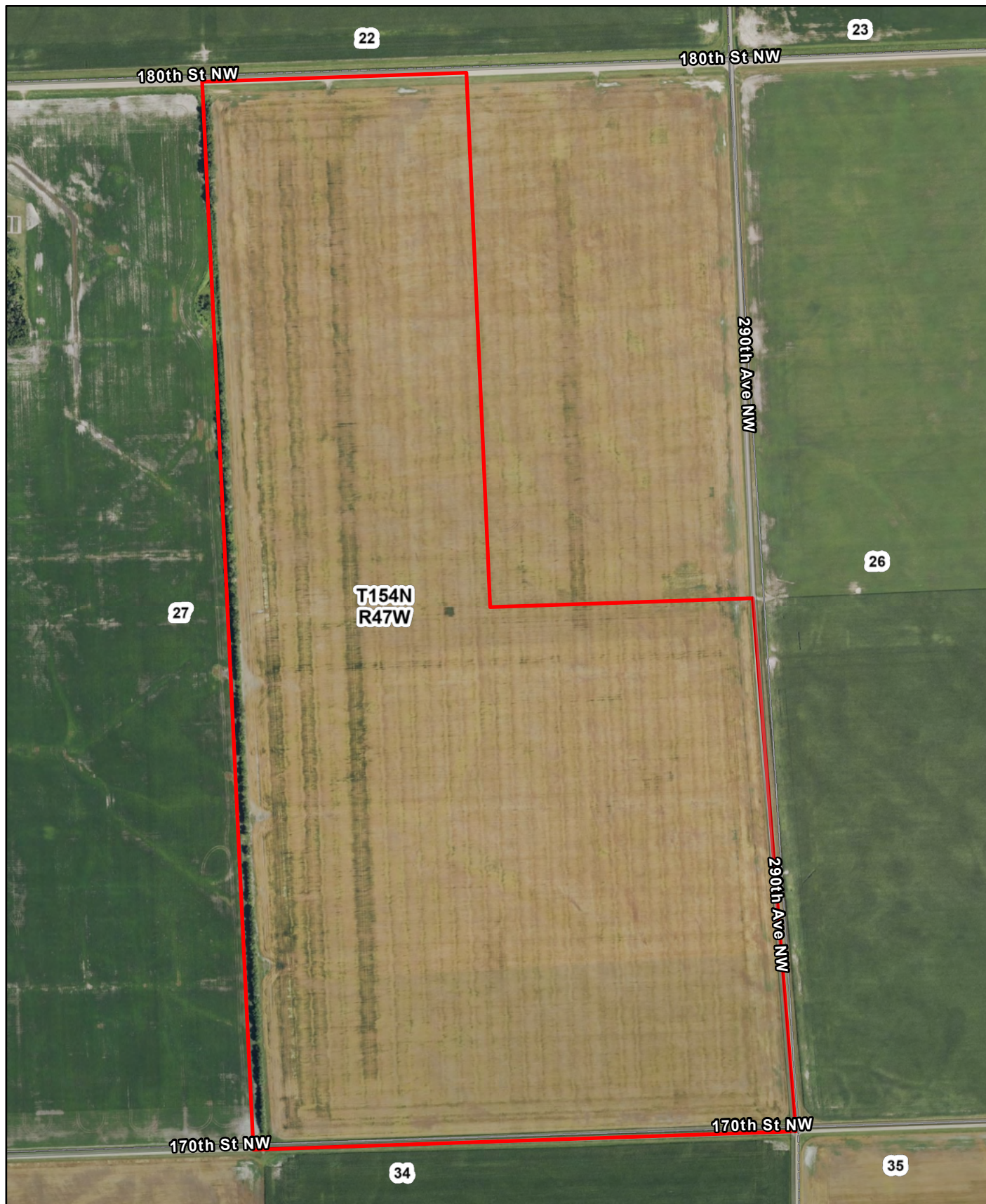


Map Symbol	Name	Non-IRR LCC	PRODUCTIVITY INDEX	ACRES
I23A	Glyndon very fine sandy loam, 0 to 2 percent slopes	2e	89	243
I376A	Colvin silty clay loam, 0 to 1 percent slopes	2w	89	26.6
I6A	Borup very fine sandy loam, 0 to 1 percent slopes	2w	90	22.6
I111A	Wheatville very fine sandy loam, 0 to 2 percent slopes	2e	89	11.6
I65A	Ulen loamy fine sand, 0 to 2 percent slopes	3s	55	10.8
I467A	Bearden silt loam, 0 to 2 percent slopes	2e	93	5.8
I15A	Hecla loamy fine sand, 0 to 2 percent slopes	4e	50	5.1
I55A	Rosewood fine sandy loam, Aspen Parkland, 0 to 1 percent slopes	3w	54	1
TOTAL			87.3	326.5



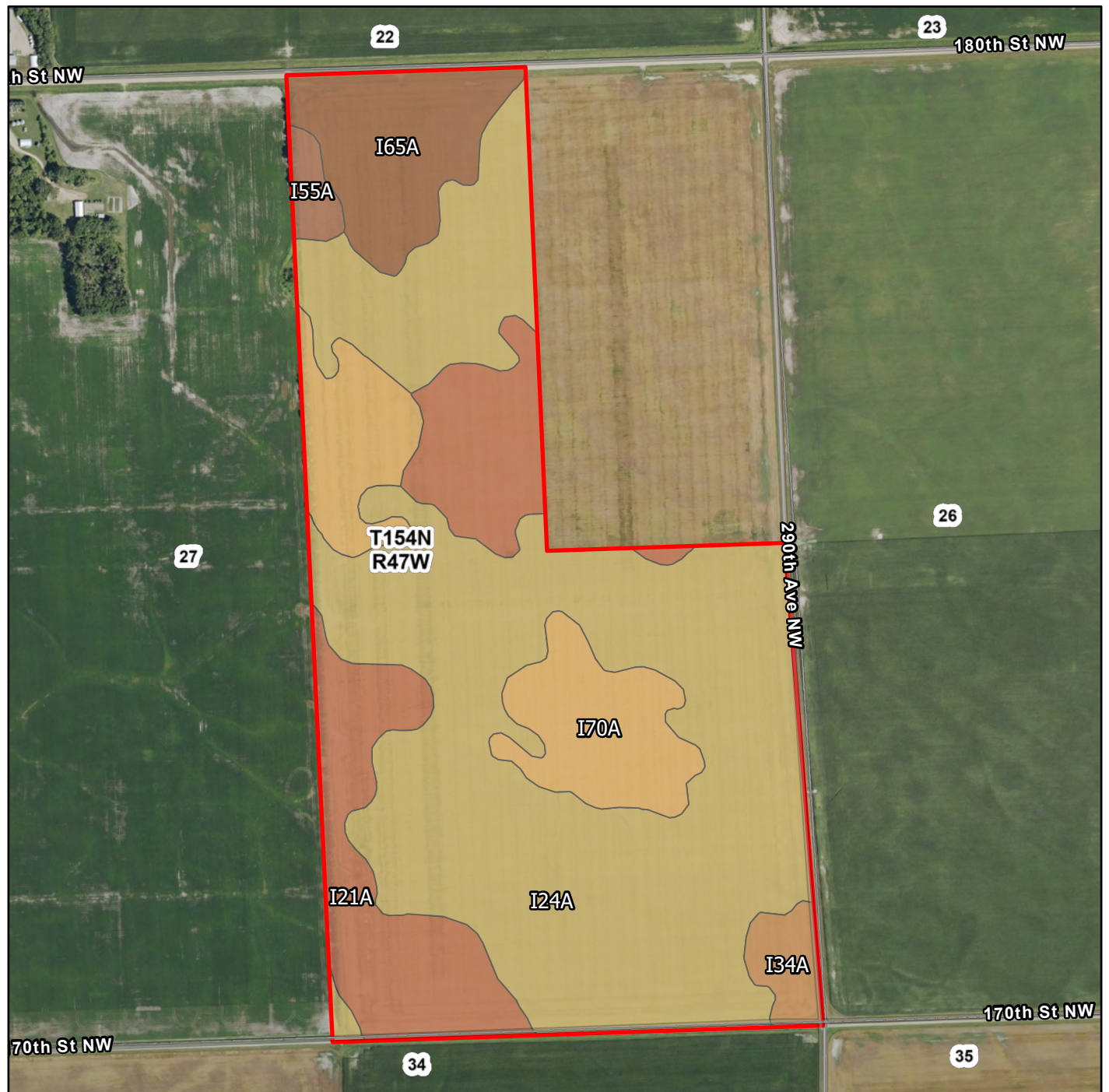
L-2600177
559.04
Polk County, Minnesota

Latitude: 48.1482°N
Longitude: 96.7067°W
Imagery Source: USDA NAIP
Soil Data Source: USDA NRCS
Boundaries are Approximate



L-2600177
559.04
Polk County, Minnesota

Latitude: 48.13°N
Longitude: 96.6792°W
Imagery Source: USDA NAIP
Soil Data Source: USDA NRCS
Boundaries are Approximate

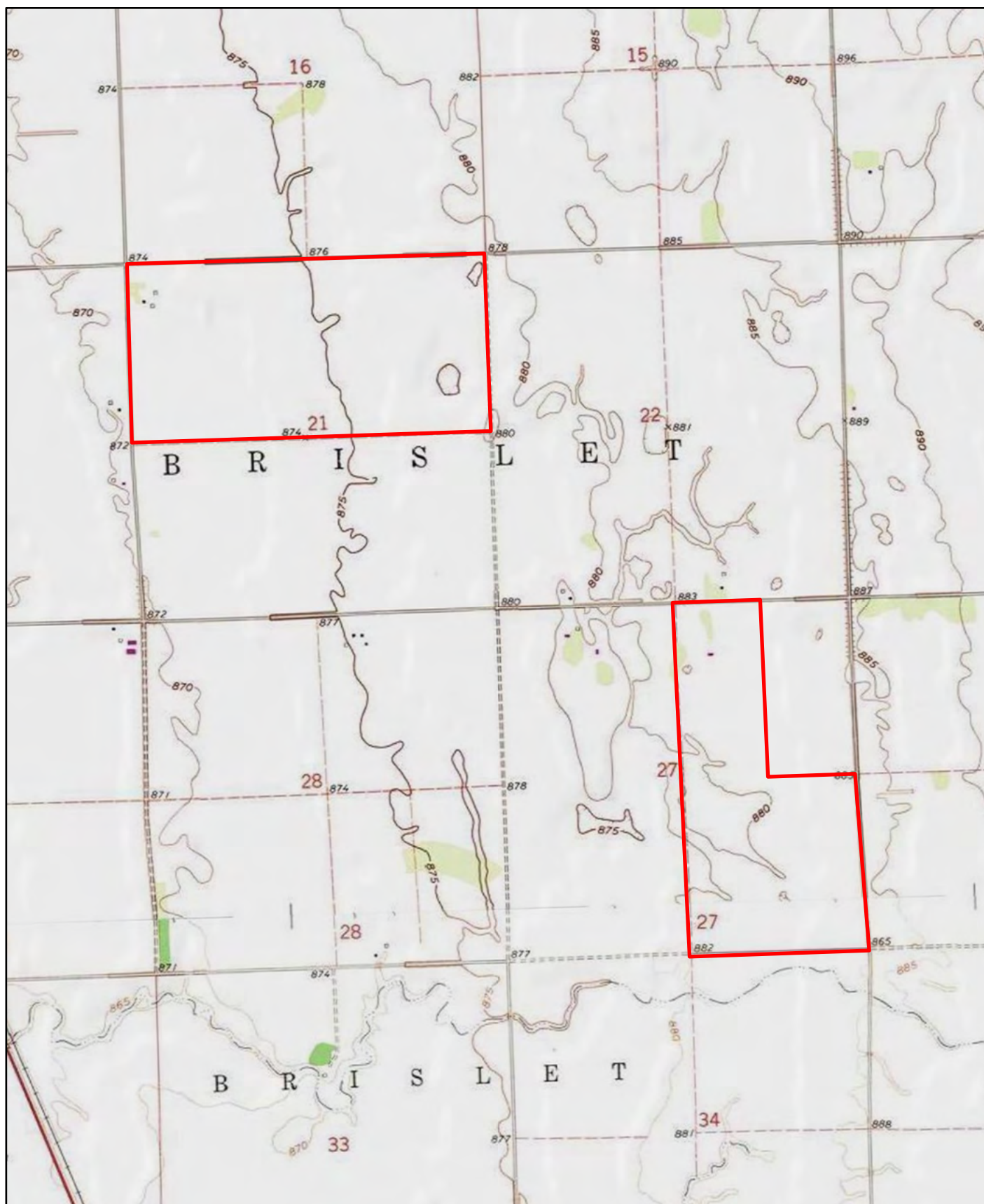


Map Symbol	Name	Non-IRR LCC	PRODUCTIVITY INDEX	ACRES
I24A	Grimstad fine sandy loam, 0 to 2 percent slopes, aspen parkland	2s	88	141.9
I21A	Fram loam, 1 to 3 percent slopes	2e	90	40.5
I70A	Strathcona fine sandy loam, 0 to 1 percent slopes	2w	80	29.7
I65A	Ulen loamy fine sand, 0 to 2 percent slopes	3s	55	19.5
I34A	Huot fine sandy loam, clayey till substratum, 0 to 2 percent slopes	2s	75	5
I55A	Rosewood fine sandy loam, Aspen Parkland, 0 to 1 percent slopes	3w	54	2.9
TOTAL			84	239.5



L-2600177
559.04
Polk County, Minnesota

Latitude: 48.13°N
Longitude: 96.6792°W
Imagery Source: USDA NAIP
Soil Data Source: USDA NRCS
Boundaries are Approximate



L-2600177
559.04
Polk County, Minnesota

Latitude: 48.1373°N
Longitude: 96.6955°W
Imagery Source: USDA NAIP
Soil Data Source: USDA NRCS
Boundaries are Approximate