

**L-2600190**  
**160 Ac**  
**Chippewa County, Minnesota**

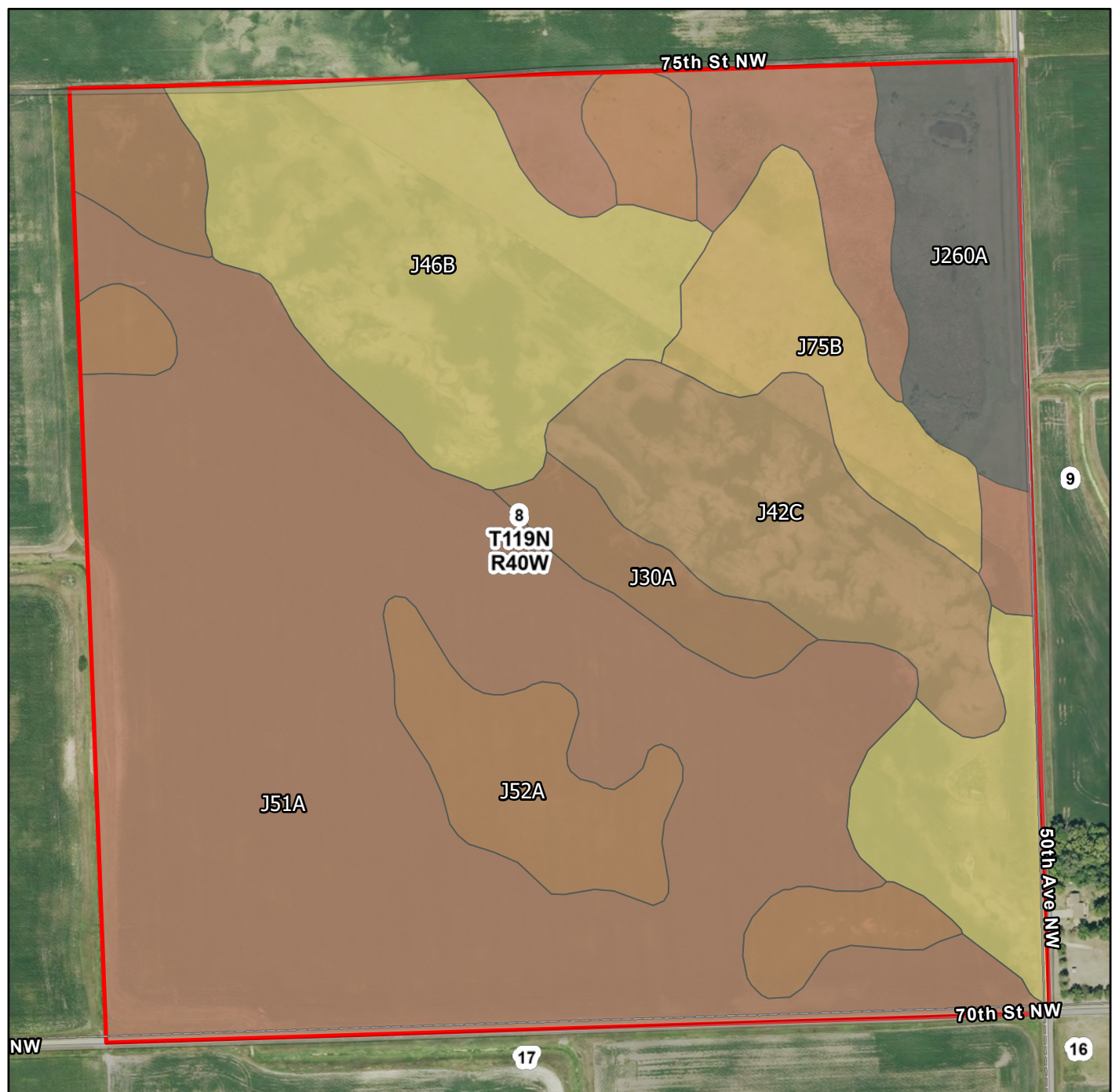
Latitude: 45.1328°N  
Longitude: 95.7376°W  
Imagery Source: USDA NAIP  
Soil Data Source: USDA NRCS  
Boundaries are Approximate



**L-2600190**  
**160 Ac**  
**Chippewa County, Minnesota**

Latitude: 45.1266°N  
Longitude: 95.701°W  
Imagery Source: USDA NAIP  
Soil Data Source: USDA NRCS  
Boundaries are Approximate



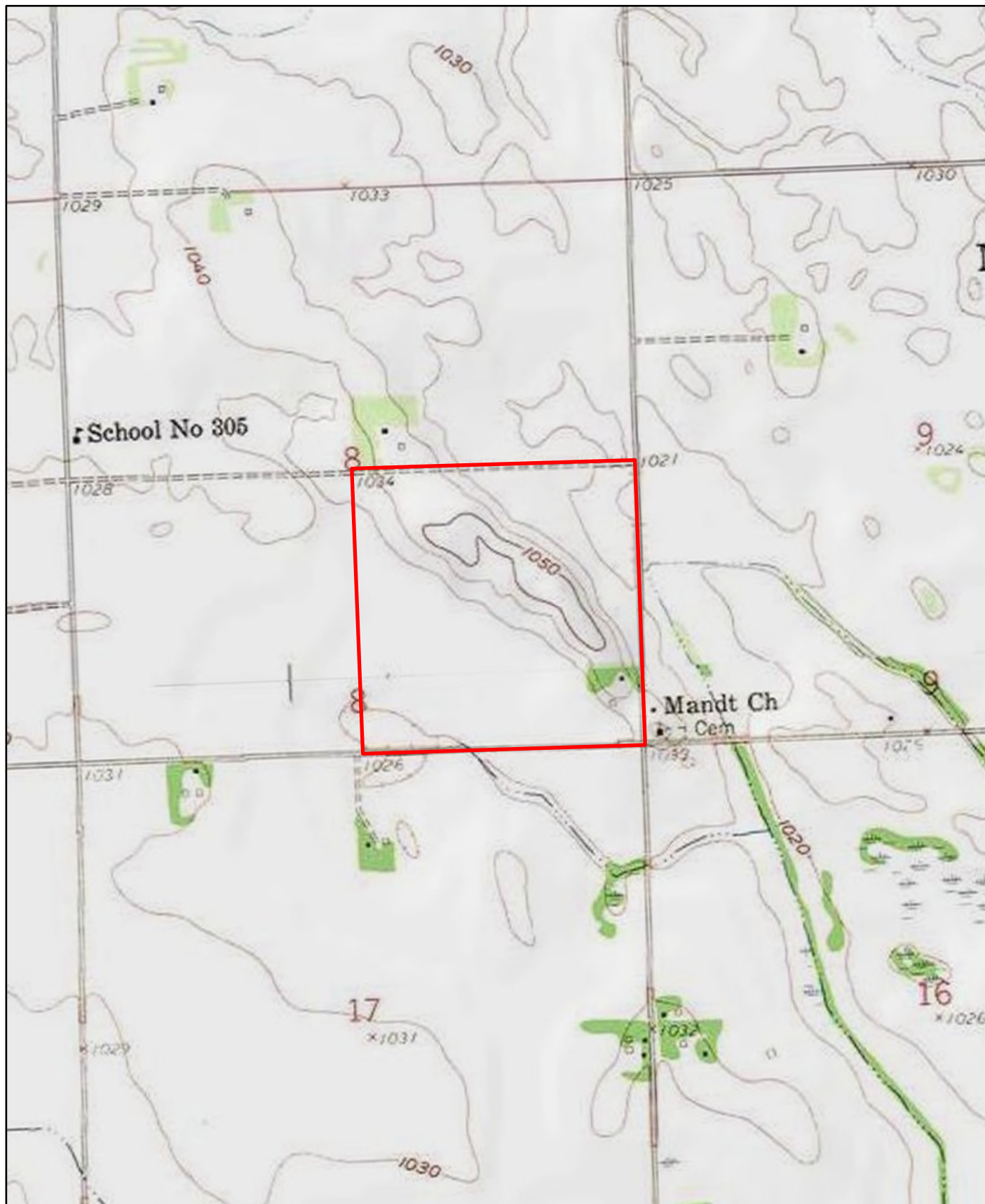


Map Symbol	Name	Non-IRR LCC	PRODUCTIVITY INDEX	ACRES
J51A	Bearden-Quam, depressional, complex, 0 to 2 percent slopes	2s	91	78.3
J46B	Byrne silt loam, 1 to 6 percent slopes	2e	90	30
J42C	Sandberg-Arvilla complex, 6 to 12 percent slopes	6s	38	13.6
J52A	Rondell silty clay loam, 1 to 3 percent slopes	2s	89	13.5
J260A	Colvin-Quam complex, depressional, 0 to 1 percent slopes	3w	86	9.1
J75B	Fordville loam, 2 to 6 percent slopes	2e	63	8.3
J30A	Tara silt loam, 1 to 3 percent slopes	1	99	7
TOTAL			84.7	159.8



**L-2600190**  
**160 Ac**  
**Chippewa County, Minnesota**

Latitude: 45.1266°N  
Longitude: 95.701°W  
Imagery Source: USDA NAIP  
Soil Data Source: USDA NRCS  
Boundaries are Approximate



**L-2600190**  
**160 Ac**  
**Chippewa County, Minnesota**

Latitude: 45.1266°N  
Longitude: 95.701°W  
Imagery Source: USDA NAIP  
Soil Data Source: USDA NRCS  
Boundaries are Approximate