

SCAN THE QR CODE  
FOR MORE INFO!



# LAND FOR SALE

324.67± Acres

Pennington County, South Dakota

OFFERED AT  
**\$3,399,000**

## Highlights:

- Beautiful highly-desirable forested land south of Rapid City
- Located next to Red Rocks Golf Course and Rapid City limits
- Prime development land with great access to good water and roads



For additional information, please contact:



Tyler Radke, Agent | (605) 999-0919  
TRadke@FarmersNational.com



Steve Satterlee, Agent | (605) 641-6882  
SSatterlee@FarmersNational.com



Lee Kinney, Agent | (605) 222-0774  
LKinney@FarmersNational.com

# Property Information

## Directions to Property:

In Rapid City, starting from the junction of West Main Street and Sheridan Lake Road, head south on Sheridan Lake Road for 5.9 miles, turn south on Muirfield Drive for .4 miles, turn left or west on Prestwick Road for 1 mile to Bethpage Drive. There are two entrances to the land at either the west or east end of Bethpage Drive. Call listing Broker, Steve Satterlee (605) 641-6882 cell, regarding showings.

## Legal Description:

**Section 20:** W1/2 less that tract being 2,147.5' x 233' lying within Rapid City city limits, W1/2SW1/4NW1/4NE1/4, NW1/4NW1/4SW1/4NE1/4 (Less 10 acres at N end of Section 20. Legal TBD). ID #3720100004, 311.01 acres.

**Section 20:** A Tract in SW1/4, 2,147.5' x 233', ID #3720300001, 11.49 acres.

**Section 29:** That Pt of NW1/4 located N of Lot 1 and Lot 4, Block 16, Red Rock Estates, ID #3729101015, 2.17 acres.

## Property Description:

A significant portion of this property is highly developable, offering outstanding potential for a wide range of projects. With excellent access to water and electricity, this land is well suited for residential, recreational, or mixed use development.

Located just north and west of the Red Rock Estates Residential Area and the Red Rock Golf Course, the property features beautiful terrain—some of which is ideal for recreational vehicle activities. The landscape also offers exceptional building sites perfect for savvy developers and investors looking for premium opportunities.



Although this unique Black Hills property provides privacy and seclusion, it remains just minutes from the heart of Rapid City, South Dakota —making this a rare chance to secure a large, highly desirable piece of top-tier real estate in an unbeatable location.

Please call **Steve Satterlee** (605) 641-6882, **Tyler Radke** at (605) 999-0919, or **Lee Kinney** at (605) 222-0774 for details or showings.

## Farm Data:

Pasture	324+/- acres
Timber	220+/- acres
Developable	100+/- acres

## Improvements:

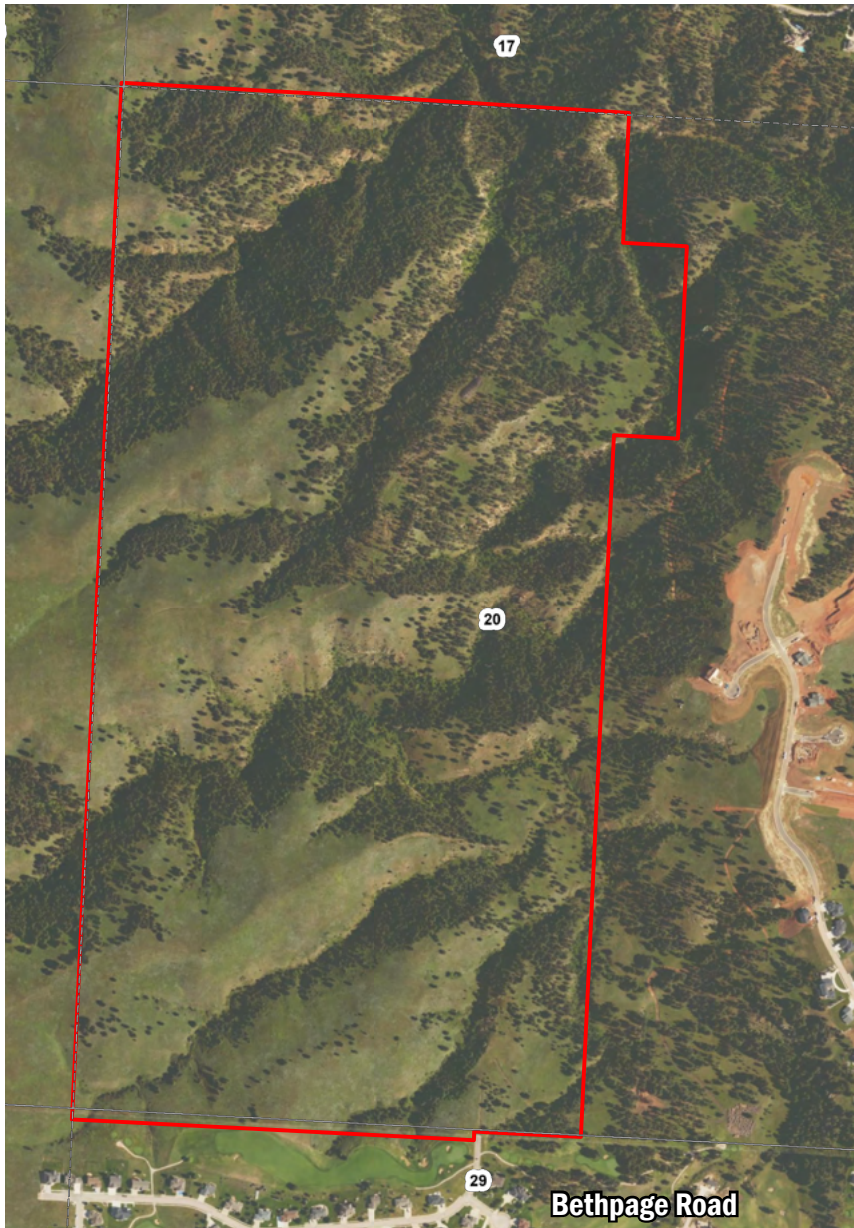
No buildings on property.

**2025 Taxes:** \$321.30

**Price:** \$3,399,000



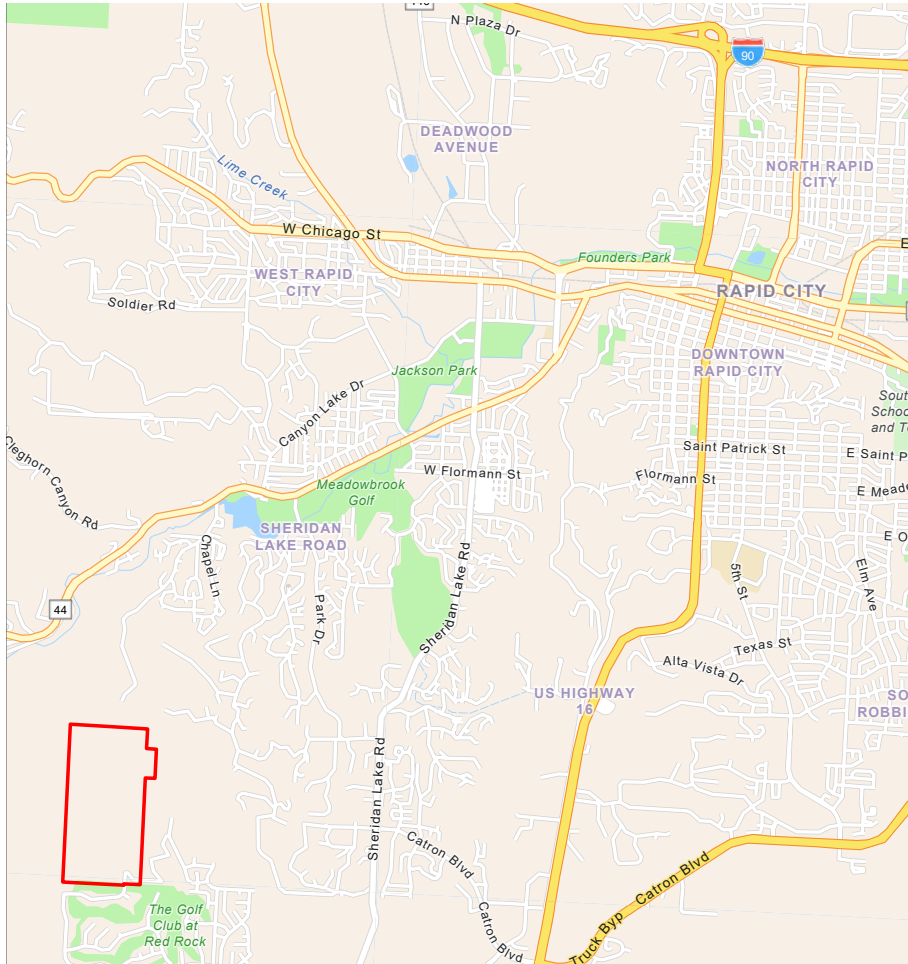
# Aerial Map



# LAND FOR SALE

324.67± Acres, Pennington County, South Dakota

## Location Map



[www.FarmersNational.com](http://www.FarmersNational.com)

Real Estate Sales • Farm and Ranch Management • Energy Management  
Appraisals • Insurance • Consultations • Forestry Management • Hunting Lease Network • FNC Securities