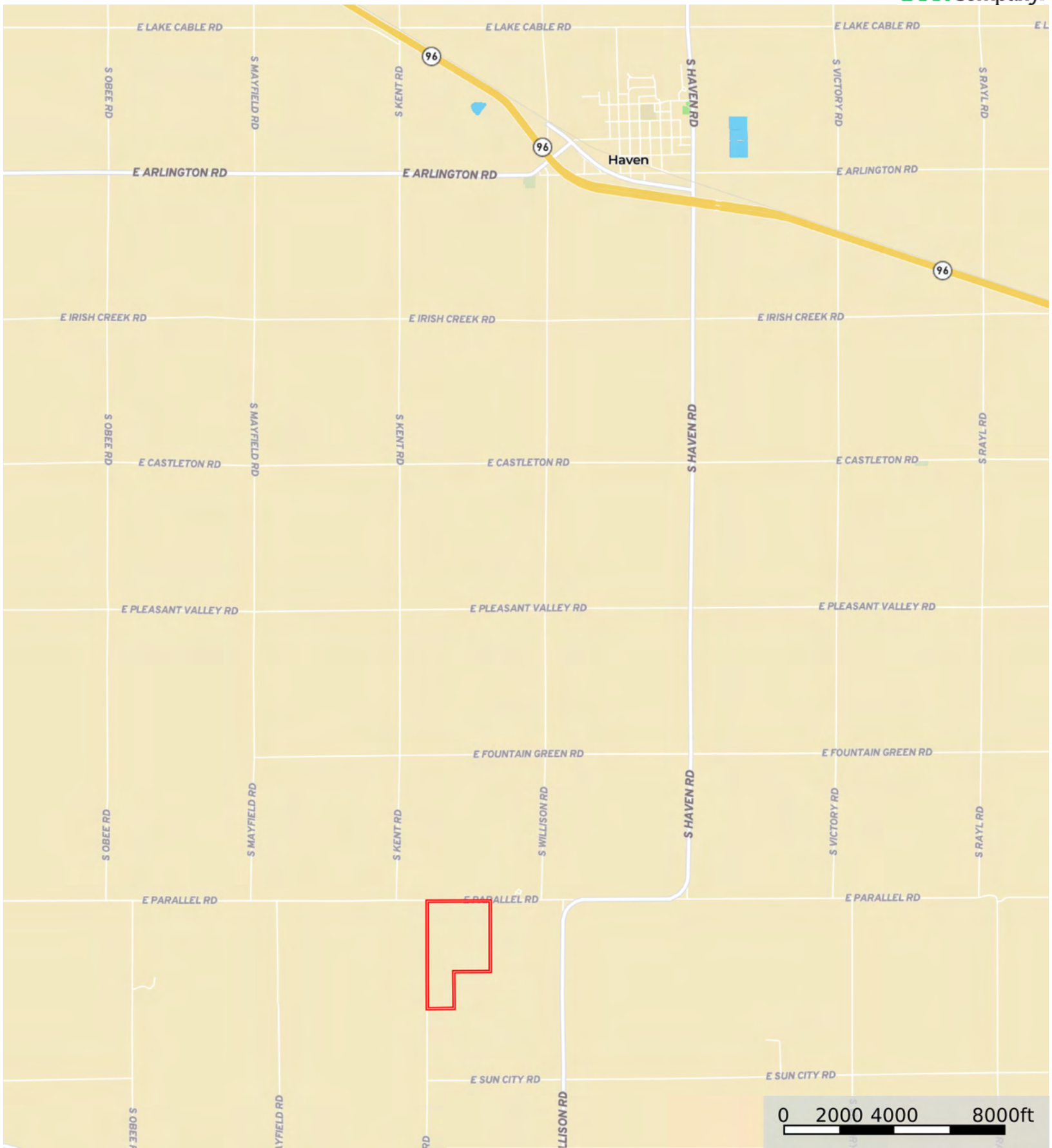


L-2600243

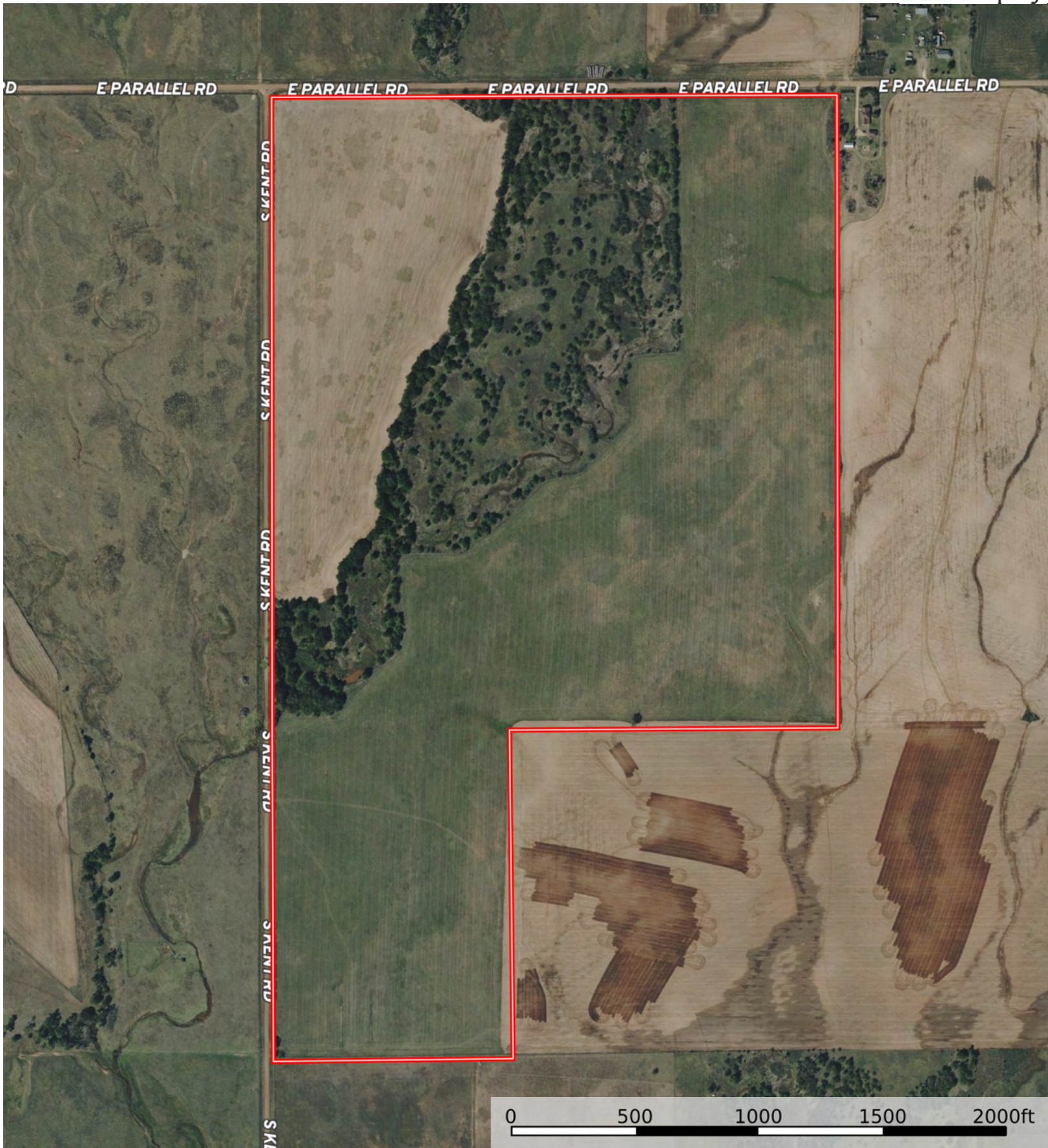
Reno County, Kansas, 165.2 AC +/-



 Boundary

L-2600243

Reno County, Kansas, 165.2 AC +/-



Boundary



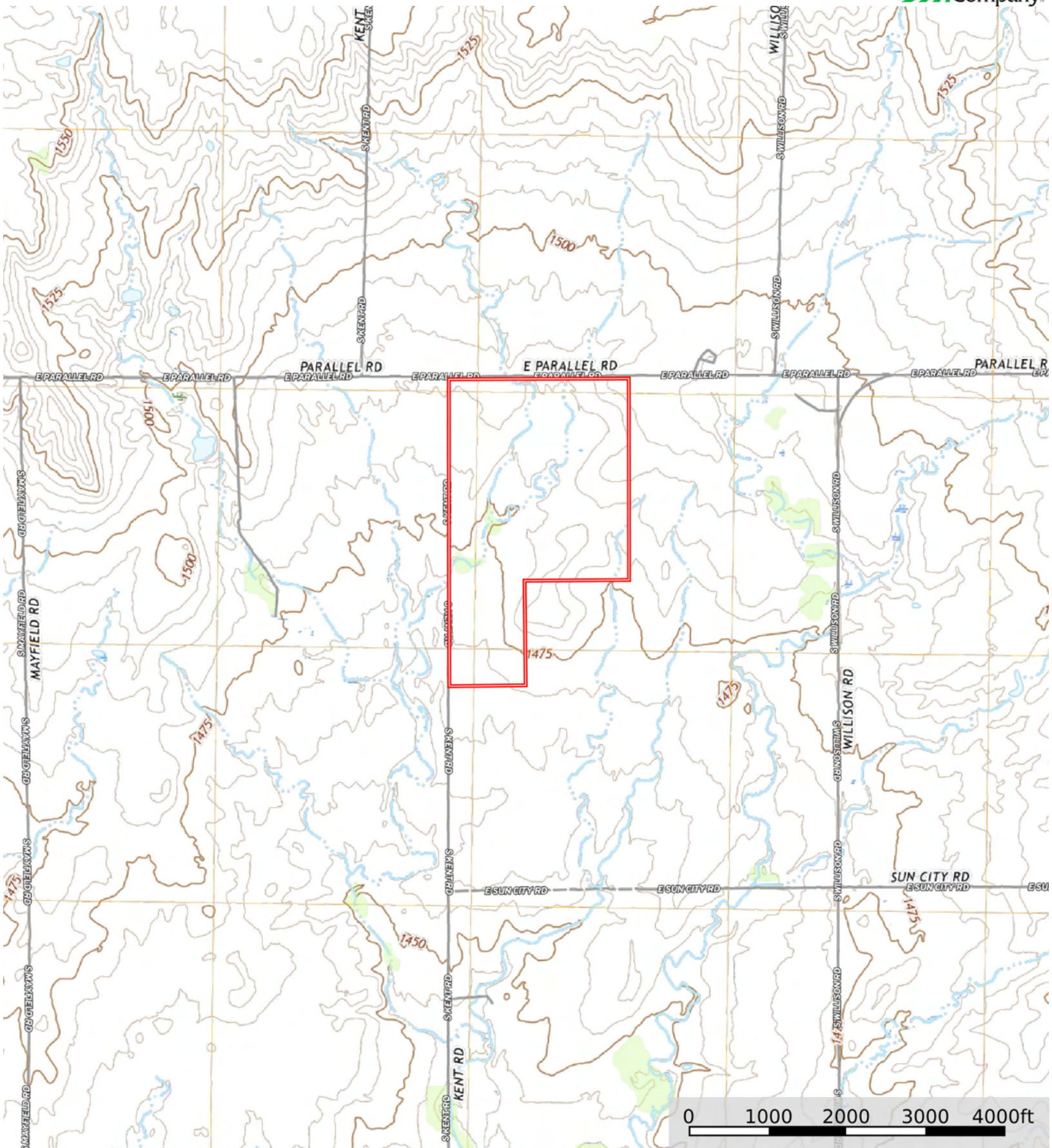
 Boundary

Boundary 165.13 ac

SOIL CODE	SOIL DESCRIPTION	ACRES	%	CPI	NCCPI	CAP
6348	Jamash-Piedmont clay loams, 1 to 3 percent slopes	74.89	45.35	0	35	4s
6346	Jamash clay loam, 0 to 8 percent slopes	55.91	33.86	0	29	6s
6347	Jamash-Piedmont clay loams, 0 to 1 percent slopes	26.55	16.08	0	36	4s
5956	Shellabarger sandy loam, 1 to 3 percent slopes	7.78	4.71	0	53	2e
TOTALS		165.13(*)	100%	-	33.98	4.58

(*) Total acres may differ in the second decimal compared to the sum of each acreage soil. This is due to a round error because we only show the acres of each soil with two decimal.





 Boundary