



**Farmers  
National  
Company™**

[www.FarmersNational.com/ONeill](http://www.FarmersNational.com/ONeill)

L-2600257



SCAN THE QR CODE  
FOR MORE INFO!



# LAND FOR SALE

59.99± Acres, Holt County, Nebraska

**OFFERED AT**  
**\$299,950 OR**  
**\$5,000 PER ACRE**

## Highlights:

- Highway 281 frontage
- Numerous building locations
- Submersible well

For additional information, please contact:



**Bryan Hofer, Agent**  
(402) 336-3500 or (402) 340-4685  
BHofer@FarmersNational.com



**Dave Hickey, Agent**  
(402) 336-3500 or (402) 340-4436  
DHickey@FarmersNational.com

# Property Information

## Directions to Property:

3¼ miles north of O’Neill, Nebraska, along U.S. Highway 281.

**Legal Description:** Part of the Southeast Quarter (SE¼) of Section 1 less Right-of-Way, Township 29 North, Range 12 West of the 6th P.M., Holt County, Nebraska.

## Property Description:

Discover the possibilities with this 59.99± acre property conveniently located just off Highway 281 north of O’Neill. The land offers multiple potential building sites, making it an excellent opportunity for a rural home, recreational retreat, or agricultural use.

The property includes a well with a submersible pump already in place and is cross-fenced, providing flexibility for livestock or land management. With wide open space and a blank slate to develop as you choose, this acreage is truly a raw canvas ready for your vision.

**Call the agents for details!**

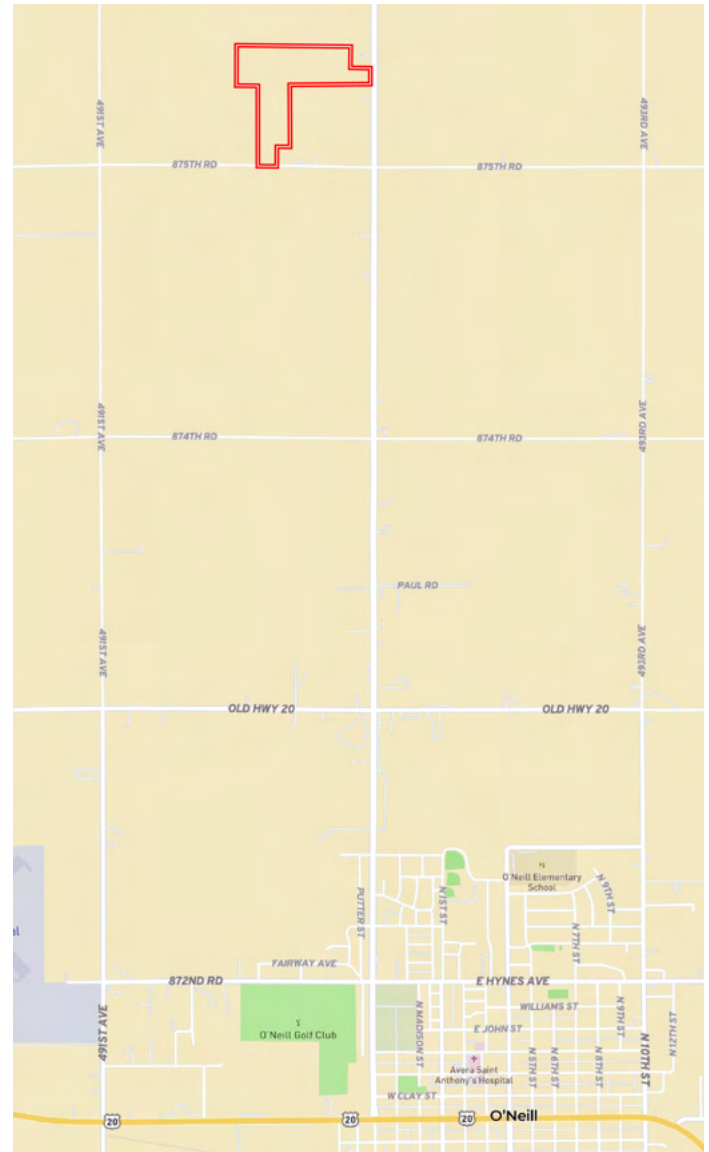
## 2025 Taxes:

\$594.98

## Price:

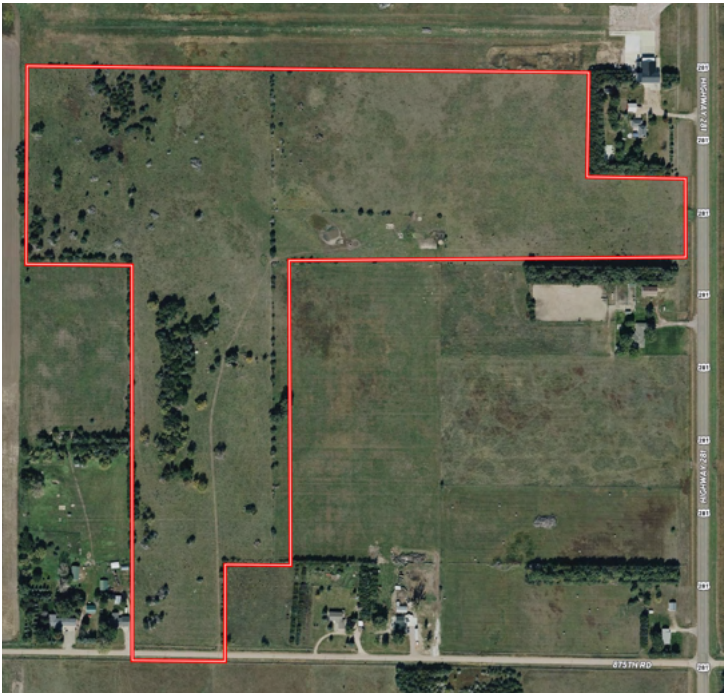
\$299,950.00 or \$5,000.00 per acre

# Location Map

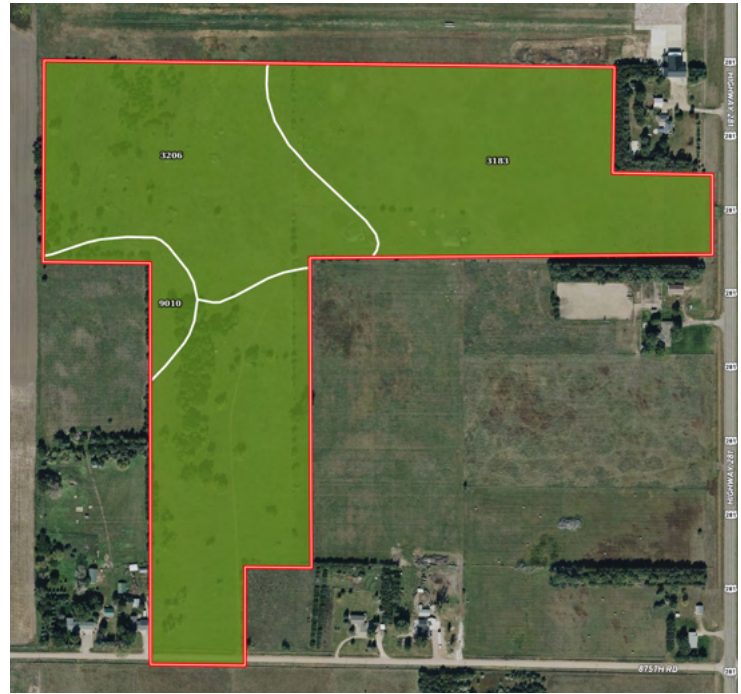


Information provided was obtained from sources deemed reliable, but the broker makes no guarantees as to its accuracy. All prospective buyers are urged to inspect the property, its title and to rely on their own conclusions. Seller reserves the right to refuse any or all offers submitted and may withdraw the property from offering without notice. Farmers National Company and its representatives on the reverse side are the Designated Agents for the seller.

**Aerial Map**



**Soil Map**



SOIL CODE	SOIL DESCRIPTION	ACRES	%	CPI	NCCPI	CAP
3183	Jansen loam, 0 to 2 percent slopes	40.53	65.73	54	43	2s
3206	Josburg loam, 0 to 2 percent slopes	18.84	30.55	0	64	2c
9010	Anselmo loam, 0 to 1 percent slopes	2.3	3.73	0	56	2c
TOTALS		61.67(*)	100%	35.49	49.91	2.0



# LAND FOR SALE

**59.99± Acres, Holt County, Nebraska**



**[www.FarmersNational.com/ONeill](http://www.FarmersNational.com/ONeill)**

**Real Estate Sales • Farm and Ranch Management • Energy Management  
Appraisals • Insurance • Consultations • Forestry Management • Hunting Lease Network • FNC Ag Stock**