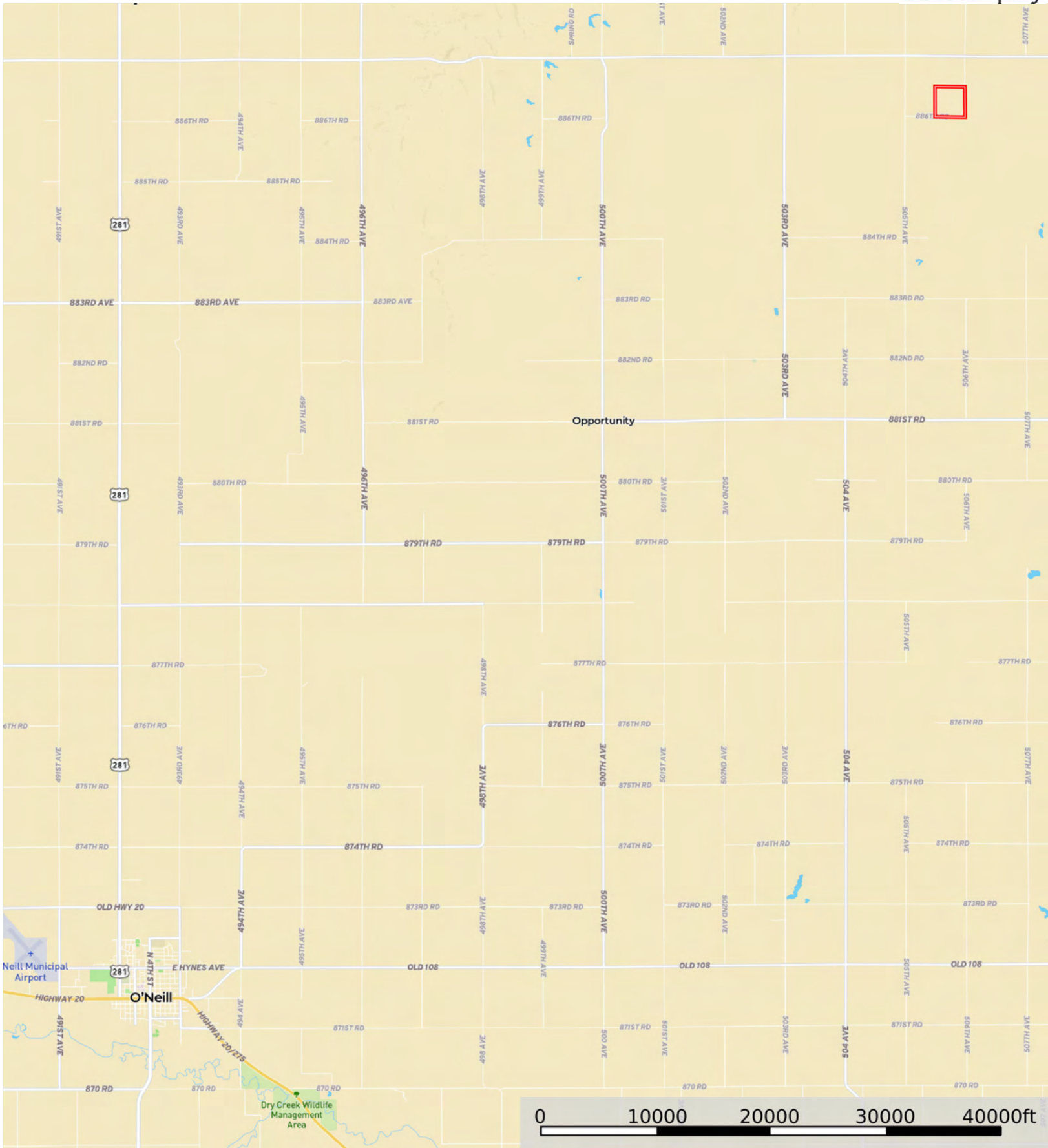


L-2600258

Holt County, Nebraska, 159.25 AC +/-



Boundary



 Boundary

0 200 400 600 800ft

|  Boundary 158.61 ac

SOIL CODE	SOIL DESCRIPTION	ACRES	%	CPI	NCCPI	CAP
8807	Anselmo-Oneill sandy loams, 0 to 3 percent slopes	34.68	21.86	0	46	2e
6320	Barney-Boel-Calamus complex, channeled	32.06	20.21	0	13	6w
9020	Anselmo-Oneill sandy loams, 3 to 6 percent slopes	29.18	18.4	0	45	3e
3284	Paka fine sandy loam, 2 to 6 percent slopes	21.93	13.82	0	51	3e
4498	Dunday loamy sand, 0 to 3 percent slopes	13.46	8.49	0	36	4e
2346	Inavale sand, channeled, frequently flooded	6.77	4.27	0	16	6w
4560	Elsmere-lpage loamy fine sands, 0 to 3 percent slopes	6.37	4.02	0	33	4w
3273	Oneill-Meadin fine sandy loams, 6 to 11 percent slopes	4.77	3.01	0	38	6e
2331	Inavale loamy fine sand, rarely flooded	3.93	2.48	0	27	4e
4857	Valentine-Dunday loamy fine sands, moist, 3-9 percent slopes	2.93	1.85	0	34	6e
4791	Valentine fine sand, 3 to 9 percent slopes	2.53	1.59	0	22	6e
TOTALS		158.6 1(*)	100%	-	35.87	3.86









(*) Total acres may differ in the second decimal compared to the sum of each acreage soil. This is due to a round error because we only show the acres of each soil with two decimal.

Capability Legend

Increased Limitations and Hazards

Decreased Adaptability and Freedom of Choice Users

Land, Capability

								
	1	2	3	4	5	6	7	8
'Wild Life'	•	•	•	•	•	•	•	•
Forestry	•	•	•	•	•	•	•	
Limited	•	•	•	•	•	•	•	
Moderate	•	•	•	•	•	•		
Intense	•	•	•	•	•			
Limited	•	•	•	•				
Moderate	•	•	•					
Intense	•	•						
Very Intense	•							

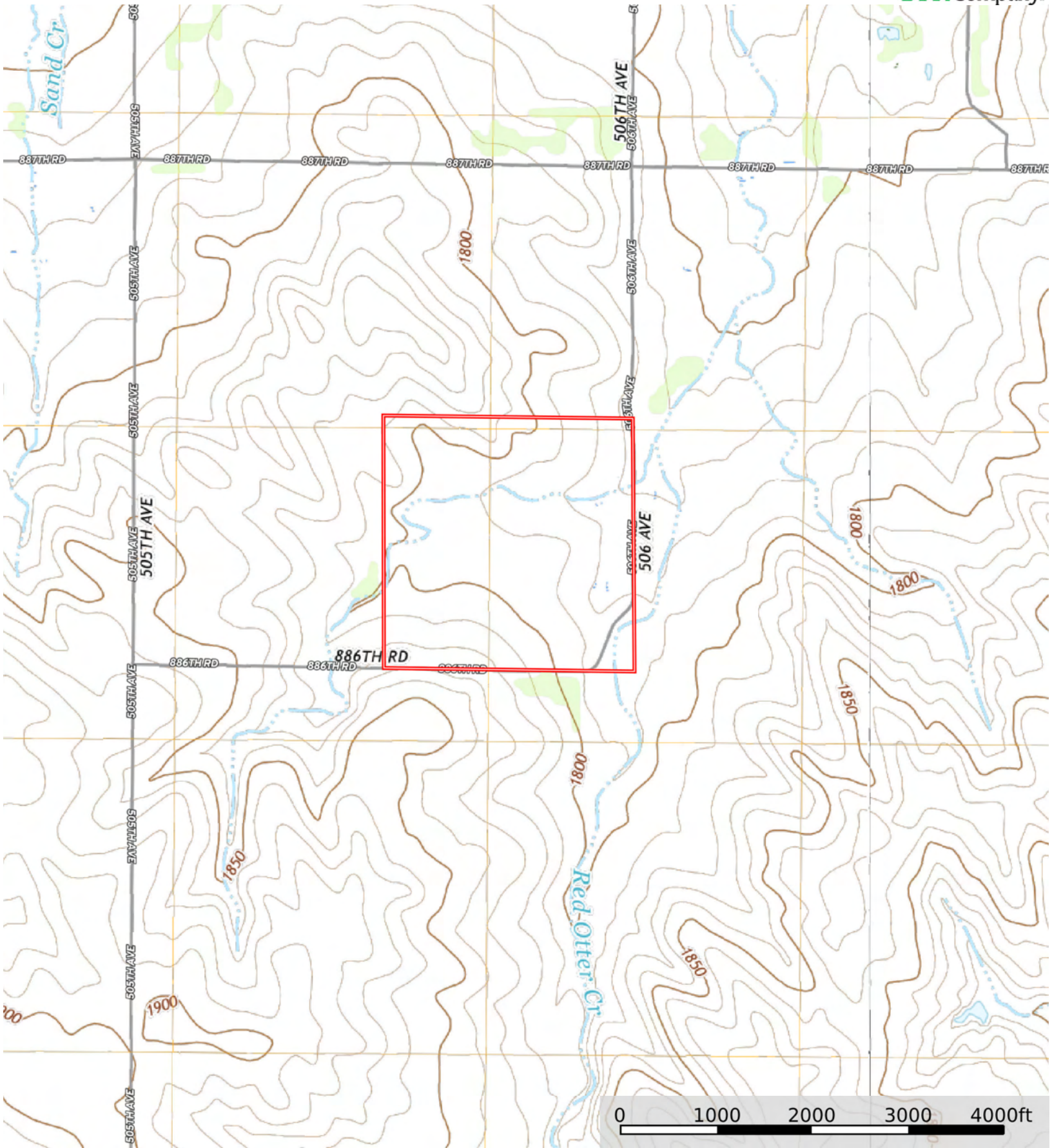
Grazing Cultivation

(c) climatic limitations (e) susceptibility to erosion

(s) soil limitations within the rooting zone (w) excess of water

L-2600258

Holt County, Nebraska, 159.25 AC +/-



Boundary