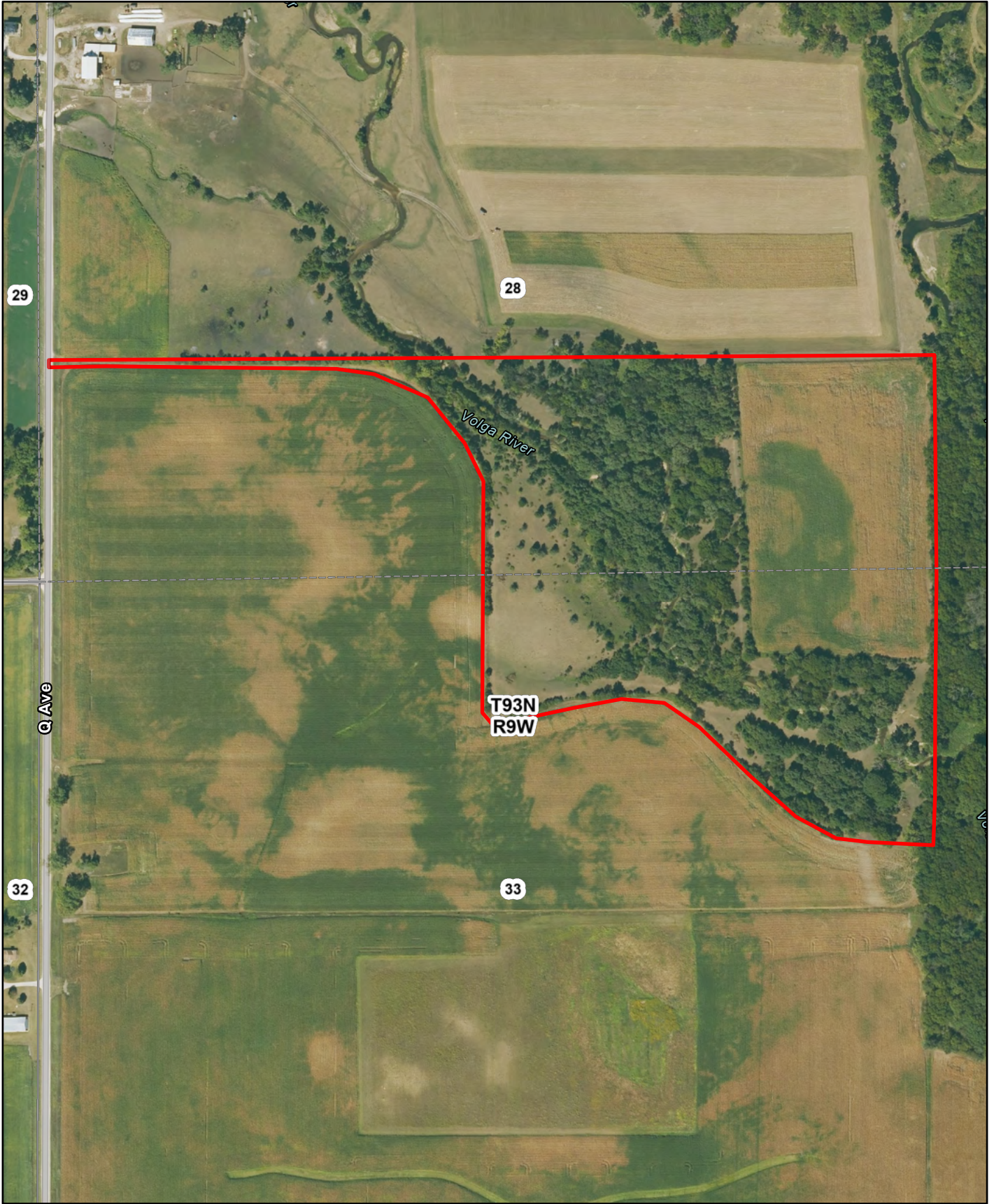


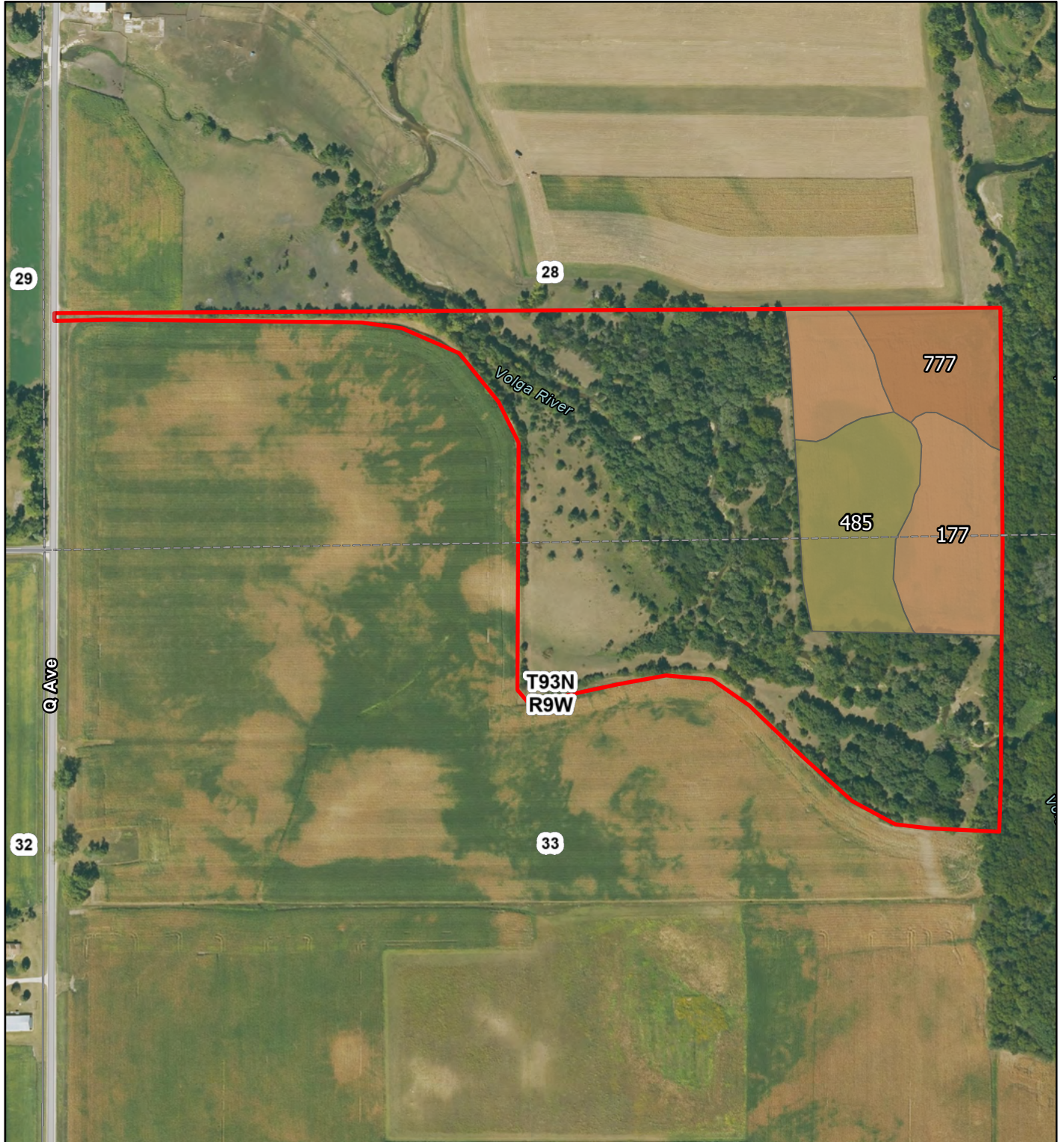
L-2600261
37.72 Ac
Fayette County, Iowa

Latitude: 42.8022°N
Longitude: 91.8953°W
Imagery Source: USDA NAIP
Soil Data Source: USDA NRCS
Boundaries are Approximate



L-2600261
37.72 Ac
Fayette County, Iowa

Latitude: 42.8325°N
Longitude: 91.9188°W
Imagery Source: USDA NAIP
Soil Data Source: USDA NRCS
Boundaries are Approximate



Map Symbol	Name	Non-IRR LCC	CSR2	ACRES
177	Saude loam, 0 to 2 percent slopes	2s	60	5.3
485	Spillville loam, 0 to 2 percent slopes, occasionally flooded	2w	76	3.9
777	Wapsie loam, 0 to 2 percent slopes	2s	49	2.6
TOTAL			62.9	11.8



L-2600261
37.72 Ac
Fayette County, Iowa

Latitude: 42.8325°N
Longitude: 91.9188°W
Imagery Source: USDA NAIP
Soil Data Source: USDA NRCS
Boundaries are Approximate

