



SCAN THE QR CODE
FOR MORE INFO!



LAND FOR SALE

3.255± Acres, Douglas County, Kansas

OFFERED AT
\$90,000

Highlights:

- Water and electric easily accessible
- Septic inspection already approved!
- More acreage available upon request



For additional information, please contact:
Jordan Olsen, Agent | (785) 766-2508
JOlsen@FarmersNational.com

Property Information

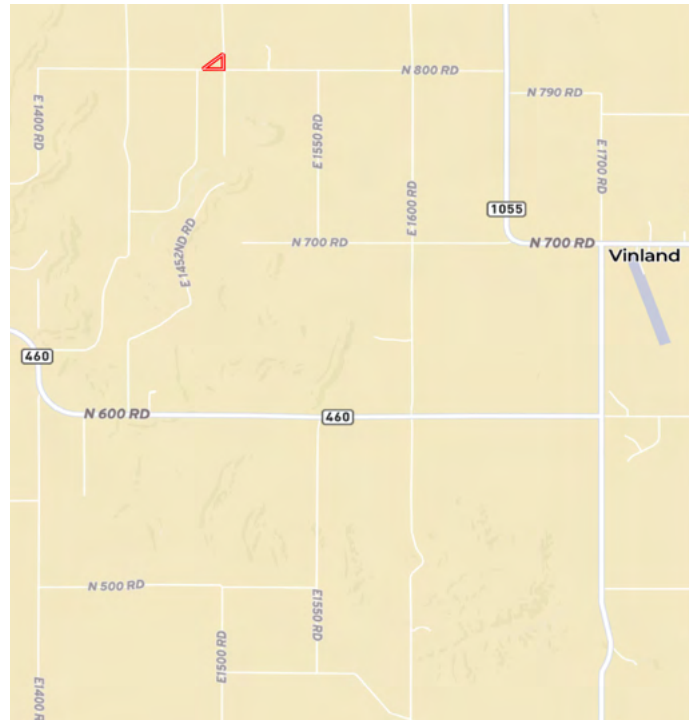
Directions to Property: From the junction of K-10 and Haskell Avenue in Lawrence, go approximately 5 miles south to N 800 Road. Haskell turns into E 1500 Road. Property is on the northwest corner of the intersection of N 800 Road and E 1500 Road.

Legal Description: Contact agent for survey for complete legal description.

Property Description: This 3.255 acre buildable parcel on blacktop sits just five miles south of Lawrence, Kansas. The perfect spot to enjoy the rural side of Douglas County without sacrificing the amenities of the city. Beautiful sunset views from the elevated corner put this parcel as a top prospect for the home builder in 2026. Survey has been completed. Septic Perc test has been completed and approved by DG County. More acres available upon request.

2025 Taxes: \$36.93 **Price:** \$90,000

Location Map



Aerial Map



Soil Map



SOIL CODE	SOIL DESCRIPTION	ACRES	%	CPI	NCCPI	CAP
7603	Sibleyville loam, 3 to 7 percent slopes	1.65	54.64	0	53	3e
7602	Sibleyville complex, 7 to 12 percent slopes	0.96	31.79	0	53	6e
7090	Wabash silty clay loam, occasionally flooded	0.41	13.58	0	50	3w
TOTALS		3.02(*)	100%	-	52.59	3.95

Information provided was obtained from sources deemed reliable, but the broker makes no guarantees as to its accuracy. All prospective buyers are urged to inspect the property, its title and to rely on their own conclusions. Seller reserves the right to refuse any or all offers submitted and may withdraw the property from offering without notice. Farmers National Company and its representatives on the reverse side are the Designated Agents for the seller.