

 Boundary



 Boundary



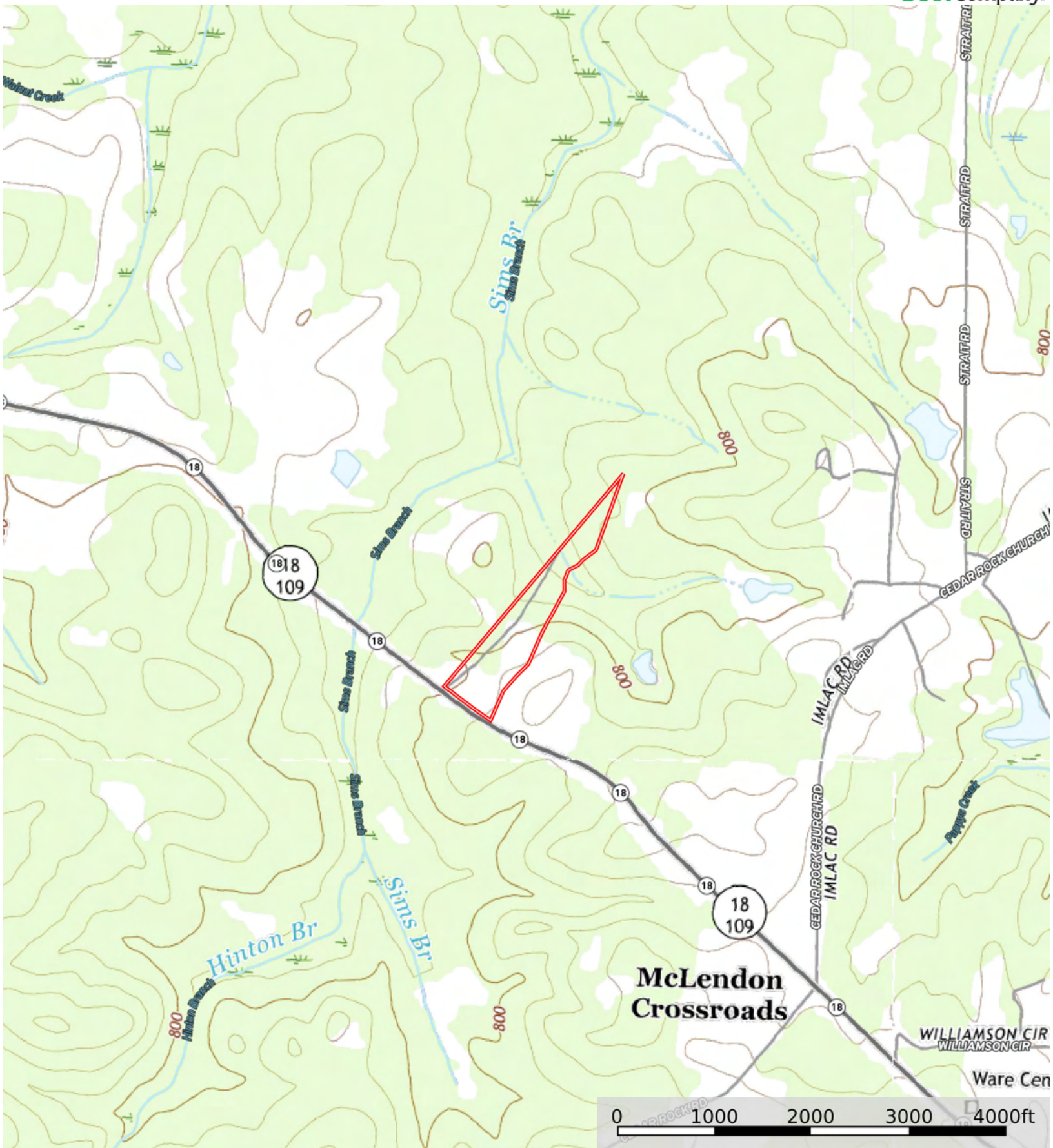
 Boundary

Boundary 22.12 ac

SOIL CODE	SOIL DESCRIPTION	ACRES	%	CPI	NCCPI	CAP
CZB3	Cecil sandy clay loam, 2 to 6 percent slopes, severely eroded	6.56	29.66	0	62	3e
CZC3	Cecil sandy clay loam, 6 to 10 percent slopes, severely eroded	6.19	27.98	0	64	4e
ApC2	Appling loamy sand, 6 to 10 percent slopes, eroded	5.24	23.69	0	68	3e
Alp	Chewacla, Cartecay, and Toccoa soils, 0 to 2 percent slopes, frequently flooded	1.37	6.19	0	55	4w
CZD3	Cecil sandy clay loam, 10 to 15 percent slopes, severely eroded	1.1	4.97	0	58	6e
CYB2	Cecil sandy loam, 2 to 6 percent slopes, moderately eroded	0.7	3.16	0	70	2e
LCC	Louisburg loamy coarse sand, 6 to 10 percent slopes	0.47	2.12	0	27	4e
LCD	Louisburg loamy coarse sand, 10 to 15 percent slopes	0.41	1.85	0	25	6e
CYC2	Cecil sandy loam, 6 to 10 percent slopes, moderately eroded	0.08	0.36	0	69	3e
TOTALS		22.12(*)	100%	-	62.2	3.54

(*) Total acres may differ in the second decimal compared to the sum of each acreage soil. This is due to a round error because we only show the acres of each soil with two decimal.





 Boundary