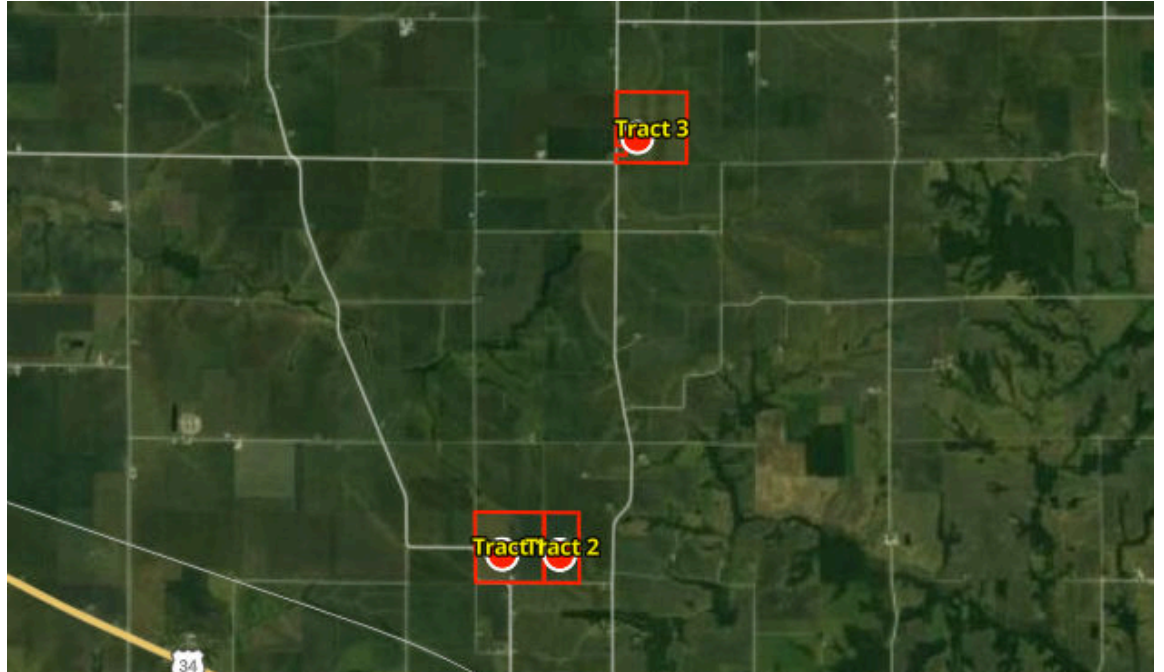


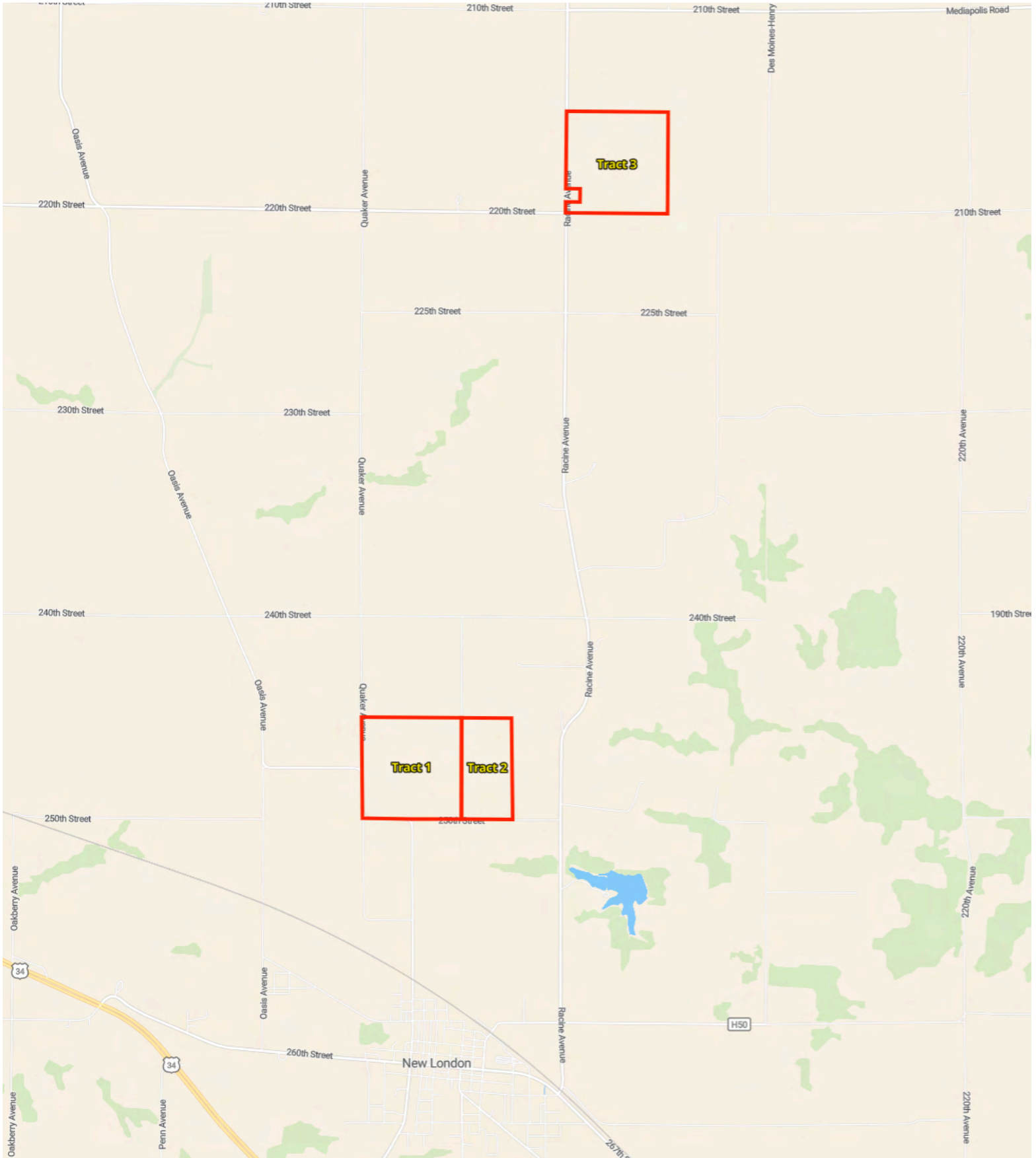


L-2600292

398.1 Acres



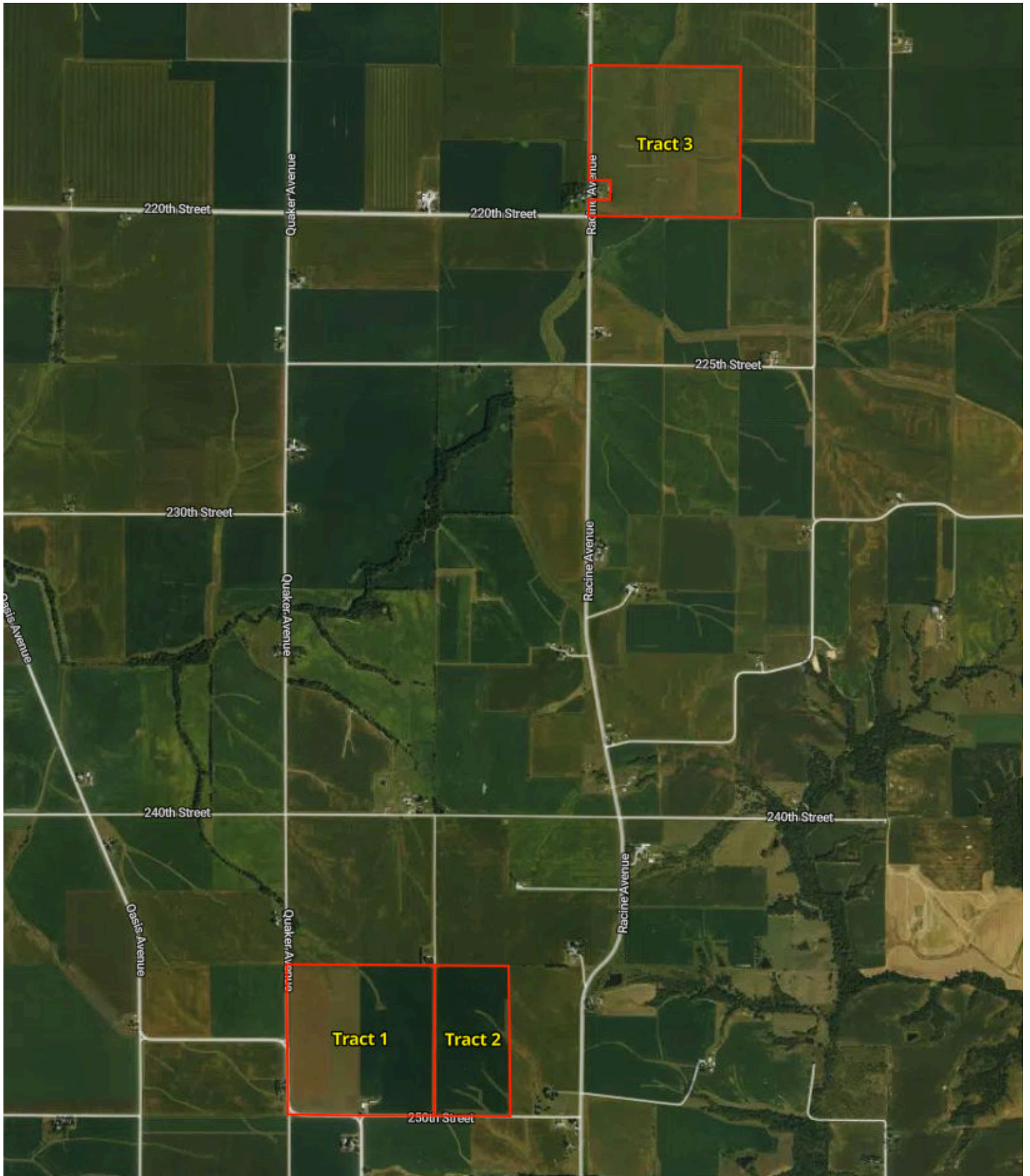
Farmers National Company



Property Overview



398.1 Acres, 3 Boundaries



Property Overview



Henry County, IA

158.4 Acres, Boundary 1 of 3



Henry County, IA
Township: 071N

Locations
14 71N 5W

Acres
158.37

Property Overview



Henry County, IA

80.5 Acres, Boundary 2 of 3



Henry County, IA
Township: 071N

Locations
14 71N 5W

Acres
80.47

Property Overview



Henry County, IA

159.2 Acres, Boundary 3 of 3



Henry County, IA
Township: 072N

Locations
36 72N 5W

Acres
159.22



87.1 / 100 CSR2

	Code	Soil Description	% of Selection	Acres	Non-IRR Class	IRR Class	State Score (CSR2)
●	280	Mahaska silty clay loam, 0 to 2 percent slopes	39.7%	157.8	1	--	94
●	279	Taintor silty clay loam, 0 to 2 percent slopes	14.0%	55.9	2w	--	83
●	280B	Mahaska silty clay loam, 2 to 5 percent slopes	11.5%	45.8	2e	--	89
●	133	Colo silty clay loam, 0 to 2 percent slopes, occasionally flooded	10.3%	40.9	2w	--	78
●	133B	Colo silty clay loam, 2 to 5 percent slopes, occasionally flooded	8.7%	34.8	2w	--	75

Soils



398.1 Acres, 3 Boundaries

	Code	Soil Description	% of Selection	Acres	Non-IRR Class	IRR Class	State Score (CSR2)
●	281B	Otley silty clay loam, 2 to 5 percent slopes	8.0%	32	2e	--	91
●	281...	Otley silty clay loam, 5 to 9 percent slopes, eroded	3.9%	15.7	3e	--	82
●	570...	Nira silty clay loam, 5 to 9 percent slopes, moderately eroded	2.3%	9.2	3e	--	73
●	571...	Hedrick silt loam, 5 to 9 percent slopes, moderately eroded	1.5%	5.9	3e	--	75
●	281C	Otley silty clay loam, 5 to 9 percent slopes	<0.1%	0.1	3e	--	85

Soils by Boundary

158.4 Acres, Boundary 1 of 3



90.1 / 100 CSR2

	Code	Soil Description	% of Selection	Acres	Non-IRR Class	IRR Class	State Score (CSR2)
●	280	Mahaska silty clay loam, 0 to 2 percent slopes	62.2%	98.5	1	--	94
●	279	Taintor silty clay loam, 0 to 2 percent slopes	17.9%	28.3	2w	--	83
●	280B	Mahaska silty clay loam, 2 to 5 percent slopes	14.1%	22.3	2e	--	89
●	570...	Nira silty clay loam, 5 to 9 percent slopes, moderately eroded	5.8%	9.2	3e	--	73
●	281C	Otley silty clay loam, 5 to 9 percent slopes	0.1%	0.1	3e	--	85

Soils by Boundary

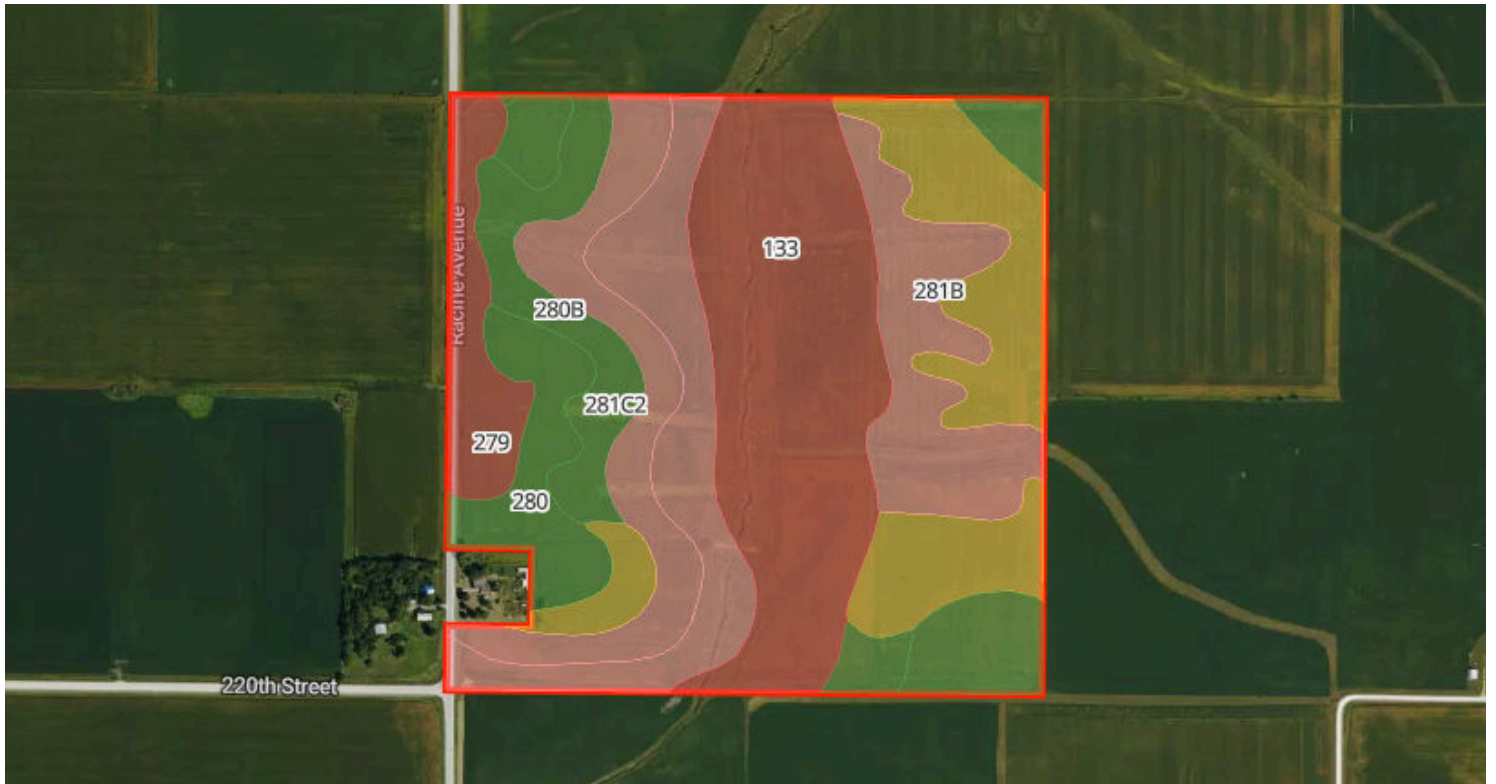


89.2/100 CSR2

	Code	Soil Description	% of Selection	Acres	Non-IRR Class	IRR Class	State Score (CSR2)
●	280	Mahaska silty clay loam, 0 to 2 percent slopes	48.6%	39.1	1	--	94
●	279	Taintor silty clay loam, 0 to 2 percent slopes	23.3%	18.7	2w	--	83
●	280B	Mahaska silty clay loam, 2 to 5 percent slopes	12.8%	10.3	2e	--	89
●	281B	Otley silty clay loam, 2 to 5 percent slopes	8.0%	6.5	2e	--	91
●	571...	Hedrick silt loam, 5 to 9 percent slopes, moderately eroded	7.3%	5.9	3e	--	75

Soils by Boundary

159.2 Acres, Boundary 3 of 3



83/100 CSR2

	Code	Soil Description	% of Selection	Acres	Non-IRR Class	IRR Class	State Score (CSR2)
●	133	Colo silty clay loam, 0 to 2 percent slopes, occasionally flooded	25.7%	40.9	2w	--	78
●	133B	Colo silty clay loam, 2 to 5 percent slopes, occasionally flooded	21.8%	34.8	2w	--	75
●	281B	Otley silty clay loam, 2 to 5 percent slopes	16.0%	25.5	2e	--	91
●	280	Mahaska silty clay loam, 0 to 2 percent slopes	12.7%	20.3	1	--	94
●	281...	Otley silty clay loam, 5 to 9 percent slopes, eroded	9.9%	15.7	3e	--	82

Soils

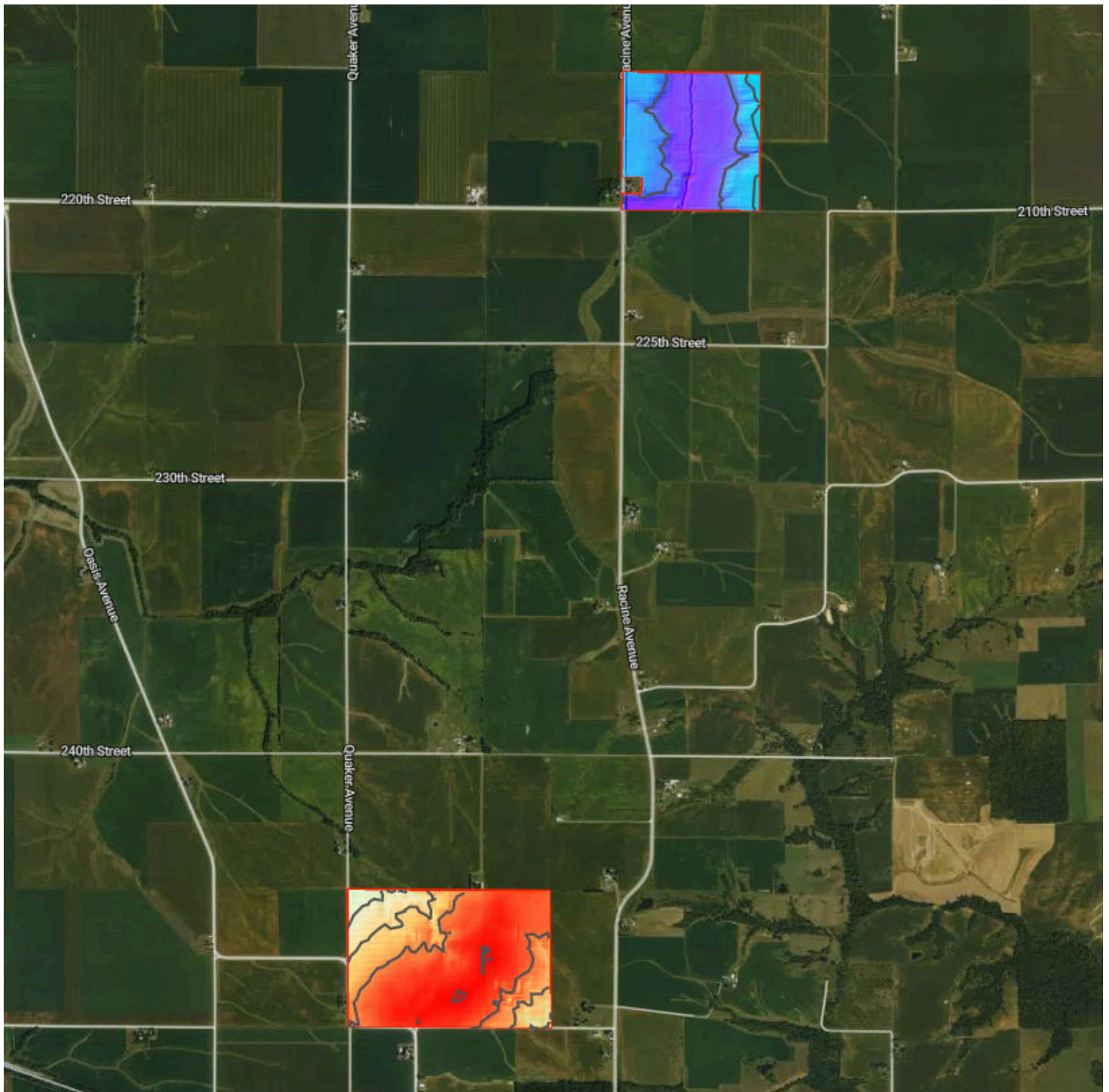


159.2 Acres, Boundary 3 of 3

	Code	Soil Description	% of Selection	Acres	Non-IRR Class	IRR Class	State Score (CSR2)
●	280B	Mahaska silty clay loam, 2 to 5 percent slopes	8.3%	13.2	2e	--	89
●	279	Taintor silty clay loam, 0 to 2 percent slopes	5.6%	8.9	2w	--	83

Elevation

398.1 Acres, 3 Boundaries



709.4 feet

800.9 feet

Source: USGS 3 Meter Dem

Interval: 10 feet

Range: 91.5 feet

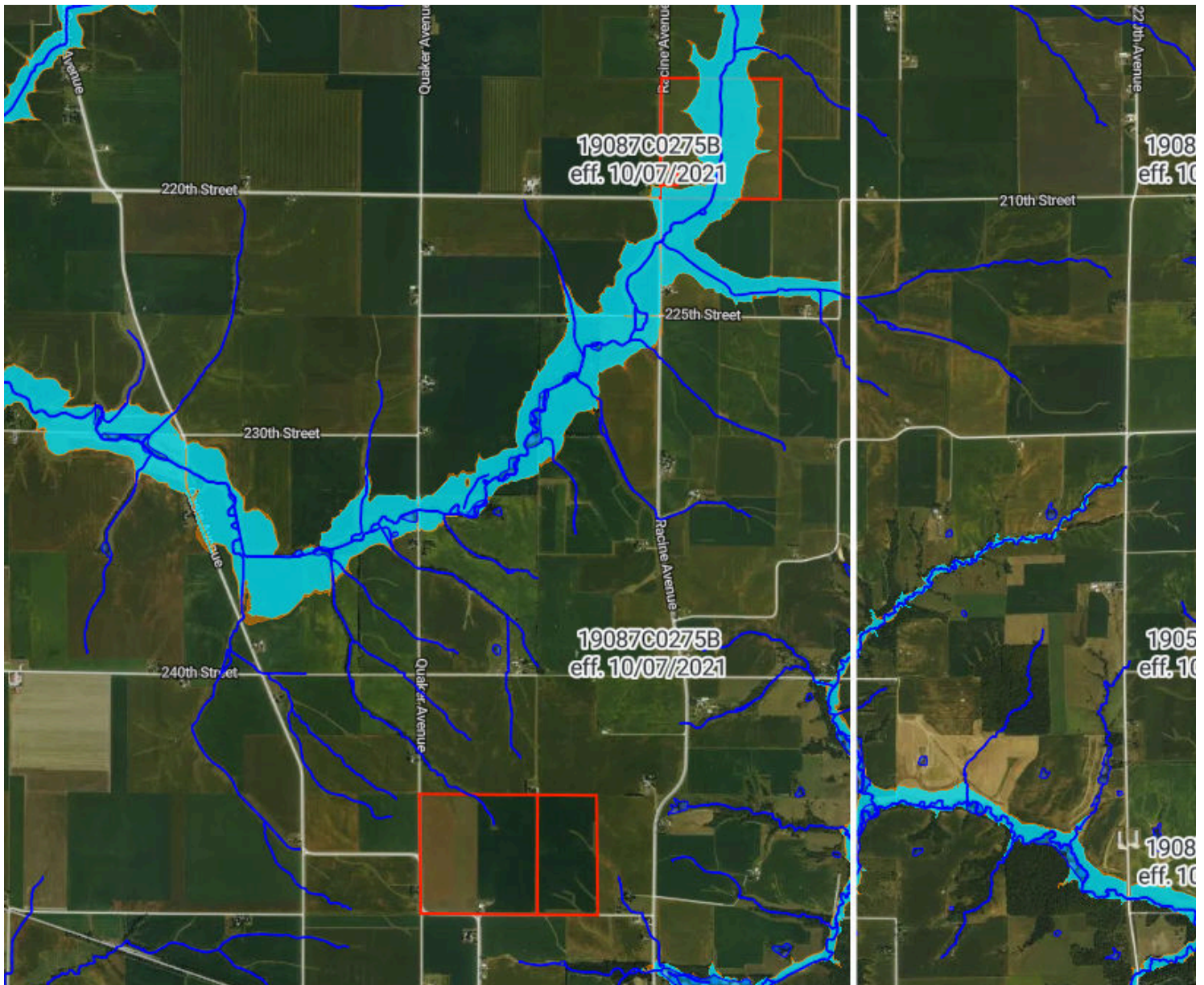
Min: 709.4 feet

Max: 800.9 feet









Slope: 1.4%

Min: 0%

Max: 9.8%



Flood Zone Hazard

-  0.2% annual flood hazard
-  1% annual flood hazard
-  Future 1% annual flood hazard
-  Increased risk due to levee
-  Reduced risk due to levee
-  Regulatory Floodway
-  Special Floodway
-  Wetlands