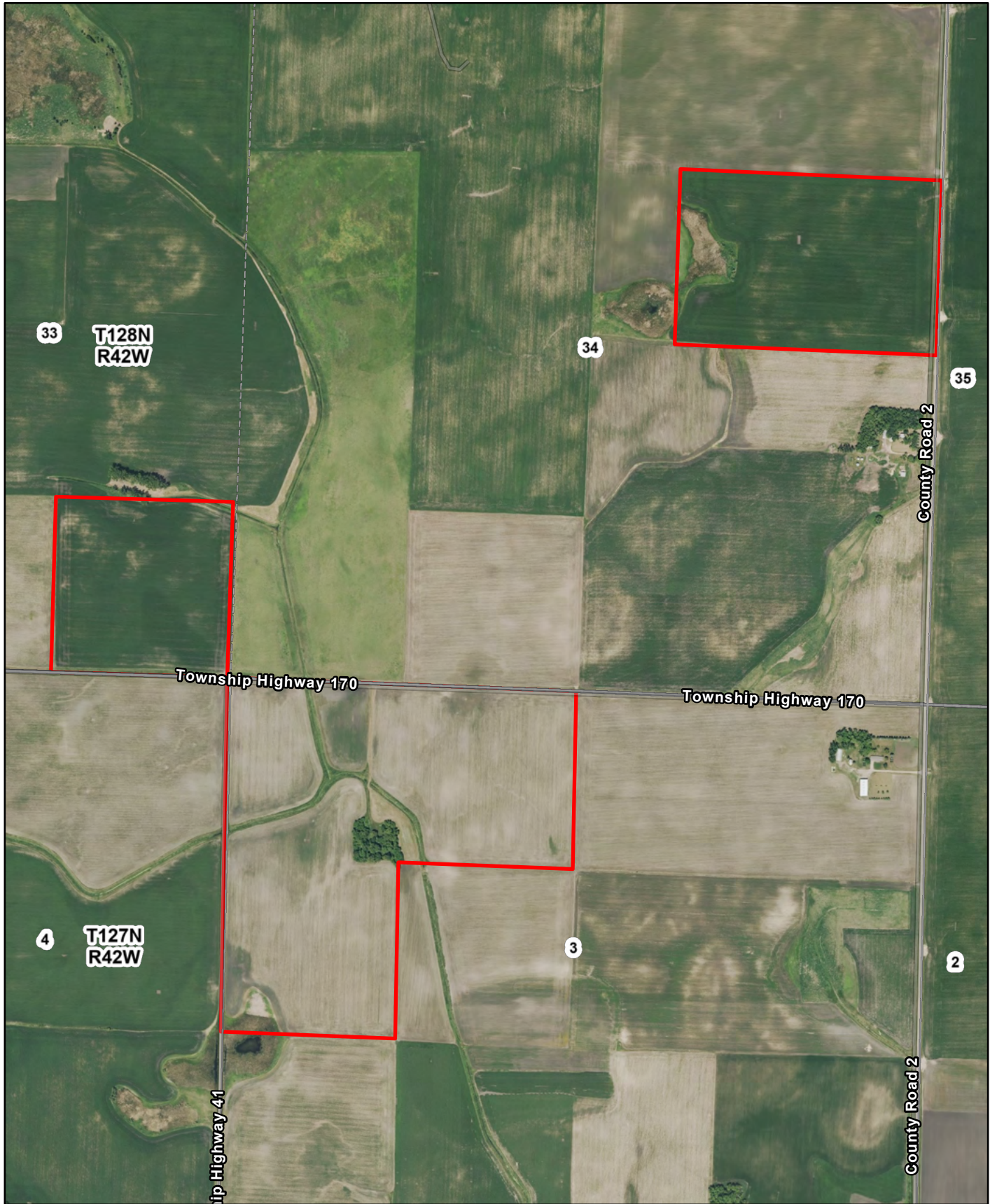


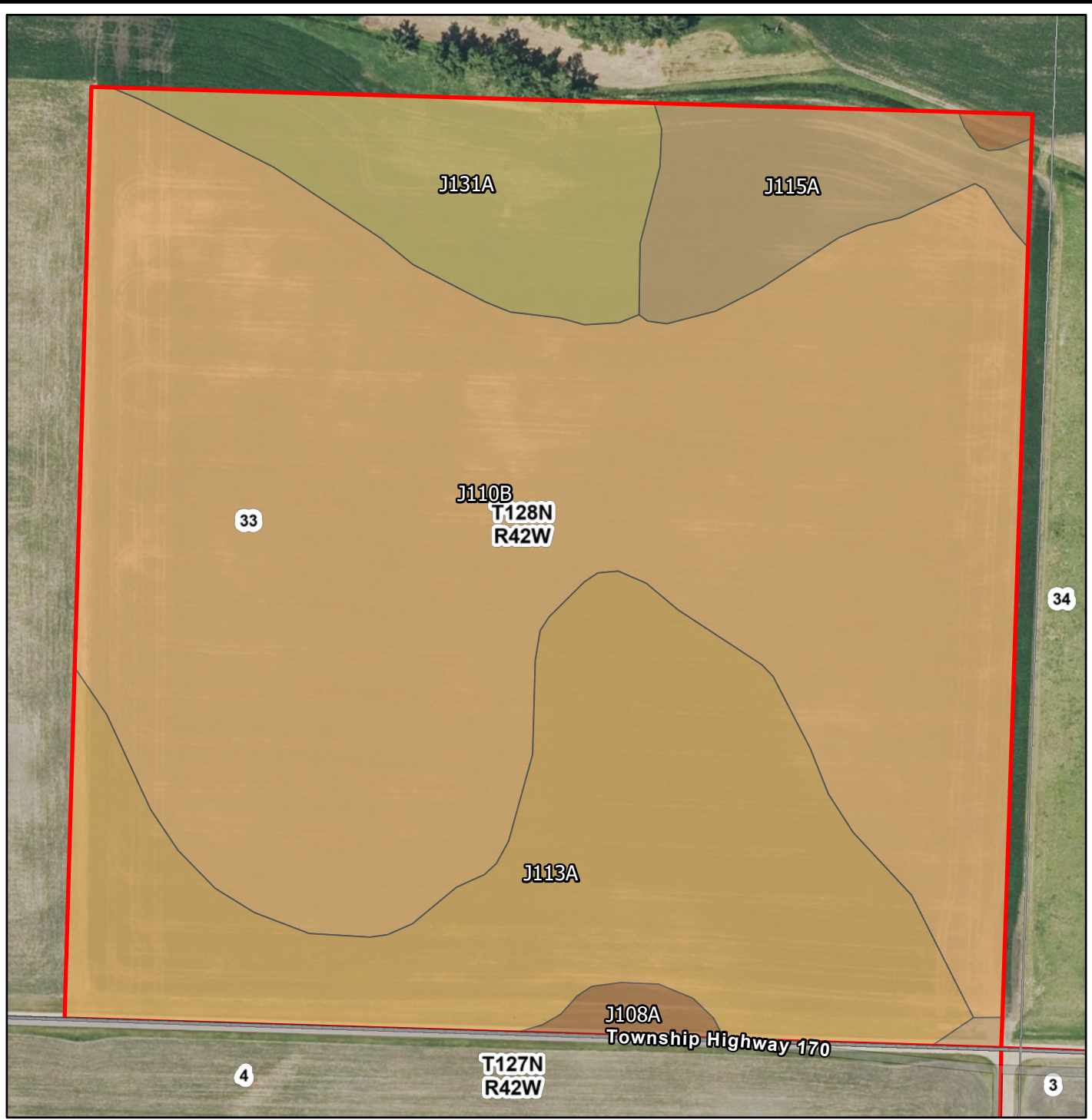
**L-2600296**  
**220 Ac**  
**Grant County, Minnesota**

Latitude: 45.8735°N  
 Longitude: 95.9197°W  
 Imagery Source: USDA NAIP  
 Soil Data Source: USDA NRCS  
 Boundaries are Approximate



**L-2600296**  
**220 Ac**  
**Grant County, Minnesota**

Latitude: 45.8485°N  
Longitude: 95.9369°W  
Imagery Source: USDA NAIP  
Soil Data Source: USDA NRCS  
Boundaries are Approximate

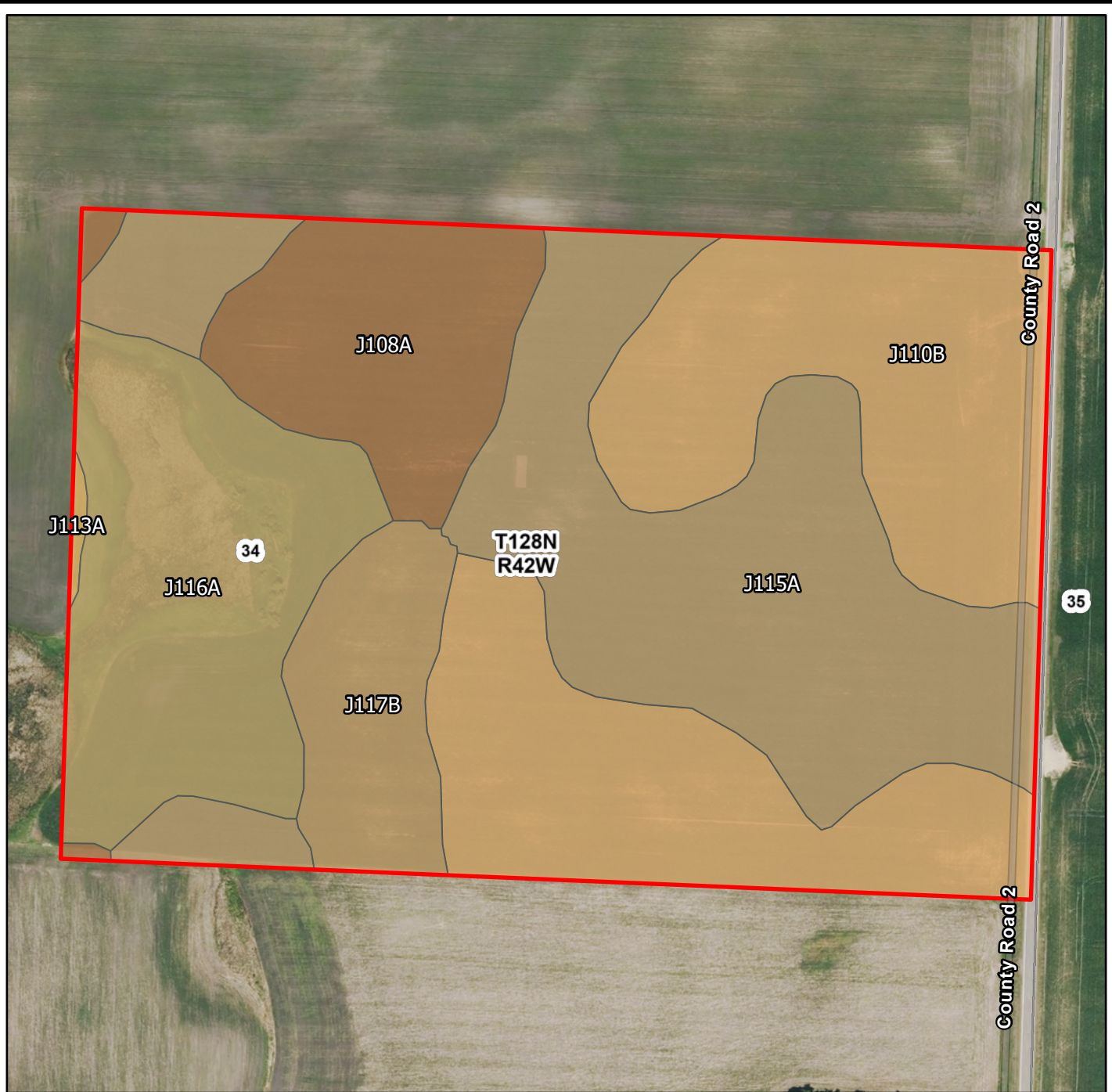


Map Symbol	Name	Non-IRR LCC	PRODUCTIVITY INDEX	ACRES
J110B	Aazdahl-Formdale-Balaton clay loams, 0 to 4 percent slopes	2c	93	24.9
J113A	Flom-Aazdahl-Hamerly complex, 0 to 2 percent slopes	3w	88	9.6
J131A	Quam silty clay loam, 0 to 1 percent slopes, occasionally ponded	3w	80	3.3
J115A	Flom-Hamerly complex, 0 to 2 percent slopes	3w	90	2.5
J108A	Aazdahl-Balaton clay loams, 0 to 2 percent slopes	2c	97	0.4
TOTAL			90.6	40.7



**L-2600296**  
**220 Ac**  
**Grant County, Minnesota**

Latitude: 45.8486°N  
 Longitude: 95.9474°W  
 Imagery Source: USDA NAIP  
 Soil Data Source: USDA NRCS  
 Boundaries are Approximate

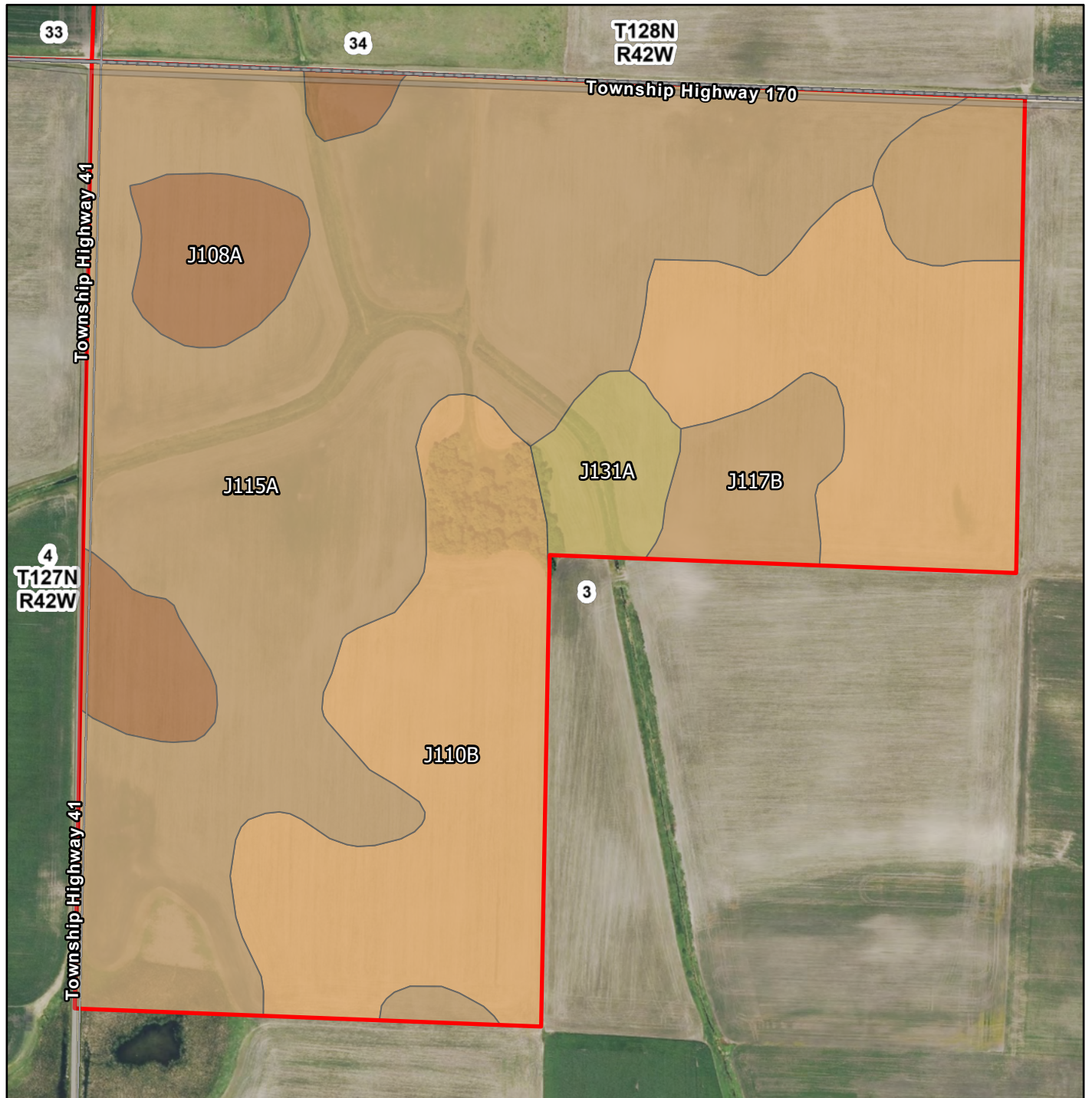


Map Symbol	Name	Non-IRR LCC	PRODUCTIVITY INDEX	ACRES
J110B	Aazdahl-Formdale-Balaton clay loams, 0 to 4 percent slopes	2c	93	20.3
J115A	Flom-Hamerly complex, 0 to 2 percent slopes	3w	90	18
J116A	Flom-Quam silty clay loams, 0 to 1 percent slopes, occasionally ponded	3w	86	10.6
J108A	Aazdahl-Balaton clay loams, 0 to 2 percent slopes	2c	97	6.7
J117B	Hokans-Svea complex, 2 to 6 percent slopes	2e	99	4.4
J113A	Flom-Aazdahl-Hamerly complex, 0 to 2 percent slopes	3w	88	0.2
TOTAL			91.7	60.2



**L-2600296**  
**220 Ac**  
**Grant County, Minnesota**

Latitude: 45.8558°N  
 Longitude: 95.928°W  
 Imagery Source: USDA NAIP  
 Soil Data Source: USDA NRCS  
 Boundaries are Approximate

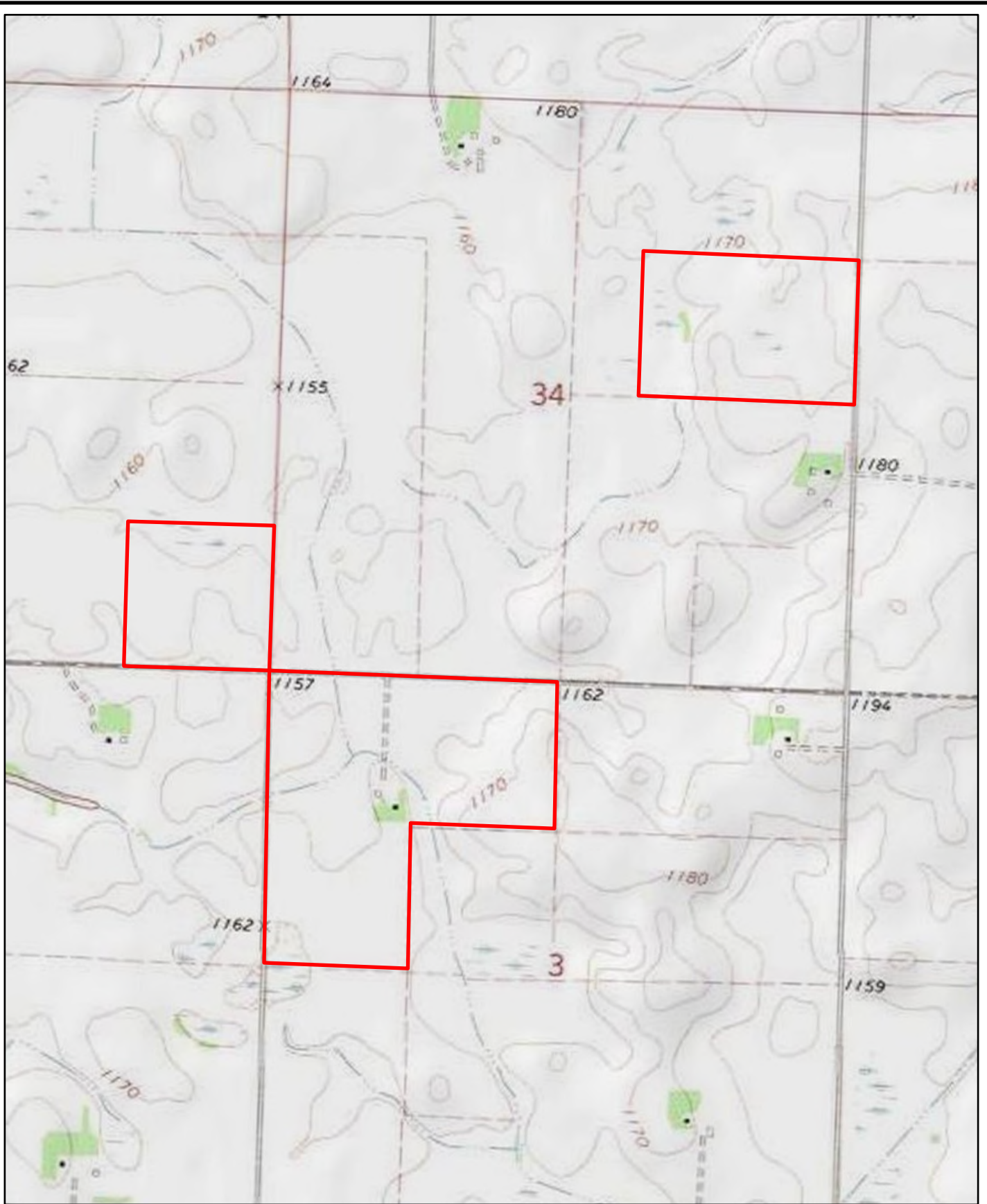


Map Symbol	Name	Non-IRR LCC	PRODUCTIVITY INDEX	ACRES
J115A	Flom-Hamerly complex, 0 to 2 percent slopes	3w	90	62.4
J110B	Aazdahl-Formdale-Balaton clay loams, 0 to 4 percent slopes	2c	93	38.3
J108A	Aazdahl-Balaton clay loams, 0 to 2 percent slopes	2c	97	8.8
J117B	Hokans-Svea complex, 2 to 6 percent slopes	2e	99	8.6
J131A	Quam silty clay loam, 0 to 1 percent slopes, occasionally ponded	3w	80	3.8
TOTAL			91.8	121.9



**L-2600296**  
**220 Ac**  
**Grant County, Minnesota**

Latitude: 45.8431°N  
Longitude: 95.9395°W  
Imagery Source: USDA NAIP  
Soil Data Source: USDA NRCS  
Boundaries are Approximate



**L-2600296**  
**220 Ac**  
**Grant County, Minnesota**

Latitude: 45.8485°N  
Longitude: 95.9369°W  
Imagery Source: USDA NAIP  
Soil Data Source: USDA NRCS  
Boundaries are Approximate