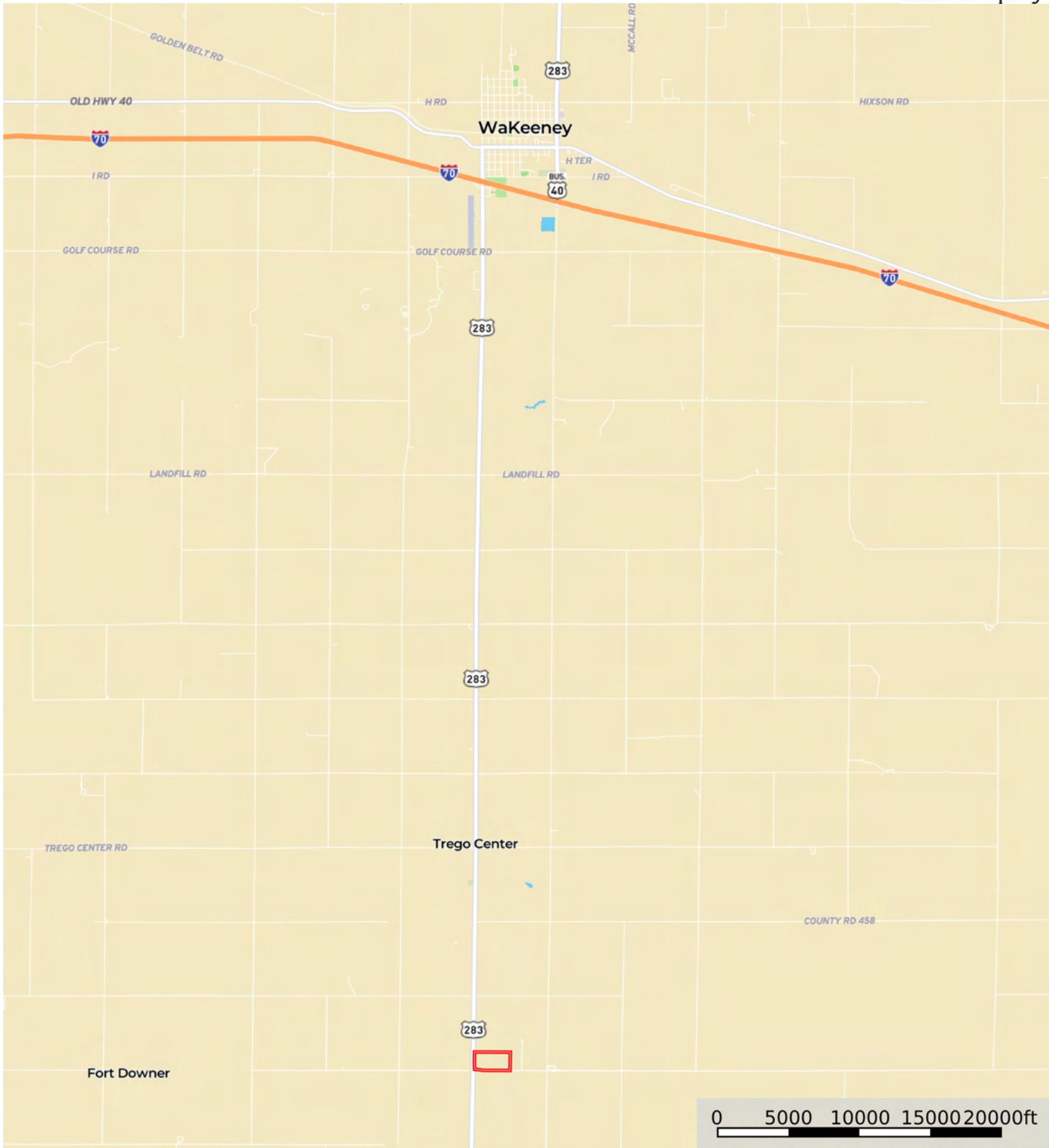


L-2600298

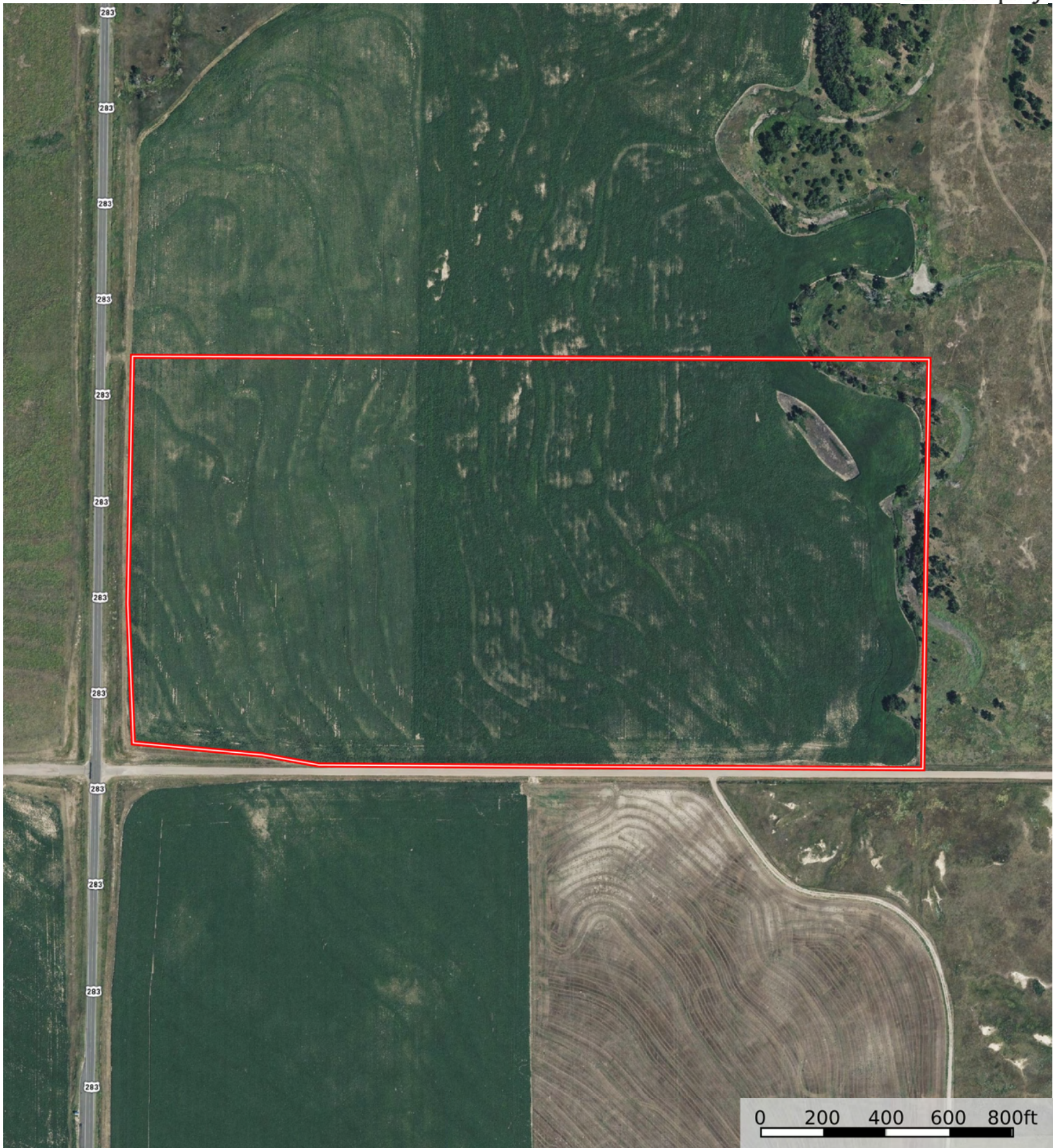
Trego County, Kansas, 74.8 AC +/-



 Boundary

L-2600298

Trego County, Kansas, 74.8 AC +/-



 Boundary

0 200 400 600 800ft



 Boundary

0 200 400 600 800ft



The information contained herein was obtained from sources deemed to be reliable. Land id® Services makes no warranties or guarantees as to the completeness or accuracy thereof.

Boundary 74.85 ac

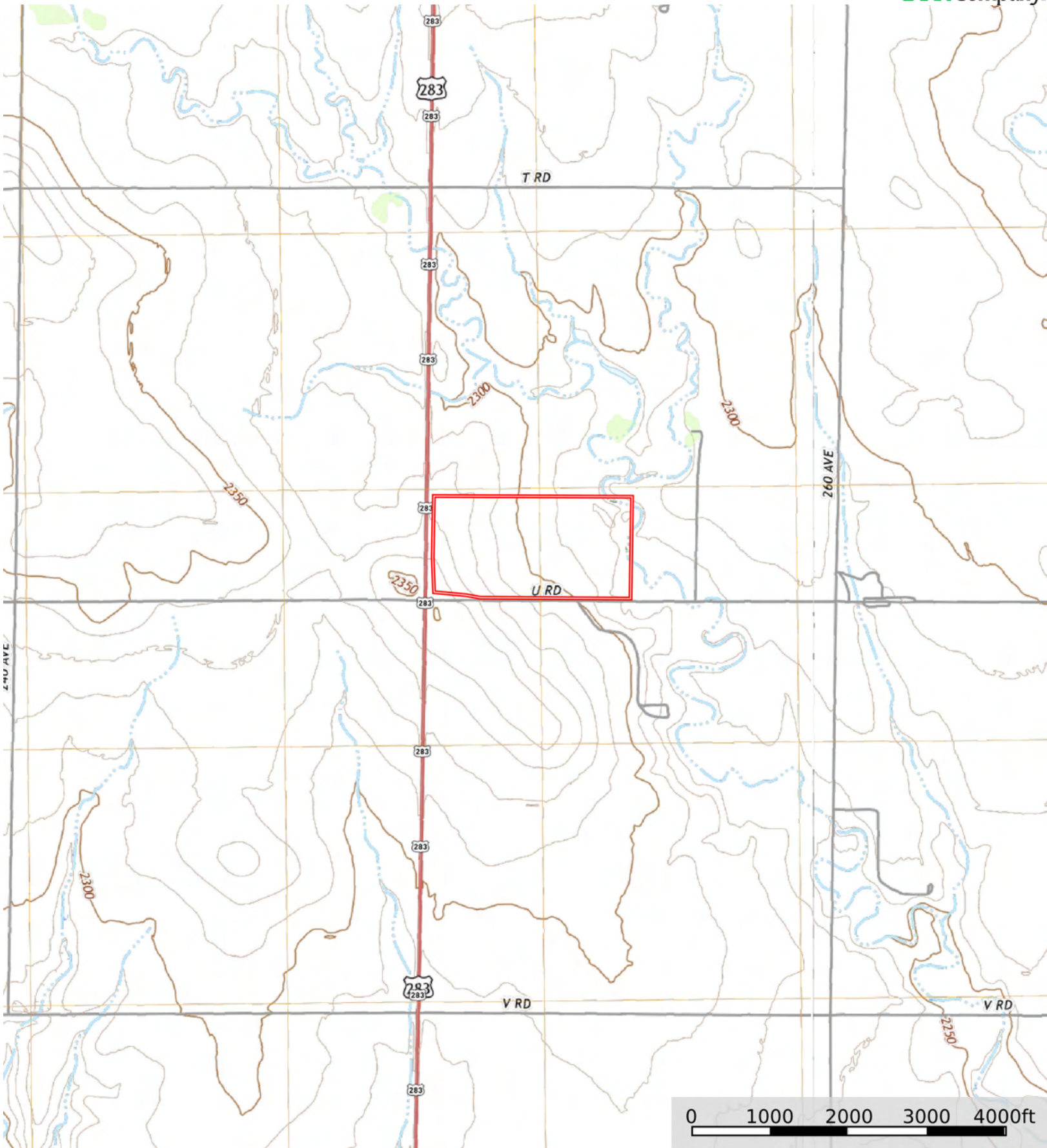
| SOIL CODE | SOIL DESCRIPTION | ACRES | % | CPI | NCCPI | CAP |
|-----------|--|----------|-------|-----|-------|------|
| 2519 | Armo loam, 3 to 7 percent slopes | 32.37 | 43.25 | 0 | 57 | 3e |
| 2518 | Armo loam, 1 to 3 percent slopes | 28.12 | 37.57 | 0 | 58 | 2e |
| 2747 | Penden clay loam, 3 to 7 percent slopes | 6.64 | 8.87 | 0 | 63 | 3e |
| 3765 | Humbarger loam, channeled | 5.86 | 7.83 | 0 | 41 | 5w |
| 2521 | Armo loam, 7 to 15 percent slopes | 1.72 | 2.3 | 0 | 54 | 6e |
| 2574 | Carlson silt loam, 1 to 3 percent slopes | 0.14 | 0.19 | 0 | 70 | 2e |
| TOTALS | | 74.85(*) | 100% | - | 56.62 | 2.85 |


(*) Total acres may differ in the second decimal compared to the sum of each acreage soil. This is due to a round error because we only show the acres of each soil with two decimal.



L-2600298

Trego County, Kansas, 74.8 AC +/-



 Boundary