

SCAN THE QR CODE
FOR MORE INFO!



LAND FOR SALE

58.5± Acres, Harvey County, Kansas

OFFERED AT
\$438,750

Highlights:

- Direct access from HWY 15
- High quality cropland
- Close to Hesston and Newton



For additional information, please contact:
Van Schmidt, Agent | (620) 345-6879
VSchmidt@FarmersNational.com

Property Information

Property Description: Located just outside of Hesston in Harvey County, this 58± acre tract offers high-quality, highly productive Kansas cropland with excellent agronomic characteristics. The property features gently rolling to nearly level topography with 0–1% slopes, making it ideal for efficient modern farming practices.

The soils consist of approximately 75% Ladysmith Silty Clay Loam and 25% Goessel Silty Clay, both well-regarded soils in the region known for strong moisture-holding capacity and consistent crop performance.

With its close proximity to Newton and other surrounding towns, this tract provides easy access to local markets, elevators, and farm services while remaining in a proven agricultural area. Don't miss this opportunity to expand your farming operation or ag land investment portfolio!

Directions to Property:

From Hesston, head east on West Dutch Ave to HWY 15. North on HWY 15 1/2 Mile to property.

Legal Description: East 58 Acres in the S2NW4 of 8-22-1E

Farm Data:

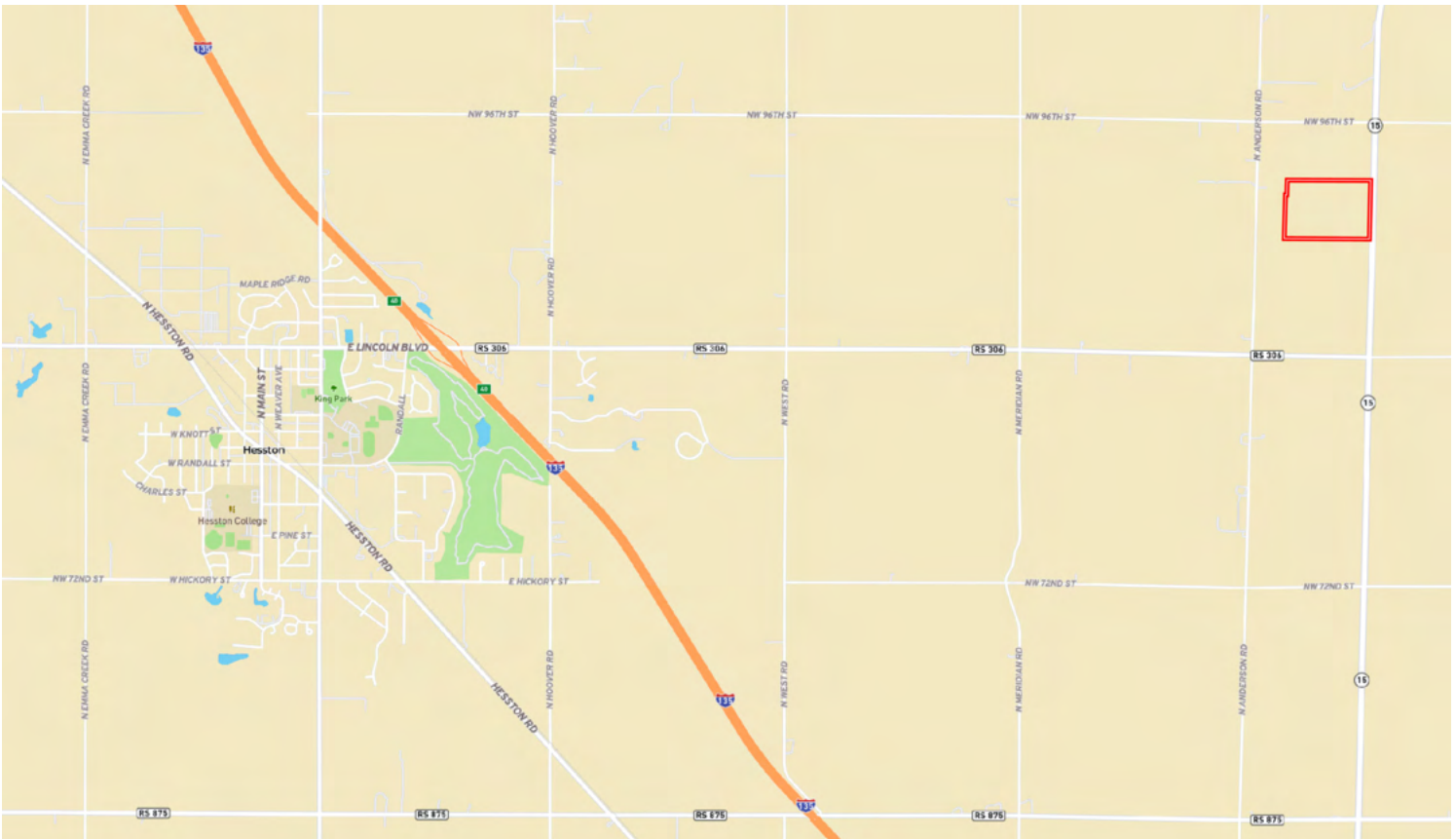
Cropland	58.5 acres
Total	58.5 acres

2025 Taxes:

\$611.32

Price: \$438,750

Location Map



Information provided was obtained from sources deemed reliable, but the broker makes no guarantees as to its accuracy. All prospective buyers are urged to inspect the property, its title and to rely on their own conclusions. Seller reserves the right to refuse any or all offers submitted and may withdraw the property from offering without notice. Farmers National Company and its representatives on the reverse side are the Designated Agents for the seller.

Soil Map



|  Boundary 58.46 ac

SOIL CODE	SOIL DESCRIPTION	ACRES	%	CPI	NCCPI	CAP
3890	Ladysmith silty clay loam, 0 to 1 percent slopes	43.61	74.61	0	53	2s
3857	Goessel silty clay, 0 to 1 percent slopes	14.85	25.41	0	50	2s
TOTALS		58.46(*)	100%	-	52.25	2.0

(*) Total acres may differ in the second decimal compared to the sum of each acreage soil. This is due to a round error because we only show the acres of each soil with two decimal.

LAND FOR SALE

58.5± Acres, Harvey County, Kansas



SCAN THE QR CODE
FOR MORE INFO!



www.FarmersNational.com

Real Estate Sales • Farm and Ranch Management • Energy Management
Appraisals • Insurance • Consultations • Forestry Management • Hunting Lease Network • FNC Securities