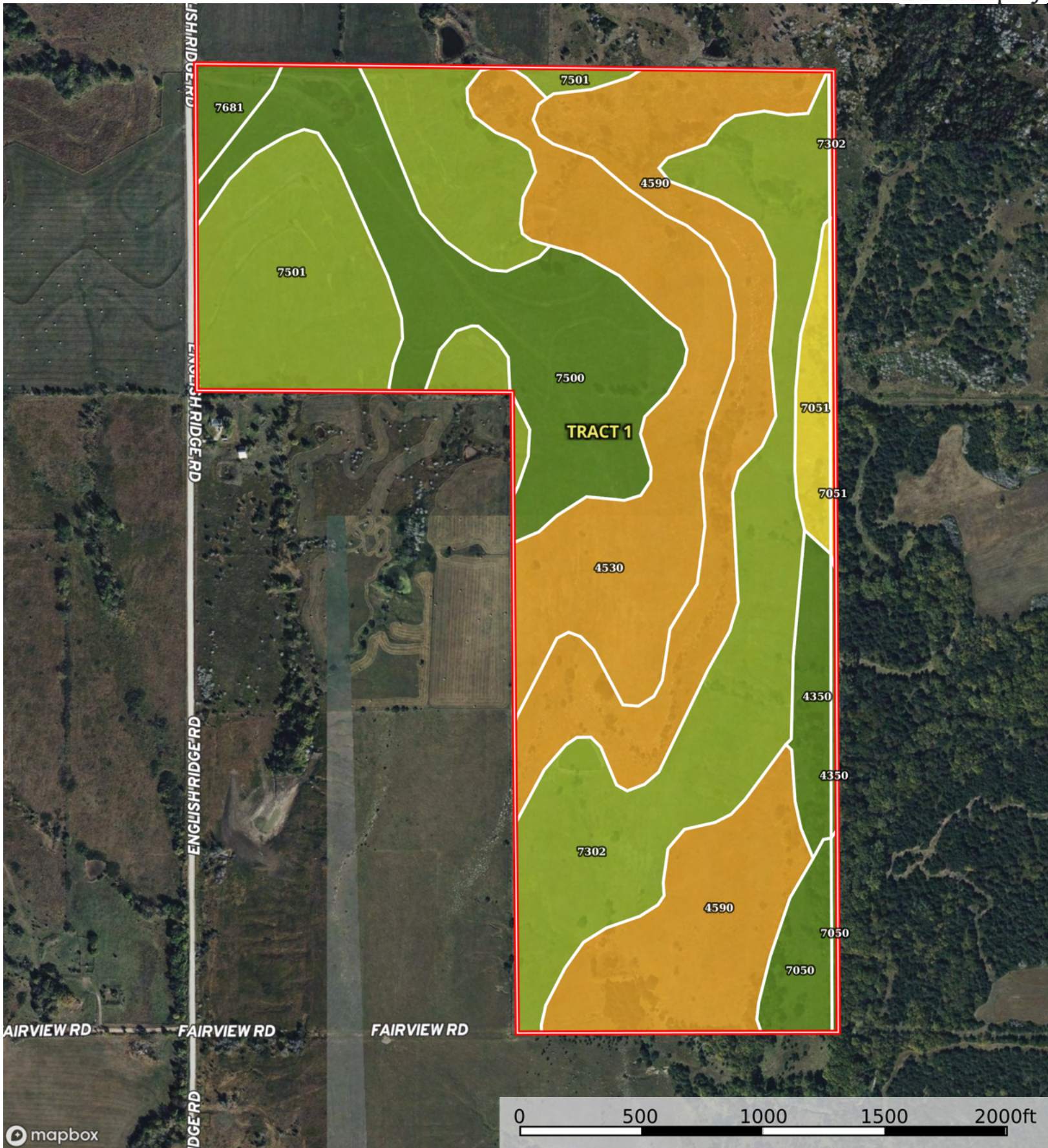


Boundary



Boundary

Boundary 160.89 ac

SOIL CODE	SOIL DESCRIPTION	ACRES	%	CPI	NCCPI	CAP
4590	Clime-Sogn complex, 3 to 20 percent slopes	37.88	23.55	0	34	6e
7302	Martin silty clay loam, 3 to 7 percent slopes	30.94	19.23	0	53	3e
7501	Pawnee clay loam, 4 to 8 percent slopes, eroded	27.47	17.07	0	46	3e
7500	Pawnee clay loam, 1 to 4 percent slopes	25.06	15.58	0	51	2e
4530	Benfield-Florence complex, 5 to 30 percent slopes	24.27	15.09	0	36	6e
4350	Chase silty clay loam, rarely flooded	4.76	2.96	0	71	2w
7050	Kennebec silt loam, occasionally flooded	4.28	2.66	0	94	2w
7051	Kennebec silt loam, frequently flooded	4.03	2.5	0	64	5w
7681	Wymore silty clay loam, 1 to 3 percent slopes	2.2	1.37	0	64	2e
TOTALS		160.89(*)	100%	-	46.51	3.98

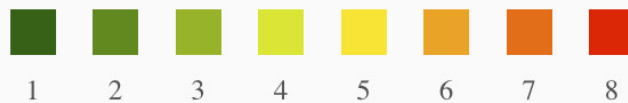
(\*) Total acres may differ in the second decimal compared to the sum of each acreage soil. This is due to a round error because we only show the acres of each soil with two decimal.

### Capability Legend

Increased Limitations and Hazards

Decreased Adaptability and Freedom of Choice Users

Land, Capability

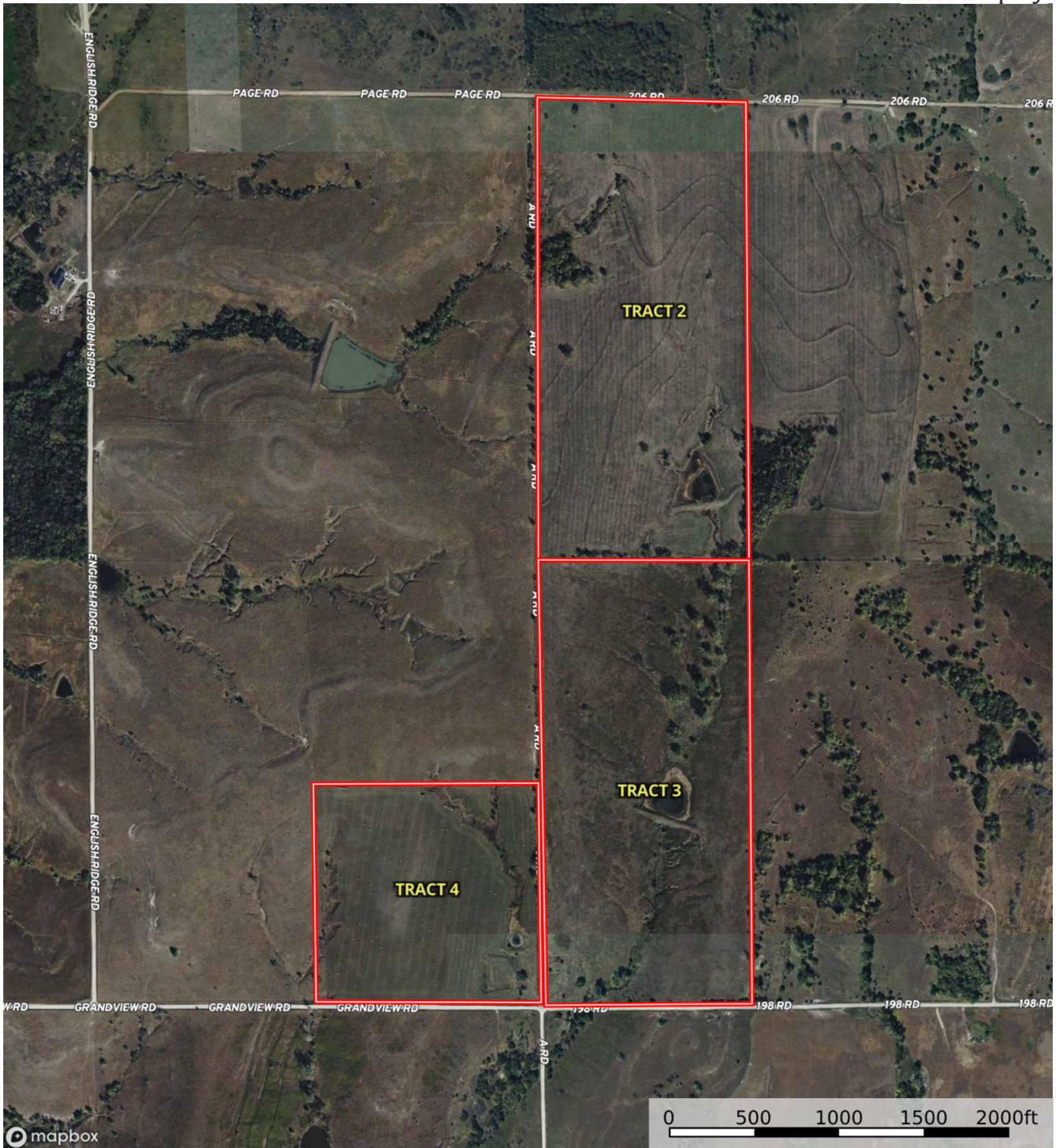


	1	2	3	4	5	6	7	8
'Wild Life'	•	•	•	•	•	•	•	•
Forestry	•	•	•	•	•	•	•	
Limited	•	•	•	•	•	•	•	
Moderate	•	•	•	•	•	•		
Intense	•	•	•	•	•			
Limited	•	•	•	•				
Moderate	•	•	•					
Intense	•	•						
Very Intense	•							

### Grazing Cultivation

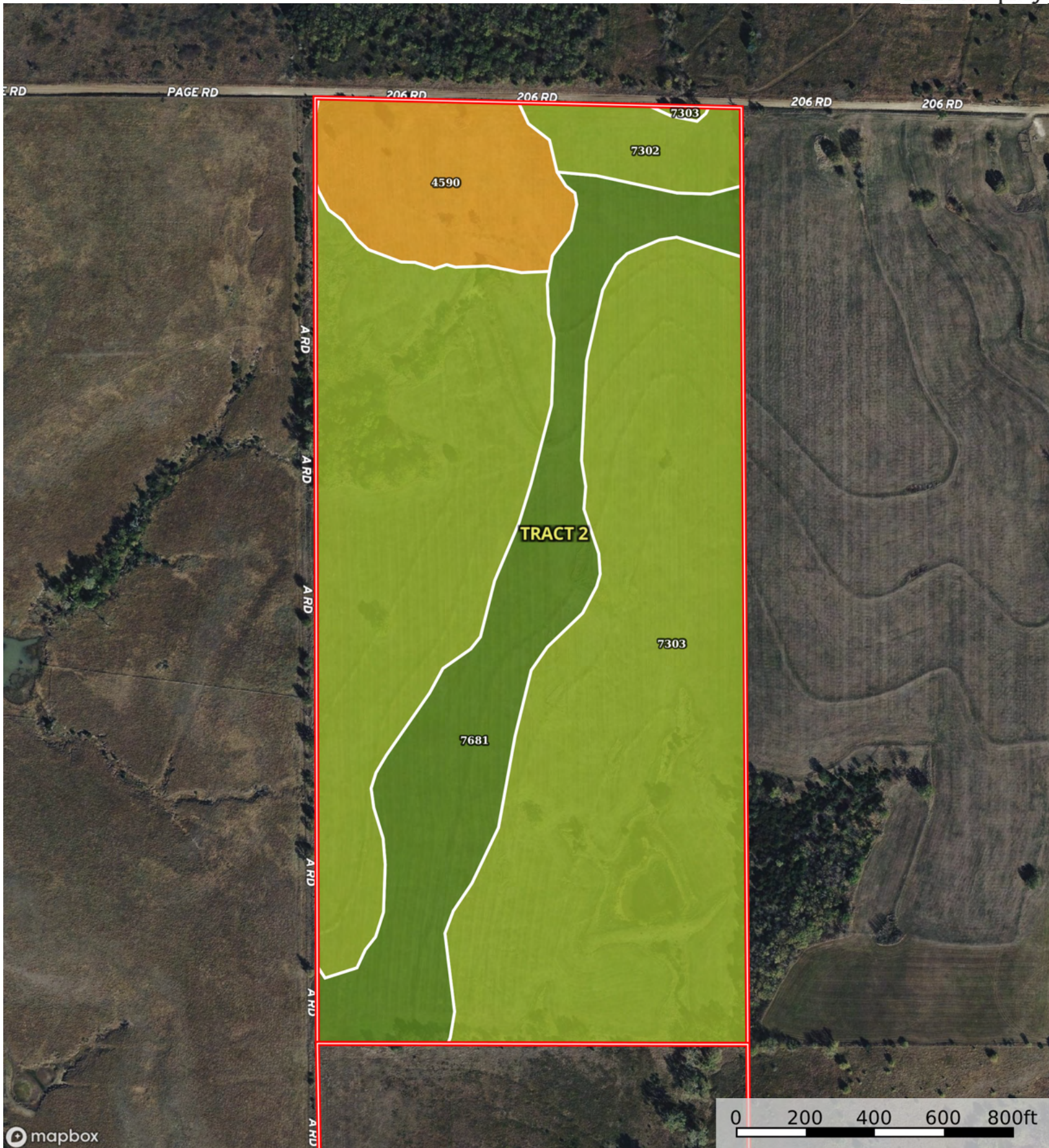
(c) climatic limitations (e) susceptibility to erosion

(s) soil limitations within the rooting zone (w) excess of water



mapbox

 Boundary



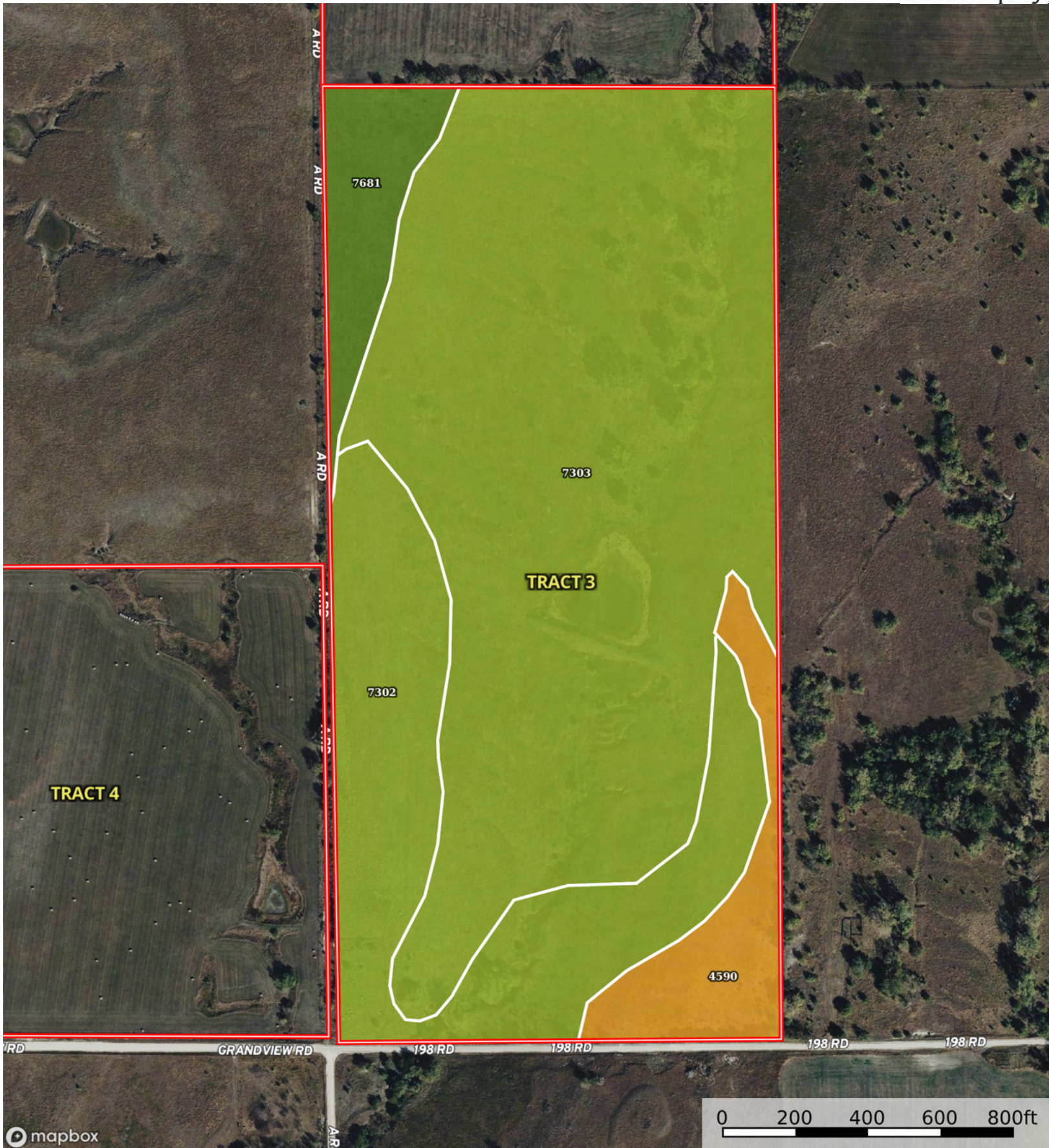
 Boundary

Boundary 77.59 ac

SOIL CODE	SOIL DESCRIPTION	ACRES	%	CPI	NCCPI	CAP
7303	Martin silty clay loam, 3 to 7 percent slopes, eroded	31.84	41.04	0	49	3e
7302	Martin silty clay loam, 3 to 7 percent slopes	23.75	30.61	0	53	3e
7681	Wymore silty clay loam, 1 to 3 percent slopes	14.83	19.11	0	64	2e
4590	Clime-Sogn complex, 3 to 20 percent slopes	7.17	9.24	0	34	6e
TOTALS		77.59(*)	100%	-	51.71	3.09

(\*) Total acres may differ in the second decimal compared to the sum of each acreage soil. This is due to a round error because we only show the acres of each soil with two decimal.





mapbox

Boundary

|  Boundary 74.49 ac

SOIL CODE	SOIL DESCRIPTION	ACRES	%	CPI	NCCPI	CAP
7303	Martin silty clay loam, 3 to 7 percent slopes, eroded	48.44	65.03	0	49	3e
7302	Martin silty clay loam, 3 to 7 percent slopes	16.73	22.46	0	53	3e
4590	Clime-Sogn complex, 3 to 20 percent slopes	5.05	6.78	0	34	6e
7681	Wymore silty clay loam, 1 to 3 percent slopes	4.27	5.73	0	64	2e
TOTALS		74.49(*)	100%	-	49.74	3.15

(\*) Total acres may differ in the second decimal compared to the sum of each acreage soil. This is due to a round error because we only show the acres of each soil with two decimal.



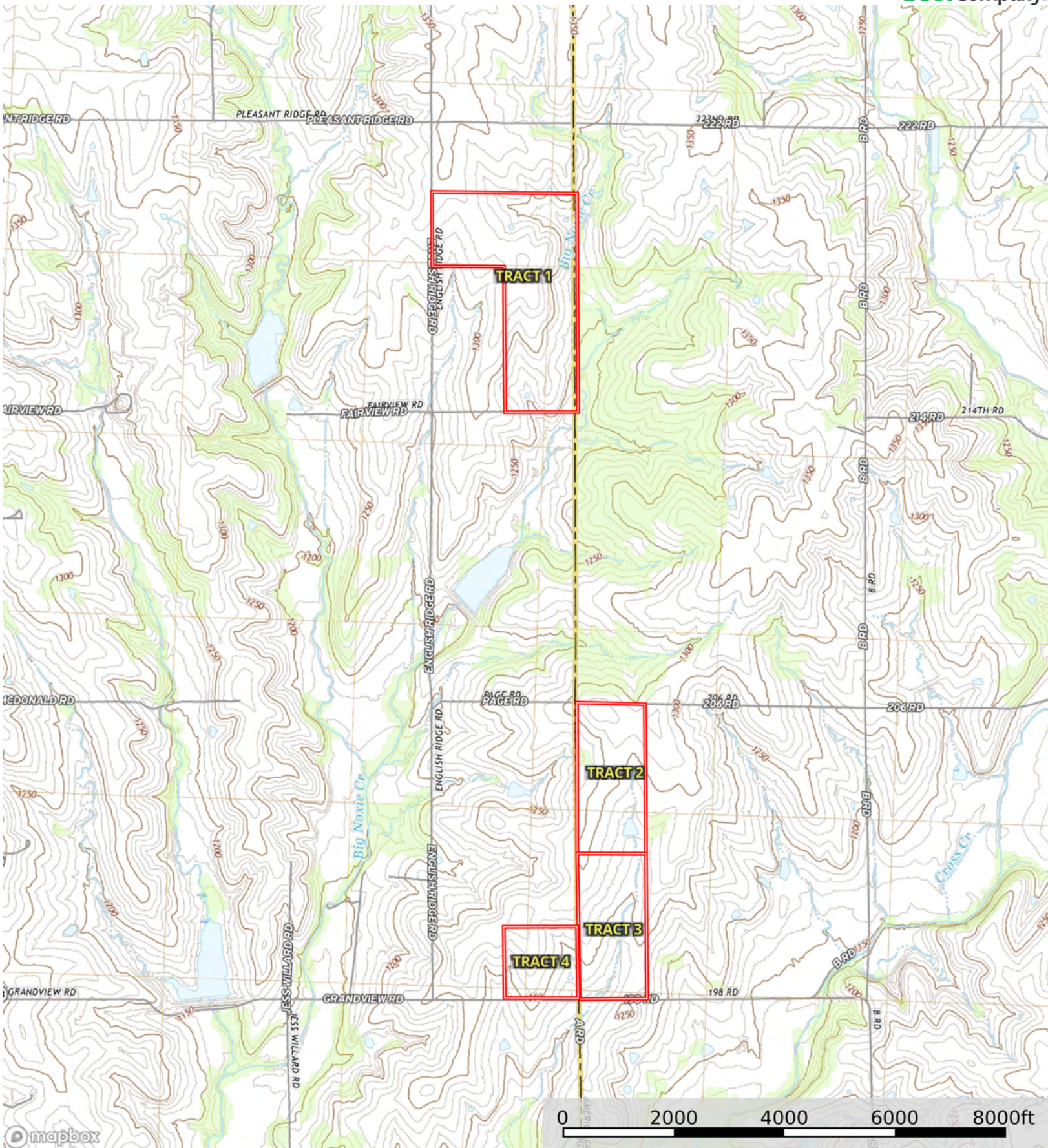



Boundary 39.58 ac

SOIL CODE	SOIL DESCRIPTION	ACRES	%	CPI	NCCPI	CAP
7302	Martin silty clay loam, 3 to 7 percent slopes	20.09	50.76	0	53	3e
4590	Clime-Sogn complex, 3 to 20 percent slopes	12.59	31.81	0	34	6e
7681	Wymore silty clay loam, 1 to 3 percent slopes	5.83	14.73	0	64	2e
4525	Benfield silty clay loam, 3 to 7 percent slopes	1.07	2.7	0	50	3e
TOTALS		39.58(*)	100%	-	48.5	3.81

(\*) Total acres may differ in the second decimal compared to the sum of each acreage soil. This is due to a round error because we only show the acres of each soil with two decimal.





 Boundary