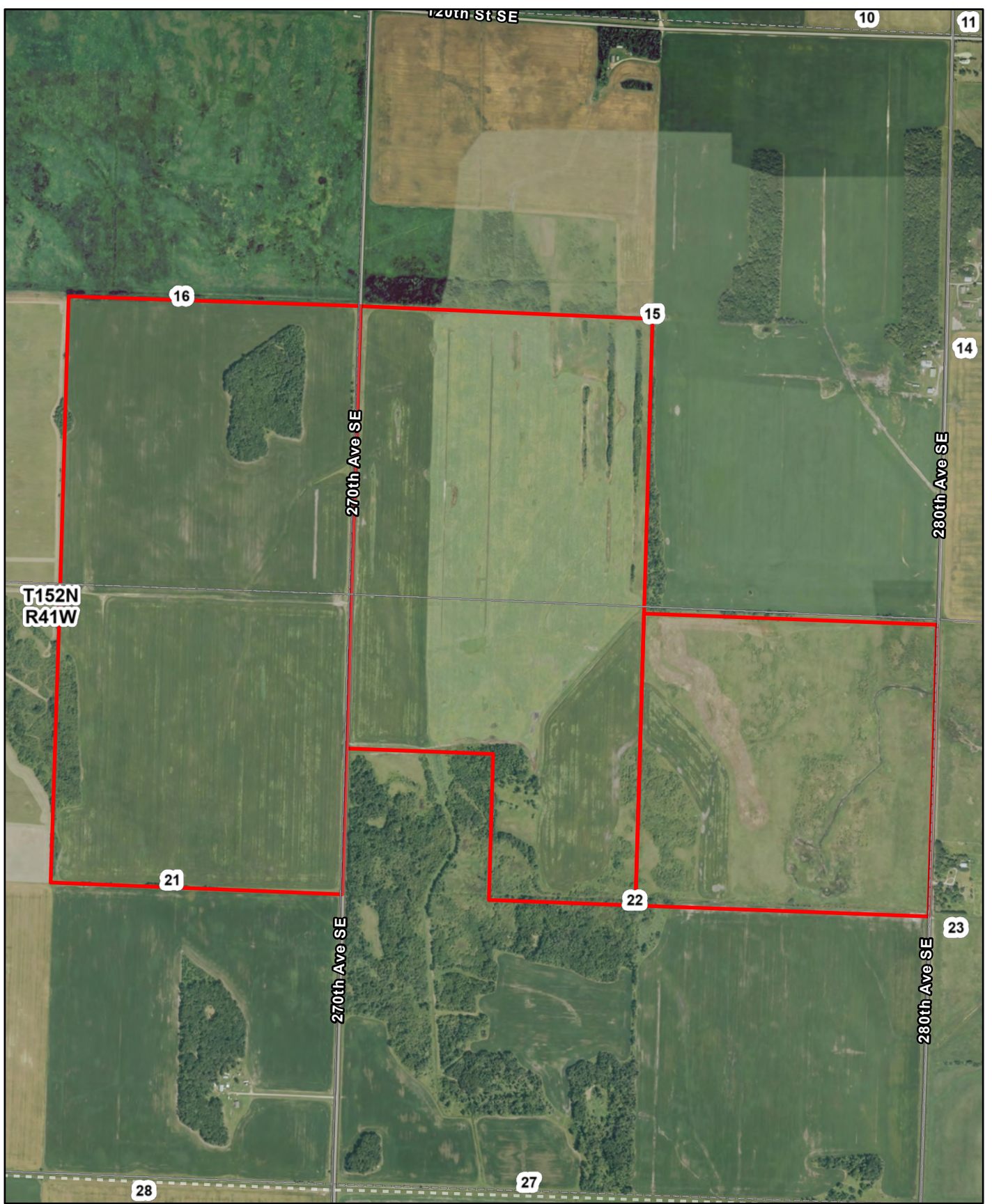




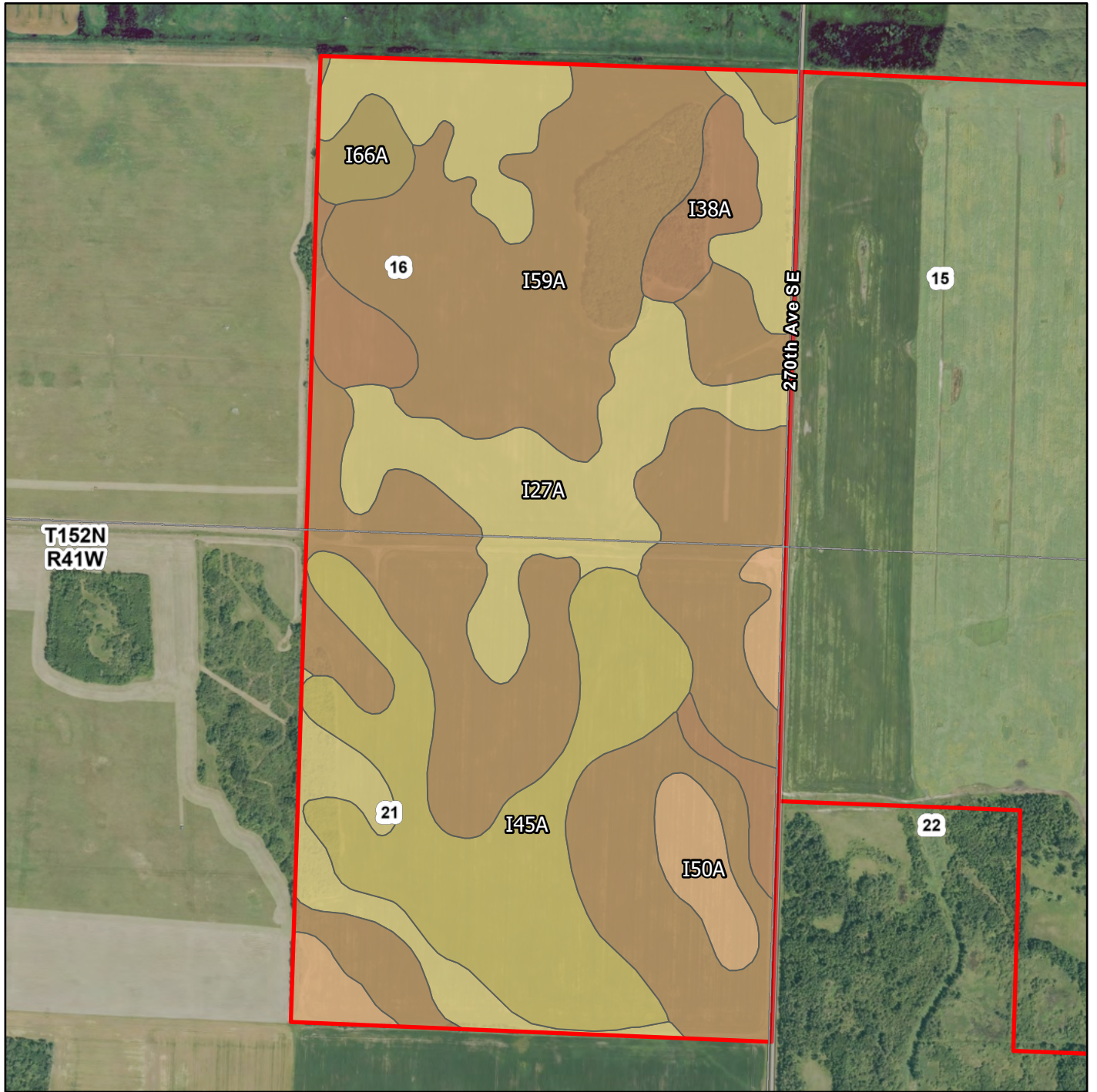
L-2600318
760 Ac
Pennington County, Minnesota

Latitude: 48.0634°N
Longitude: 96.0472°W
Imagery Source: USDA NAIP
Soil Data Source: USDA NRCS
Boundaries are Approximate



L-2600318
760 Ac
Pennington County, Minnesota

Latitude: 47.9791°N
Longitude: 95.898°W
Imagery Source: USDA NAIP
Soil Data Source: USDA NRCS
Boundaries are Approximate

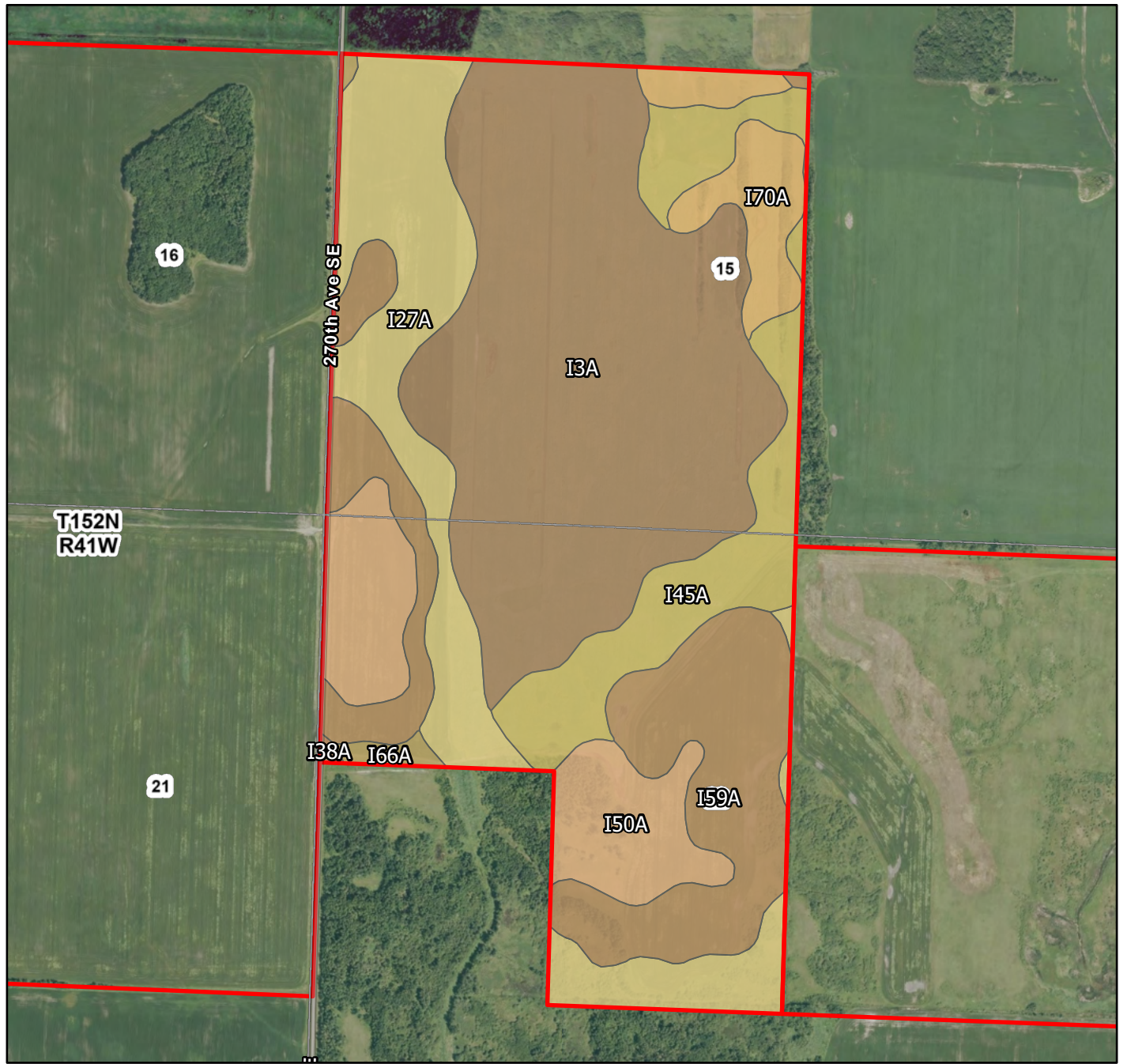


Map Symbol	Name	Non-IRR LCC	PRODUCTIVITY INDEX	ACRES
I59A	Smiley loam, 0 to 1 percent slopes	2w	95	156.6
I27A	Hamre muck, 0 to 1 percent slopes	4w	15	71
I45A	Northwood muck, 0 to 1 percent slopes	6w	15	53.4
I38A	Kratka fine sandy loam, loamy till substratum, 0 to 1 percent slopes	2w	77	18.7
I50A	Reiner fine sandy loam, 0 to 2 percent slopes	2c	89	15
I66A	Vallers loam, 0 to 2 percent slopes	2w	90	7
TOTAL			62.6	321.7



L-2600318
760 Ac
Pennington County, Minnesota

Latitude: 47.9792°N
Longitude: 95.9087°W
Imagery Source: USDA NAIP
Soil Data Source: USDA NRCS
Boundaries are Approximate

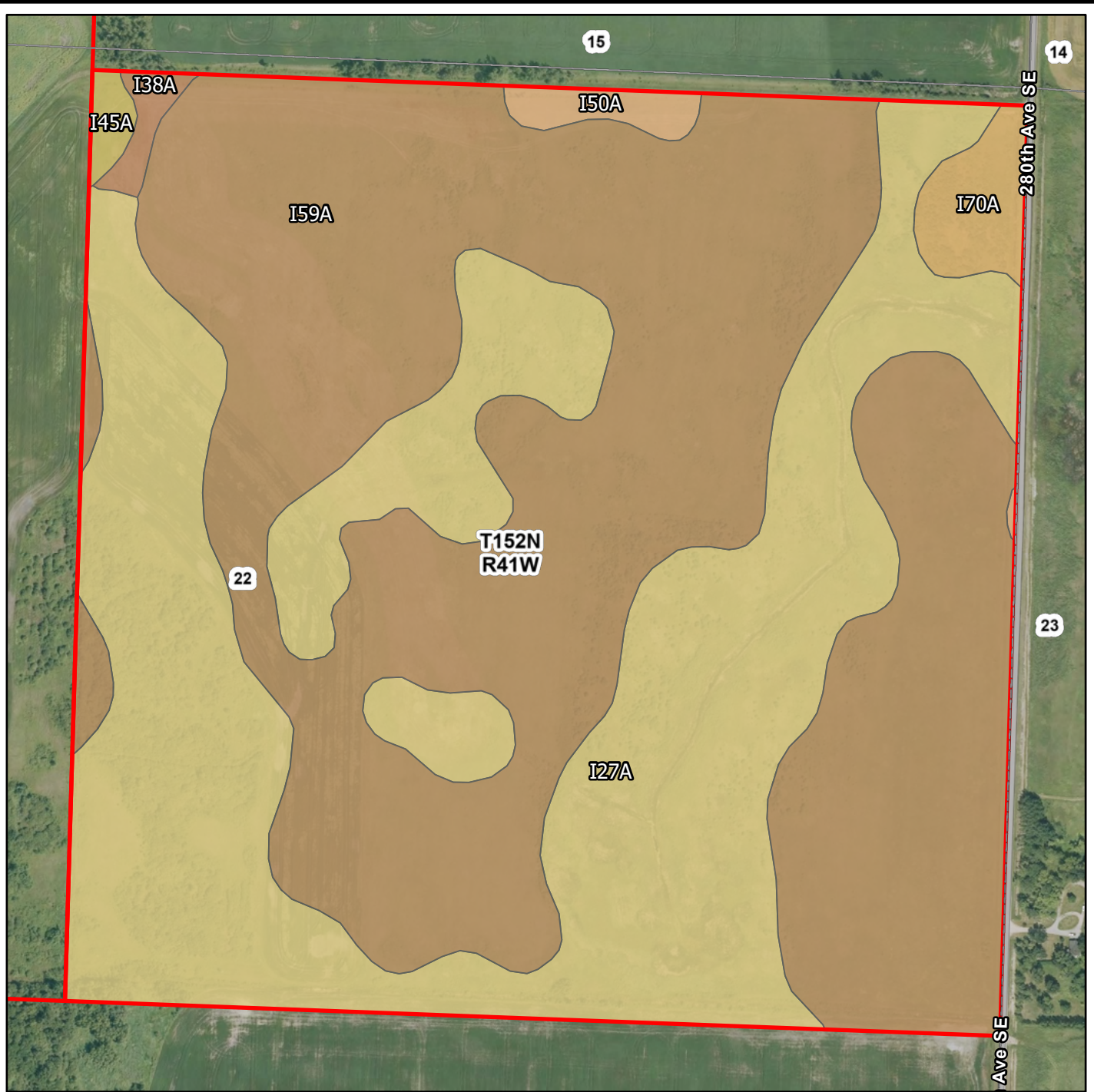


Map Symbol	Name	Non-IRR LCC	PRODUCTIVITY INDEX	ACRES
I3A	Berner muck, 0 to 1 percent slopes	6w	5	111.5
I27A	Hamre muck, 0 to 1 percent slopes	4w	15	48.8
I59A	Smiley loam, 0 to 1 percent slopes	2w	95	48
I45A	Northwood muck, 0 to 1 percent slopes	6w	15	31.8
I50A	Reiner fine sandy loam, 0 to 2 percent slopes	2c	89	27.2
I70A	Strathcona fine sandy loam, 0 to 1 percent slopes	2w	80	13.6
I66A	Vallers loam, 0 to 2 percent slopes	2w	90	2
I38A	Kratka fine sandy loam, loamy till substratum, 0 to 1 percent slopes	2w	77	0.3
TOTAL			35.4	283.2



L-2600318
760 Ac
Pennington County, Minnesota

Latitude: 47.9792°N
Longitude: 95.8979°W
Imagery Source: USDA NAIP
Soil Data Source: USDA NRCS
Boundaries are Approximate

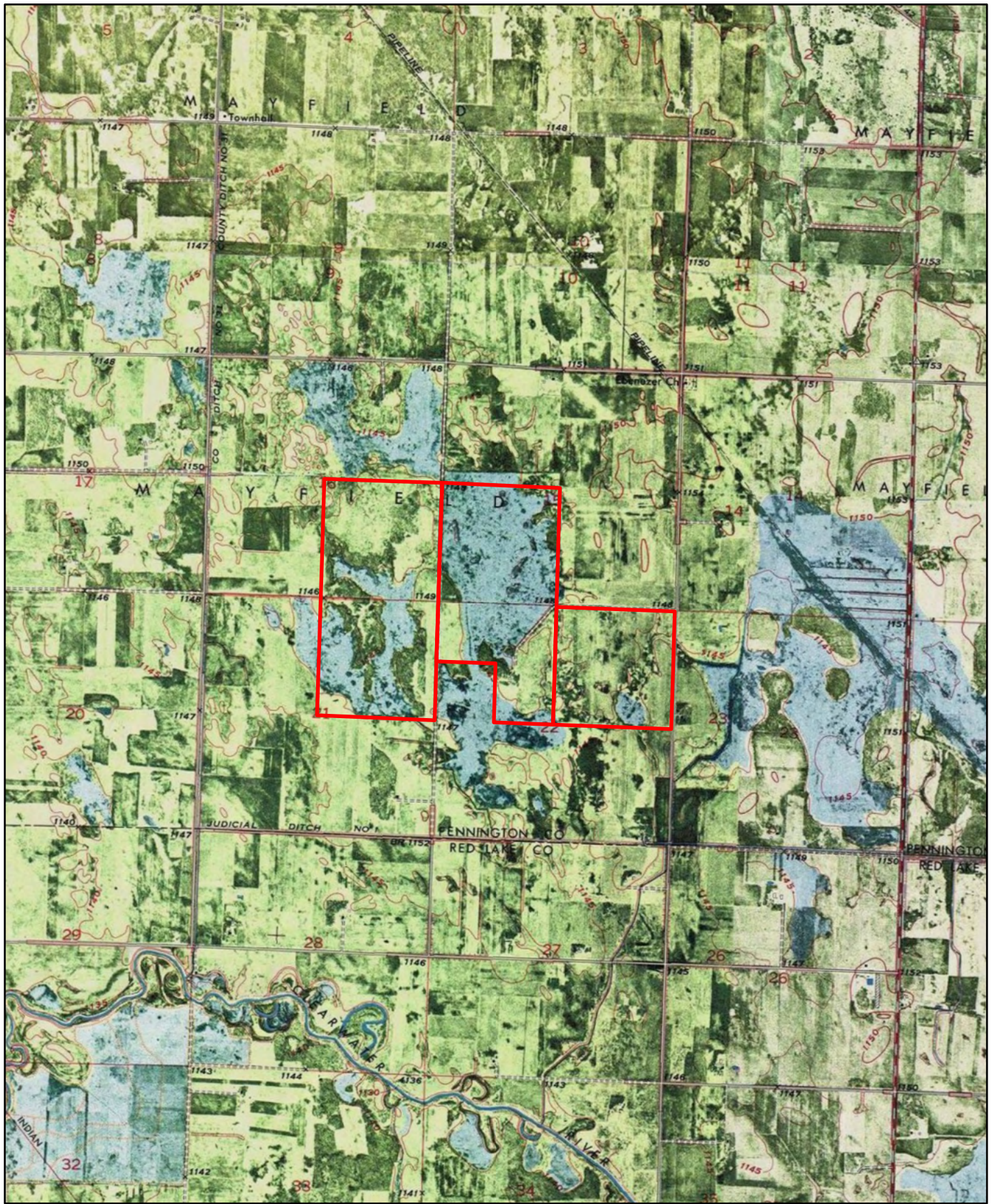


Map Symbol	Name	Non-IRR LCC	PRODUCTIVITY INDEX	ACRES
I59A	Smiley loam, 0 to 1 percent slopes	2w	95	89.7
I27A	Hamre muck, 0 to 1 percent slopes	4w	15	65.4
I70A	Strathcona fine sandy loam, 0 to 1 percent slopes	2w	80	2.7
I50A	Reiner fine sandy loam, 0 to 2 percent slopes	2c	89	1.4
I38A	Kratka fine sandy loam, loamy till substratum, 0 to 1 percent slopes	2w	77	0.9
I45A	Northwood muck, 0 to 1 percent slopes	6w	15	0.7
TOTAL			61.7	160.8



L-2600318
760 Ac
Pennington County, Minnesota

Latitude: 47.9755°N
Longitude: 95.887°W
Imagery Source: USDA NAIP
Soil Data Source: USDA NRCS
Boundaries are Approximate



L-2600318
760 Ac
Pennington County, Minnesota

Latitude: 47.9791°N
Longitude: 95.898°W
Imagery Source: USDA NAIP
Soil Data Source: USDA NRCS
Boundaries are Approximate