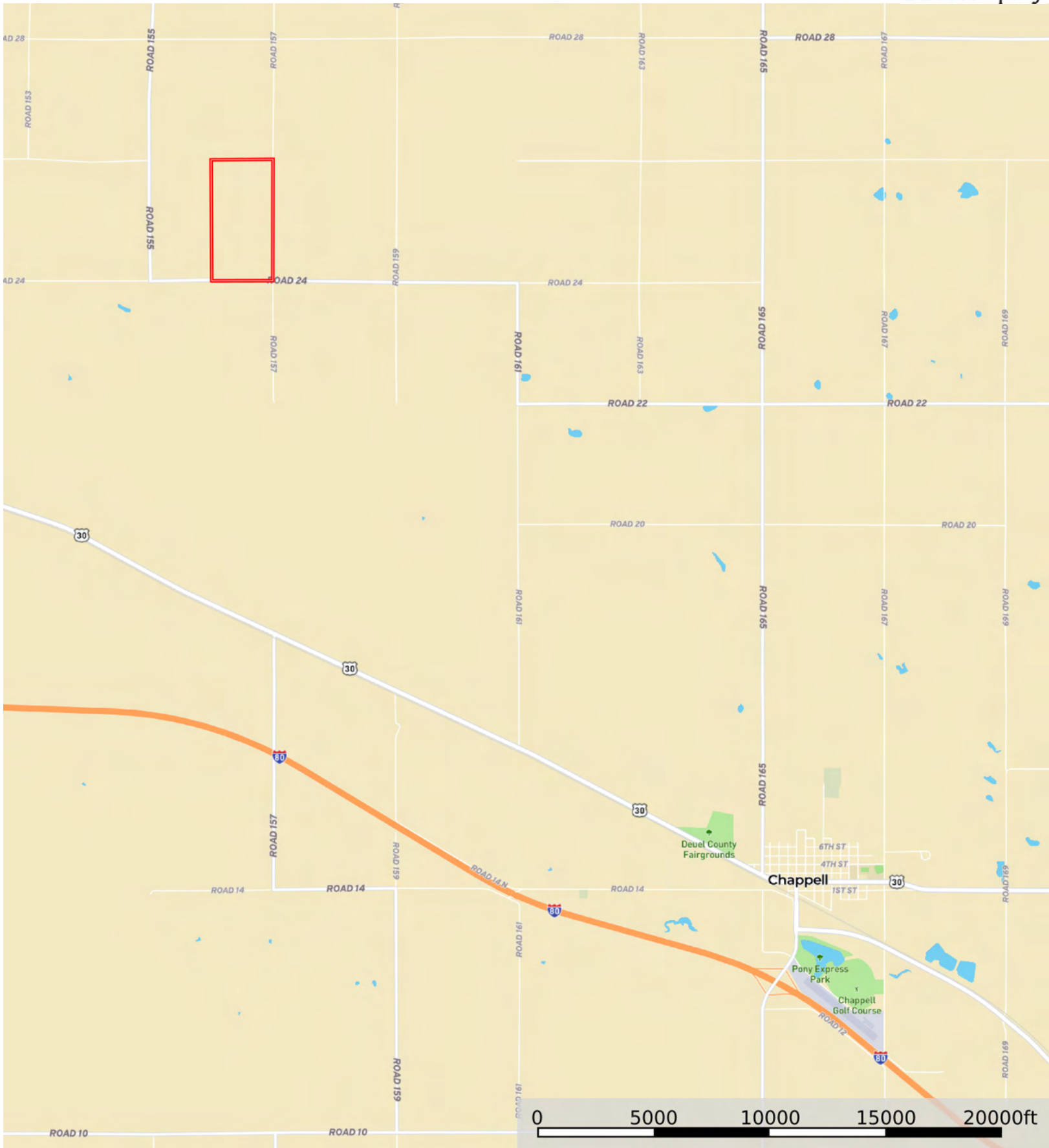


L-2600326

Deuel County, Nebraska, 320.79 AC +/-



 Boundary

L-2600326

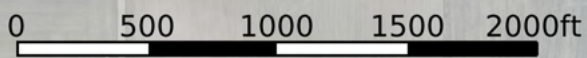
Deuel County, Nebraska, 320.79 AC +/-



 Boundary

L-2600326

Deuel County, Nebraska, 320.79 AC +/-



 Boundary

Boundary 320.36 ac

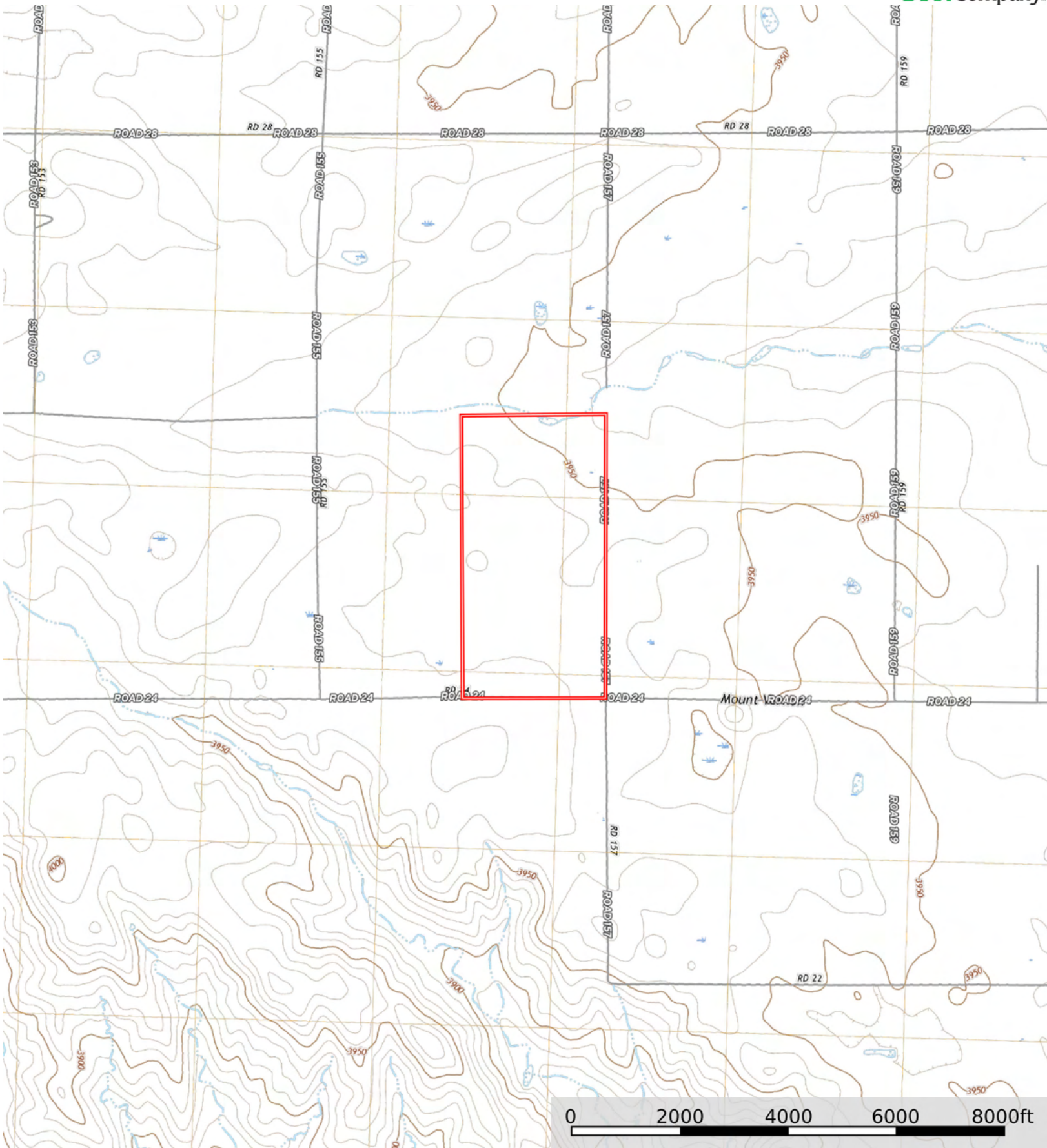
SOIL CODE	SOIL DESCRIPTION	ACRES	%	CPI	NCCPI	CAP
1825	Satanta-Johnstown-Altvan loams, 1 to 3 percent slopes	138.31	43.17	0	47	2e
1820	Satanta-Altvan complex, 3 to 6 percent slopes	104.28	32.55	0	41	3e
5108	Alliance-Rosebud loams, 1 to 3 percent slopes	64.02	19.98	0	42	2e
1838	Sidney loam, 3 to 6 percent slopes	13.06	4.08	0	42	3e
5942	Duroc loam, 0 to 1 percent slopes	0.69	0.22	0	62	2c
TOTALS		320.36(*)	100%	-	43.88	2.37

(*) Total acres may differ in the second decimal compared to the sum of each acreage soil. This is due to a round error because we only show the acres of each soil with two decimal.



L-2600326

Deuel County, Nebraska, 320.79 AC +/-



 Boundary