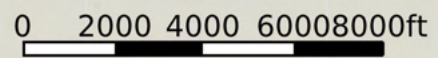
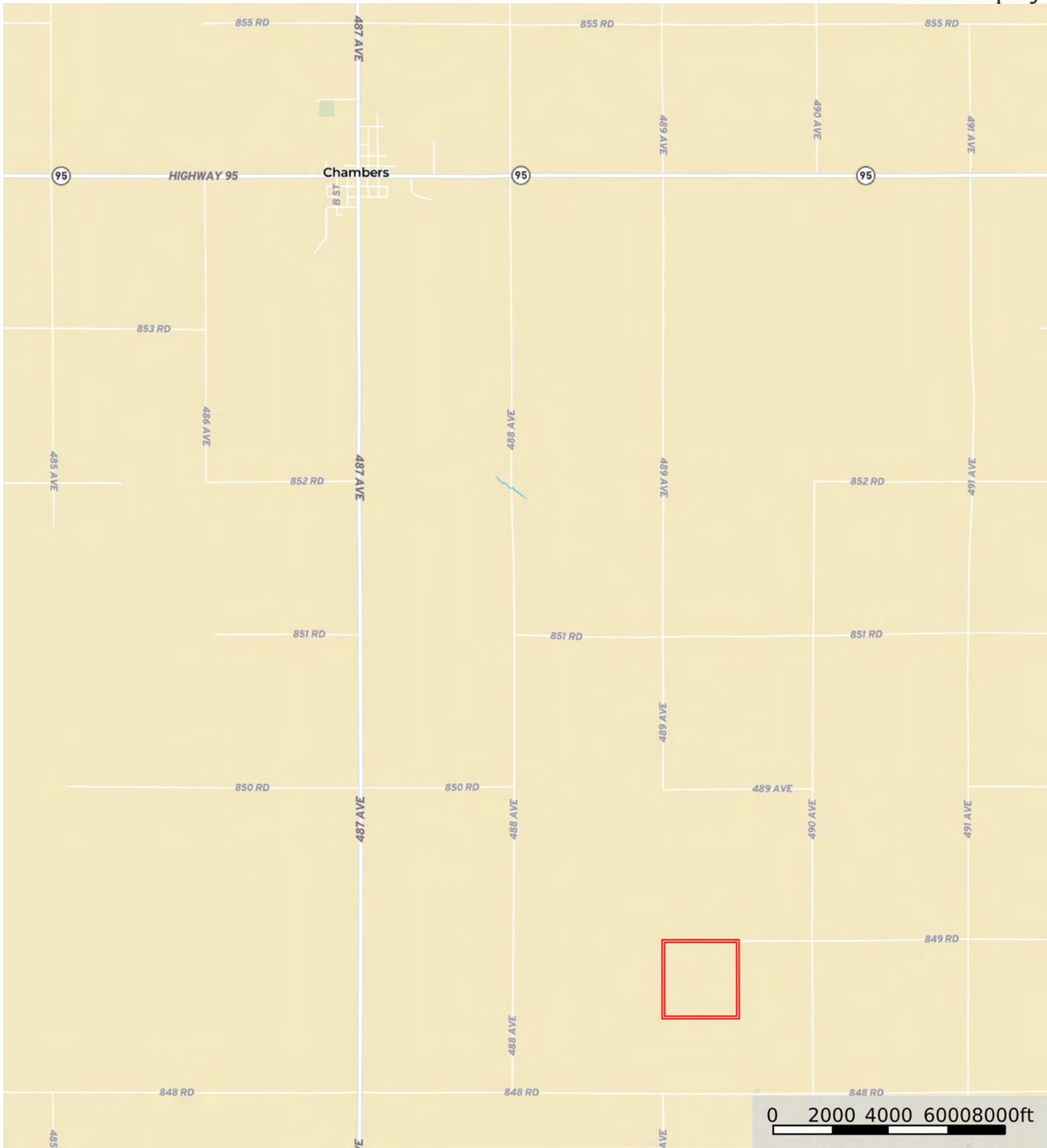
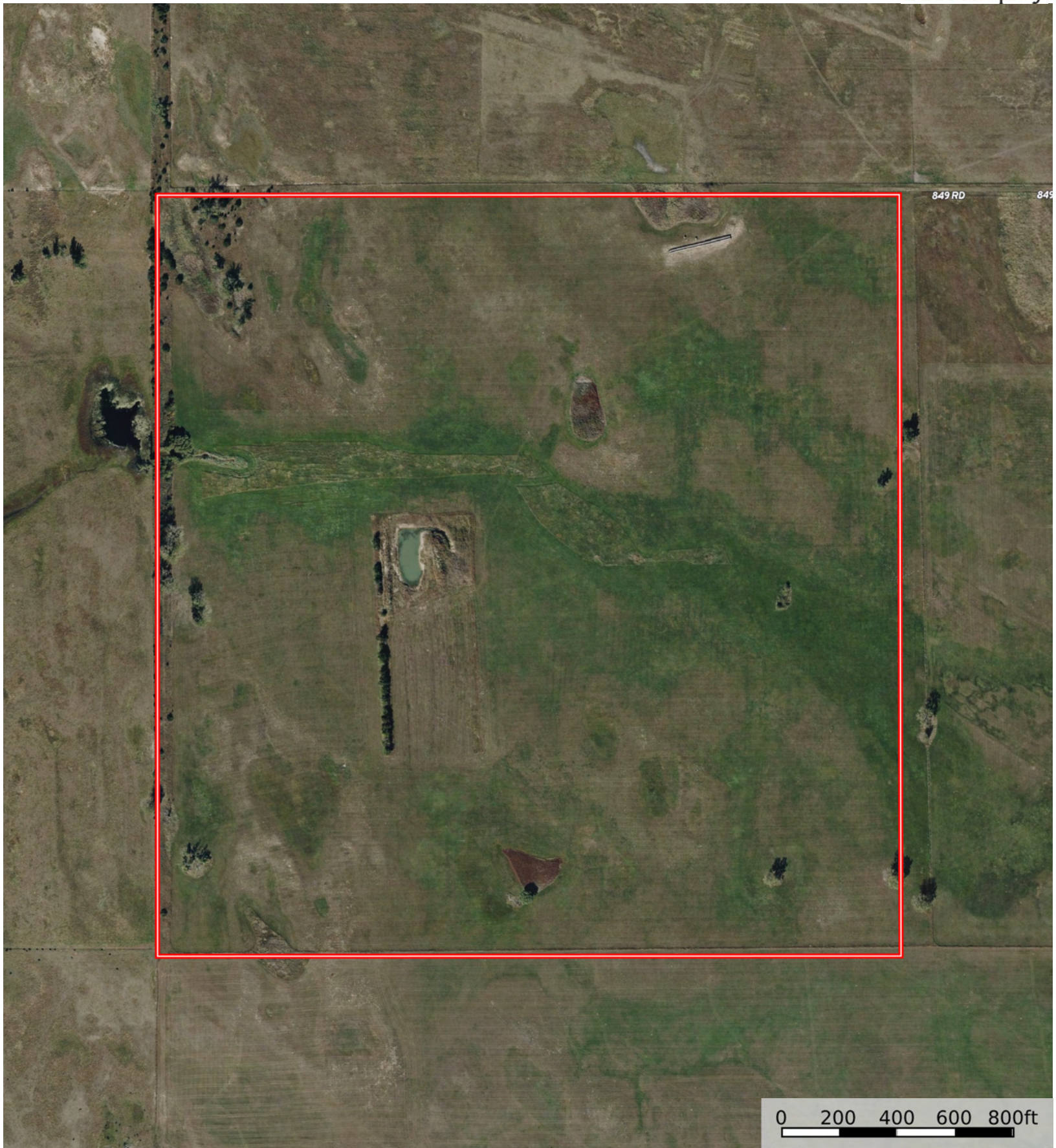



L-2600330

Holt County, Nebraska, 160 AC +/-



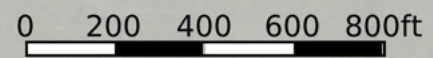
Boundary



 Boundary



849 RD 849



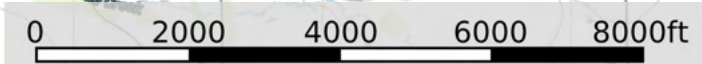
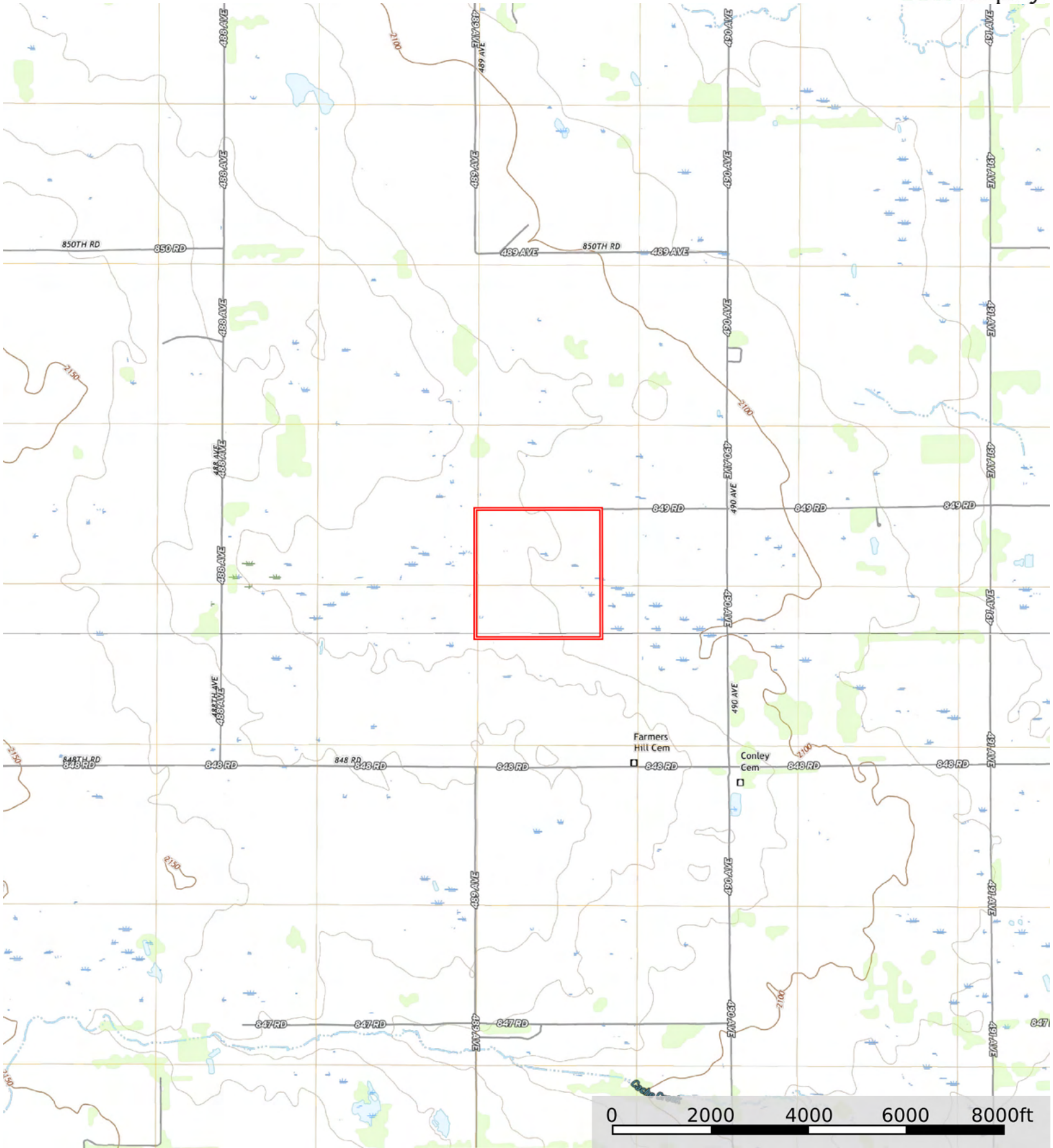
 Boundary

Boundary 156.24 ac

SOIL CODE	SOIL DESCRIPTION	ACRES	%	CPI	NCCPI	CAP
4542	Els-lpage complex, 0 to 3 percent slopes	52.67	33.71	0	26	6w
4533	Els loamy sand, 0 to 3 percent slopes	38.88	24.88	0	30	4w
4560	Elsmere-lpage loamy fine sands, 0 to 3 percent slopes	23.3	14.91	0	33	4w
4662	Loup fine sandy loam, 0 to 1 percent slopes	12.99	8.31	30	26	5w
4858	Valentine-Els complex, moist, 0 to 9 percent slopes	11.22	7.18	0	29	6e
4562	Elsmere-Selia loamy fine sands, 0 to 3 percent slopes	9.33	5.97	0	31	4w
4352	Elsmere fine sandy loam, 0 to 3 percent slopes	6.97	4.46	0	34	3w
4691	Marlake mucky peat	0.88	0.56	6	2	8w
TOTALS		156.24(*)	100%	2.53	28.78	4.88

(\*) Total acres may differ in the second decimal compared to the sum of each acreage soil. This is due to a round error because we only show the acres of each soil with two decimal.





 Boundary