

L-2600354
3 Ac
Roberts County, South Dakota

Latitude: 45.6634°N
 Longitude: 97.0475°W
 Imagery Source: USDA NAIP
 Soil Data Source: USDA NRCS
 Boundaries are Approximate

SD Highway 10

10

27

10

SD Highway



T126N
R51W

34



L-2600354
3 Ac
Roberts County, South Dakota

Latitude: 45.6595°N
Longitude: 97.0355°W
Imagery Source: USDA NAIP
Soil Data Source: USDA NRCS
Boundaries are Approximate

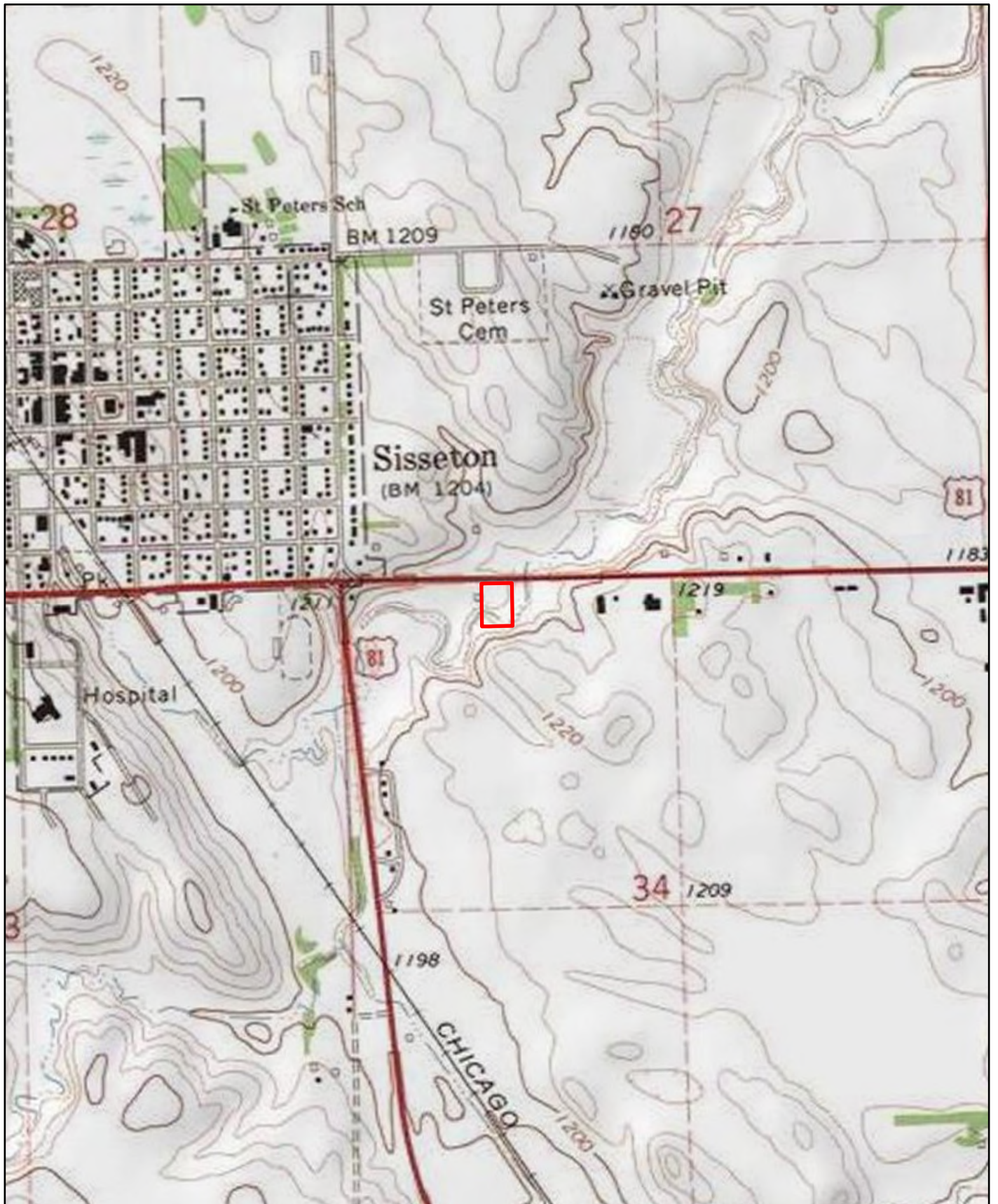


Map Symbol	Name	Non-IRR LCC	PI	ACRES
Lt	Lamoure silty clay loam, 0 to 2 percent slopes, frequently flooded	6w	24	1
La	LaDelle silt loam	1	88	0.8
SsF	Sisseton-Esmond complex, 12 to 40 percent slopes	7e	24	0.2
TOTAL			49.6	2



L-2600354
3 Ac
Roberts County, South Dakota

Latitude: 45.6595°N
 Longitude: 97.0355°W
 Imagery Source: USDA NAIP
 Soil Data Source: USDA NRCS
 Boundaries are Approximate



L-2600354
3 Ac
Roberts County, South Dakota

Latitude: 45.6595°N
Longitude: 97.0355°W
Imagery Source: USDA NAIP
Soil Data Source: USDA NRCS
Boundaries are Approximate