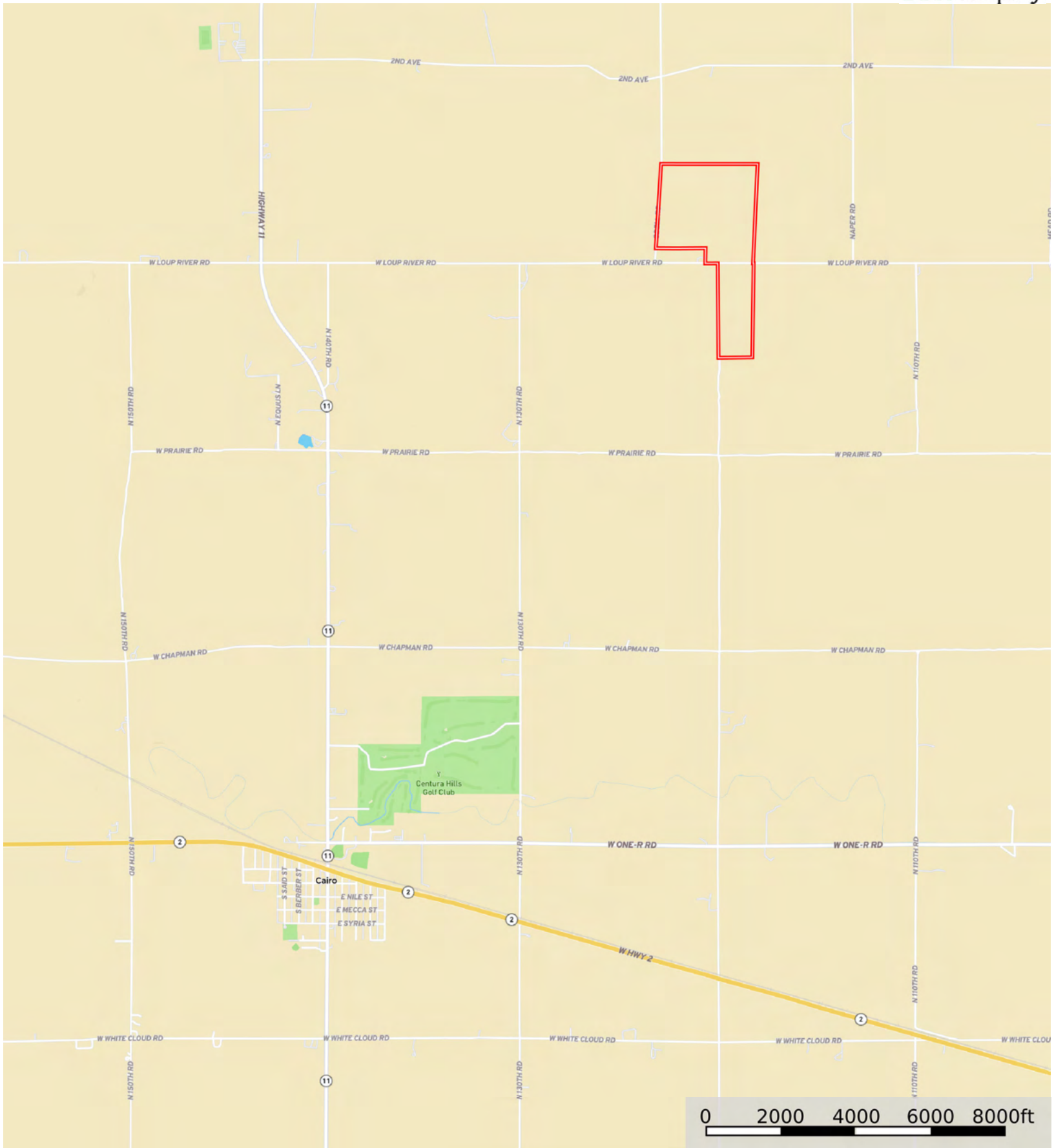


L-2600261

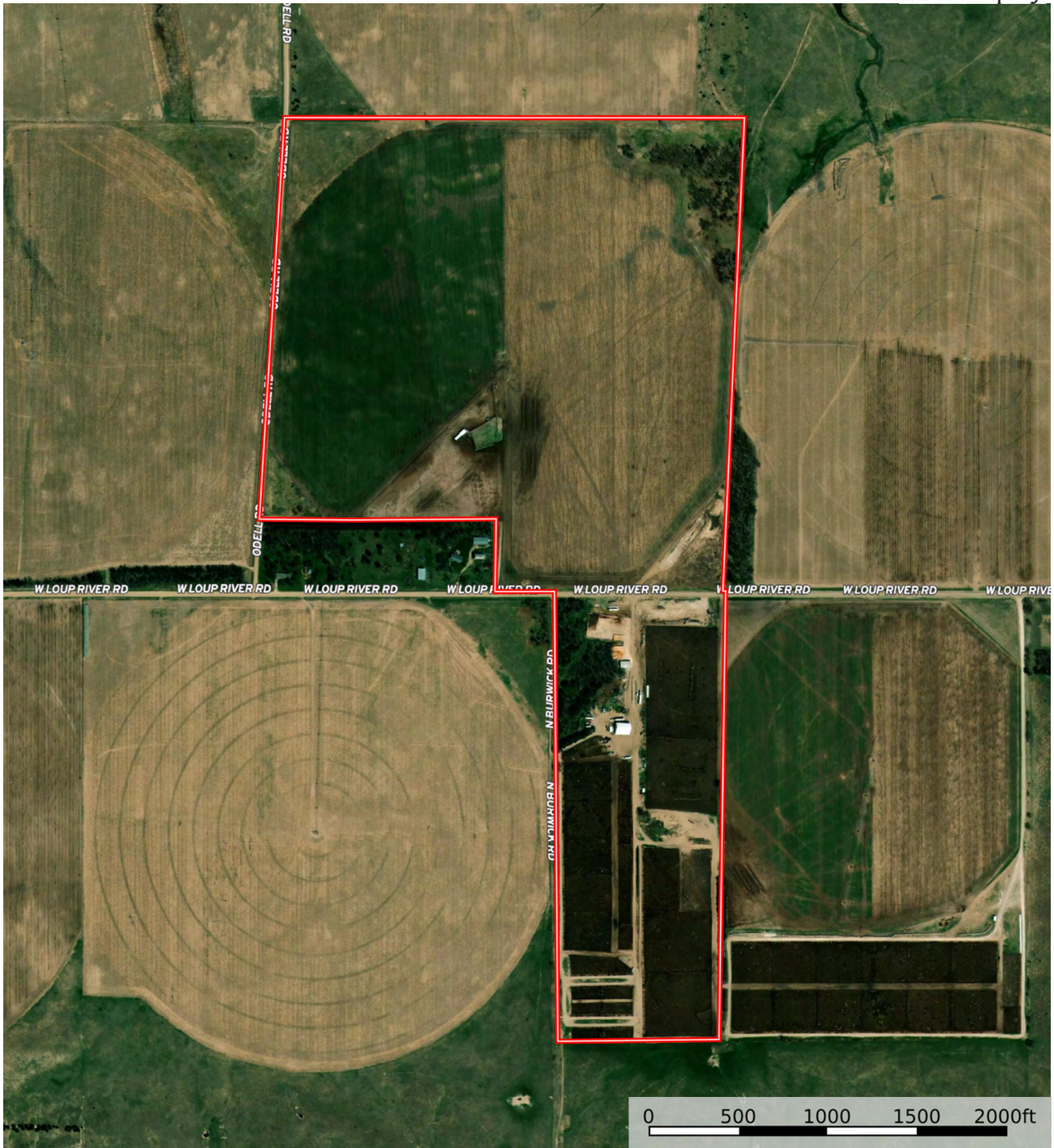
Hall County, Howard County, Nebraska, 200 AC +/-



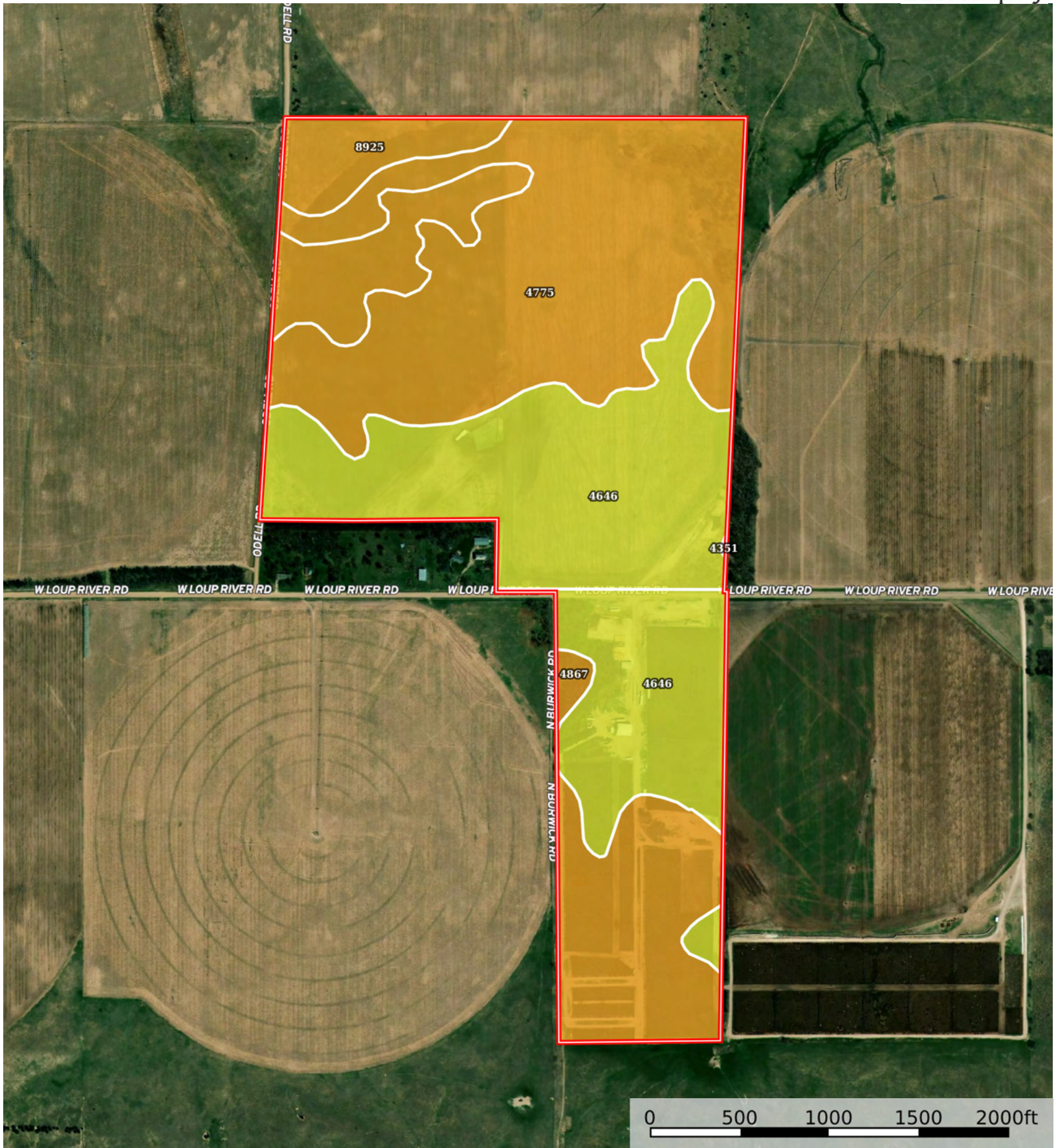
 Boundary

L-2600261

Hall County, Howard County, Nebraska, 200 AC +/-



 Boundary



 Boundary

Boundary 201.04 ac

SOIL CODE	SOIL DESCRIPTION	ACRES	%	CPI	NCCPI	CAP
4646	lpage loamy fine sand, 0 to 3 percent slopes	79.11	39.35	0	30	4e
4775	Valentine and Thurman soils, 0 to 17 percent slopes	72.13	35.88	0	28	6e
4867	Valentine-Libory complex, 0 to 9 percent slopes	27.41	13.63	0	35	6e
8925	Simeon loamy sand, 0 to 3 percent slopes	22.33	11.11	0	31	6s
4351	Elsmere loamy fine sand, 0 to 2 percent slopes, rarely flooded	0.06	0.03	0	47	4w
TOTALS		201.04(*)	100%	-	30.08	5.21

(*) Total acres may differ in the second decimal compared to the sum of each acreage soil. This is due to a round error because we only show the acres of each soil with two decimal.

Capability Legend

Increased Limitations and Hazards

Decreased Adaptability and Freedom of Choice Users

Land, Capability

	1	2	3	4	5	6	7	8
'Wild Life'	•	•	•	•	•	•	•	•
Forestry	•	•	•	•	•	•	•	
Limited	•	•	•	•	•	•	•	
Moderate	•	•	•	•	•	•		
Intense	•	•	•	•	•			
Limited	•	•	•	•				
Moderate	•	•	•					
Intense	•	•						
Very Intense	•							

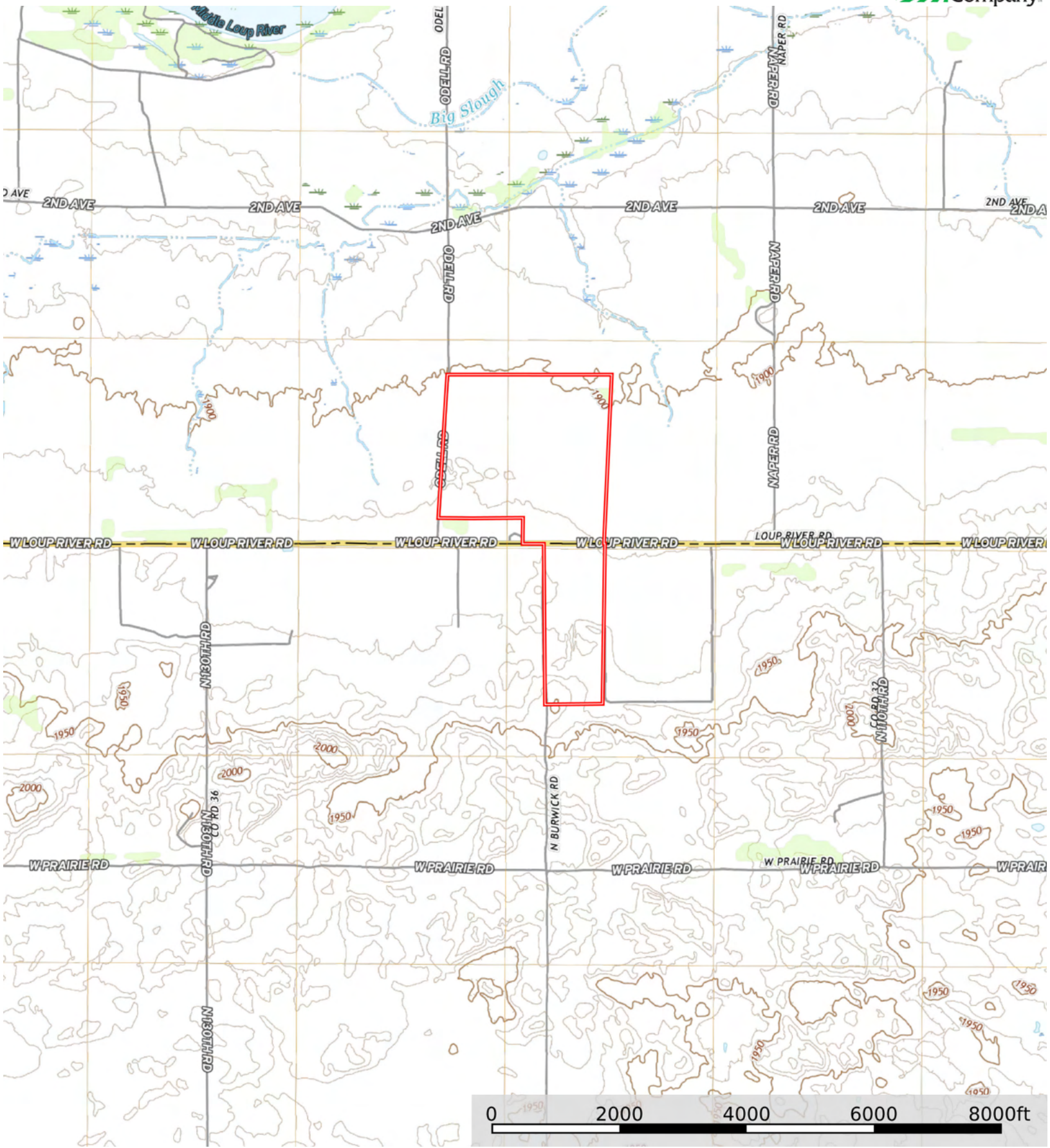
Grazing Cultivation

(c) climatic limitations (e) susceptibility to erosion

(s) soil limitations within the rooting zone (w) excess of water

L-2600261

Hall County, Howard County, Nebraska, 200 AC +/-



Boundary