

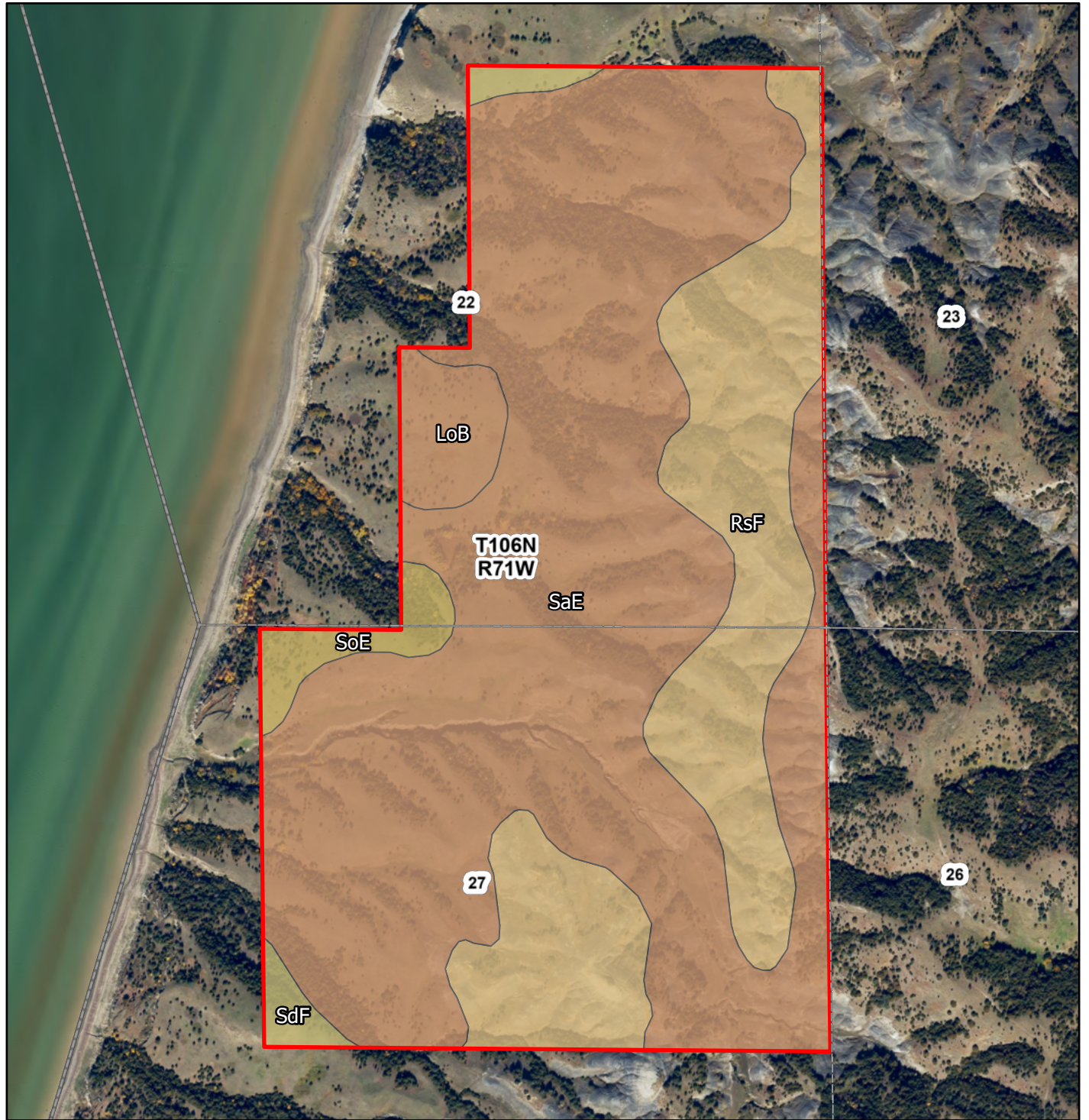
L-2600373
230 Ac
Buffalo County, South Dakota

Latitude: 43.8869°N
Longitude: 99.338°W
Imagery Source: USDA NAIP
Soil Data Source: USDA NRCS
Boundaries are Approximate



L-2600373
230 Ac
Buffalo County, South Dakota

Latitude: 43.9628°N
Longitude: 99.3318°W
Imagery Source: USDA NAIP
Soil Data Source: USDA NRCS
Boundaries are Approximate

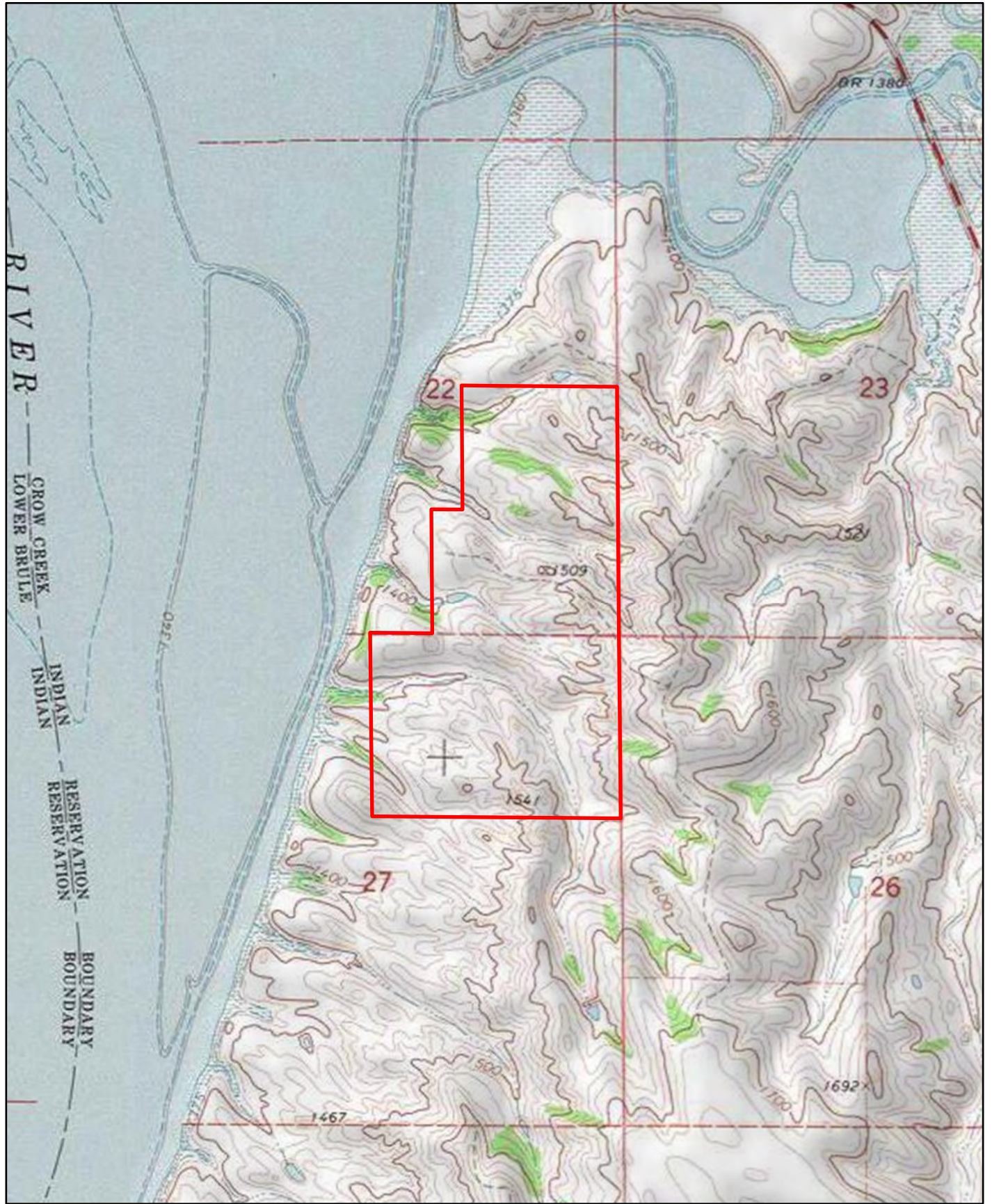


Map Symbol	Name	Non-IRR LCC	PRODUCTIVITY INDEX	ACRES
SaE	Sansarc-Opal clays, 9 to 25 percent slopes	7e	21	154
RsF	Rock outcrop-Sansarc complex, 6 to 40 percent slopes	8e	5	56.7
LoB	Lowry silt loam, 3 to 6 percent slopes	2e	91	7.1
SoE	Sully-Lowry silt loams, 9 to 25 percent slopes	6e	22	5.4
SdF	Sully silt loam, 25 to 40 percent slopes	7e	5	4
TOTAL			18.9	227.2



L-2600373
230 Ac
Buffalo County, South Dakota

Latitude: 43.9628°N
 Longitude: 99.3318°W
 Imagery Source: USDA NAIP
 Soil Data Source: USDA NRCS
 Boundaries are Approximate



L-2600373
230 Ac
Buffalo County, South Dakota

Latitude: 43.9628°N
Longitude: 99.3318°W
Imagery Source: USDA NAIP
Soil Data Source: USDA NRCS
Boundaries are Approximate