

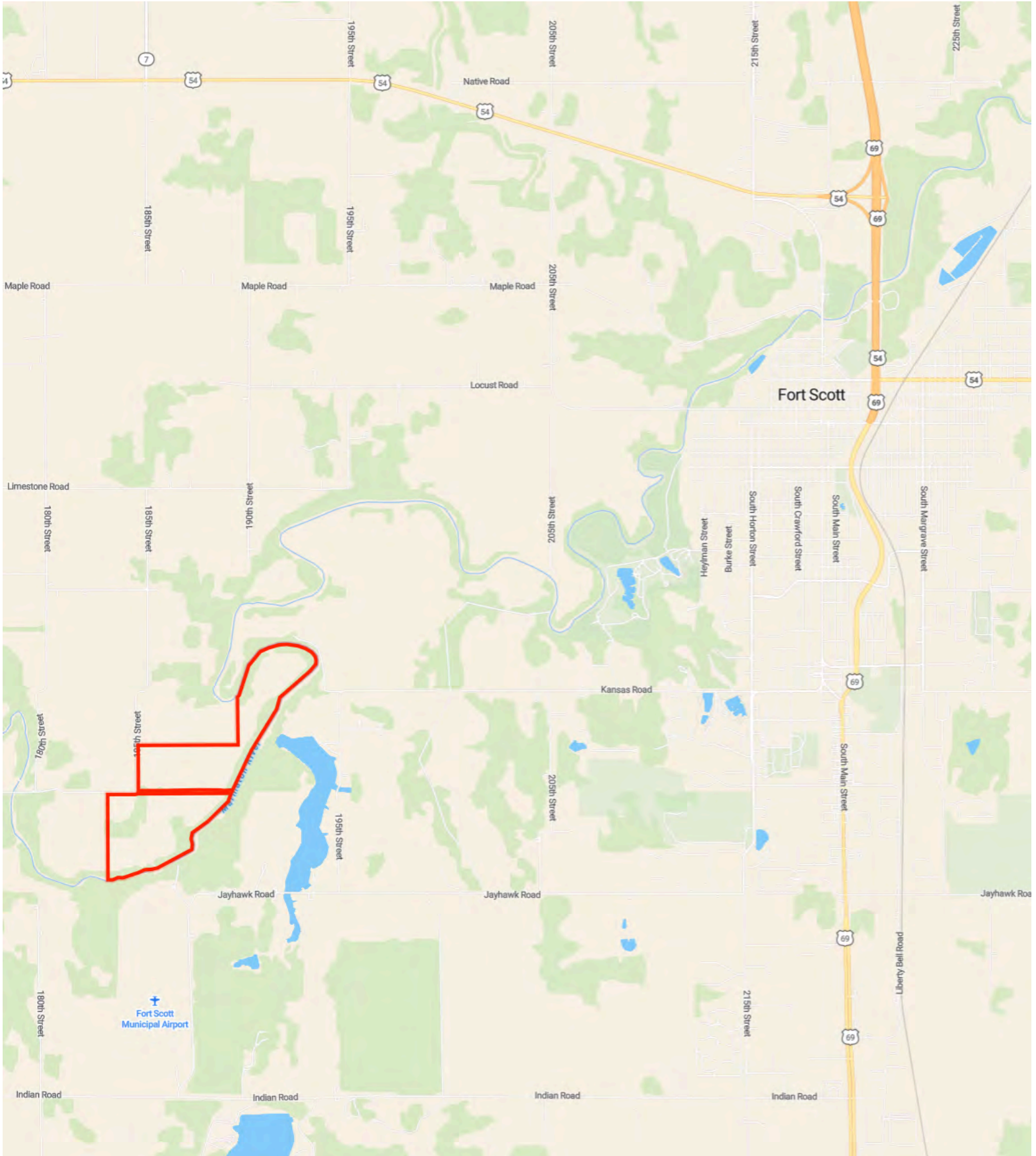


L-26000390

278.8 Acres



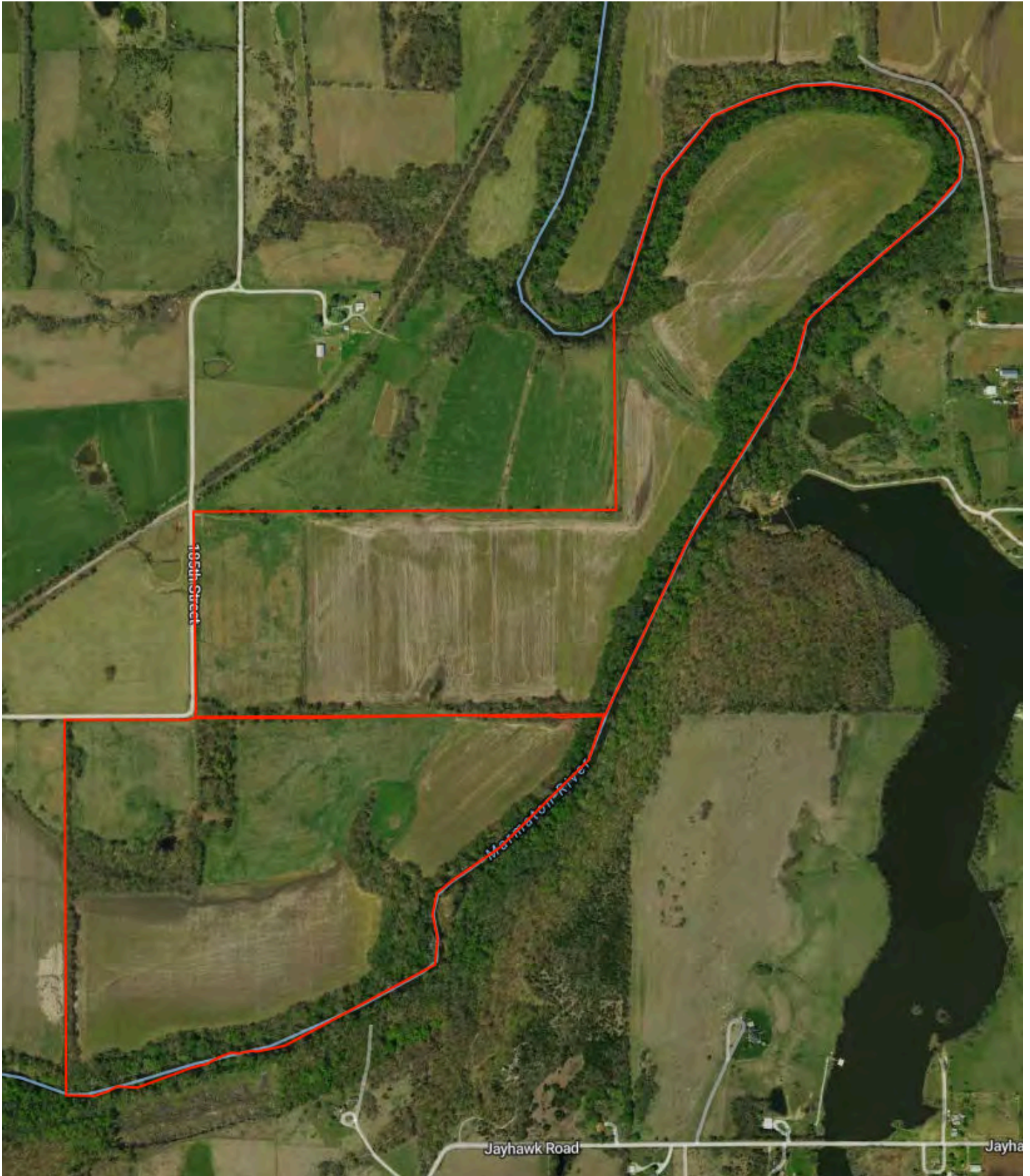
Farmers National Company



Property Overview



278.8 Acres, 2 Boundaries



Property Overview



Bourbon County, KS

156.8 Acres, Boundary 1 of 2



Bourbon County, KS
Township: 026S

Locations
03 T26S R24E

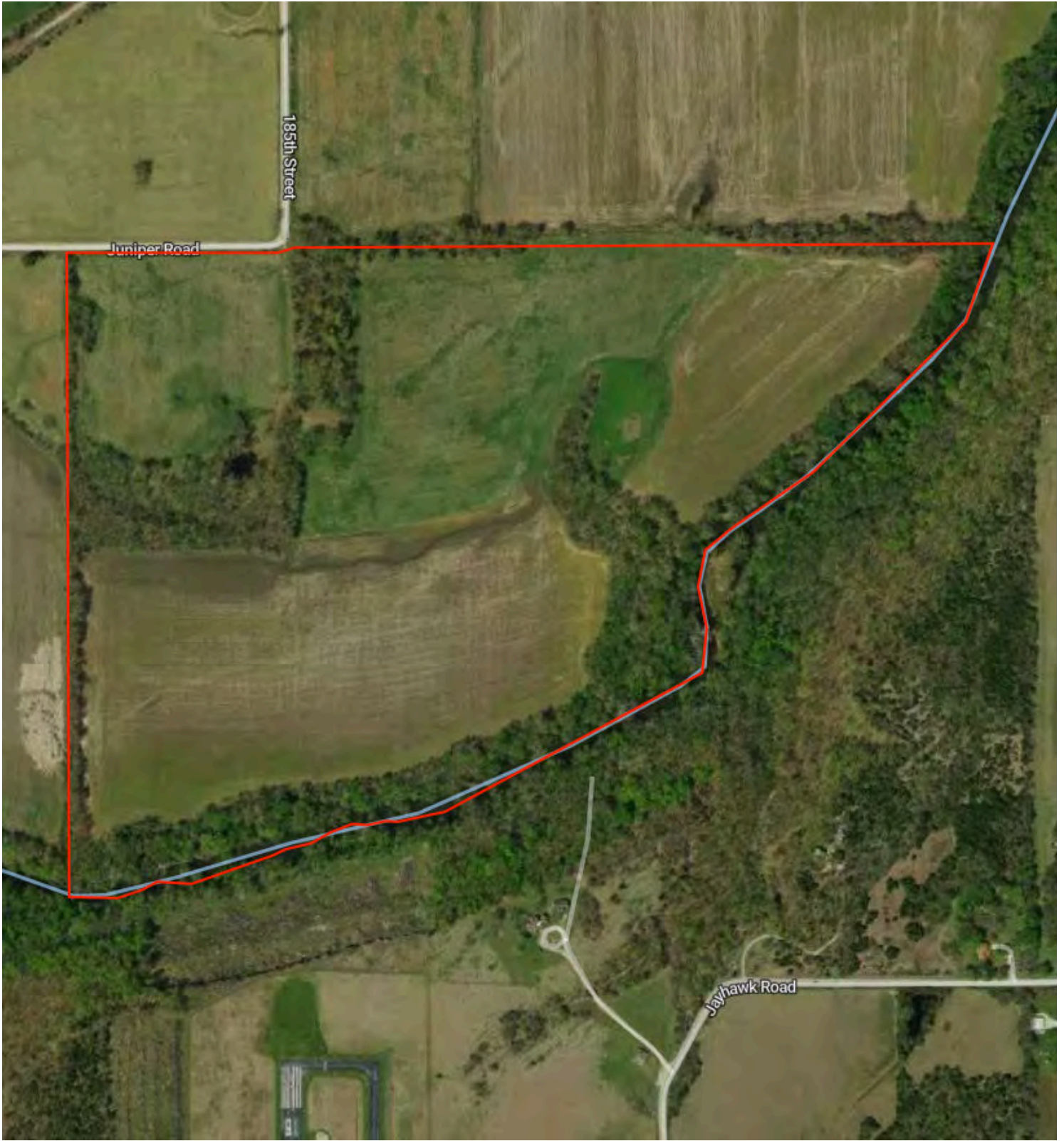
Acres
156.76

Property Overview



Bourbon County, KS

122.0 Acres, Boundary 2 of 2



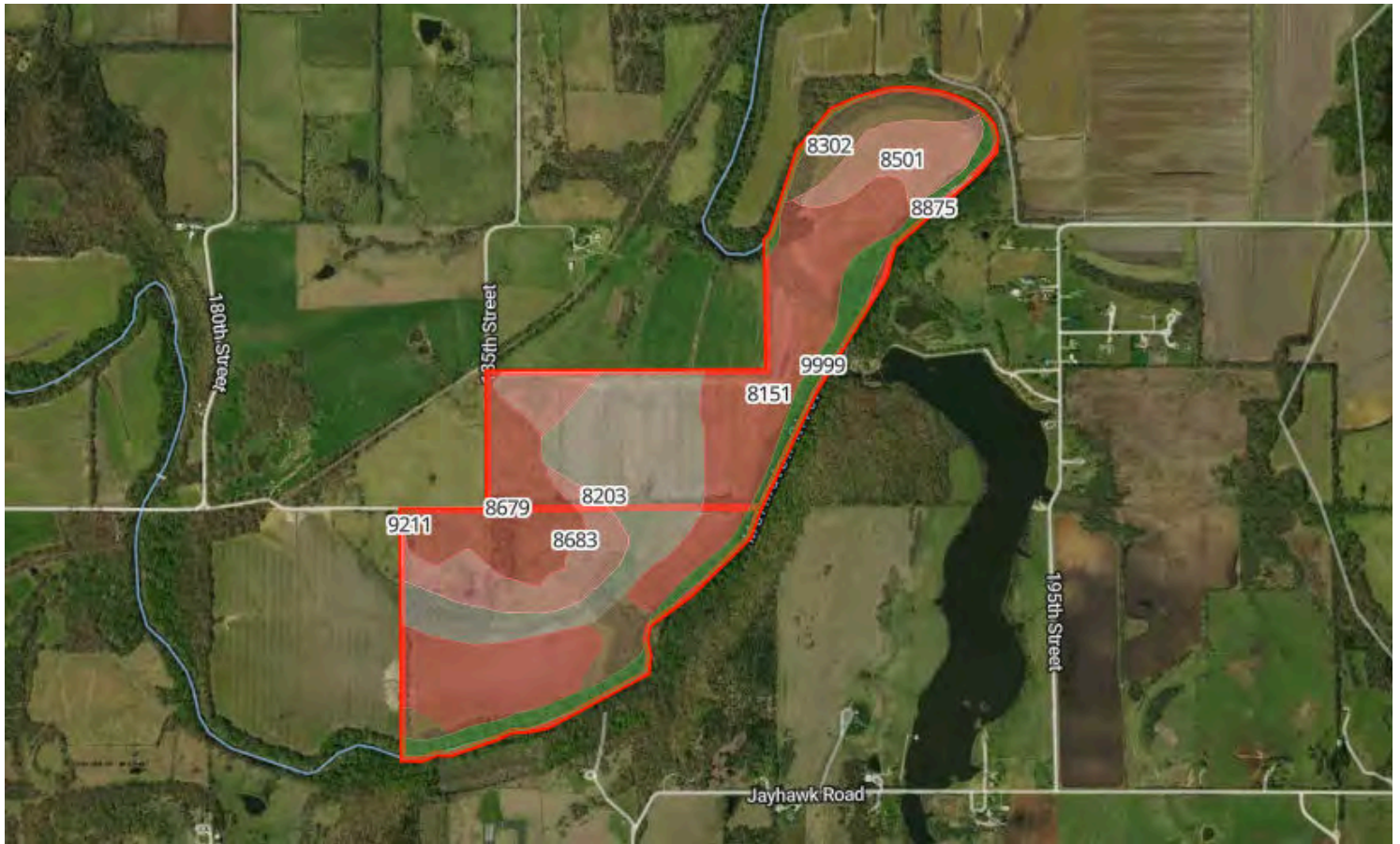
Bourbon County, KS
Township: 026S

Locations
03 T26S R24E

Acres
122.05

Soils

278.8 Acres, 2 Boundaries



	Code	Soil Description	% of Selection	Acres	Non-IRR Class	IRR Class
●	8151	Lanton silty clay loam, 0 to 2 percent slopes, occasionally flooded	31.9%	88.9	2w	--
●	8203	Osage silty clay, 0 to 1 percent slopes, occasionally flooded	21.2%	59	3w	--
●	8679	Dennis silt loam, 1 to 3 percent slopes	11.2%	31.2	2e	--
●	8683	Dennis silt loam, 3 to 7 percent slopes	10.6%	29.6	3e	--
●	9999	Water	9.7%	27.1	--	--

Soils



278.8 Acres, 2 Boundaries

	Code	Soil Description	% of Selection	Acres	Non-IRR Class	IRR Class
●	8302	Verdigris silt loam, 0 to 1 percent slopes, occasionally flooded	8.5%	23.8	2w	--
●	8501	Mason silt loam, 0 to 1 percent slopes, rarely flooded	6.4%	17.9	1	--
●	9211	Bolivar-Hector complex, 5 to 15 percent slopes	0.3%	0.8	6e	--
●	8875	Ringo-Clareson complex, 8 to 15 percent slopes	0.1%	0.2	6e	--

Soils by Boundary

156.8 Acres, Boundary 1 of 2



	Code	Soil Description	% of Selection	Acres	Non-IRR Class	IRR Class
●	8151	Lanton silty clay loam, 0 to 2 percent slopes, occasionally flooded	32.6%	51	2w	--
●	8203	Osage silty clay, 0 to 1 percent slopes, occasionally flooded	23.4%	36.7	3w	--
●	8501	Mason silt loam, 0 to 1 percent slopes, rarely flooded	11.4%	17.9	1	--
●	9999	Water	9.8%	15.4	--	--
●	8302	Verdigris silt loam, 0 to 1 percent slopes, occasionally flooded	8.7%	13.6	2w	--

Soils



156.8 Acres, Boundary 1 of 2

	Code	Soil Description	% of Selection	Acres	Non-IRR Class	IRR Class
●	8679	Dennis silt loam, 1 to 3 percent slopes	7.9%	12.3	2e	--
●	8683	Dennis silt loam, 3 to 7 percent slopes	6.1%	9.6	3e	--
●	8875	Ringo-Clareson complex, 8 to 15 percent slopes	0.1%	0.2	6e	--

Soils by Boundary



122 Acres, Boundary 2 of 2



	Code	Soil Description	% of Selection	Acres	Non-IRR Class	IRR Class
●	8151	Lanton silty clay loam, 0 to 2 percent slopes, occasionally flooded	31.1%	38	2w	--
●	8203	Osage silty clay, 0 to 1 percent slopes, occasionally flooded	18.4%	22.4	3w	--
●	8683	Dennis silt loam, 3 to 7 percent slopes	16.4%	20	3e	--
●	8679	Dennis silt loam, 1 to 3 percent slopes	15.6%	19	2e	--
●	9999	Water	9.6%	11.7	--	--

Soils

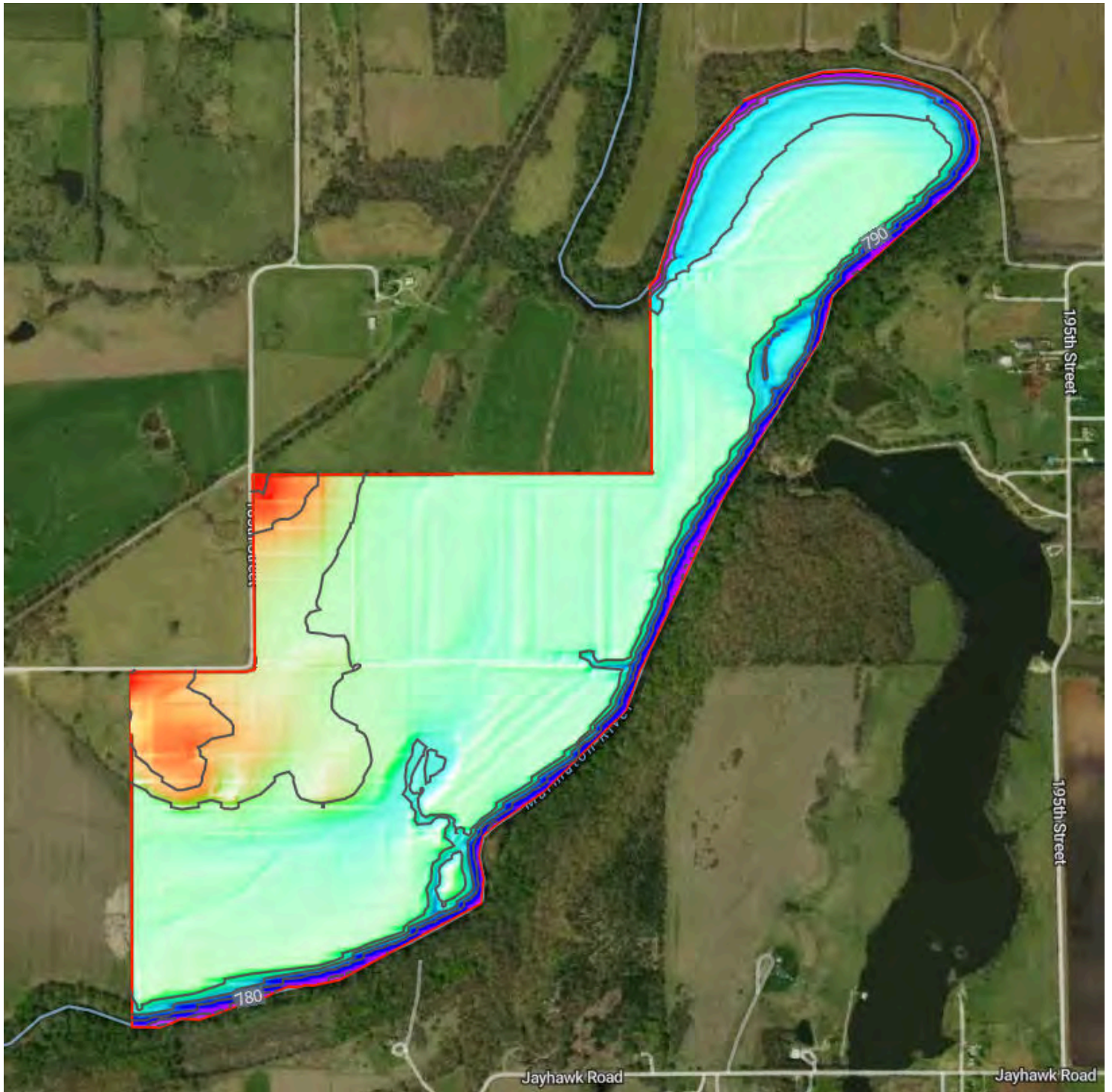


122 Acres, Boundary 2 of 2

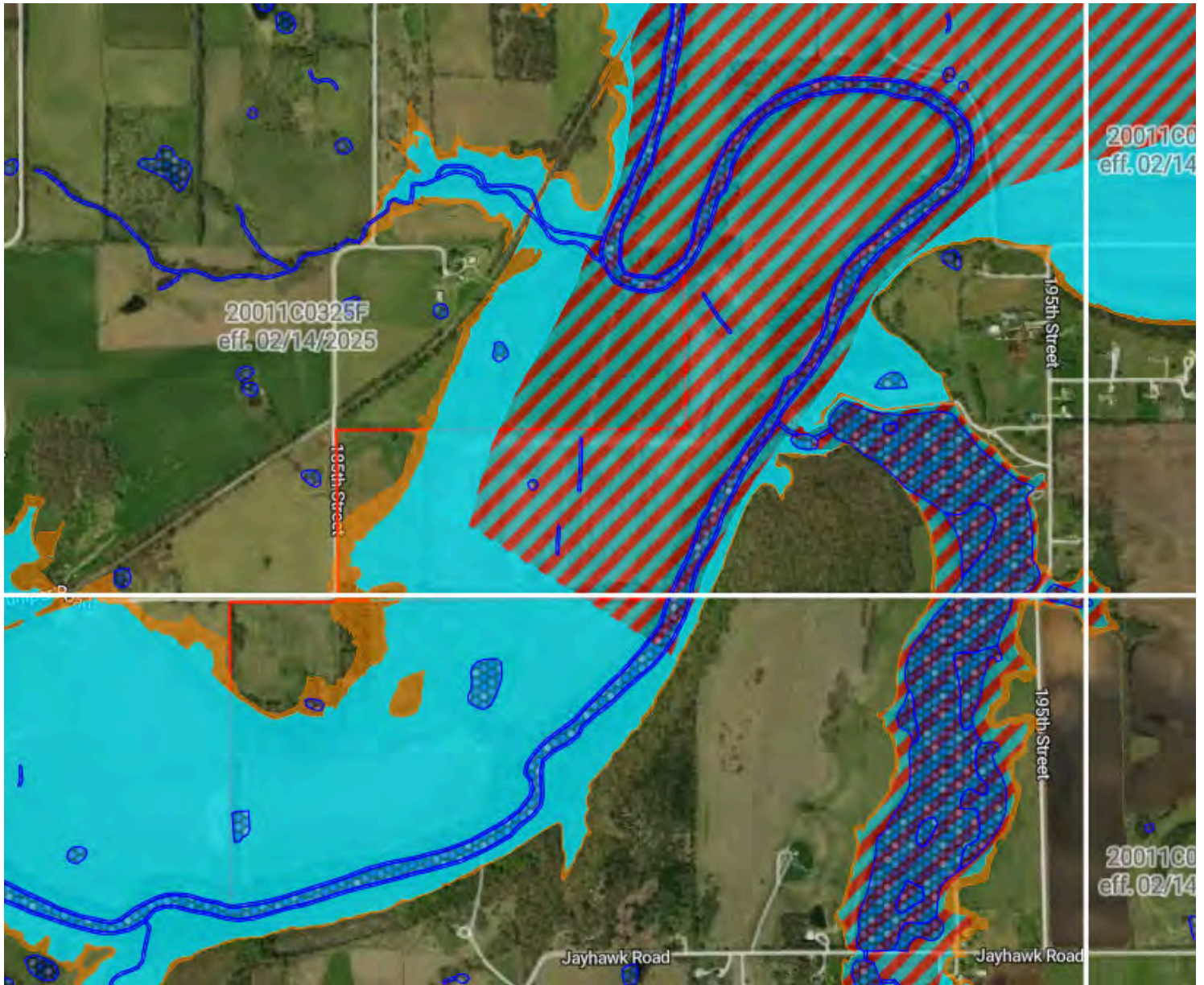
	Code	Soil Description	% of Selection	Acres	Non-IRR Class	IRR Class
●	8302	Verdigris silt loam, 0 to 1 percent slopes, occasionally flooded	8.3%	10.2	2w	--
●	9211	Bolivar-Hector complex, 5 to 15 percent slopes	0.6%	0.8	6e	--

Elevation









278.8 Acres, 2 Boundaries



Source: USGS 3 Meter Dem	Interval: 10 feet	Range: 55.3 feet	Min: 778 feet	Max: 833.3 feet
		Slope: 3.5%	Min: 0%	Max: 48.2%



Flood Zone Hazard

-  0.2% annual flood hazard
-  1% annual flood hazard
-  Future 1% annual flood hazard
-  Increased risk due to levee
-  Reduced risk due to levee
-  Regulatory Floodway
-  Special Floodway
-  Wetlands